



**FITTING INSTRUCTIONS FOR AB0028 ADVENTURE BARS**  
**BMW K1600 GT 2017-**



**THIS KIT CONTAINS THE ITEMS PICTURED AND LABELLED BELOW.**  
**DO NOT PROCEED UNTIL YOU ARE SURE ALL PARTS ARE PRESENT.**

Please note that the way the kit is packed does not necessarily represent the way of mounting to the bike  
Please note that in cases where kits are packed with rubber washers holding the components onto the bolt – *the rubber washers should be thrown away!*

THE PARTS SHOWN MAY BE REPRESENTATIVE ONLY (FOR CLARITY OF INSTRUCTIONS ONLY)

**Digital copies of these instructions are available to download from [www.rg-racing.com](http://www.rg-racing.com)**

**GENERAL TORQUE SETTINGS**

M4 BOLT = 8Nm  
M5 BOLT = 12Nm  
M6 BOLT = 15Nm  
M8 BOLT = 20Nm  
M10 BOLT = 40Nm

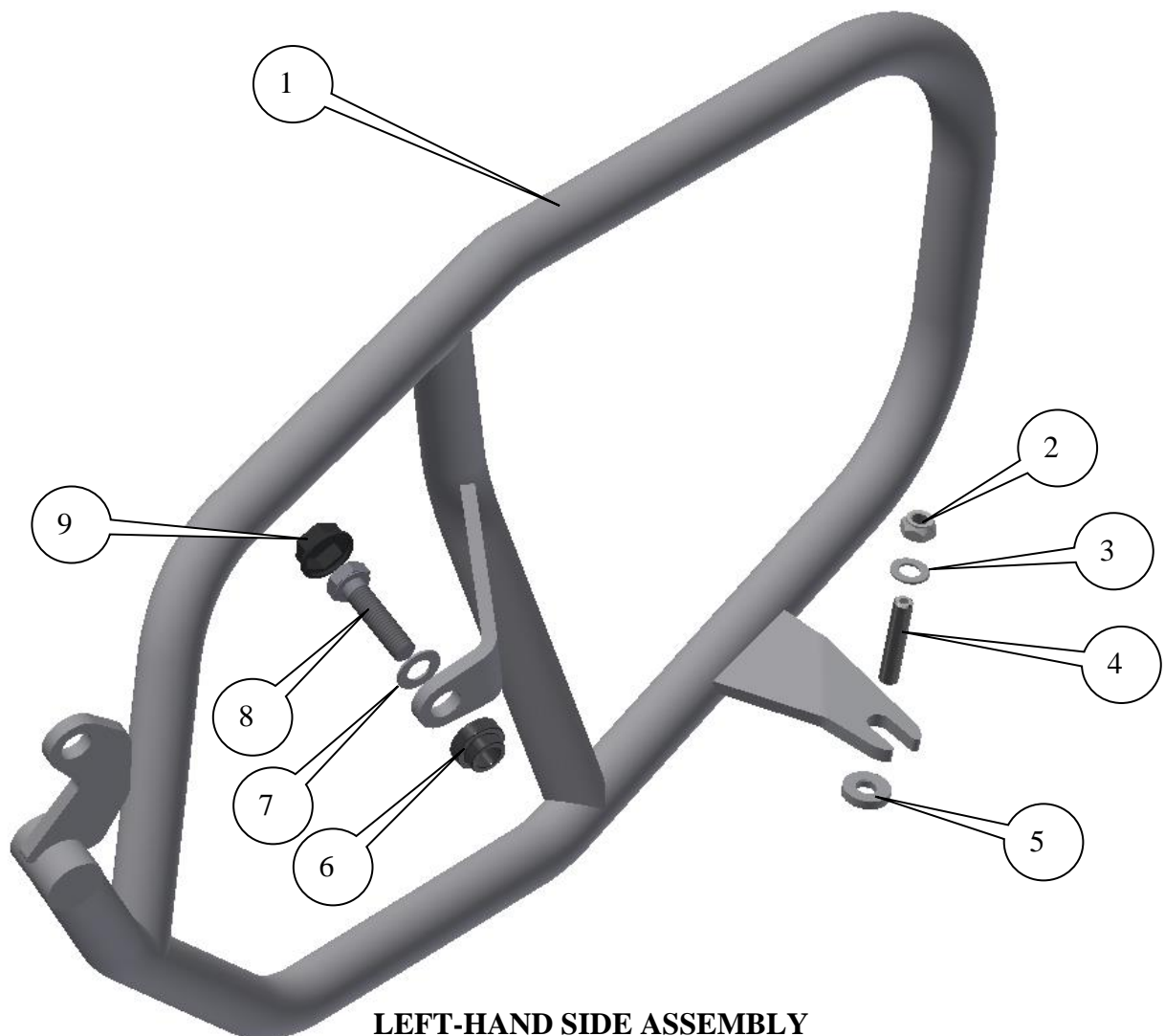
**TOOLS REQUIRED**

- Socket set to include 17mm A/F socket, T45, T50 Torx bits and wrench.
- Set of Allen keys to include 4 & 8mm A/F (or socket bit and wrench).
  - 13mm Spanner.
- Torque wrench (up to 40Nm).



**In This Kit, There Should Be**

- 1x Left Hand Side Adventure Bar (AB0028 LHS WELDED ASSY).
- 1x Right Hand Side Adventure Bar (AB0028 RHS WELDED ASSY).
  - 1x Left Hand Side Mid Mount Spacer (S1159-12mm long).
  - M10x1.5x40mm long hex head bolt (LHS Mid Mount Bolt).
  - 1x Right Hand Side Mid Mount Spacer (S0774-24mm long).
  - M10x1.5x40mm Cap hex head bolt (RHS Rear Mount Bolt).
  - M10x1.5x50mm long hex head bolt (RHS Mid Mount Bolt).
    - 2x Front Mount Spacers (S0985-4mm long).
      - 1x M10 Flat Cap (NC0010-RHS-rear).
      - 2x M10 Washers (L&RHS).
      - 2x M8 Washers (L&RHS front).
      - 2x M8 Nyloc Nuts (L&RHS front).
- 2x M8x1.25x45mm long Set Screws (front mounts L&RHS).
  - 2x M10 Nut Caps (NC0001).

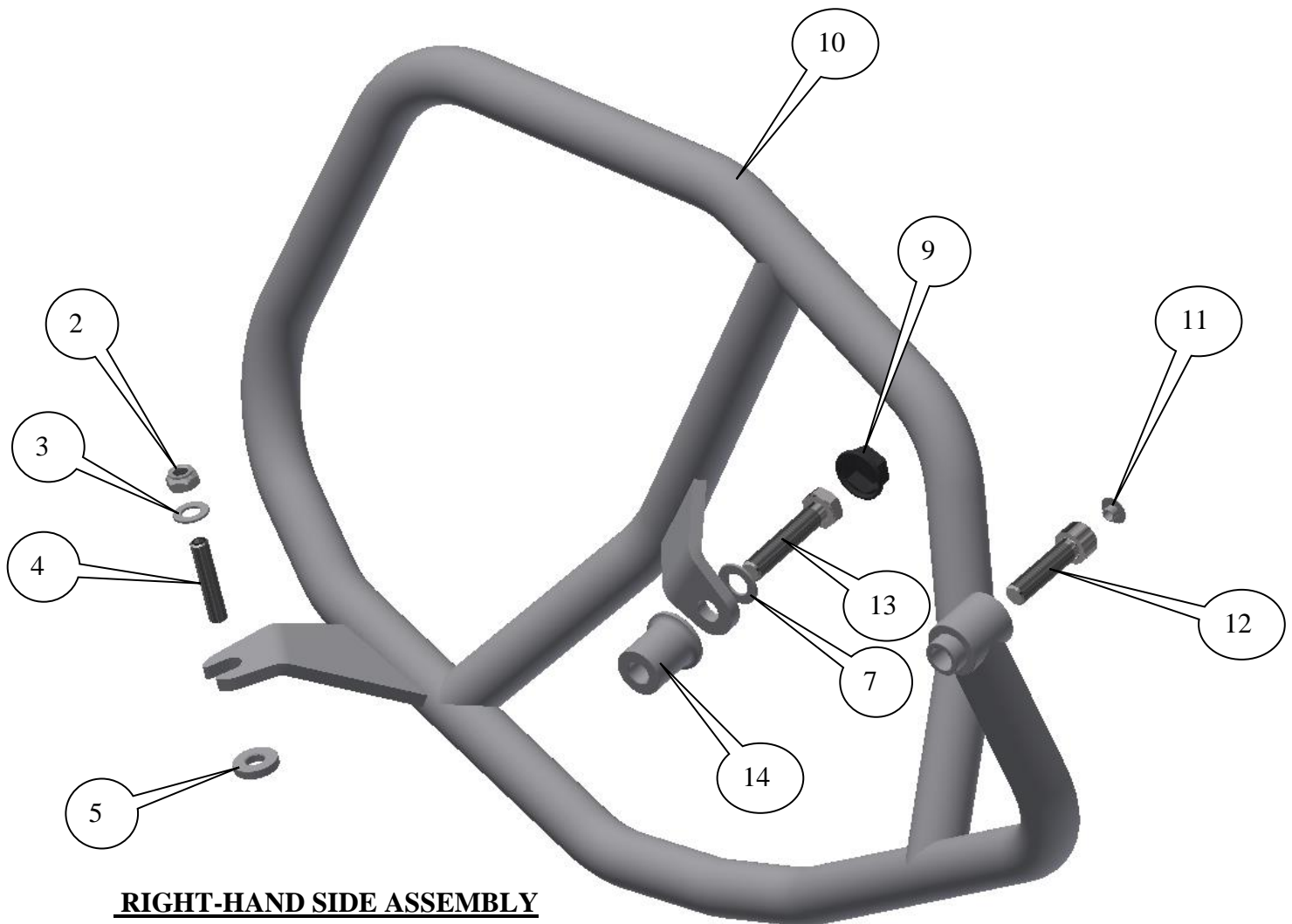


**LEFT-HAND SIDE ASSEMBLY**

R&G

Unit 1, Shelley's Lane, East Worldham, Alton, Hampshire, GU34 3AQ

Tel: +44 (0)1420 89007 Fax: +44 (0)1420 87301 [www.rg-racing.com](http://www.rg-racing.com) Email: [info@rg-racing.com](mailto:info@rg-racing.com)



### **RIGHT-HAND SIDE ASSEMBLY**

#### **LEGEND**

ITEM 1 = ADVENTURE BAR LEFT-HAND SIDE (AB0028 LHS ASSY) (x1).

ITEM 2 = M8 NYLOC NUTS (x2).

ITEM 3 = M8 WASHERS (x2).

ITEM 4 = M8x1.25x45mm LONG SET SCREWS (FRONT MOUNTS L&RHS) (x2).

ITEM 5 = S0985 FRONT MOUNT SPACERS (4mm LONG).

ITEM 6 = S1159 LHS MID MOUNT SPACER (12mm LONG).

ITEM 7 = M10 WASHERS (x2).

ITEM 8 = M10x1.5x40mm HEX HEAD BOLT (LHS MID MOUNT) (x1).

ITEM 9 = M10 NUT CAPS (NC0001) (x2).

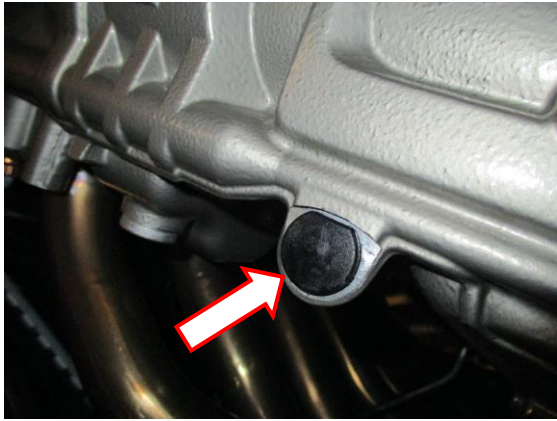
ITEM 10 = ADVENTURE BAR RIGHT-HAND SIDE (AB0028 RHS ASSY) (x1).

ITEM 11 = M10 FLAT CAPS (NC0010) (x1).

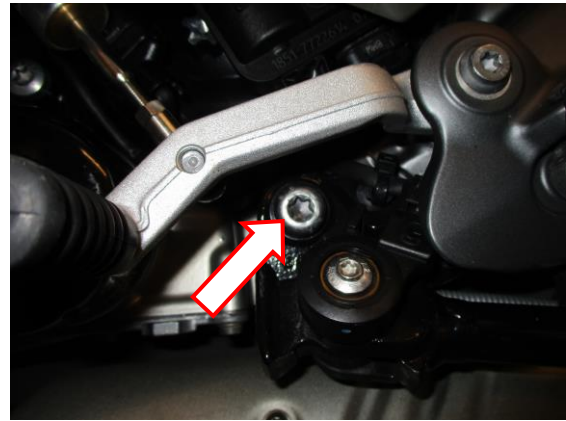
ITEM 12 = M10x1.5x40mm CAP HEAD BOLT (RHS REAR MOUNTS) (x1).

ITEM 13 = M10x1.5x50mm HEX HEAD BOLT (RHS MID MOUNT) (x1).

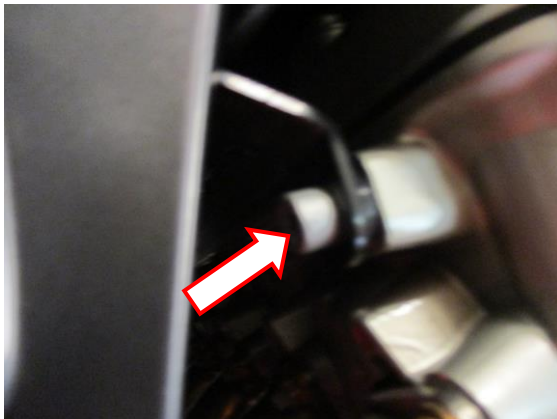
ITEM 14 = S0744 LHS MID MOUNT SPACER (24mm LONG).



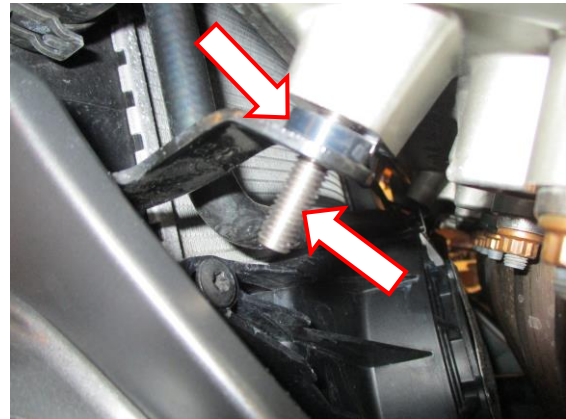
PICTURE 1



PICTURE 2



PICTURE 3



PICTURE 4



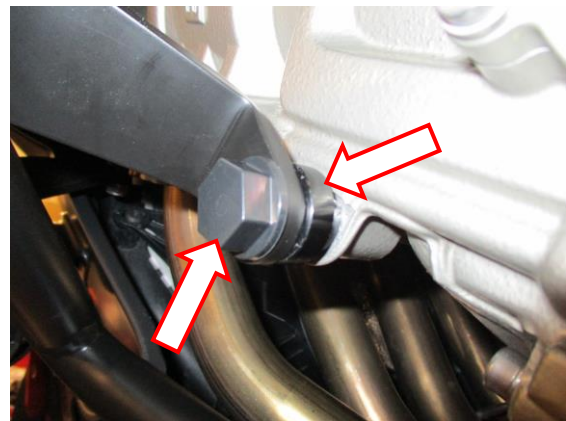
PICTURE 5



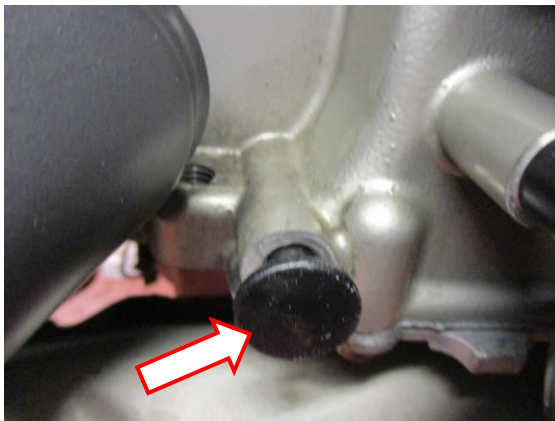
PICTURE 6



PICTURE 7



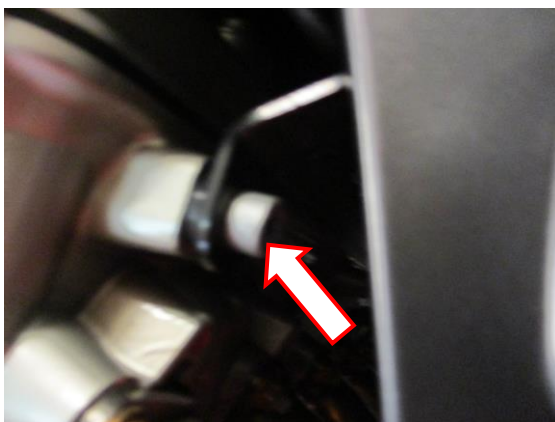
PICTURE 8



PICTURE 9



PICTURE 10



PICTURE 11



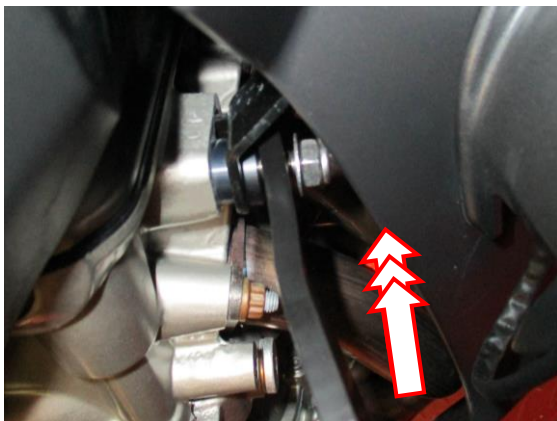
PICTURE 12



PICTURE 13



PICTURE 14



PICTURE 15



PICTURE 16



PICTURE 17



PICTURE 18



## **FITTING INSTRUCTIONS**

### **Near side (left side as you sit on bike)**

- Remove the plastic plug arrowed in picture 1.
- Remove the bolt arrowed in picture 2.
- Remove the bolt arrowed in picture 3 (this is the spot light bracket bolt, it has spacer behind it which must be reused)
- Replace the bolt just removed with one of the long set screws (item 4) as shown in picture 4 (it has an Allen key slot in one end which should be used for tightening) please ensure the original spacer remains in place.
- Place one of the thin spacers (item 5), one of the M8 washers (item 3) and one of the Nyloc nuts (item 2) onto the set screw as shown in picture 5.
- Offer the left-hand side assembly (item 1) into position as shown in the top picture and secure using the original bolt as shown in picture 6, do not fully tighten at this stage.
- Position the slotted bracket over the front set screw as shown in picture 7.
- Place one of the M10 washers (item 7) onto the shorter M10 hex head bolt (item 8), then place this assembly through the hole in the mid mounting plate as shown in picture 8.
- Place the shorter stepped spacer (item 6) over the exposed thread and secure the bolt as shown in picture 8.
- Tighten all the nuts and bolts ensuring the adventure bars remain clear of all fairing panels.

### **Off side (right side as you sit on bike)**

- Remove the plastic plug arrowed in picture 9.
- Remove the bolt arrowed in picture 10.
- Remove the bolt arrowed in picture 11 (this is the spot light bracket bolt, it has spacer behind it which must be reused)
- Replace the bolt just removed with one of the long set screws (item 4) (it has an Allen key slot in one end which should be used for tightening) please ensure the original spacer remains in place.
- Place one of the thin spacers (item 5), one of the M8 washers (item 3) and one of the Nyloc nuts (item 2) onto the set screw as shown in picture 12.
- Offer the right-hand side assembly (item 10) into position as shown in the top picture and secure using the M10 cap head bolt (item 12) as shown in picture 13, do not fully tighten at this stage.
- Position the slotted bracket over the front set screw as shown in picture 15.
- Place one of the M10 washers (item 7) onto the longer M10 hex head bolt (item 13), then place this assembly through the hole in the mid mounting plate as shown in picture 14.
- Place the longer stepped spacer (item 14) over the exposed thread and secure the bolt as shown in picture 14.
- Tighten all the nuts and bolts ensuring the adventure bars remain clear of all fairing panels.
- Fit the two bolt covers (item 9) over the hex head bolts as shown in pictures 16 and 17.
- Fit the flat bolt cover (item 11) into the cap head bolt as shown in picture 18.

ISSUE 1 08/11/2018 (NSY)



#### **CONSUMER NOTICE**

The catalogue description and any exhibition of samples are only broad indications of the Products and R&G may make design changes which do not diminish their performance or visual appeal and supplying them in such state shall conform to the order. The Buyer acknowledges no representation or warranty (other than as to title) has been given or will apply to the Products other than those in R&G's order or confirmation and the Buyer confirms it has chosen the Products as being of merchantable quality and suitable for its particular purposes. Where R&G fits the Products or undertakes other services it shall exercise reasonable skill and care and rectify any fault free of charge unless the workmanship has been disturbed. The Buyer is responsible for ensuring that the warranty on the motorcycle is not affected by the fitting of the Products. On return of any defective Products R&G shall at its option either supply a replacement or refund the purchase money but shall not be liable if the Products have been modified or used or maintained otherwise than in accordance with R&G's or manufacturer's instructions and good engineering practice or if the defect arises from accident or neglect. Other than identified above and subject to R&G not limiting its liability for causing death and personal injury, it shall not be liable for indirect or consequential loss and otherwise its liability shall be limited to the amounts paid by the Buyer for the Products or the fitting or service concerned. These terms do not affect the Buyer's statutory rights.

#### **R&G RETURNS POLICY (NON-FAULTY GOODS)**

Returns must be pre-authorized (if not pre-authorized the return will be rejected). Goods may only be returned direct to us if they were purchased direct from us (customer must prove if necessary). Otherwise to be returned to original vendor. Goods must be in re-sellable condition, in the opinion of R&G. All returns are subject to a 25% restocking and handling fee (25% of the gross value exc. P&P – at the prevailing price at time of purchase). The customer must pay any and all carriage charges. No returns of discontinued products, unless within 14 days of purchase. This policy does not affect your statutory rights and does not refer to faulty goods.

R&G

Unit 1, Shelley's Lane, East Worldham, Alton, Hampshire, GU34 3AQ

Tel: +44 (0)1420 89007 Fax: +44 (0)1420 87301 [www.rg-racing.com](http://www.rg-racing.com) Email: [info@rg-racing.com](mailto:info@rg-racing.com)