



FITTING INSTRUCTIONS FOR CP0552 RACE CRASH PROTECTORS



THIS KIT CONTAINS THE ITEMS PICTURED AND LABELLED OVER PAGE.

SOME PARTS MAY BE SHOWN FOR CLARITY OF INSTRUCTIONS ONLY.

DO NOT PROCEED UNTIL YOU ARE SURE ALL PARTS ARE PRESENT.

PLEASE READ ALL INSTRUCTIONS BEFORE PROCEEDING.

**IF IN ANY DOUBT WHEN FITTING OUR PRODUCTS, CONSULT ONE OF OUR DEALERS
OR HAVE FITTED BY A QUALIFIED TECHNICIAN.**

PLEASE NOTE THAT THE WAY THE KIT IS PACKED DOES NOT NECESSARILY REPRESENT THE WAY OF
MOUNTING TO THE BIKE.

IN THE EVENT OF RUBBER WASHERS BEING USED TO HOLD COMPONENTS ONTO BOLTS,
THESE RUBBER WASHERS CAN BE THROWN AWAY.

DIGITAL COPIES OF THESE INSTRUCTIONS ARE AVAILABLE FROM:

WWW.RG-RACING.COM

R&G

Unit 1, Shelley's Lane, East Worldham, Alton, Hampshire, GU34 3AQ
Tel: +44 (0)1420 89007 Fax: +44 (0)1420 87301 www.rg-racing.com Email: info@rg-racing.com

**GENERAL TORQUE SETTINGS**

M4 BOLT = 8Nm
 M5 BOLT = 12Nm
 M6 BOLT = 15Nm
 M8 BOLT = 20Nm
 M10 BOLT = 40Nm

TOOLS REQUIRED

- T50 Torx Key/Socket
- Torque Wrench
- Scissor Jack
- 17mm Socket and Ratchet

LEGEND

ITEM NO.	DESCRIPTION	QTY
ITEM 1	B0472 LHS - M10 Crash Protector	1
ITEM 2	B0063 RHS - M10 Crash Protector	1
ITEM 3	M10x1.50x120 - HEX ENGINE BOLT - LHS	1
ITEM 4	M10x1.50x110 HEX - HEX ENGINE BOLT - RHS	1
ITEM 5	S1133 54mm SPACER LHS	1
ITEM 6	S0499 RHS - 35MM SPACER RHS	1
ITEM 7	S0293 RHS - 3MM SPACER RHS	1
ITEM 8	LW0001 - LOCKING WASHER	2
ITEM 9	M10x20 O/D - WASHER	2
ITEM 10	BC0002 - CRASH PROTECTOR CAP	2

AERO STYLE CRASH-PROTECTOR ORIENTATION

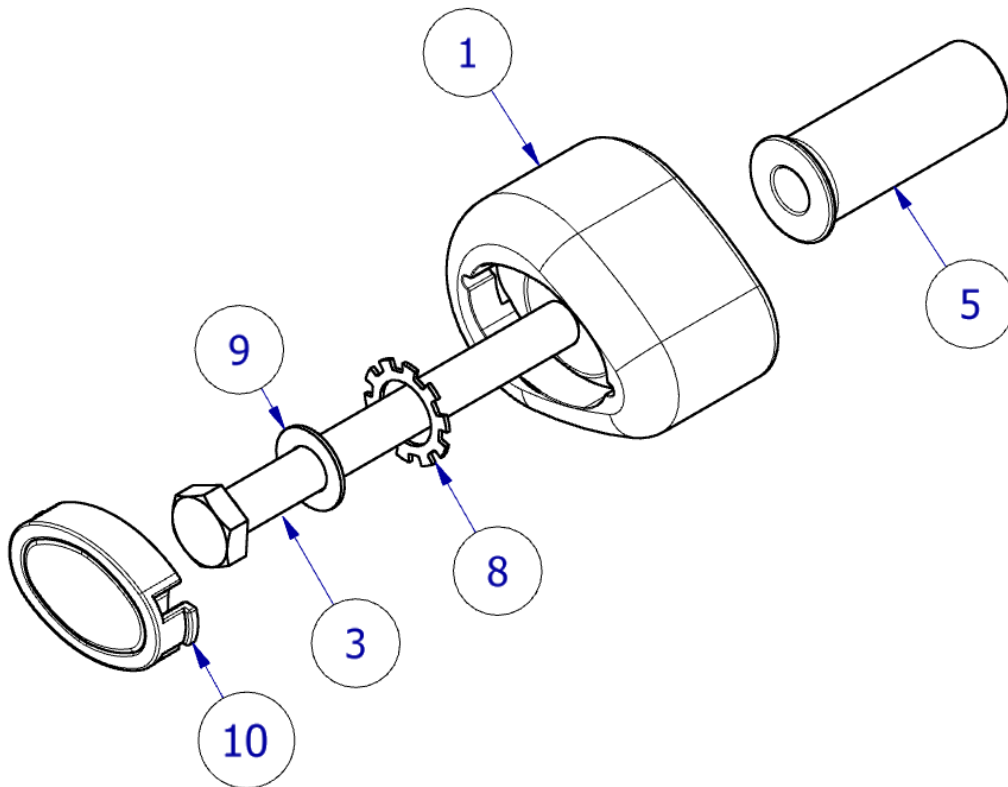
R&G

Unit 1, Shelley's Lane, East Worldham, Alton, Hampshire, GU34 3AQ

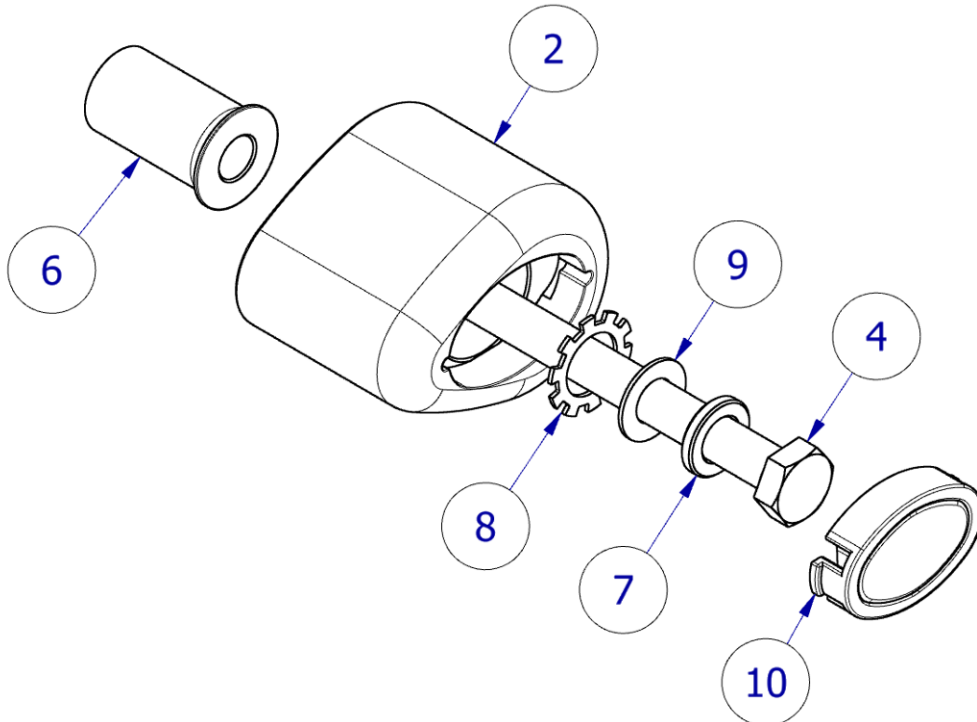
Tel: +44 (0)1420 89007 Fax: +44 (0)1420 87301 www.rg-racing.com Email: info@rg-racing.com



LHS ASSEMBLY



RHS ASSEMBLY



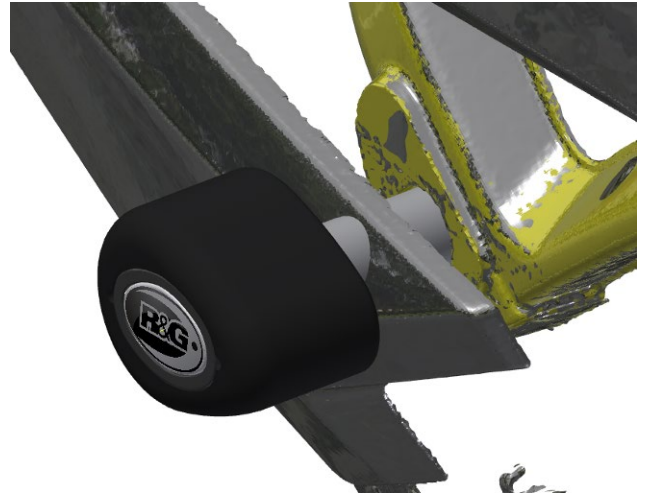
R&G



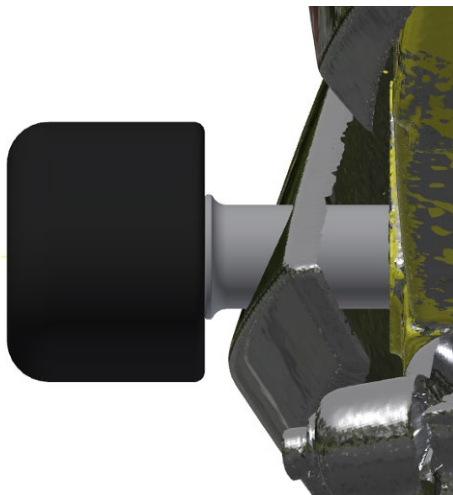
FITTING IMAGES



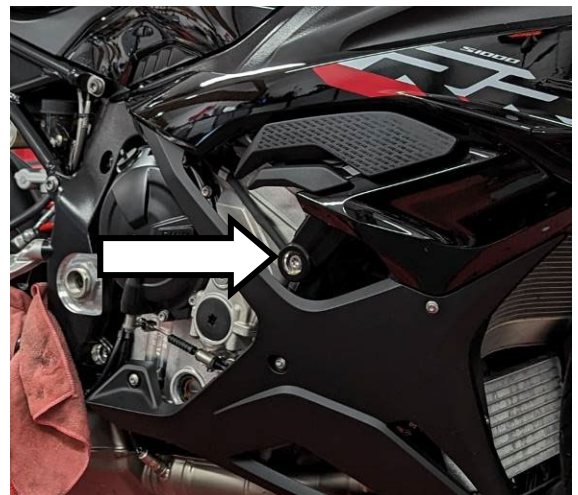
PICTURE 1



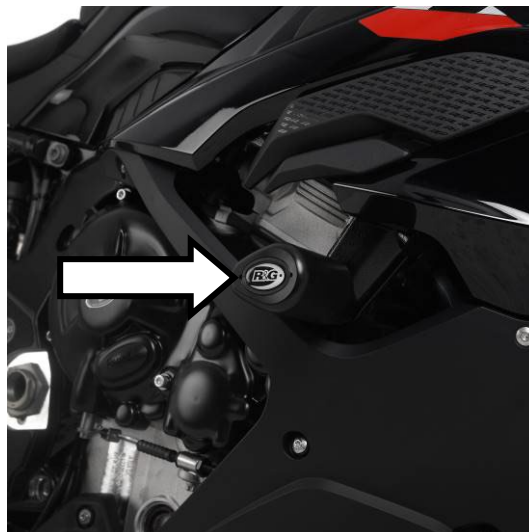
PICTURE 2



PICTURE 3



PICTURE 4



PICTURE 5



FITTING INSTRUCTIONS

NOTE: THIS KIT REQUIRED MODIFICATION TO THE OEM FAIRING TO PROVIDE THE BEST PROTECTIVE SOLUTION FOR RACE & TRACK USE. RACE FAIRINGS MAY VARY. NON-DRILL KITS ARE AVAILABLE FROM RG-RACING.COM

Before removing engine bolts, ensure the bike is upright and supported by a suitable engine stand or jack placed under the sump of the motorbike to support the partial weight of the engine, this will prevent the engine from moving during fitting. DO NOT REMOVE MORE THAN ONE ENGINE BOLT AT ANY TIME.

Left-Hand Side

- Begin by removing the LHS fairing piece according to the manufacturers service manual.
- Remove the LHS engine bolt shown in **picture 1** using a T50 Torx tool.
- For OEM fairings, insert a pen or similar marking tool into the hole and refit the fairing to the bike ensuring the marking tool touches the fairing – this will mark the area to be removed in the next step.
- You may choose to either drill a circular hole or carefully remove the obstructing section using a Dremel tool. **Pictures 2 & 3** represent where the hole should be located.
- Re-fit the fairing ensuring the engine bolt mount is now visible with a minimum 20mm hole to fit the spacer.
- Assemble the LHS crash protector assembly according to the assembly diagram on page 3.
- Fix the crash protector into the exposed engine mount and torque to the recommended specification. **PLEASE NOTE, THE CRASH PROTECTOR MUST BE POSITIONED AS IN THE DIAGRAM ON PAGE 2, WITH THE LARGER END TOWARDS THE FRONT OF THE BIKE.**

Right-Hand Side

- Moving to the RHS of the motorcycle, remove the engine bolt arrowed in **picture 4** using a T50 Torx tool.
- Assemble the RHS crash protector according to the assembly diagram on page 3.
- Fix the crash protector into the frame and engine and tighten to the recommended torque. **PLEASE NOTE, THE CRASH PROTECTOR MUST BE POSITIONED AS IN THE DIAGRAM ON PAGE 2, WITH THE LARGER END TOWARDS THE FRONT OF THE BIKE.**

Both-Sides

- Finally, fit the bobbin caps (item 4) to both crash protectors, as shown in **picture 5**.
- Before riding, check both sides are secure, and the crash protectors cannot rotate.
- Check tightness of each side regularly.

See more R&G products for your Motorcycle in the links below:

[R&G Racing | All Products for BMW - S1000RR \(2023\) \(rg-racing.com\)](https://www.rg-racing.com)

ISSUE 1 – 20/03/2023 - DM

R&G

Unit 1, Shelley's Lane, East Worldham, Alton, Hampshire, GU34 3AQ
Tel: +44 (0)1420 89007 Fax: +44 (0)1420 87301 www.rg-racing.com Email: info@rg-racing.com