



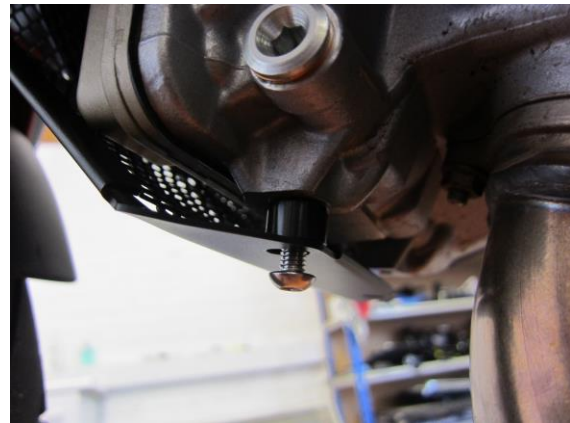
**Fitting Instructions for CHG0002BK Cylinder Head Guard**  
**DUCATI MULTISTRADA 1200 '10-'14**



**In This Kit There Should Be**  
**1x Cylinder Head Guard (CHG0002BK)**  
**2x Spacers (9mm long)**  
**2x M6 x 20mm Long Button Head Bolts**



Picture 1



Picture 2

**TOOLS REQUIRED**

- Socket set to include 4mm A/F socket & wrench.

R&G Racing  
Unit 1, Shelley's Lane, East Worldham, Alton, Hampshire, GU34 3AQ  
Tel: +44 (0)1420 89007 Fax: +44 (0)1420 87301 [www.rg-racing.com](http://www.rg-racing.com) Email: [info@rg-racing.com](mailto:info@rg-racing.com)



## **FITTING INSTRUCTIONS**

- Take the R&G Cylinder Head Guard and offer it up to the bike, taking care to locate the mount on the top right of the guard over the lower mount of the radiator, as shown in picture 1. *The guards mount should sit between the flat plate of the bracket and the rubber mount.*
- Take the two M6 x 20mm long button head bolts and spacers supplied in the kit and locate through the two lower mounting holes, as shown in pictures 2, before tightening the bolts into the underside of the front cylinder head.
- Ensure the cylinder head guard is correctly fitted and all bolts are tightened evenly.

ISSUE 1 15/05/2014 (AR)

**Digital copies of these instructions are available to download from [www.rg-racing.com](http://www.rg-racing.com)**

### **CONSUMER NOTICE**

The catalogue description and any exhibition of samples are only broad indications of the Products and R&G may make design changes which do not diminish their performance or visual appeal and supplying them in such state shall conform to the order. The Buyer acknowledges no representation or warranty (other than as to title) has been given or will apply to the Products other than those in R&G's order or confirmation and the Buyer confirms it has chosen the Products as being of merchantable quality and suitable for its particular purposes. Where R&G fits the Products or undertakes other services it shall exercise reasonable skill and care and rectify any fault free of charge unless the workmanship has been disturbed. The Buyer is responsible for ensuring that the warranty on the motorcycle is not affected by the fitting of the Products. On return of any defective Products R&G shall at its option either supply a replacement or refund the purchase money but shall not be liable if the Products have been modified or used or maintained otherwise than in accordance with R&G's or manufacturer's instructions and good engineering practice or if the defect arises from accident or neglect. Other than identified above and subject to R&G not limiting its liability for causing death and personal injury, it shall not be liable for indirect or consequential loss and otherwise its liability shall be limited to the amounts paid by the Buyer for the Products or the fitting or service concerned. These terms do not affect the Buyer's statutory rights.

### **R&G RACING RETURNS POLICY (NON-FAULTY GOODS)**

Returns must be pre-authorized (if not pre-authorized the return will be rejected). Goods may only be returned direct to us if they were purchased direct from us (customer must prove if necessary). Otherwise to be returned to original vendor. Goods must be in re-sellable condition, in the opinion of R&G Racing. All returns are subject to a 25% restocking and handling fee (25% of the gross value exc. P&P – at the prevailing price at time of purchase). The customer must pay any and all carriage charges. No returns of discontinued products, unless within 14 days of purchase. This policy does not affect your statutory rights and does not refer to faulty goods.