



FITTING INSTRUCTIONS FOR TG0021
SHARK FIN TOE GUARD



This kit contains the items pictured and labelled over the page.

Some parts may be shown for clarity of instructions only.

Do not proceed until you are sure all parts are present.

Please read all instructions before proceeding.

**IF IN ANY DOUBT WHEN FITTING OUR PRODUCTS, CONSULT ONE OF OUR DEALERS
OR HAVE FITTED BY A QUALIFIED TECHNICIAN.**

Please note that the way the kit is packed does not necessarily represent the way of mounting to the bike.

In the event of rubber washers being used to hold components onto bolts, these rubber washers can be thrown away.

DIGITAL COPIES OF THESE INSTRUCTIONS ARE AVAILABLE FROM

[WWW.RG-RACING.COM](http://www.rg-racing.com)

R&G

Unit 1, Shelley's Lane, East Worldham, Alton, Hampshire, GU34 3AQ

Tel: +44 (0)1420 89007 Fax: +44 (0)1420 87301 www.rg-racing.com Email: info@rg-racing.com

**TOOLS REQUIRED**

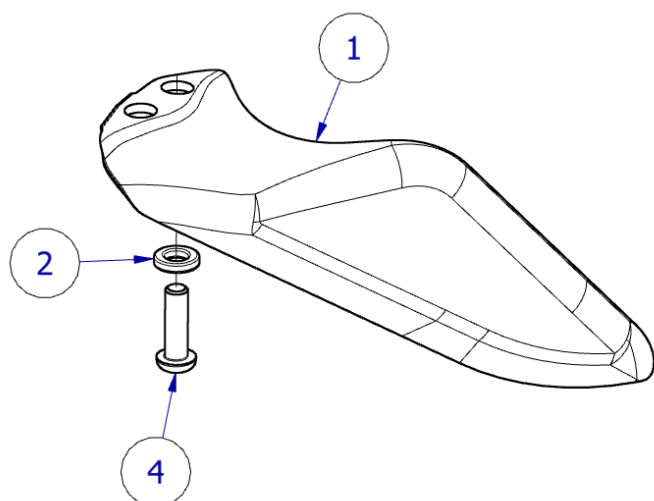
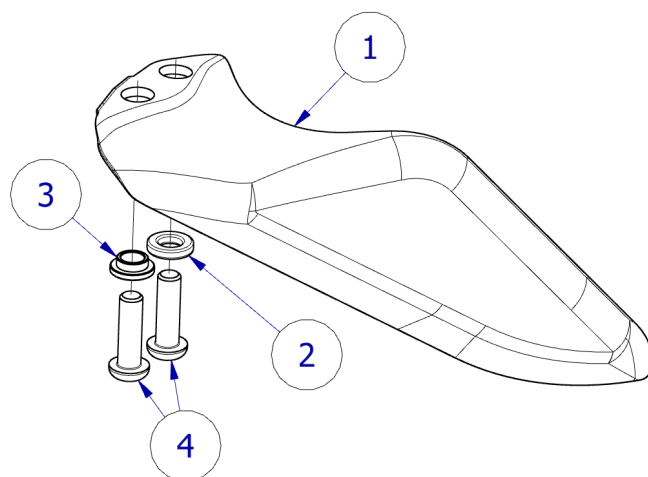
- 4mm ALLEN KEY
- M6 x 1.00 TAP + TAP WRENCH

GENERAL TORQUE SETTINGS

M4 BOLT = 8Nm
 M5 BOLT = 12Nm
 M6 BOLT = 15Nm
 M8 BOLT = 20Nm
 M10 BOLT = 40Nm
 M12 BOLT = 40Nm

LEGEND

ITEM No.	DESCRIPTION	QTY
ITEM 1	CAR0034 (CARBON SHARK FIN)	1
ITEM 2	S0430 (SPACER FOR ROAD FITMENT)	1
ITEM 3	S1436 (SPACER FOR RACE/TRACK FITMENT)	1
ITEM 4	M6x1.00x20mm BUTTON HEAD BOLT	2

ASSEMBLY DIAGRAM 1**ASSEMBLY DIAGRAM 2**

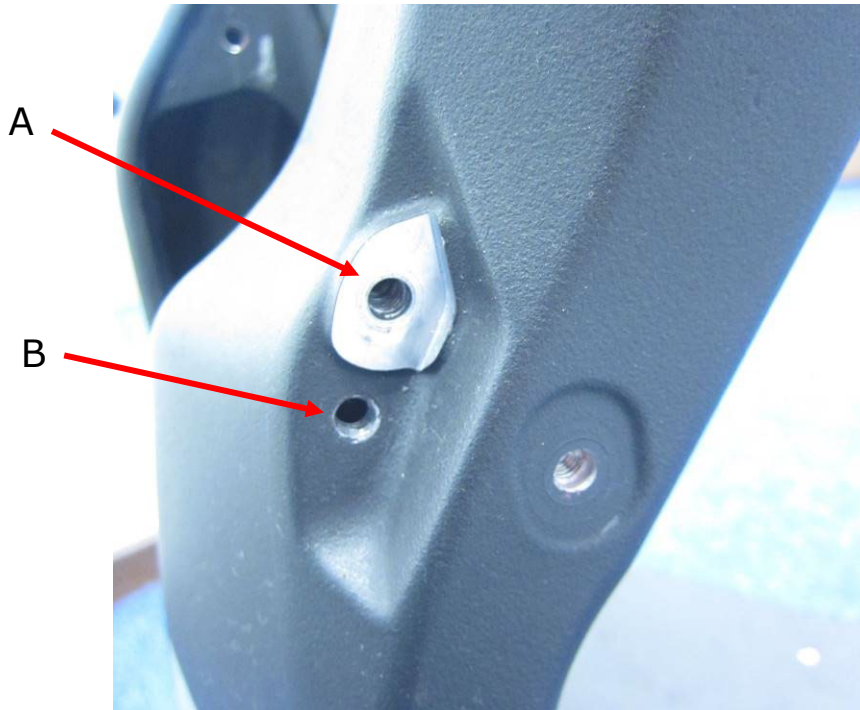
R&G

Unit 1, Shelley's Lane, East Worldham, Alton, Hampshire, GU34 3AQ

Tel: +44 (0)1420 89007 Fax: +44 (0)1420 87301 www.rg-racing.com Email: info@rg-racing.com



FITTING PICTURE



FITTING INSTRUCTIONS

THE INSTRUCTIONS BELOW DETAIL TWO SEPARATE FITTING OPTIONS. CHOOSE WHICH IS MOST SUITABLE FOR YOUR BIKE.

If fitting for ROAD use:

- Remove the OEM plastic shark fin toe guard.
- Assemble the shark fin as shown in **ASSEMBLY DIAGRAM 1**.
- Secure the carbon shark fin assembly to the bike in the same way in which the OEM shark fin is installed using hole **A** labelled as shown in **FITTING PICTURE**, ensuring you use a thread locking compound.

If fitting RACE/TRACK use:

- Remove the OEM plastic shark fin toe guard.
- Run an M6x1.00 tap with a tap wrench through hole **B** labelled as shown in **FITTING PICTURE**.
- Assemble the shark fin as shown in **ASSEMBLY DIAGRAM 2**.
- Secure the carbon shark fin assembly to the bike in the same way in which the OEM shark fin is installed using holes **A** and **B** labelled as shown in **FITTING PICTURE**, ensuring you use a thread locking compound.

R&G

Unit 1, Shelley's Lane, East Worldham, Alton, Hampshire, GU34 3AQ

Tel: +44 (0)1420 89007 Fax: +44 (0)1420 87301 www.rg-racing.com Email: info@rg-racing.com