



LP0196

**FITTING INSTRUCTIONS FOR LP0196BK LICENCE PLATE BRACKET**  
**HUSQVARNA 701 ENDURO/SUPERMOTO 2016-**

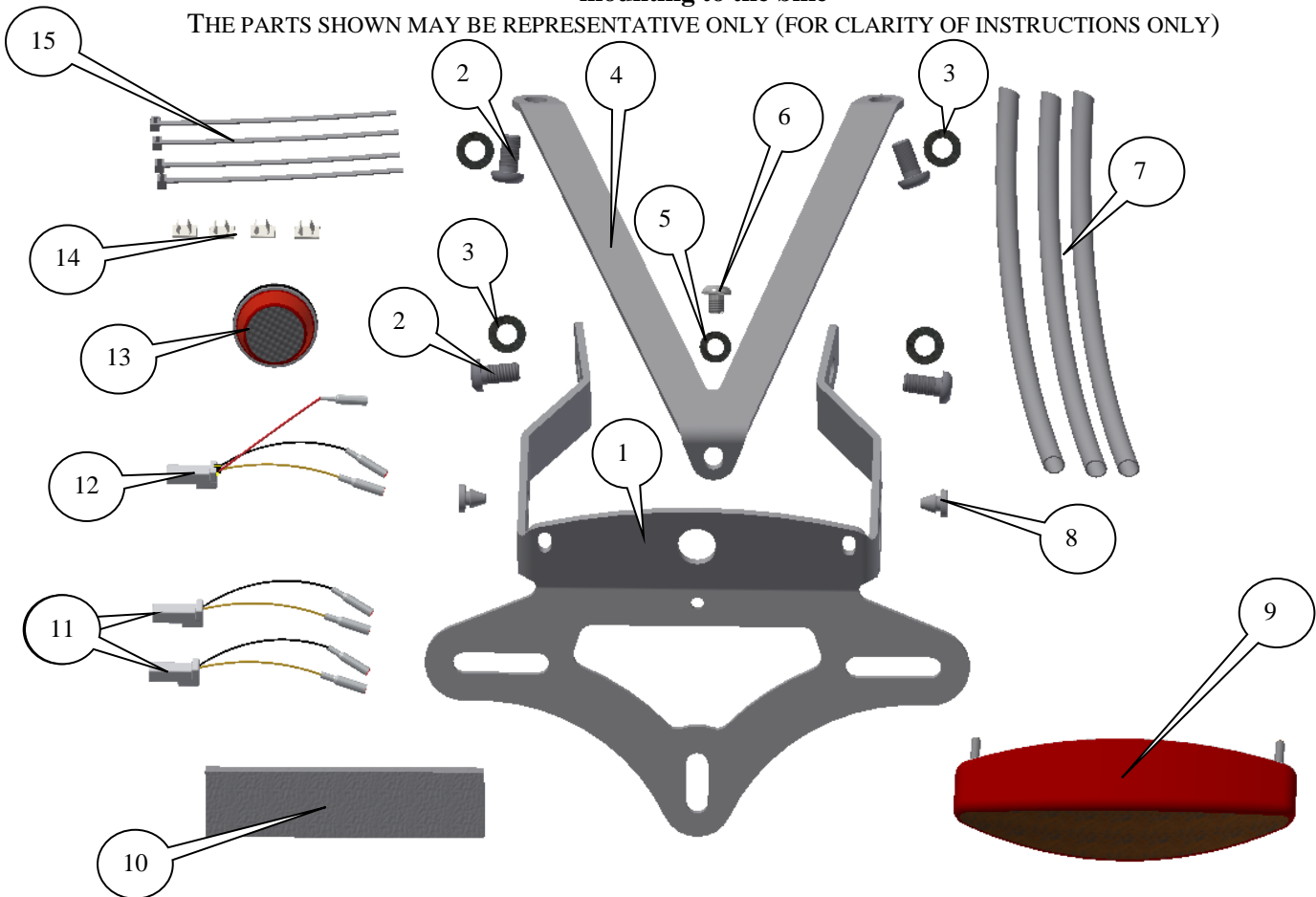
Page | 1



**THIS KIT CONTAINS THE ITEMS PICTURED AND LABELLED BELOW.**  
**DO NOT PROCEED UNTIL YOU ARE SURE ALL PARTS ARE PRESENT.**

Please note that the way the kit is packed does not necessarily represent the way of mounting to the bike

THE PARTS SHOWN MAY BE REPRESENTATIVE ONLY (FOR CLARITY OF INSTRUCTIONS ONLY)



R&G Racing

Unit 1, Shelley's Lane, East Worldham, Alton, Hampshire, GU34 3AQ

Tel: +44 (0)1420 89007 Fax: +44 (0)1420 87301 [www.rg-racing.com](http://www.rg-racing.com) Email: [info@rg-racing.com](mailto:info@rg-racing.com)



LP0196

Page | 2

### **LEGEND**

- ITEM 1 = MAIN LICENCE PLATE BRACKET (TB0196 PART 1) (x1).
- ITEM 2 = M6 x 12mm LONG BUTTON HEAD BOLT (x4).
- ITEM 3 = M6 WASHERS (x4).
- ITEM 4 = LICENCE PLATE SUPPORT BRACKET (TB0196 PART 2) (x1).
- ITEM 5 = M5 WASHERS (x1).
- ITEM 6 = M5 x 6mm LONG BUTTON HEAD BOLT (x1).
- ITEM 7 = 150mm LENGTH OF HEAT SHRINK (x3).
- ITEM 8 = RB50-20-00FG RUBBER GROMMETS (x2)
- ITEM 9 = LA0005 REAR LIGHT ASSEMBLY (RED) (x1).
- ITEM 10 = 150mm LENGTH OF BLACK SELF ADHESIVE FOAM (x1).
- ITEM 11 = INDICATOR CONNECTORS (CON0014) (x2).
- ITEM 12 = REAR LIGHT CONNECTORS (CON0043) (x1).
- ITEM 13 = REFLECTOR (REFL 1) (x1).
- ITEM 14 = SELF ADHESIVE CABLE CLIPS (x4).
- ITEM 15 = SMALL CABLE TIES (x2).

Please note that in cases where kits are packed with rubber washers holding the components onto the bolt – *the rubber washers should be thrown away!*

### **TOOLS REQUIRED**

- Set of Metric Allen keys to include 3 and 4mm A/F.
  - T30 Torx bit or key.
  - 13mm Spanner.
- Small amount of super glue.

**Digital copies of these instructions are available to download from [www.rg-racing.com](http://www.rg-racing.com)**

### **GENERAL TORQUE SETTINGS**

- M4 BOLT = 8Nm
- M5 BOLT = 12Nm
- M6 BOLT = 15Nm
- M8 BOLT = 20Nm
- M10 BOLT = 40Nm

R&G Racing  
Unit 1, Shelley's Lane, East Worldham, Alton, Hampshire, GU34 3AQ  
Tel: +44 (0)1420 89007 Fax: +44 (0)1420 87301 [www.rg-racing.com](http://www.rg-racing.com) Email: [info@rg-racing.com](mailto:info@rg-racing.com)



LP0196

Page | 3



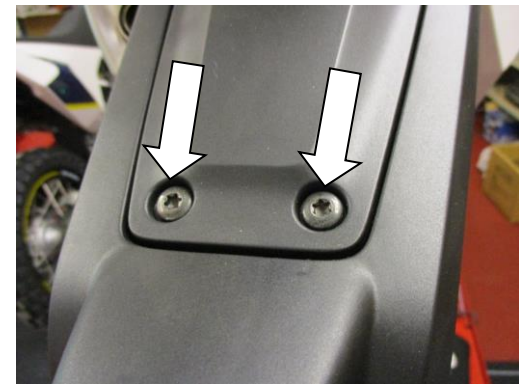
PICTURE 1



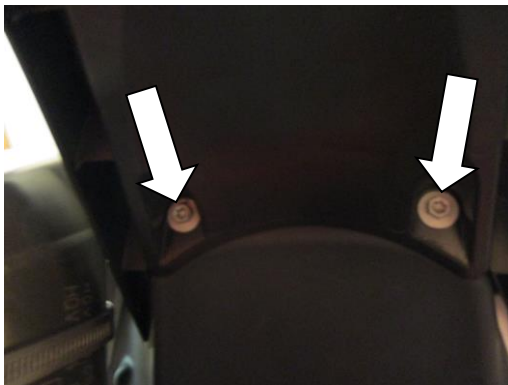
PICTURE 2



PICTURE 3



PICTURE 4



PICTURE 5

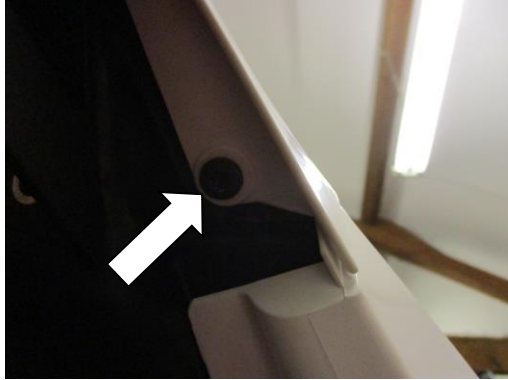


PICTURE 6

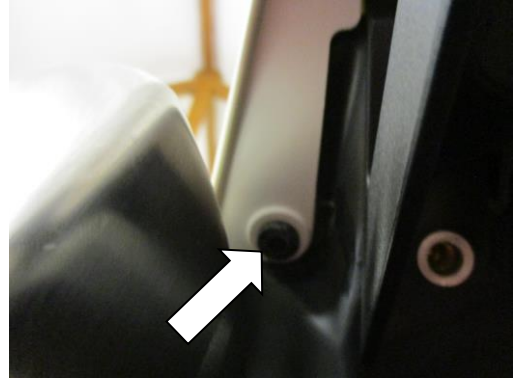


LP0196

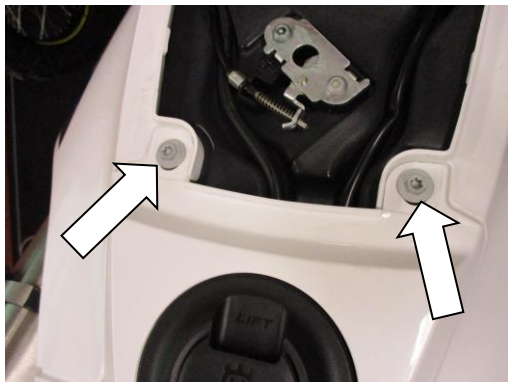
Page | 4



PICTURE 7



PICTURE 8



PICTURE 9



PICTURE 10



PICTURE 11



PICTURE 12

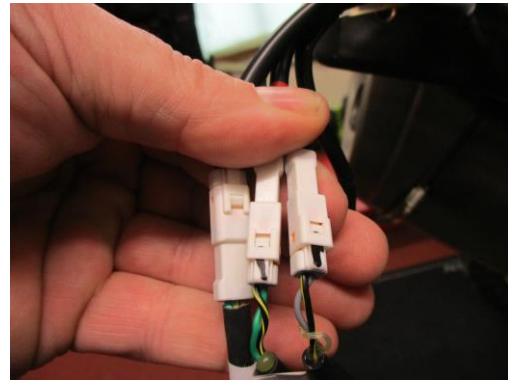


LP0196

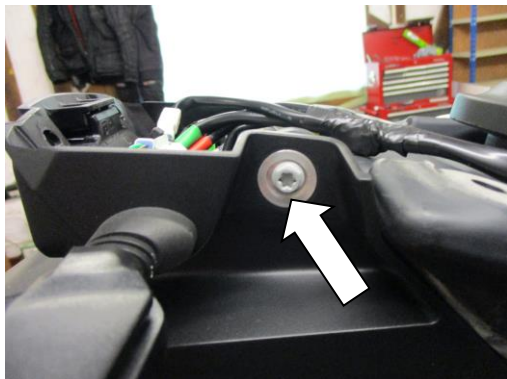
Page | 5



PICTURE 13



PICTURE 14



PICTURE 15



PICTURE 16



PICTURE 17

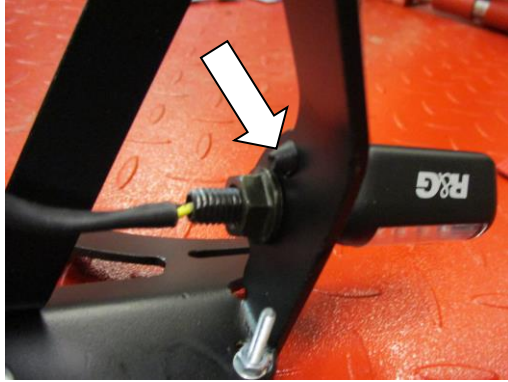


PICTURE 18



LP0196

Page | 6



PICTURE 19



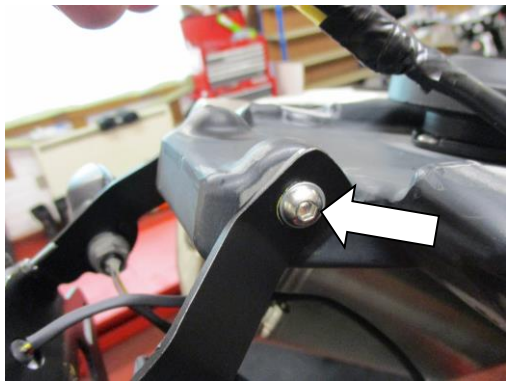
PICTURE 20



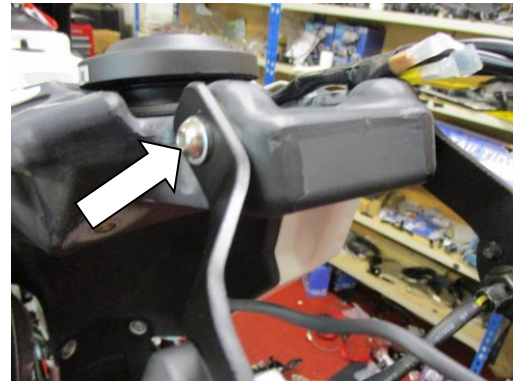
PICTURE 21



PICTURE 22



PICTURE 23



PICTURE 24



LP0196

Page | 7



PICTURE 25



PICTURE 26



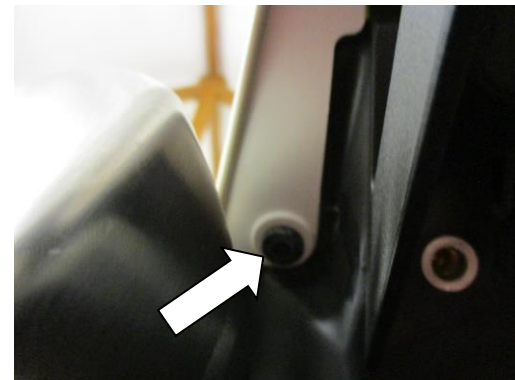
PICTURE 27



PICTURE 28



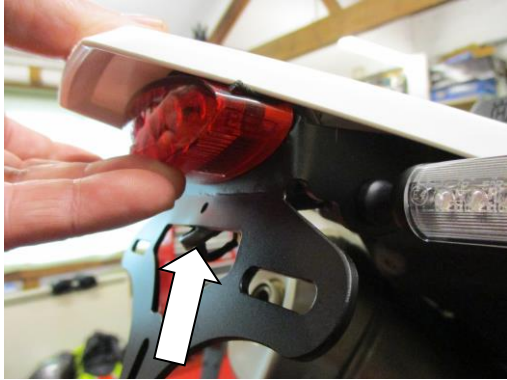
PICTURE 29



PICTURE 30



LP0196



PICTURE 31



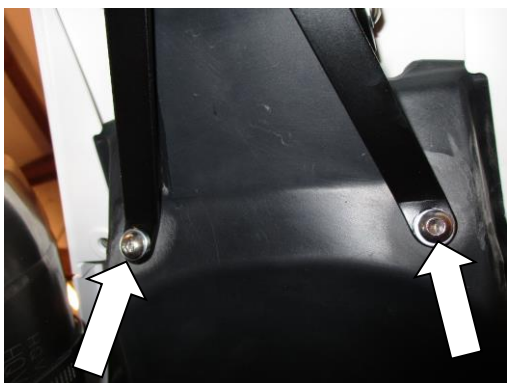
PICTURE 32



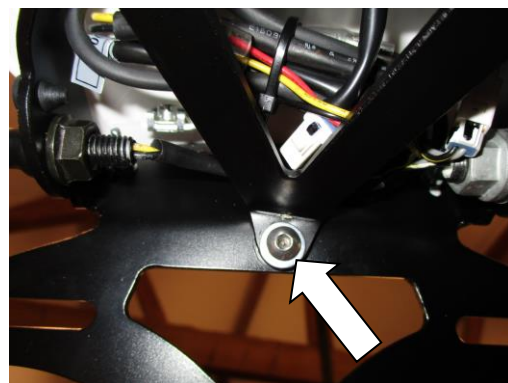
PICTURE 33



PICTURE 34



PICTURE 35



PICTURE 36





LP0196

Page | 9

### FITTING INSTRUCTIONS

- Remove the seat using the pull cable arrowed in picture 1 and unsnapping the two location spigots shown in pictures 2 and 3.
- Remove the four bolts arrowed in pictures 4 and 5 and gently lower the licence plate bracket under-tray as shown in picture 6.
- Disconnect the licence plate illuminator plug socket arrowed in picture 6 and remove the licence plate bracket under-tray.
- Remove the six bolts arrowed in pictures 7, 8, 9 and 10.
- Remove the fuel cap as shown in picture 11.
- Remove the rear cowl as shown in picture 12 and replace the fuel cap until ready for reassembly.
- Remove the cable ties and disconnect the rear light and indicator plug sockets as shown in pictures 13 and 14 (*It's a good idea to mark the matching connectors up at this stage to make re-fitting easier*).
- Remove the two bolts arrowed in pictures 15 and 16 and carefully remove the original licence plate bracket.
- If you intend to re-use the OEM indicators, then remove the indicator mounting nut arrowed in picture 17 then fit to the new licence plate bracket (item 1) as shown in picture 18 (repeat for opposite side noting which side they were removed from).
- If using mini indicators fit the indicators of choice to the new licence plate bracket (item 1) (R&G mini indicator product code RG370 for bulb type and RG371 for LED type or RG372 for Aero Style led type) as shown in picture 19 (please use the provided heat shrink (item 7) to protect the wiring). *If fitting the R&G Mini Indicators, use the two rubber grommets (item 8) to plug the unused holes as arrowed in pictures 19 and 20.*
- Take the R&G Licence Plate Bracket (item 1) and fit the new rear light (item 9), as shown in pictures 19 and 20 (a clear lens option is also available to purchase -- product code LA0003). (Please use the heat shrink (item 7) to protect the new rear light wiring).
- Cut to size and stick the foam strip (item 10) to the upper edge of the light as shown in pictures 21 and 22.
- Offer the licence plate bracket assembly up to the underside of the tail unit (as shown in picture 23, 24 and 25) and use two of the M6 bolts with washers (items 2 and 3) to hold in position as shown in pictures 23, 24 and 25 (do not fully tighten the bolts at this stage).
- Connect the indicator wiring plug sockets (as they were marked up earlier) (if using R&G mini indicators please use the two connectors (item 11= the ones with two wires) to connect to the main loom as shown in picture 26.
- Connect the new rear light to the main loom using the supplied connector (item 12=the one with three wires) as shown in picture 26. Please check the operation of the rear light and indicators at this stage, if the indicator fail to work please swap the connectors over. Please use the supplied cable ties and self-adhesive clips to tidy and secure the wiring.
- Remove the fuel cap and refit the rear cowl as original as shown in picture 27.
- Replace the fuel cap as shown in picture 28.
- Refit the original bolts to secure the rear cowl as shown in pictures 9, 29 and 30 as original (the two bolts shown in picture 10 are not reused).
- Gently push the licence plate bracket into position as shown in picture 31 and tighten the two bolts arrowed in pictures 32 and 33.
- Offer the support bracket (item 4) into position as shown in picture 34 and secure in place using the two remaining M6 bolts and washers (items 2 and 3) as shown in picture 35.
- Use the M5 bolt with washer (items 5 and 6) to secure the support bracket to the licence plate bracket as shown in picture 36.

R&G Racing

Unit 1, Shelley's Lane, East Worldham, Alton, Hampshire, GU34 3AQ

Tel: +44 (0)1420 89007 Fax: +44 (0)1420 87301 [www.rg-racing.com](http://www.rg-racing.com) Email: [info@rg-racing.com](mailto:info@rg-racing.com)



LP0196

- **IMPORTANT: IF FITTING A FULL-SIZE LICENCE PLATE AND PLACING IT FAR DOWN ON THE LICENCE PLATE HANGER, THERE IS A SMALL CHANCE OF THE LICENCE PLATE HITTING THE BACK WHEEL UNDER HEAVY LOAD AND OVER LARGE BUMPS IN THE ROAD. IT IS YOUR RESPONSIBILITY TO CHECK FOR THIS POSSIBILITY AND TAKE AVOIDING ACTION. FAILURE TO CHECK THIS COULD RESULT IN SERIOUS INJURY.**
- Refit the seat unit and licence plate (it may require drilling).
- Depending on local laws, attach enclosed reflector (item 13) in an appropriate location.
- **Please test the indicators, rear light and licence plate illuminator before riding.**

Page | 10

ISSUE 1 22/04/2016 (NSY)

#### CONSUMER NOTICE

The catalogue description and any exhibition of samples are only broad indications of the Products and R&G may make design changes which do not diminish their performance or visual appeal and supplying them in such state shall conform to the order. The Buyer acknowledges no representation or warranty (other than as to title) has been given or will apply to the Products other than those in R&G's order or confirmation and the Buyer confirms it has chosen the Products as being of merchantable quality and suitable for its particular purposes. Where R&G fits the Products or undertakes other services it shall exercise reasonable skill and care and rectify any fault free of charge unless the workmanship has been disturbed. The Buyer is responsible for ensuring that the warranty on the motorcycle is not affected by the fitting of the Products. On return of any defective Products R&G shall at its option either supply a replacement or refund the purchase money but shall not be liable if the Products have been modified or used or maintained otherwise than in accordance with R&G's or manufacturer's instructions and good engineering practice or if the defect arises from accident or neglect. Other than identified above and subject to R&G not limiting its liability for causing death and personal injury, it shall not be liable for indirect or consequential loss and otherwise its liability shall be limited to the amounts paid by the Buyer for the Products or the fitting or service concerned. These terms do not affect the Buyer's statutory rights.

#### R&G RACING RETURNS POLICY (NON-FAULTY GOODS)

Returns must be pre-authorized (if not pre-authorized the return will be rejected). Goods may only be returned direct to us if they were purchased direct from us (customer must prove if necessary). Otherwise to be returned to original vendor. Goods must be in re-sellable condition, in the opinion of R&G Racing. All returns are subject to a 25% restocking and handling fee (25% of the gross value exc. P&P – at the prevailing price at time of purchase). The customer must pay any and all carriage charges. No returns of discontinued products, unless within 14 days of purchase. This policy does not affect your statutory rights and does not refer to faulty goods.

R&G Racing

Unit 1, Shelley's Lane, East Worldham, Alton, Hampshire, GU34 3AQ

Tel: +44 (0)1420 89007 Fax: +44 (0)1420 87301 [www.rg-racing.com](http://www.rg-racing.com) Email: [info@rg-racing.com](mailto:info@rg-racing.com)