



**FITTING INSTRUCTIONS FOR LP0317 LICENCE PLATE BRACKET
HUSQVARNA SVARTPILEN/VITPILEN 125 2021- AND 401 2020-**



This kit contains the items pictured and labelled over page.

Some parts may be shown for clarity of instructions only.

Do not proceed until you are sure all parts are present.

Please read all instructions before proceeding.

**IF IN ANY DOUBT WHEN FITTING OUR PRODUCTS, CONSULT ONE OF OUR DEALERS
OR HAVE FITTED BY A QUALIFIED TECHNICIAN.**

Please note that the way the kit is packed does not necessarily represent the way of mounting to the bike.

In the event of rubber washers being used to hold components onto bolts, these rubber washers can be thrown away.

DIGITAL COPIES OF THESE INSTRUCTIONS ARE AVAILABLE FROM

WWW.RG-RACING.COM

R&G

Unit 1, Shelley's Lane, East Worldham, Alton, Hampshire, GU34 3AQ

Tel: +44 (0)1420 89007 Fax: +44 (0)1420 87301 www.rg-racing.com Email: info@rg-racing.com



<u>TOOLS REQUIRED</u>	<u>GENERAL TORQUE SETTINGS</u>
<ul style="list-style-type: none"> • Set metric Allen keys. • Socket set to include 8, 10, 12 and 13mm A/F socket and wrench. <ul style="list-style-type: none"> • Phillips screwdriver. • Small flat head screwdriver. • Small amount of super glue. 	<p>M4 BOLT = 8Nm</p> <p>M5 BOLT = 12Nm</p> <p>M6 BOLT = 15Nm</p> <p>M8 BOLT = 20Nm</p> <p>M10 BOLT = 40Nm</p> <p>M12 BOLT = 40Nm</p>

LEGEND

ITEM No.	DESCRIPTION	QTY
ITEM 1	TB0317 PART 1 (LICENSE PLATE BRACKET)	1
ITEM 2	TB0317 PART 2 (LICENSE PLATE BRACKET WIRING COVER)	1
ITEM 3	LA0002 (NUMBER PLATE LIGHT)	1
ITEM 4	M8 BUTTON HEAD BOLT (35mm LONG)	4
ITEM 5	M8 WASHER (16mm OD)	4
ITEM 6	M5 CSK BOLT (10mm LONG)	4
ITEM 7	M5 WASHER (12mm OD)	4
ITEM 8	M5 NYLOC NUT	4
ITEM 9	S0834 SPACER (CHAIN GUARD REPLACEMENT SPACER)	1
ITEM 10	CT220 CABLE TIES 220mm LONG	4
ITEM 11	IWC0002 (INDICATOR WIRING COVER)	2
ITEM 12	SELF ADHESIVE CABLE CLIPS	5
ITEM 13	360mm LENGTH OF BLACK RUBBER SEAL	1
ITEM 14	230mm LENGTH OF HEAT SHRINK	3
ITEM 15	CON 13 (INDICATOR AND NUMBER PLATE LIGHT CONNECTORS (OR CON0004 IF NOT IN STOCK)	3
ITEM 16	RUBBER GROMMETS (MINI INDICATOR BLANKING GROMMET)	2
ITEM 17	REFL3 (REFLECTOR)	1

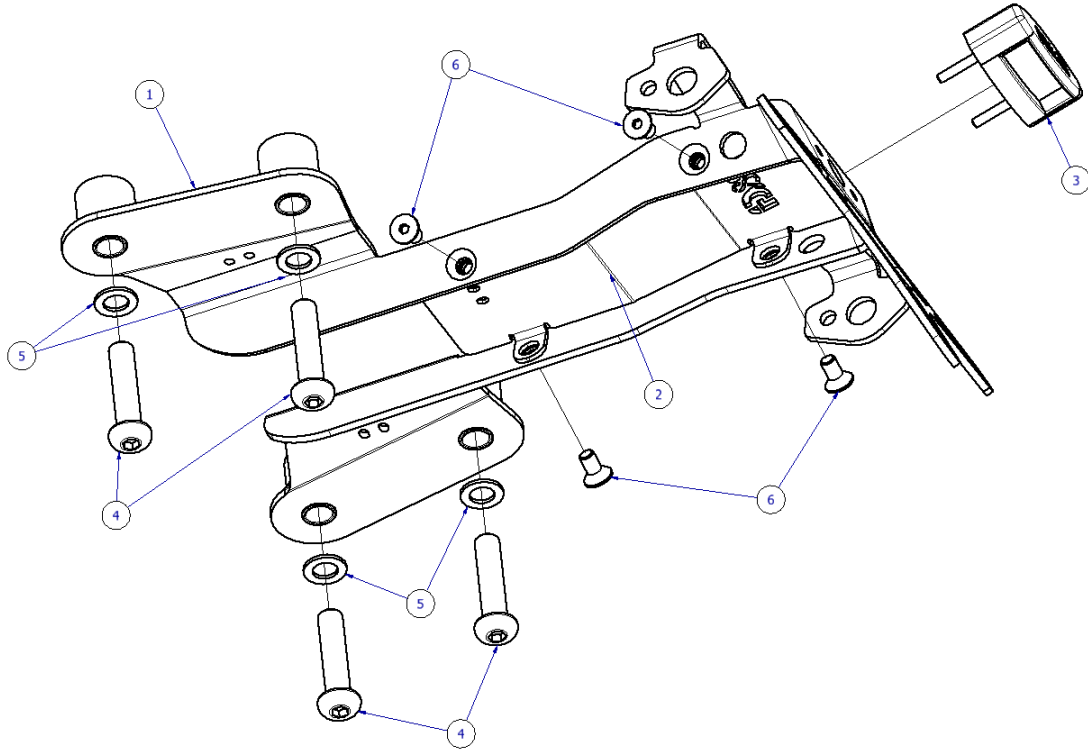
R&G

Unit 1, Shelley's Lane, East Worldham, Alton, Hampshire, GU34 3AQ

Tel: +44 (0)1420 89007 Fax: +44 (0)1420 87301 www.rg-racing.com Email: info@rg-racing.com



ASSEMBLY DIAGRAM 1



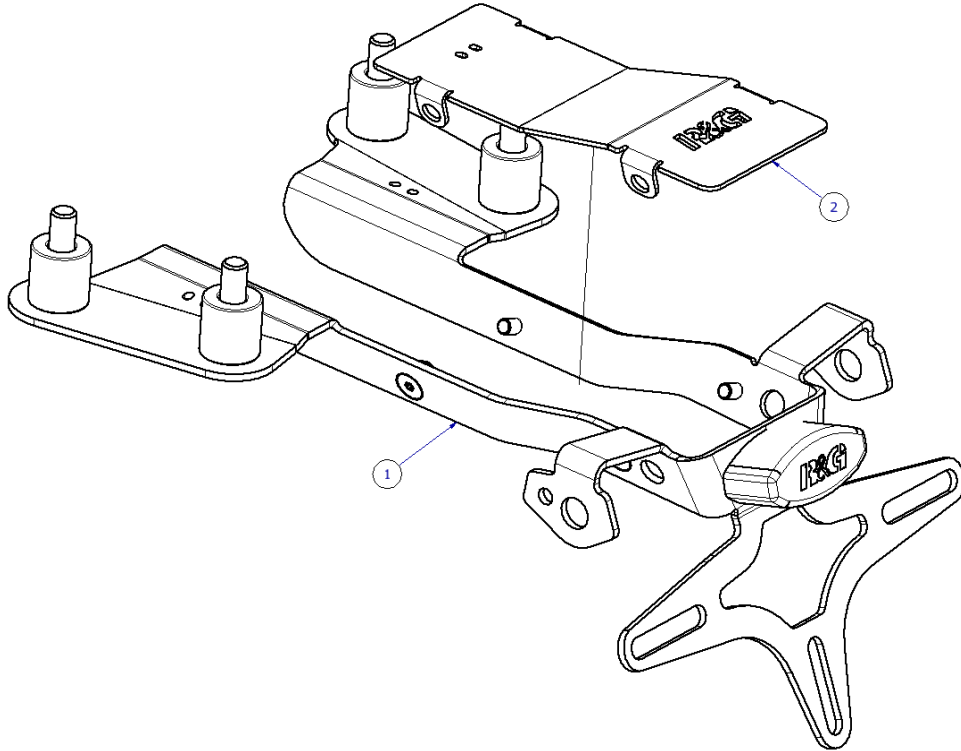
R&G

Unit 1, Shelley's Lane, East Worldham, Alton, Hampshire, GU34 3AQ

Tel: +44 (0)1420 89007 Fax: +44 (0)1420 87301 www.rg-racing.com Email: info@rg-racing.com



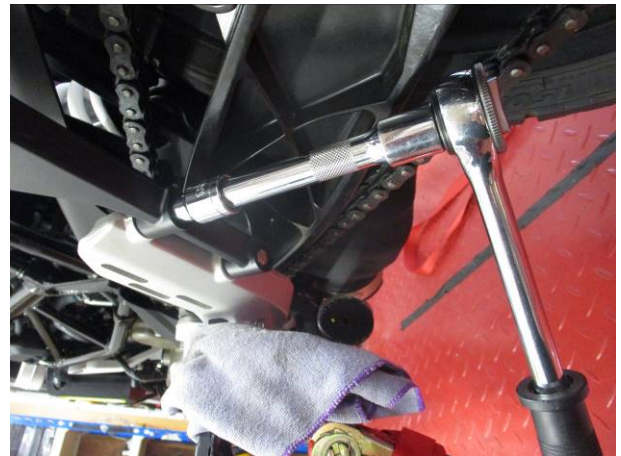
ASSEMBLY DIAGRAM 2



FITTING PICTURES



Picture 1



Picture 2



Picture 3



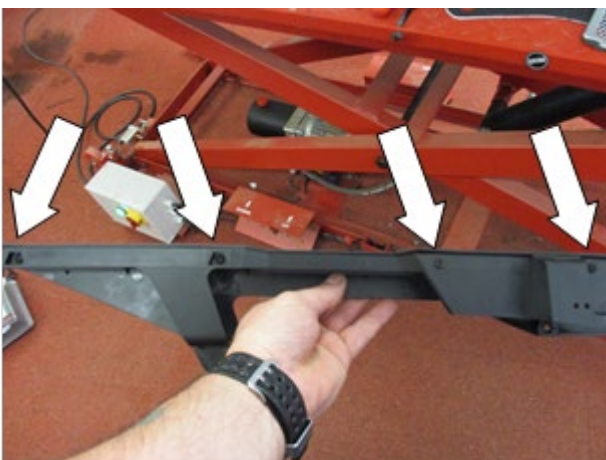
Picture 4



Picture 5



Picture 6



Picture 7



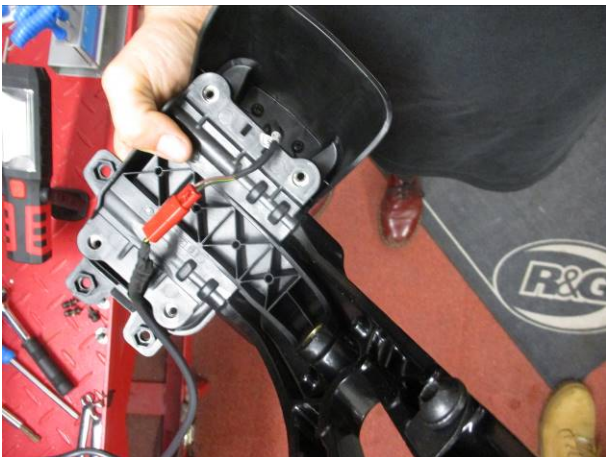
Picture 8



Picture 9



Picture 10



Picture 11



Picture 12



Picture 13



Picture 14



Picture 15



Picture 16



Picture 17



Picture 18

R&G

Unit 1, Shelley's Lane, East Worldham, Alton, Hampshire, GU34 3AQ

Tel: +44 (0)1420 89007 Fax: +44 (0)1420 87301 www.rg-racing.com Email: info@rg-racing.com



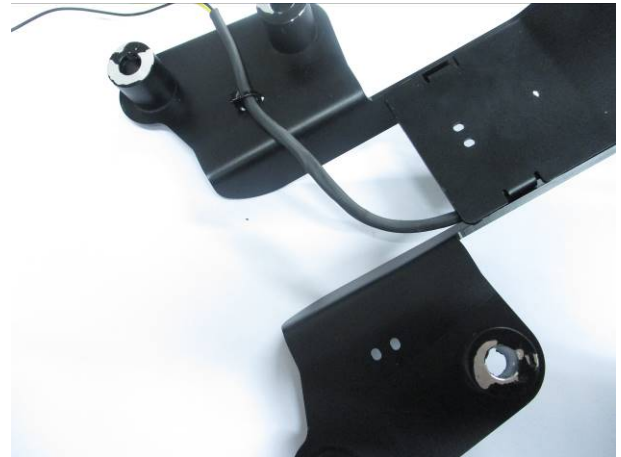
Picture 19



Picture 20



Picture 21



Picture 22



FITTING INSTRUCTIONS

Removal of OEM license plate bracket

- Begin by removing the seat using the key as shown in **Picture 1**.
- To aid removal of the chain guard, remove the LHS pillion foot peg assembly as shown in **Picture 2**.
- To remove the outer section of the chain guard, remove the bolts shown in **Pictures 3, 4, 5 and 6**.
- Now, on the back side of the chain guard, remove the 4 small black screws as shown in **Picture 7**.
- Loosen the bolt shown in **Picture 8** to release the cable from its guide stay.
- To completely remove the OEM license plate bracket, remove the bolt as shown in **Picture 9**.
- The license plate light cable will still be attached so take due care whilst handling this.
- Carefully manoeuvre the OEM license plate bracket so you are presented with the 4 bolts as shown in **Picture 10**.
- Remove the 4 x bolts to uncover the license plate light connector shown in **Picture 11**.
- Gently remove the cable from its secure cable stays as shown in **Picture 12**, along with another clip on the opposite side of the swingarm.
- Carefully feed the cable into the under seat space as shown in **Picture 16**.

Ensure that the wiring does not foul or become trapped during operation.

Assembly of R&G Tail Tidy

- Remove the 2 bolts holding on each indicator as shown in **Picture 13**.
- Disconnect both the LHS and RHS indicator wiring connector on both the LHS and RHS.
- Fit the R&G license plate light (**item 3**) as shown in **Picture 19** and **Assembly Diagram 1**, please note please note you will have to fit the light shroud and use a small amount of adhesive to hold it in position.
- Fit one length of the heat-shrink provided to the wire. It is recommended to re-connect to the wiring loom using the supplied connector (**item 15**) to check at this stage for illumination.
- Assemble the main tail tidy bracket (**item 1**) and wiring cover (**item 2**) as shown in **Assembly Diagram 2**, securing both parts together using the 4 x bolts (**item 6**), washers (**item 7**) and nyloc nuts (**item 8**) provided.

If reusing the original indicators

- Fit the indicators into the new licence plate bracket (**item 1**) and secure as original (please ensure they are fitted to the correct side).
- Use the indicator wiring covers (**item 11**) on both indicators to protect the nut and wiring as shown in **Picture 20**.

R&G

Unit 1, Shelley's Lane, East Worldham, Alton, Hampshire, GU34 3AQ

Tel: +44 (0)1420 89007 Fax: +44 (0)1420 87301 www.rg-racing.com Email: info@rg-racing.com



- Fit one length of heat-shrink (**item 14**) to the wires of each indicator so the heat-shrink fits over the stem of the nut/wire cover and gently heat until the heat-shrink contracts to the wiring and nut/wire cover.
- Tuck the indicator wiring under the nyloc nuts as shown in **Picture 21**.
- Attach the wiring to the tail bracket (**item 1**) using the supplied cable ties into the slots provided as shown in **Picture 22**.
- Connect the indicators to the original loom as unplugged and tuck away carefully into the mounting hole area ensuring the wiring is not pinched between the subframe and main tail bracket (**item 1**).

If using R&G mini indicators

- To fit the R&G Mini Indicators (R&G mini indicator product code RG371 for LED type or RG372 for Aero Style led type).
- Position the two indicators onto the larger hole in the new licence plate bracket, before fitting the flanged nut supplied.
- Use the indicator wiring covers (**item 11**) on both indicators to protect the nut and wiring as shown in **Picture 20**.
- Fit one length of heat-shrink (**item 8**) to the wires of each indicator so the heat-shrink fits over the stem of the nut/wire cover and gently heat until the heat-shrink contracts to the wiring and nut/wire cover.
- Tuck the indicator wiring under the nyloc nuts as shown in **Picture 21**.
- Attach the wiring to the tail bracket (**item 1**) using the supplied cable ties into the slots provided as shown in **Picture 22**.
- Connect the indicators to the original loom using the supplied connector adaptors (**item 15**) and tuck away carefully into the mounting hole area ensuring the wiring is not pinched between the subframe and main tail bracket (**item 1**).
- Fit the two smaller rubber grommets (**item 16**) into the holes as shown in **Picture 21** (it helps if a small amount of liquid detergent is used).

Installation of R&G Tail Tidy

- Attach the tail tidy assembly to the bike using the 4 x bolts (**item 6**) and washers (**item 7**) as shown in **Picture 15**.
- Re-assemble the rear chain guard (without wires) as original as shown in **Picture 17** and refit to the motorcycle using the original bolts, the rearmost bolt will need the 5mm spacer (**item 9**) fitted to it as shown in **Picture 18**.
- Ensure all wiring plug sockets are connected and refit the seat as original and licence plate (license plate may require drilling).
- Depending on local laws, attach enclosed reflector (**item 17**) in an appropriate location.
- Please check the operation of all lights before riding the motorcycle.

IMPORTANT: IF FITTING A FULL-SIZE LICENCE PLATE AND PLACING IT FAR DOWN ON THE LICENCE PLATE HANGER, THERE IS A SMALL CHANCE OF THE LICENCE PLATE HITTING THE BACK WHEEL UNDER HEAVY LOAD AND OVER LARGE BUMPS IN THE

R&G

Unit 1, Shelley's Lane, East Worldham, Alton, Hampshire, GU34 3AQ

Tel: +44 (0)1420 89007 Fax: +44 (0)1420 87301 www.rg-racing.com Email: info@rg-racing.com



ROAD. IT IS YOUR RESPONSIBILITY TO CHECK FOR THIS POSSIBILITY AND TAKE AVOIDING ACTION. FAILURE TO CHECK THIS COULD RESULT IN SERIOUS INJURY.

ISSUE 1 - 16/08/2021 - (AO)

CONSUMER NOTICE

The catalogue description and any exhibition of samples are only broad indications of the Products and R&G may make design changes which do not diminish their performance or visual appeal and supplying them in such state shall conform to the order. The Buyer acknowledges no representation or warranty (other than as to title) has been given or will apply to the Products other than those in R&G's order or confirmation and the Buyer confirms it has chosen the Products as being of merchantable quality and suitable for its particular purposes. Where R&G fits the Products or undertakes other services it shall exercise reasonable skill and care and rectify any fault free of charge unless the workmanship has been disturbed. The Buyer is responsible for ensuring that the warranty on the motorcycle is not affected by the fitting of the Products. On return of any defective Products R&G shall at its option either supply a replacement or refund the purchase money but shall not be liable if the Products have been modified or used or maintained otherwise than in accordance with R&G's or manufacturer's instructions and good engineering practice or if the defect arises from accident or neglect. Other than identified above and subject to R&G not limiting its liability for causing death and personal injury, it shall not be liable for indirect or consequential loss and otherwise its liability shall be limited to the amounts paid by the Buyer for the Products or the fitting or service concerned. These terms do not affect the Buyer's statutory rights.

R&G RACING RETURNS POLICY (NON-FAULTY GOODS)

Returns must be pre-authorized (if not pre-authorized the return will be rejected). Goods may only be returned direct to us if they were purchased direct from us (customer must prove if necessary). Otherwise to be returned to original vendor. Goods must be in re-sellable condition, in the opinion of R&G Racing. All returns are subject to a 25% restocking and handling fee (25% of the gross value exc. P&P – at the prevailing price at time of purchase). The customer must pay any and all carriage charges. No returns of discontinued products, unless within 14 days of purchase. This policy does not affect your statutory rights and does not refer to faulty goods.

R&G

Unit 1, Shelley's Lane, East Worldham, Alton, Hampshire, GU34 3AQ

Tel: +44 (0)1420 89007 Fax: +44 (0)1420 87301 www.rg-racing.com Email: info@rg-racing.com