



**FITTING INSTRUCTIONS FOR CP0473 CRASH PROTECTORS
INDIAN FTR1200 + FTR1200S 2019-**



THIS KIT CONTAINS THE ITEMS PICTURED AND LABELLED OVER PAGE.

SOME PARTS MAY BE SHOWN FOR CLARITY OF INSTRUCTIONS ONLY.

DO NOT PROCEED UNTIL YOU ARE SURE ALL PARTS ARE PRESENT.

PLEASE READ ALL INSTRUCTIONS BEFORE PROCEEDING.

**IF IN ANY DOUBT WHEN FITTING OUR PRODUCTS, CONSULT ONE OF OUR DEALERS
OR HAVE FITTED BY A QUALIFIED TECHNICIAN.**

PLEASE NOTE THAT THE WAY THE KIT IS PACKED DOES NOT NECESSARILY REPRESENT THE WAY OF
MOUNTING TO THE BIKE.

IN THE EVENT OF RUBBER WASHERS BEING USED TO HOLD COMPONENTS ONTO BOLTS,
THESE RUBBER WASHERS CAN BE THROWN AWAY.

DIGITAL COPIES OF THESE INSTRUCTIONS ARE AVAILABLE FROM:

WWW.RG-RACING.COM

R&G Racing

Unit 1, Shelly's Lane, East Worldham, Alton, Hampshire GU34 3AQ.

Tel: +44 (0)1420 89007 Fax +44 (0)1420 87301 www.rg-racing.com Email: info@rg-racing.com



<u>TOOLS REQUIRED</u>	<u>GENERAL TORQUE SETTINGS</u>
<ul style="list-style-type: none"> SOCKET AND RATCHET SET TO INCLUDE 18mm AND 19mm SOCKETS 	<p>M4 BOLT = 8Nm M5 BOLT = 12Nm M6 BOLT = 15Nm M8 BOLT = 20Nm M10 BOLT = 40Nm M12 BOLT = 40Nm</p>

LEGEND

ITEM No.	DESCRIPTION	QTY
ITEM 1	B0061 12MM CRASH PROTECTOR	2
ITEM 2	BC0002 BOBBIN CAP	2
ITEM 3	S1207—77MM SPACER LHS	1
ITEM 4	S0503—67MM SPACER RHS	1
ITEM 5	M12 x 1.75 x 140mm HEX HEAD BOLT LHS	1
ITEM 6	M12 x 1.75 x 130mm HEX HEAD BOLT RHS	1
ITEM 7	M12 x 25 O/D WASHER	2
ITEM 8	SHAKE PROOF WASHER	2

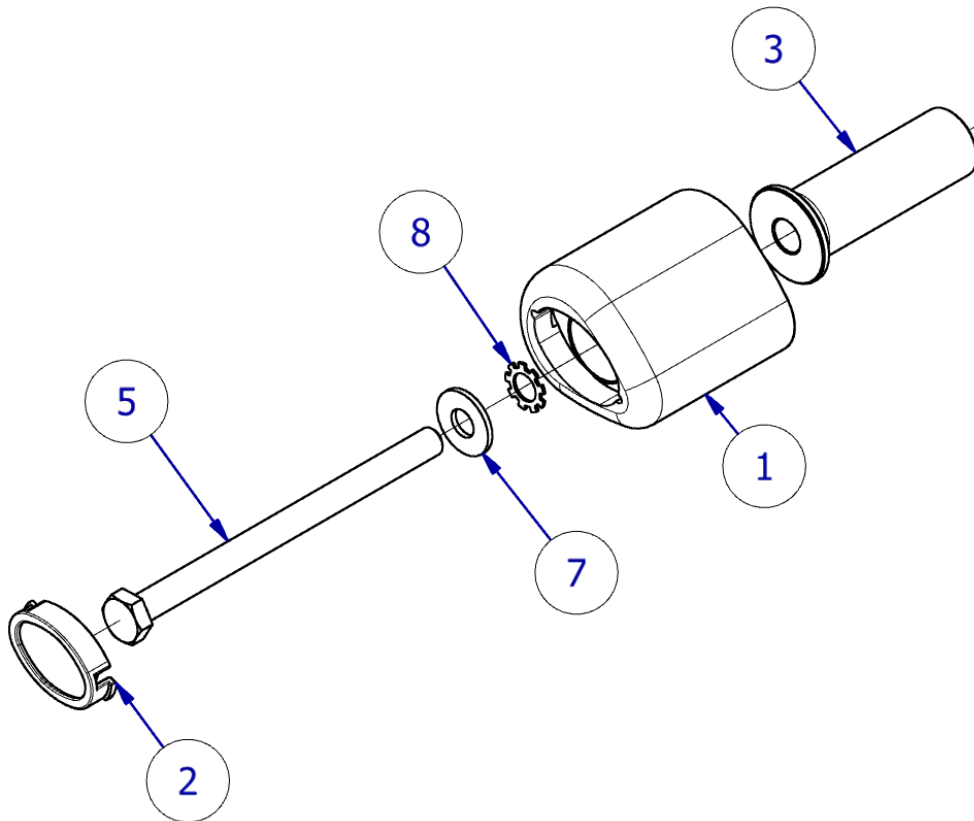
AERO STYLE CRASH PROTECTOR ORIENTATION



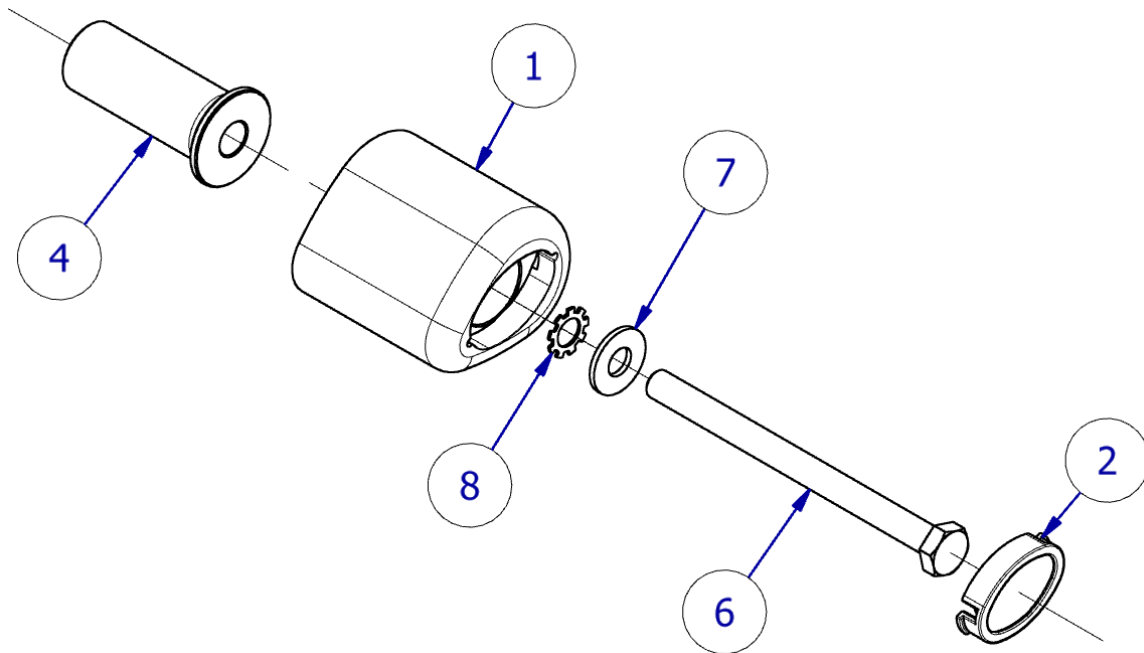
R&G Racing

Unit 1, Shelly's Lane, East Worldham, Alton, Hampshire GU34 3AQ.

Tel: +44 (0)1420 89007 Fax +44 (0)1420 87301 www.rg-racing.com Email: info@rg-racing.com



ASSEMBLY DIAGRAM 1—LHS

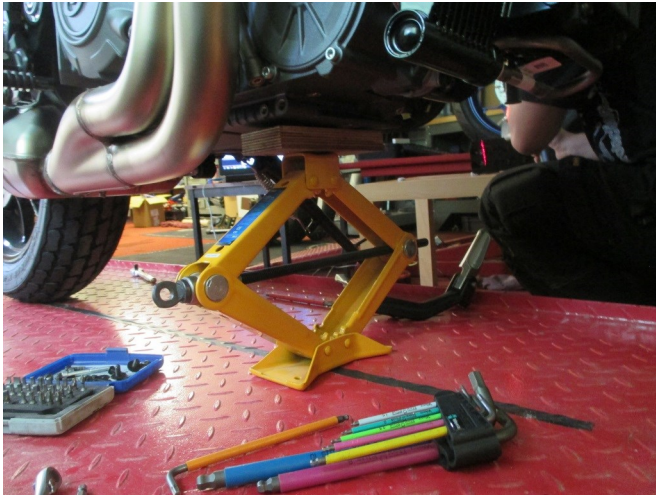


ASSEMBLY DIAGRAM 2—RHS

R&G Racing

Unit 1, Shelly's Lane, East Worldham, Alton, Hampshire GU34 3AQ.

Tel: +44 (0)1420 89007 Fax +44 (0)1420 87301 www.rg-racing.com Email: info@rg-racing.com



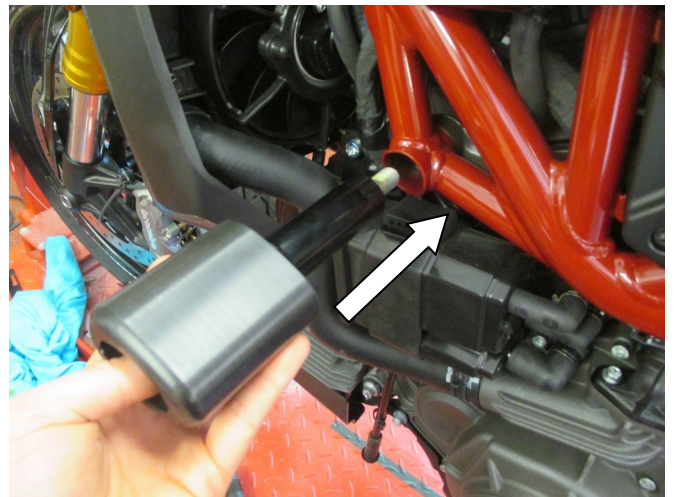
Picture 1



Picture 2



Picture 3



Picture 4



Picture 5

R&G Racing

Unit 1, Shelly's Lane, East Worldham, Alton, Hampshire GU34 3AQ.

Tel: +44 (0)1420 89007 Fax +44 (0)1420 87301 www.rg-racing.com Email: info@rg-racing.com



FITTING INSTRUCTIONS

Left Hand Side (as you sit on the bike)

- **Before fitting the R&G crash protectors, it is advised that a jack is positioned underneath the bike at a suitable point to support the weight of the engine during fitment as in picture 1. A small piece of wood should also be placed between the jack and the mounting point to help to spread the load.**
- **Do not remove more than one engine bolt at any time during the fitting to prevent the engine moving.**
- Starting on the left hand side of the bike, remove the engine bolt arrowed in **picture 2** using an 18mm socket and ratchet, making sure to remove the OEM spacer arrowed in **picture 3**.
- Assemble the left-hand side crash protector as shown in **Assembly Diagram 1** on page 3 by sliding one M12 washer (item 7) and Shake Proof Washer (item 8) over the longer M12 x 140mm bolt (item 5).
- Next, slide one crash protector (item 1) over the thread of the bolt so the head of the bolt sits into the recess of the crash protector.
- Slide the longer spacer over the exposed thread with the larger diameter sitting against the flat surface of the crash protector.
- Insert the assembly in place of the original bolt and spacer assembly removed earlier as shown in **picture 4**.
- **PLEASE NOTE, THE CRASH PROTECTOR MUST BE POSITIONED AS IN THE CRASH PROTECTOR ORIENTATION DIAGRAM ON PAGE 2, WITH THE LARGER END TOWARDS THE FRONT OF THE BIKE.**
- Tighten the bolt using a 19mm socket and torque wrench to the recommended torque before proceeding to the opposite side.

Right Hand Side (as you sit on the bike)

- Repeat the same steps as above on the right hand side of the bike, referring to **Assembly Diagram 2** on page 3, ensuring to use the shorter M12 x 130mm bolt (item 6) and remaining shorter spacer (item 4) during assembly.
- If not already fitted, fit bubble stickers into recess of both crash protector caps.
- Fit 1 x BC0002 Bobbin cap (item 2) into the recess of each crash protector as shown in **picture 5**.
- Before riding, check both sides are secure, and the crash protectors cannot rotate.
- Check tightness of each side regularly.

ISSUE 1 12/08/2019 (DM)

R&G Racing

Unit 1, Shelly's Lane, East Worldham, Alton, Hampshire GU34 3AQ.

Tel: +44 (0)1420 89007 Fax +44 (0)1420 87301 www.rg-racing.com Email: info@rg-racing.com