



FITTING INSTRUCTIONS FOR LP0266BK LICENCE PLATE BRACKET
KTM 690 SMC-R 2019-
(FOR USE WITH STANDARD AND R&G MINI INDICATORS (8mm))



THIS KIT CONTAINS THE ITEMS PICTURED AND LABELLED BELOW.
DO NOT PROCEED UNTIL YOU ARE SURE ALL PARTS ARE PRESENT.

Please note that the way the kit is packed does not necessarily represent the way of mounting to the
bike

THE PARTS SHOWN MAY BE REPRESENTATIVE ONLY (FOR CLARITY OF INSTRUCTIONS ONLY)

Digital copies of these instructions are available to download from www.rg-racing.com

GENERAL TORQUE SETTINGS

M4 BOLT = 8Nm
M5 BOLT = 12Nm
M6 BOLT = 15Nm
M8 BOLT = 20Nm
M10 BOLT = 40Nm

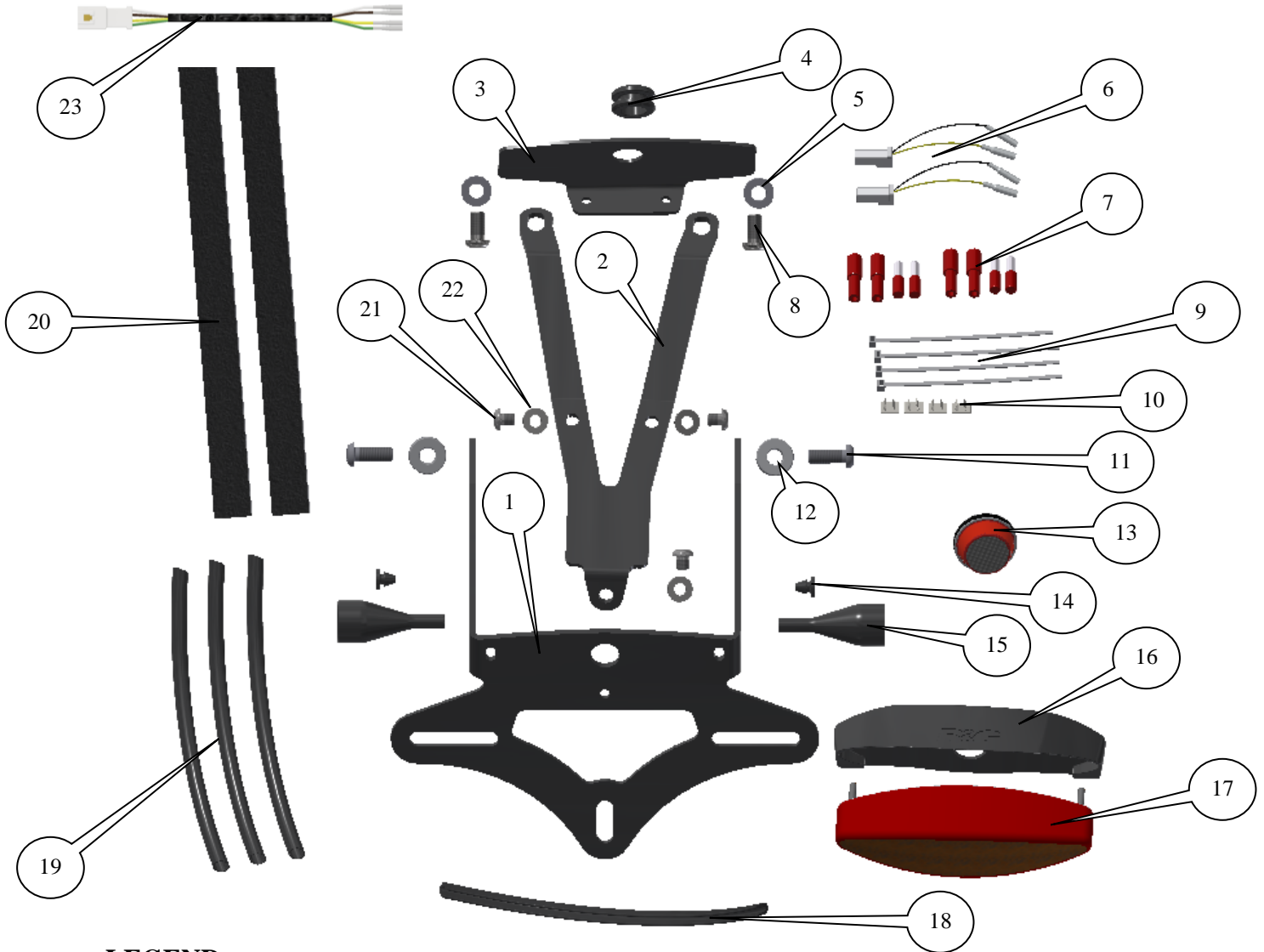
Please note that in cases where kits are packed with rubber washers holding the components onto the bolt
– *the rubber washers should be thrown away!*

TOOLS REQUIRED

- Set of metric Allen keys to include 3 and 4mm A/F .
- Socket set to include 8, 12 and 13mm A/F sockets and wrench.
 - T25 and T30 Torx bit or key.
 - 6 and 13mm Spanners.
 - Small amount of super glue.
 - Phillips driver.
 - Heat gun or hair dryer.

R&G Racing

Unit 1, Shelley's Lane, East Worldham, Alton, Hampshire, GU34 3AQ
Tel: +44 (0)1420 89007 Fax: +44 (0)1420 87301 www.rg-racing.com
Email: info@rg-racing.com



LEGEND

- ITEM 1 = LICENCE PLATE BRACKET (TB0266 PART 1) (x1).
- ITEM 2 = SUPPORT BRACKET (TB0266 PART 2) (x1).
- ITEM 3 = COVER SEAL BRACKET (TB0266 PART 3) (x1).
- ITEM 4 = RUBBER WIRING GROMMET (RB0010) (x1).
- ITEM 5 = M6 WASHERS (x2).
- ITEM 6 = INDICATOR CONNECTORS (CON0014) (x2).
- ITEM 7 = TAIL LIGHT CONNECTORS (CON0004) (x2).
- ITEM 8 = M6 x 12mm LONG BUTTON HEAD BOLTS (x2).
- ITEM 9 = CABLE TIES (x4).
- ITEM 10 = CABLE CLIPS (x4).

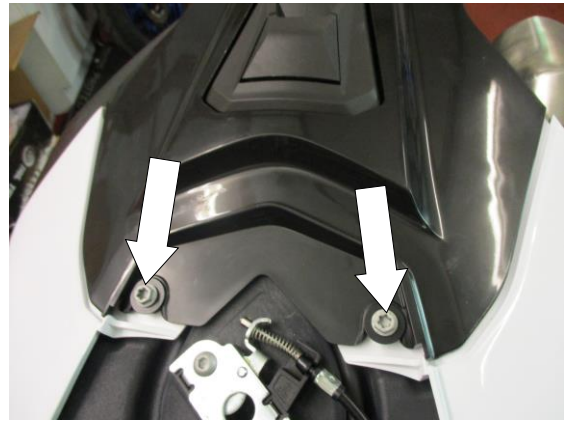
R&G Racing
 Unit 1, Shelley's Lane, East Worldham, Alton, Hampshire, GU34 3AQ
 Tel: +44 (0)1420 89007 Fax: +44 (0)1420 87301 www.rg-racing.com
 Email: info@rg-racing.com



- ITEM 11 = M6 x 16mm LONG BUTTON HEAD BOLTS (x2).
- ITEM 12 = SIDE MOUNT SPACERS (S0802=3mm THICK) (x2).
- ITEM 13 = REFLECTOR (REFL 1) (x1).
- ITEM 14 = BLANKING GROMMETS (RB50-20-00FG) (x2).
- ITEM 15 = IWC0002 MINI INDICATOR WIRING COVERS (x2).
- ITEM 16 = REAR LIGHT SHROUD (LA0003 SHROUD) (x1).
- ITEM 17 = REAR LIGHT (LA0003) (x1).
- ITEM 18 = RUBBER U CHANNEL (SRS004 x 200mm LONG) (x1).
- ITEM 19 = 150mm LENGTHS OF HEAT SHRINK (x3).
- ITEM 20 = SELF ADHESIVE FOAM (150mm LONG) (x20)
- ITEM 21 = M5 x 6mm LONG BUTTON HEAD BOLTS (x3).
- ITEM 22 = M5 WASHERS (x3).
- ITEM 23 = TAIL LIGHT CONNECTOR (CON0061) (x1).



Picture 1



Picture 2



Picture 3



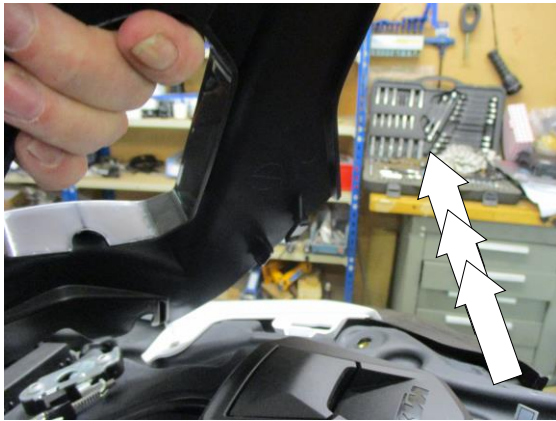
Picture 4



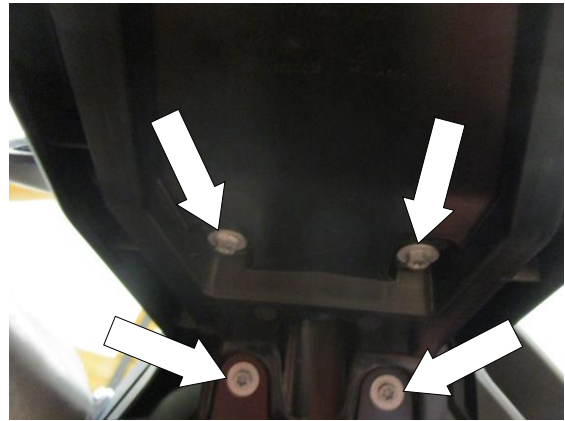
Picture 5



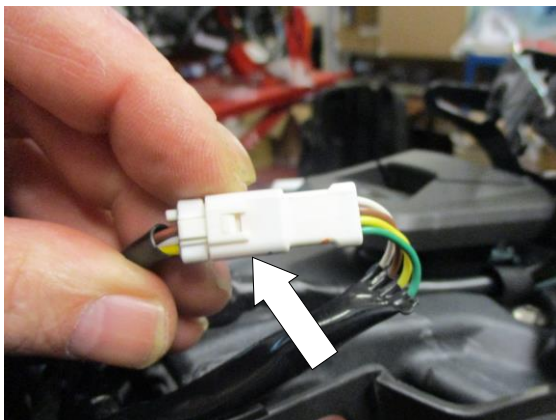
Picture 6



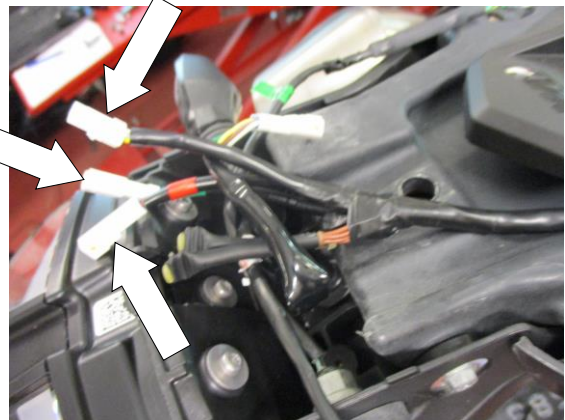
Picture 7



Picture 8



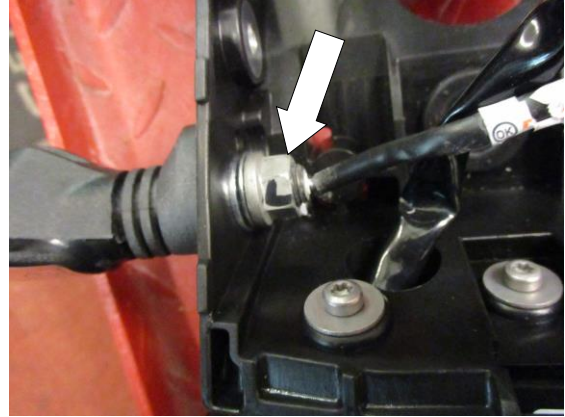
Picture 9



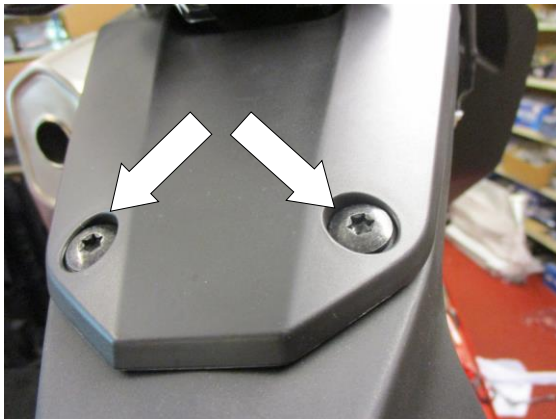
Picture 10



Picture 11



Picture 12



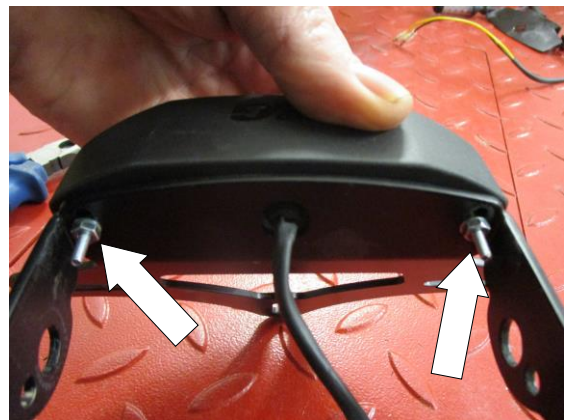
Picture 13



Picture 14



Picture 15



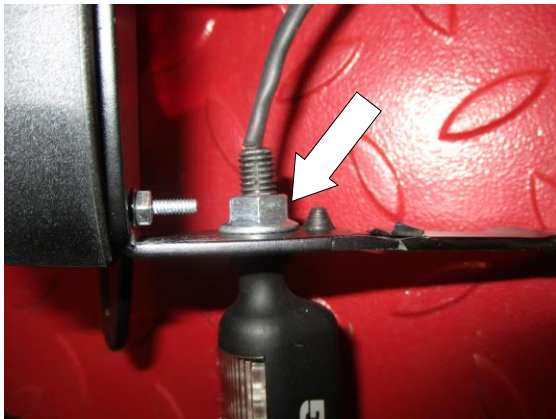
Picture 16



Picture 17



Picture 18



Picture 19



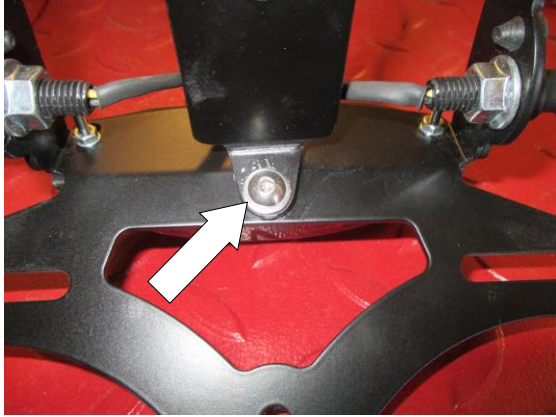
Picture 20



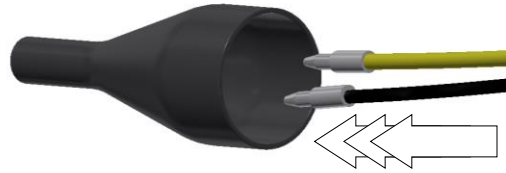
Picture 21



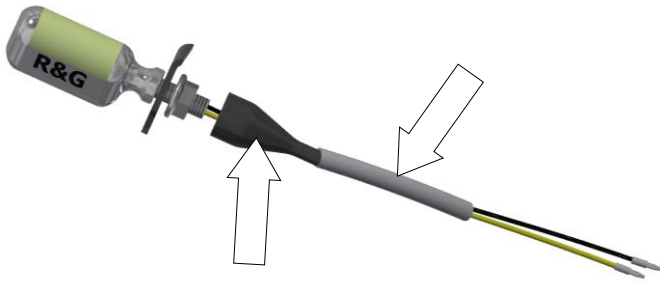
Picture 22



Picture 23



Picture 24



Picture 25



Picture 26



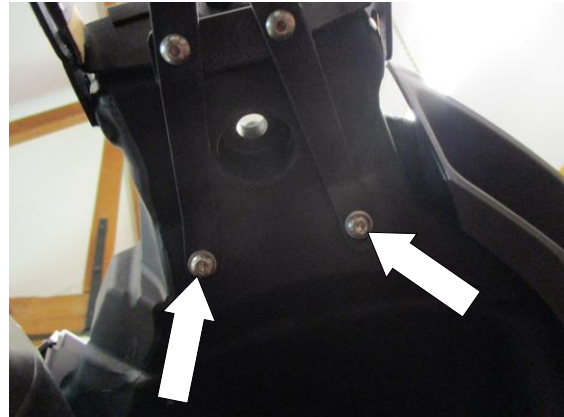
Picture 27



Picture 28



Picture 29



Picture 30

FITTING INSTRUCTIONS

- Remove the seat using the pull cable arrowed in picture 1.
- Remove the two bolts and spacers arrowed in picture 2.
- Remove the bolt arrowed in picture 3 (this allows easier removal of the fuel cap surround).
- Remove the bolt arrowed in picture 4.
- Remove the two bolts and spacers arrowed in pictures 5 and 6, then carefully remove the fuel cap surround as shown in picture 7.
- Remove the four bolts arrowed in picture 8.
- Unplug the rear light and indicator wiring plug socket as arrowed in picture 9.
- Unplug the individual rear light and indicator wiring plug sockets as arrowed in picture 10.
- If you intend to re-use the OEM indicators, then remove the indicator mounting nut arrowed in pictures 11 and 12 (noting which side they were removed from).
- Remove the two bolts arrowed in picture 13.
- Feed the wires from the new rear light (item 17) through the rear light shroud (item 16) as shown in picture 14 and push the shroud over the rear light (please ensure the licence plate illuminator faces away from the shroud).
- Offer this assembly into the two slotted holes in the new licence plate bracket (item 1) as shown in picture 15, then secure using the nuts and washers supplied as shown in picture 16 (Please use the heat shrink (item 19) to protect the new rear light wiring).
- Cut to size and stick the foam strip (item 20) to the upper face of the light shroud.

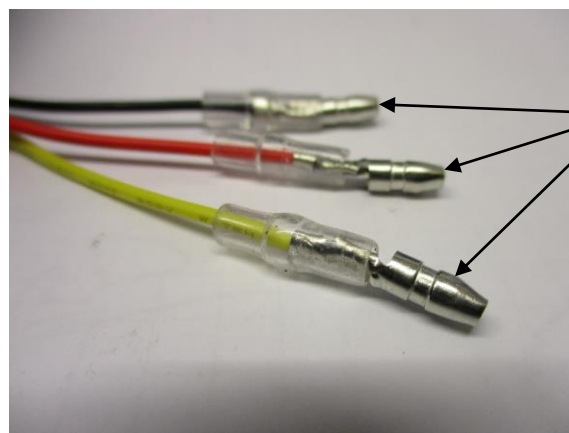
If using R&G mini indicators

- If using mini indicators, fit the indicators of choice to the new licence plate bracket (item 1) (R&G mini indicator product code RG371 for LED type or RG372 for Aero Style led type) as shown in picture 18. *Use the two rubber grommets (item 14) to plug the unused holes as arrowed in picture 17.*
- Secure the mini indicator in position using the M8 nut provided as shown in picture 19.



If reusing the original indicators

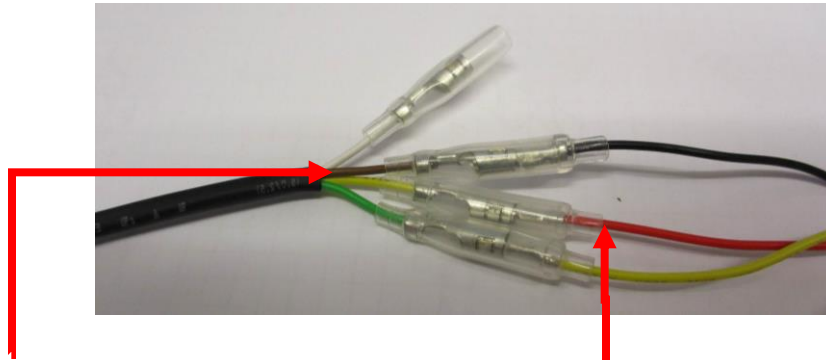
- If using the original indicators, please fit to the new licence plate bracket (item 1) as shown in picture 27 (and then repeat for the opposite indicator).
- Cut and fit the rubber U channel (item 18) to the cover/sealing bracket (item 3) as shown in picture 20.
- Fit the rubber wiring grommet (item 4) to the sealing bracket as shown in picture 21.
- Fit the sealing bracket assembly to the support bracket (item 2) using two of the M5 button head bolts (item 21) with washers (item 22) as shown in picture 22.
- Fit this assembly to the main licence plate bracket (item 1) as shown in picture 23 using the remaining M5 button head bolt with washer (items 21 and 22).
- Feed the indicator wiring through the nut/wire cover (item 15) as shown in pictures 24 and 25 (it helps if a small amount of liquid detergent is used) and position the nut cover over the nut.
- Fit one length of heat-shrink (item 19) to each of the wires of the indicators so it goes over the tail of the nut/wire covers (as shown in picture 25) and carefully warm to shrink heat-shrink to fit.
- Repeat the above for the opposite indicator.
- Feed all the wiring through the wiring grommet as shown in picture 26.
- Offer the entire assembly up to the motorcycle and secure in position using the longer M6 bolts (item 11) and the washer type spacers (item 12) as shown in pictures 28 and 29 (do not fully tighten at this stage).
- Secure the support bracket using the shorter M6 bolts (item 8) with washers (item 5) as shown in picture 30 (do not fully tighten at this stage).
- Connect the original indicator wiring plug sockets (please ensure they connected to the correct socket) (if using R&G mini indicators please use the two connectors (item 6= the ones with two wires) to connect to the main loom as shown in picture 26 (you may have to use a resistor to achieve the correct flash rate (product code RGR0003). If the indicators fail to function, please swap the connectors over. Please use the supplied cable ties and self-adhesive clips to tidy and secure the wiring.
- Using the male bullet connectors supplied (item 7) fit to the new rear light wiring as shown below re-attach the rear light wiring as shown below.



BULLET CONNECTORS
(ITEM 7)



- Then connect the supplied connector (item 23) to the rear light as shown and detailed below.



CON0061 WIRES-----REAR LIGHT WIRES
 BROWN-----BLACK=EARTH/RETURN
 YELLOW-----RED=BRAKE LIGHT
 GREEN-----YELLOW=RUNNING/SIDE LIGHT AND
 LICENCE PLATE ILLUMINATOR

Do not connect the white wire

- Connect the new wiring connector (item 23) to the rear light plug socket, it is a good idea to test indicators and rear light operation at this stage, *if any lights do not illuminate, switch the bullet connectors around.* Please use the supplied cable ties and self-adhesive clips to tidy and secure the wiring.
- Alternatively, you can cut and shut (or solder) the original plug socket from the original rear light using the bullet connectors (item 7) as detailed below.

OEM WIRES-----R&G WIRES
 GREEN----- YELLOW=RUNNING/SIDE LIGHT AND LICENCE
 PLATE ILLUMINATOR
 YELLOW----- RED=BRAKE LIGHT
 BROWN----- BLACK=EARTH/RETURN

• **Do not connect the white wire**

- Take the OEM tail light with the connectors on, and cut the wires, about 4cm up from the connector. Strip back the ends of the three wires and fit three **female** bullet connectors supplied (item 6 – CON0004).
- Connect three **male** bullet connectors to the new tail light wiring and connect as indicated above. Reconnect the rear light plug socket, it is a good idea to test indicators and rear light operation at this stage, *if any lights do not illuminate, switch the bullet connectors around.* Please use the supplied cable ties and self-adhesive clips to tidy and secure the wiring.
- Refit the fuel cap surround as original.
- Tighten all bolts when happy with the positioning.



- **IMPORTANT: IF FITTING A FULL-SIZE LICENCE PLATE AND PLACING IT FAR DOWN ON THE LICENCE PLATE HANGER, THERE IS A SMALL CHANCE OF THE LICENCE PLATE HITTING THE BACK WHEEL UNDER HEAVY LOAD AND OVER LARGE BUMPS IN THE ROAD. IT IS YOUR RESPONSIBILITY TO CHECK FOR THIS POSSIBILITY AND TAKE AVOIDING ACTION. FAILURE TO CHECK THIS COULD RESULT IN SERIOUS INJURY.**
- Refit the seat unit and licence plate (it may require drilling).
- Depending on local laws, attach enclosed reflector (item 13) in an appropriate location.
- **Please test the indicators, rear light and licence plate illuminator before riding.**

ISSUE 2 24/09/2019 (NSY)

CONSUMER NOTICE

The catalogue description and any exhibition of samples are only broad indications of the Products and R&G may make design changes which do not diminish their performance or visual appeal and supplying them in such state shall conform to the order. The Buyer acknowledges no representation or warranty (other than as to title) has been given or will apply to the Products other than those in R&G's order or confirmation and the Buyer confirms it has chosen the Products as being of merchantable quality and suitable for its particular purposes. Where R&G fits the Products or undertakes other services it shall exercise reasonable skill and care and rectify any fault free of charge unless the workmanship has been disturbed. The Buyer is responsible for ensuring that the warranty on the motorcycle is not affected by the fitting of the Products. On return of any defective Products R&G shall at its option either supply a replacement or refund the purchase money but shall not be liable if the Products have been modified or used or maintained otherwise than in accordance with R&G's or manufacturer's instructions and good engineering practice or if the defect arises from accident or neglect. Other than identified above and subject to R&G not limiting its liability for causing death and personal injury, it shall not be liable for indirect or consequential loss and otherwise its liability shall be limited to the amounts paid by the Buyer for the Products or the fitting or service concerned. These terms do not affect the Buyer's statutory rights.

R&G RACING RETURNS POLICY (NON-FAULTY GOODS)

Returns must be pre-authorised (if not pre-authorised the return will be rejected). Goods may only be returned direct to us if they were purchased direct from us (customer must prove if necessary). Otherwise to be returned to original vendor. Goods must be in re-sellable condition, in the opinion of R&G Racing. All returns are subject to a 25% restocking and handling fee (25% of the gross value exc. P&P – at the prevailing price at time of purchase). The customer must pay any and all carriage charges. No returns of discontinued products, unless within 14 days of purchase. This policy does not affect your statutory rights and does not refer to faulty goods.

R&G Racing
Unit 1, Shelley's Lane, East Worldham, Alton, Hampshire, GU34 3AQ
Tel: +44 (0)1420 89007 Fax: +44 (0)1420 87301 www.rg-racing.com
Email: info@rg-racing.com