



FITTING INSTRUCTIONS FOR AB0036 ADVENTURE BARS
KTM 790 DUKE 2018-



THIS KIT CONTAINS THE ITEMS PICTURED AND LABELLED BELOW.
DO NOT PROCEED UNTIL YOU ARE SURE ALL PARTS ARE PRESENT.

Please note that the way the kit is packed does not necessarily represent the way of mounting to the bike.

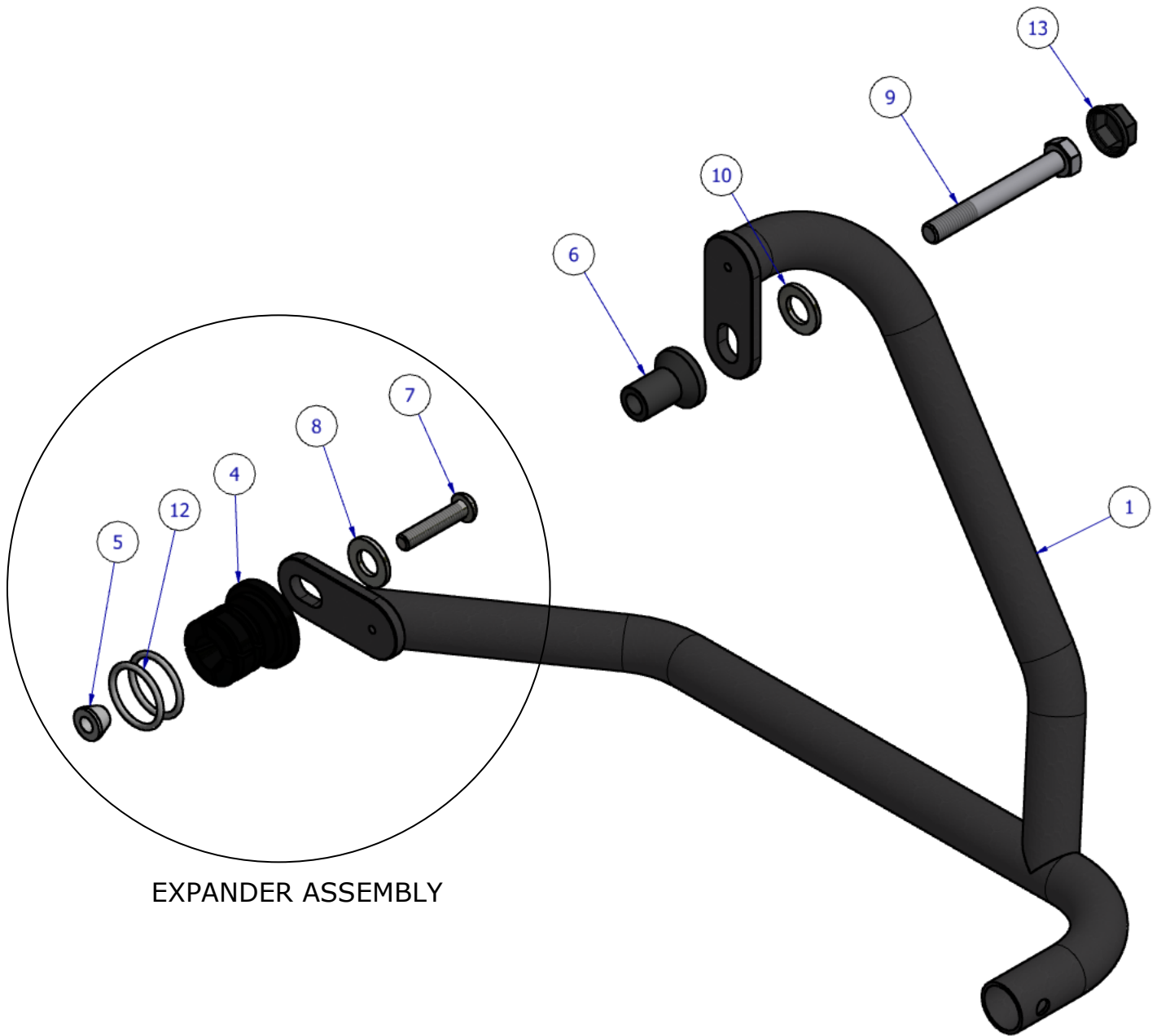
THE PARTS SHOWN MAY BE REPRESENTATIVE ONLY (FOR CLARITY OF INSTRUCTIONS ONLY).

Please note that in cases where kits are packed with rubber washers holding the components onto the bolt – *the rubber washers should be thrown away!*

Digital copies of these instructions are available to download from www.rg-racing.com



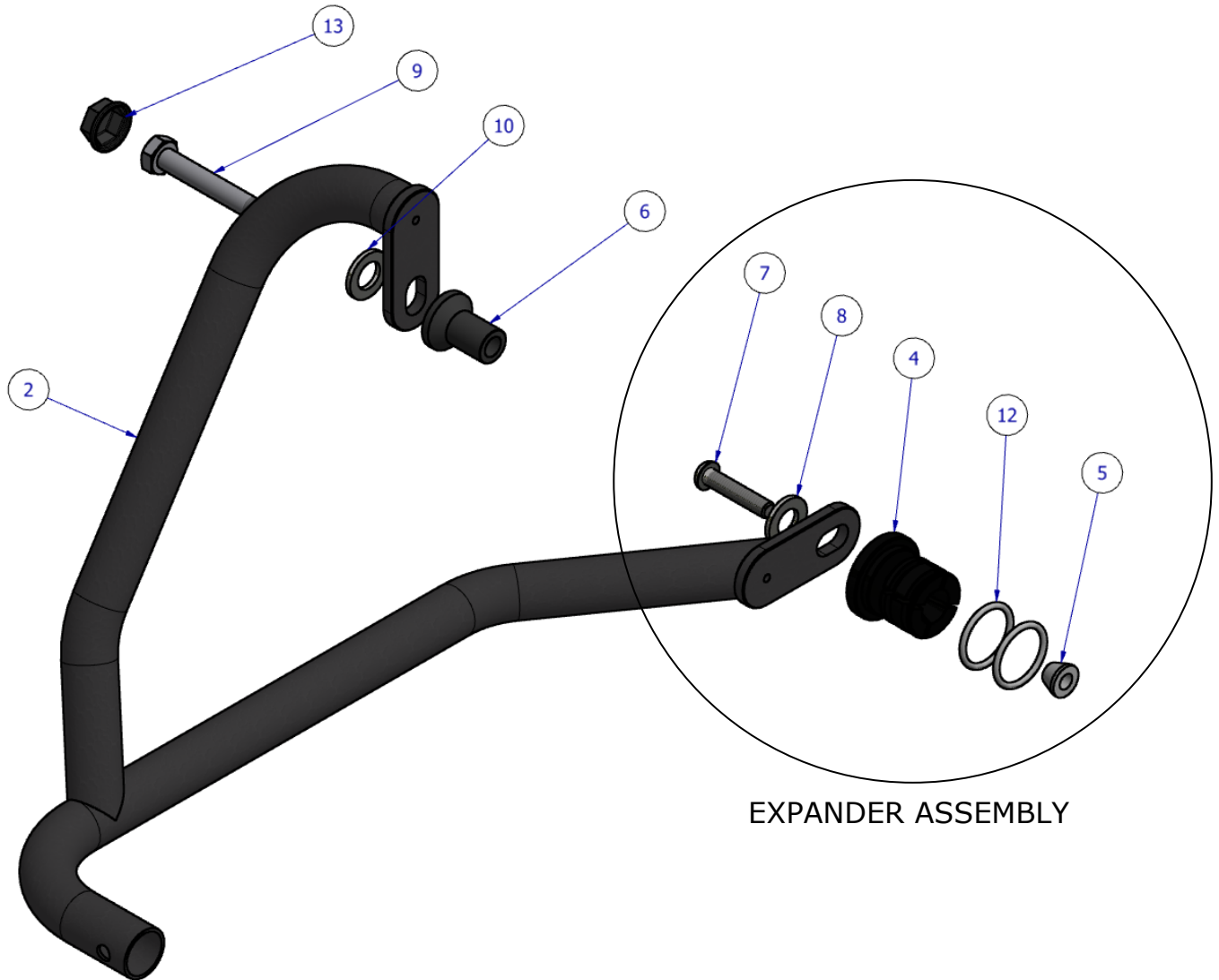
LEFT HAND SIDE (AS YOU SIT ON THE BIKE)
ASSEMBLY DIAGRAM 1



EXPANDER ASSEMBLY



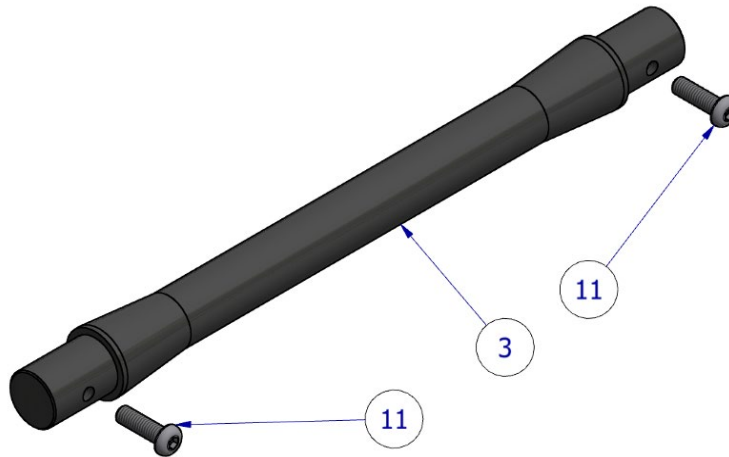
RIGHT HAND SIDE (AS YOU SIT ON THE BIKE)
ASSEMBLY DIAGRAM 2



EXPANDER ASSEMBLY



Central Connector Bar - Assembly Diagram 3



LEGEND

- ITEM 1 - 1 x CB071 LHS CRASH BAR
- ITEM 2 - 1 x CB072 RHS CRASH BAR
- ITEM 3 - 1 x M0571 CENTRAL CONNECTOR BAR
- ITEM 4 - 2 x F0036 FRAME EXPANDERS
- ITEM 5 - 2 x H0047 FRAME INSERT/EXPANDER NUT
- ITEM 6 - 2 x S1160 (UPPER FRAME SPACERS)
- ITEM 7 - 2 x M8 x 1.25 x 35mm LONG BUTTON HEAD BOLT
- ITEM 8 - 2 x M8 WASHER
- ITEM 9 - 2 x M10 x 1.5 x 80MM HEX HEAD (UPPER FRAME MOUNT BOLTS)
- ITEM 10 - 2 x M10 OD 25MM WASHER
- ITEM 11 - 2 x M6 x 20mm BUTTON HEAD BOLT (CONNECTOR BAR FASTENERS)
- ITEM 12 - 4 x O-RINGS 24mm ID & 3mm THICK (2 PER F0036)
- ITEM 13 - 2 x NC0001 M10 HEX RUBBER CAP

TOOLS REQUIRED

- T45 TORX TOOL.
- RATCHET AND 17MM SOCKET
 - 5MM ALLEN KEY
- SMALL BLADE SCREWDRIVER
 - LOCTITE

MAXIMUM TORQUE SETTINGS

- M4 BOLT = 8Nm
- M5 BOLT = 12Nm
- M6 BOLT = 15Nm
- M8 BOLT = 20Nm
- M10 BOLT = 40Nm

R&G



Picture 1



Picture 2



Picture 3



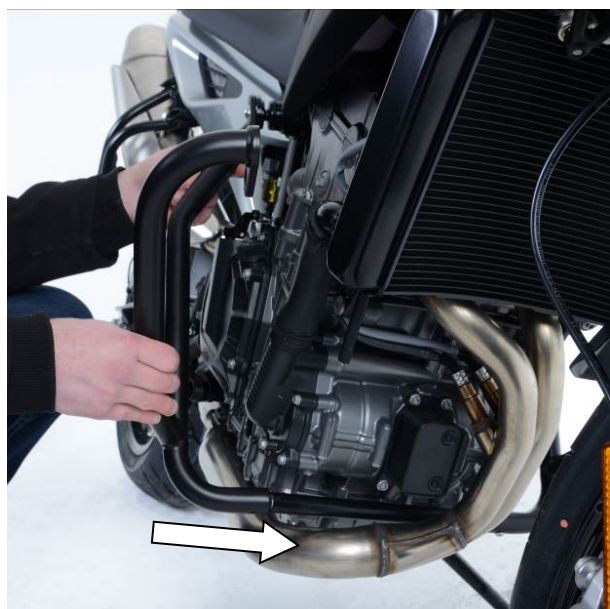
Picture 4



Picture 5



Picture 6



Picture 7



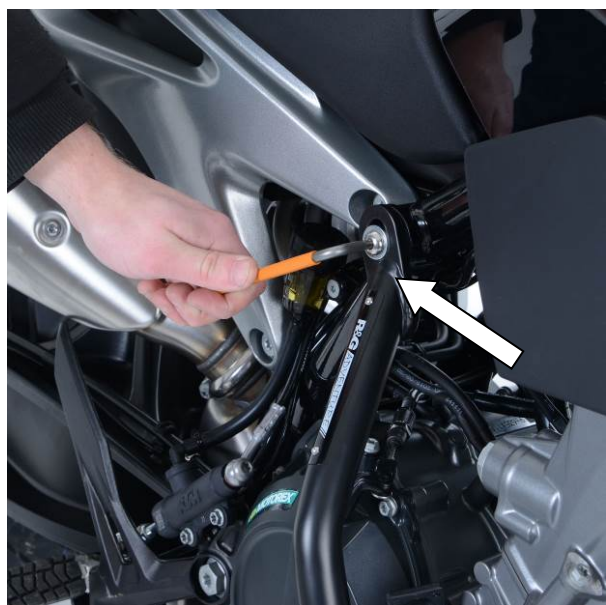
Picture 8



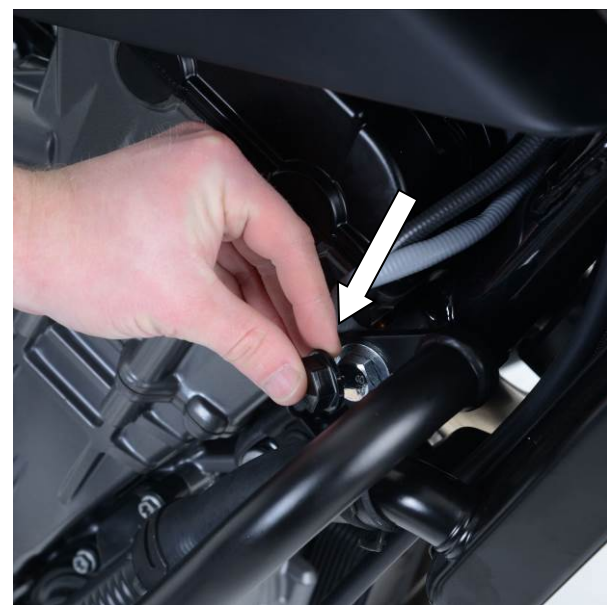
Picture 9



Picture 10



Picture 11



Picture 12



FITTING INSTRUCTIONS

- To begin, loosely assemble both sides of the crash bar expander assembly on the rear mount of each crash bar as seen in assembly diagrams 1 and 2 (pages 2 and 3).
- Stretch 2 'O' Rings over the expanders and make sure they sit snugly in the grooves of the expander.
- Ensure that the expander nut (Item 5) is fit securely into the recess of the expander (item 4) with the tapered face facing into the expander. Gently tighten so the expander nut grips the insert, without enlarging the insert, this will ensure that later, when turning the bolt, it will tighten correctly.
- Starting from the LHS of the bike, remove the cover cap from the frame below the seat, this should pop out with a small amount of pressure from a small bladed screwdriver as seen in picture 1.
- Remove the upper engine support Torx bolt from the frame using a T45 Torx head tool as shown in picture 2. **DO NOT REMOVE BOTH SIDES AT THE SAME TIME.**
- Offer up the LHS bar assembly to the bike as shown in picture 3, ensuring the expander sits neatly in the frame tube as seen in picture 4. Be careful to make sure the lower bar does not contact the exhaust when fitting.
- While holding the crash bar assembly in position, pass one M10 Hex bolt (item 9) through the M10 Washer (item 10), crash bar (item 1) and S1160 Spacer (item 6) with the larger end facing outwards from the bike, and into the frame as shown in picture 5.
- Loosely fix the bolt to hold the bar in place but do not fully tighten this yet as adjustments can be made to the bar position later.
- Connect the connector bar (item 3) to this assembly by passing one end between the exhaust and engine and into the exposed end of the LHS crash bar. Rotate the bar and secure in place using the 20mm button head (item 11) bolt as shown in picture 6. It is recommended that you use a small amount of Loctite on the threads to secure the bolt.
- Repeat the initial steps for the RHS crash bar. When offering up the crash bar assembly make sure to pass the end of the lower bar over the connector bar of the bike as seen in picture 7. And secure the expander and top mounts in the same way as before using the remaining fitting items as in picture 8.
- Insert the final M6 X 20mm button head bolt (item 11) to through the RHS engine bar and into the central connector bar (item 3) using a small amount of Loctite as before.
- Adjust the adventure bars on the slotted mounts to give the maximum clearance available between the engine and exhaust, as shown in picture 9. Do this for both sides and inspect thoroughly before proceeding.
- Tighten both upper bolts to the correct torque as shown in picture 10 using your 17mm socket.
- Ensuring the expander is fully inserted into the frame tube, carefully tighten the bolt to the point which the insert cannot move, as shown in picture 11. The frame insert will expand internally with the O-rings gripping the inside of the frame boss. **DO NOT OVERTIGHTEN AS THIS MAY CAUSE DAMAGE TO PAINT INSIDE THE FRAME TUBE.**
- Fully tighten the lower connector bar bolts with the specified torque using a 4mm allen key.
- Place the M10 hex rubber cap (item 13) over the head of the bolt as shown in picture 12

R&G



- At this point double check that the connector bar is secure and cannot contact the exhaust or engine and all bolts are correctly torqued. Ride the bike and re-check the position of the bars and bolt tightness, adjusting if necessary.
- Check all bolts regularly, e.g. when washing the bike, to ensure they remain tight and the adventure bars remain in position.

ISSUE 1 18/02/2019 (DM)

CONSUMER NOTICE

The catalogue description and any exhibition of samples are only broad indications of the Products and R&G may make design changes which do not diminish their performance or visual appeal and supplying them in such state shall conform to the order. The Buyer acknowledges no representation or warranty (other than as to title) has been given or will apply to the Products other than those in R&G's order or confirmation and the Buyer confirms it has chosen the Products as being of merchantable quality and suitable for its particular purposes. Where R&G fits the Products or undertakes other services it shall exercise reasonable skill and care and rectify any fault free of charge unless the workmanship has been disturbed. The Buyer is responsible for ensuring that the warranty on the motorcycle is not affected by the fitting of the Products. On return of any defective Products R&G shall at its option either supply a replacement or refund the purchase money but shall not be liable if the Products have been modified or used or maintained otherwise than in accordance with R&G's or manufacturer's instructions and good engineering practice or if the defect arises from accident or neglect. Other than identified above and subject to R&G not limiting its liability for causing death and personal injury, it shall not be liable for indirect or consequential loss and otherwise its liability shall be limited to the amounts paid by the Buyer for the Products or the fitting or service concerned. These terms do not affect the Buyer's statutory rights.

R&G RETURNS POLICY (NON-FAULTY GOODS)

Returns must be pre-authorized (if not pre-authorized the return will be rejected). Goods may only be returned direct to us if they were purchased direct from us (customer must prove if necessary). Otherwise to be returned to original vendor. Goods must be in re-sellable condition, in the opinion of R&G. All returns are subject to a 25% restocking and handling fee (25% of the gross value exc. P&P – at the prevailing price at time of purchase). The customer must pay any and all carriage charges. No returns of discontinued products, unless within 14 days of purchase. This policy does not affect your statutory rights and does not refer to faulty goods.

R&G

Unit 1, Shelley's Lane, East Worldham, Alton, Hampshire, GU34 3AQ

Tel: +44 (0)1420 89007 Fax: +44 (0)1420 87301 www.rg-racing.com Email: info@rg-racing.com