



## **FITTING INSTRUCTIONS FOR AR0001SI ADVENTURE LUGGAGE RACK KTM 790 ADVENTURE 2019**



Picture A



Picture B

**THIS KIT CONTAINS THE ITEMS PICTURED AND LABELLED OVER PAGE.**

SOME PARTS MAY BE SHOWN FOR CLARITY OF INSTRUCTIONS ONLY.

DO NOT PROCEED UNTIL YOU ARE SURE ALL PARTS ARE PRESENT.

**PLEASE READ ALL INSTRUCTIONS BEFORE PROCEEDING.**

PLEASE NOTE THAT THE WAY THE KIT IS PACKED DOES NOT NECESSARILY REPRESENT THE WAY OF  
MOUNTING TO THE BIKE.

IN THE EVENT OF RUBBER WASHERS BEING USED TO HOLD COMPONENTS ONTO BOLTS,  
THESE RUBBER WASHERS CAN BE THROWN AWAY.

**DIGITAL COPIES OF THESE INSTRUCTIONS ARE AVAILABLE FROM:**

[WWW.RG-RACING.COM](http://WWW.RG-RACING.COM)

R&G Racing

Unit 1, Shelleys Lane, East Worldham, Alton, Hampshire GU34 3AQ.

Tel: +44 (0)1420 89007 Fax +44 (0)1420 87301 [www.rg-racing.com](http://www.rg-racing.com) Email: [info@rg-racing.com](mailto:info@rg-racing.com)

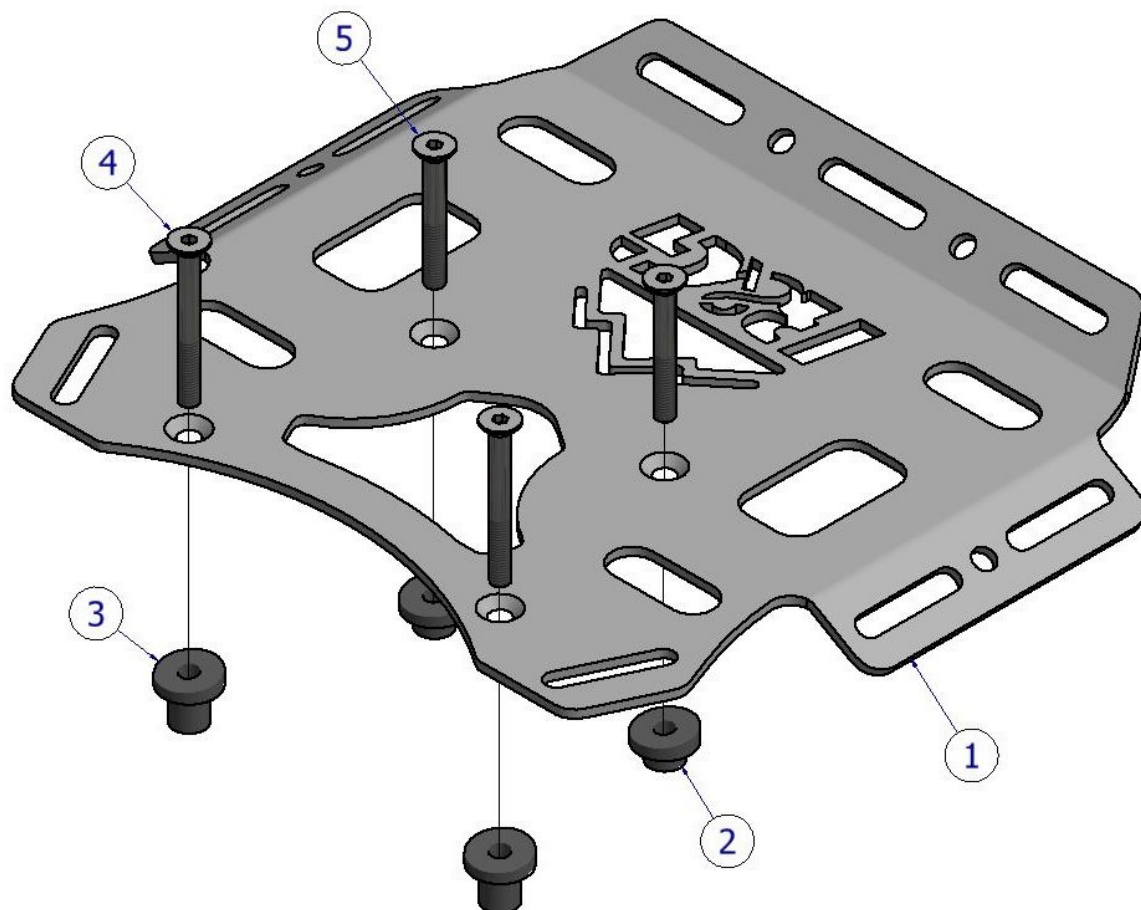


<b><u>TOOLS REQUIRED</u></b>	<b><u>GENERAL TORQUE SETTINGS</u></b>
<ul style="list-style-type: none"> <li>T45 Torx Tool</li> <li>5mm A/F Allen Tool</li> <li>Torque Wrench</li> </ul>	M4 BOLT = 8Nm M5 BOLT = 12Nm M6 BOLT = 15Nm M8 BOLT = 20Nm M10 BOLT = 40Nm M12 BOLT = 40Nm

### **LEGEND**

<b>ITEM No.</b>	<b>DESCRIPTION</b>	<b>QTY</b>
ITEM 1	SMW0151 ADVENTURE RACK—BRUSHED	1
ITEM 2	S1196 SHORT ANGLED TOP-HAT SPACER	2
ITEM 3	S1197 TALL ANGLED TOP-HAT SPACER	2
ITEM 4	M8 x 1.25 x 70.00mm LONG COUNTERSINK BOLT	2
ITEM 5	M8 x 1.25 x 60.00 LONG COUNTERSINK BOLT	2

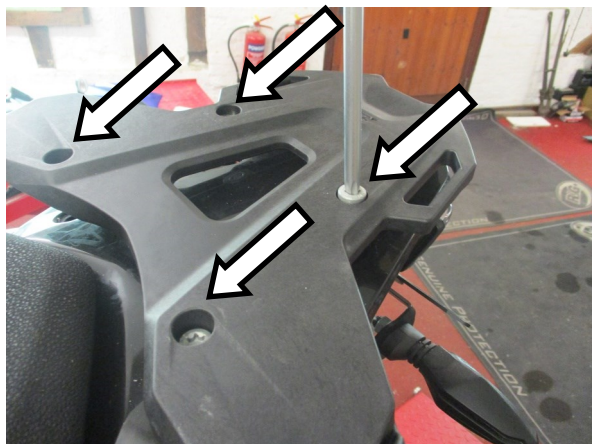
### **EXPLODED ASSEMBLY DIAGRAM**



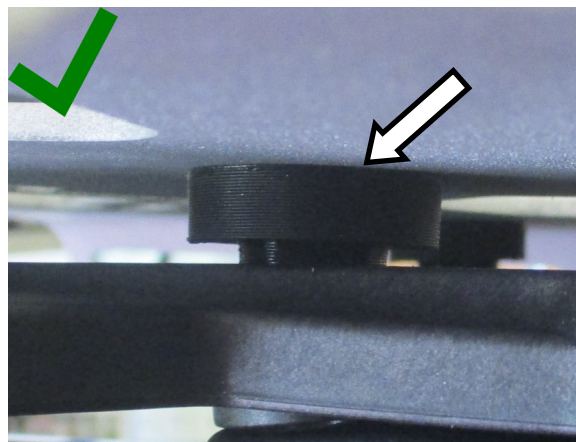
R&G Racing

Unit 1, Shelleys Lane, East Worldham, Alton, Hampshire GU34 3AQ.

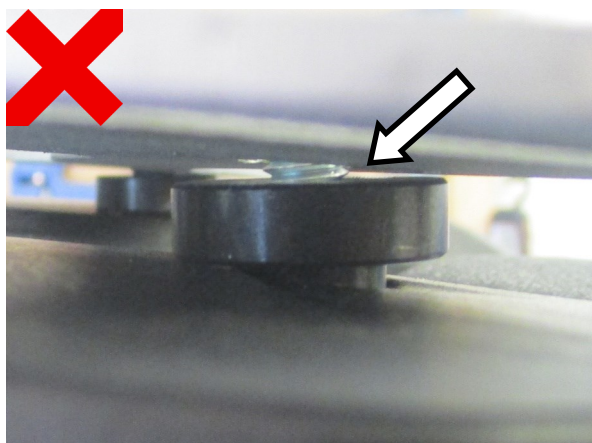
Tel: +44 (0)1420 89007 Fax +44 (0)1420 87301 [www.rg-racing.com](http://www.rg-racing.com) Email: [info@rg-racing.com](mailto:info@rg-racing.com)



Picture 1



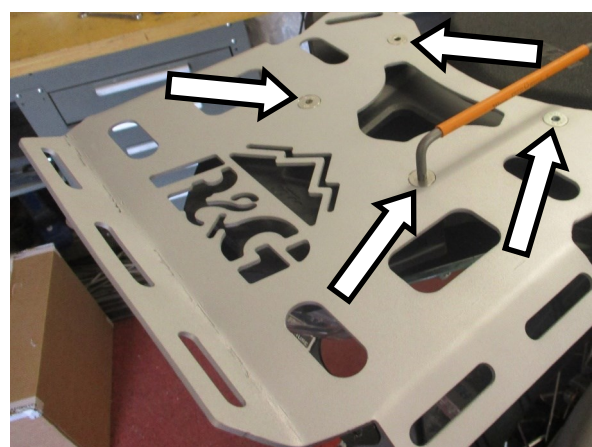
Picture 2



Picture 3



Picture 4



Picture 5



Picture 6

R&G Racing

Unit 1, Shelleys Lane, East Worldham, Alton, Hampshire GU34 3AQ.

Tel: +44 (0)1420 89007 Fax +44 (0)1420 87301 [www.rg-racing.com](http://www.rg-racing.com) Email: [info@rg-racing.com](mailto:info@rg-racing.com)



## **FITTING INSTRUCTIONS**

- Remove the 4x T45 bolts shown in picture 1, ensuring that the OEM rack and both grab rails are supported to prevent them from dropping, and keep them in place.
- Referring to the diagram on page 2 as well as pictures 2 & 3, place the 2 longer top-hat spacers (item 3) in the 2 frontmost (closest to seat) mounting wells of the OEM rack, then place the 2 shorter top-hat spacers (item 2) in the rearmost (closest to end of bike) wells.
- Referring to pictures 2 and 3, rotate the spacers so that the R&G Adventure Rack (item 1) sits flat on top of all 4 spacers and parallel to the OEM rack surface, as shown in picture 4.
- Line up the countersunk R&G rack mounting holes with those of the spacers, then insert the 2 M8 x 70mm countersink bolts (item 4) into the frontmost holes as shown in the diagram on page 2. Secure using a 5mm Allen key as shown in picture 5, but do not fully tighten.
- Insert the 2 M8 x 60mm countersink bolts (item 5) into the rearmost holes and secure with a 5mm Allen key, then fully tighten all bolts and torque to 20Nm.
- **Please note - KTM recommend not to exceed a 5kg load capacity on the OEM rack.**

ISSUE 1 - 23/08/2019 (FB)

### CONSUMER NOTICE

The catalogue description and any exhibition of samples are only broad indications of the Products and R&G may make design changes which do not diminish their performance or visual appeal and supplying them in such state shall conform to the order. The Buyer acknowledges no representation or warranty (other than as to title) has been given or will apply to the Products other than those in R&G's order or confirmation and the Buyer confirms it has chosen the Products as being of merchantable quality and suitable for its particular purposes. Where R&G fits the Products or undertakes other services it shall exercise reasonable skill and care and rectify any fault free of charge unless the workmanship has been disturbed. The Buyer is responsible for ensuring that the warranty on the motorcycle is not affected by the fitting of the Products. On return of any defective Products R&G shall at its option either supply a replacement or refund the purchase money but shall not be liable if the Products have been modified or used or maintained otherwise than in accordance with R&G's or manufacturer's instructions and good engineering practice or if the defect arises from accident or neglect. Other than identified above and subject to R&G not limiting its liability for causing death and personal injury, it shall not be liable for indirect or consequential loss and otherwise its liability shall be limited to the amounts paid by the Buyer for the Products or the fitting or service concerned. These terms do not affect the Buyer's statutory rights.

### R&G RETURNS POLICY (NON-FAULTY GOODS)

Returns must be pre-authorised (if not pre-authorised the return will be rejected). Goods may only be returned direct to us if they were purchased direct from us (customer must prove if necessary). Otherwise to be returned to original vendor. Goods must be in re-sellable condition, in the opinion of R&G. All returns are subject to a 25% restocking and handling fee (25% of the gross value exc. P&P – at the prevailing price at time of purchase). The customer must pay any and all carriage charges. No returns of discontinued products, unless within 14 days of purchase. This policy does not affect your statutory rights and does not refer to faulty goods.

R&G Racing

Unit 1, Shelleys Lane, East Worldham, Alton, Hampshire GU34 3AQ.

Tel: +44 (0)1420 89007 Fax +44 (0)1420 87301 [www.rg-racing.com](http://www.rg-racing.com) Email: [info@rg-racing.com](mailto:info@rg-racing.com)