



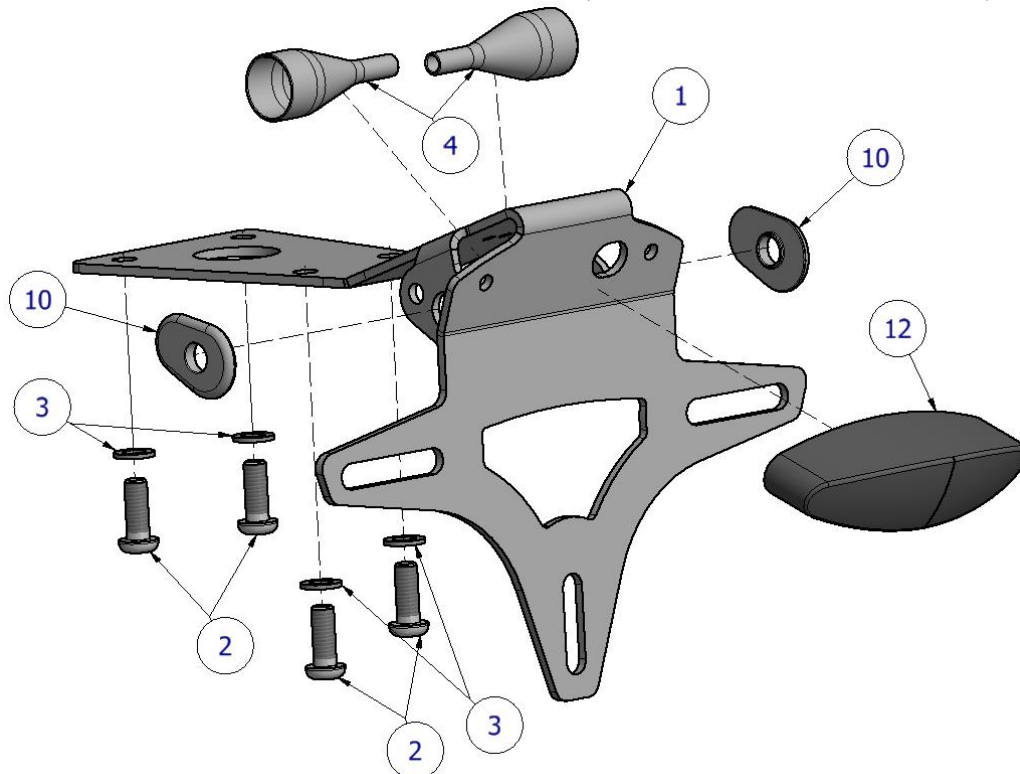
FITTING INSTRUCTIONS FOR LP0248BK(A) LICENCE PLATE BRACKET
KTM DUKE 790 '18-



THIS KIT CONTAINS THE ITEMS PICTURED AND LABELLED BELOW.
DO NOT PROCEED UNTIL YOU ARE SURE ALL PARTS ARE PRESENT.

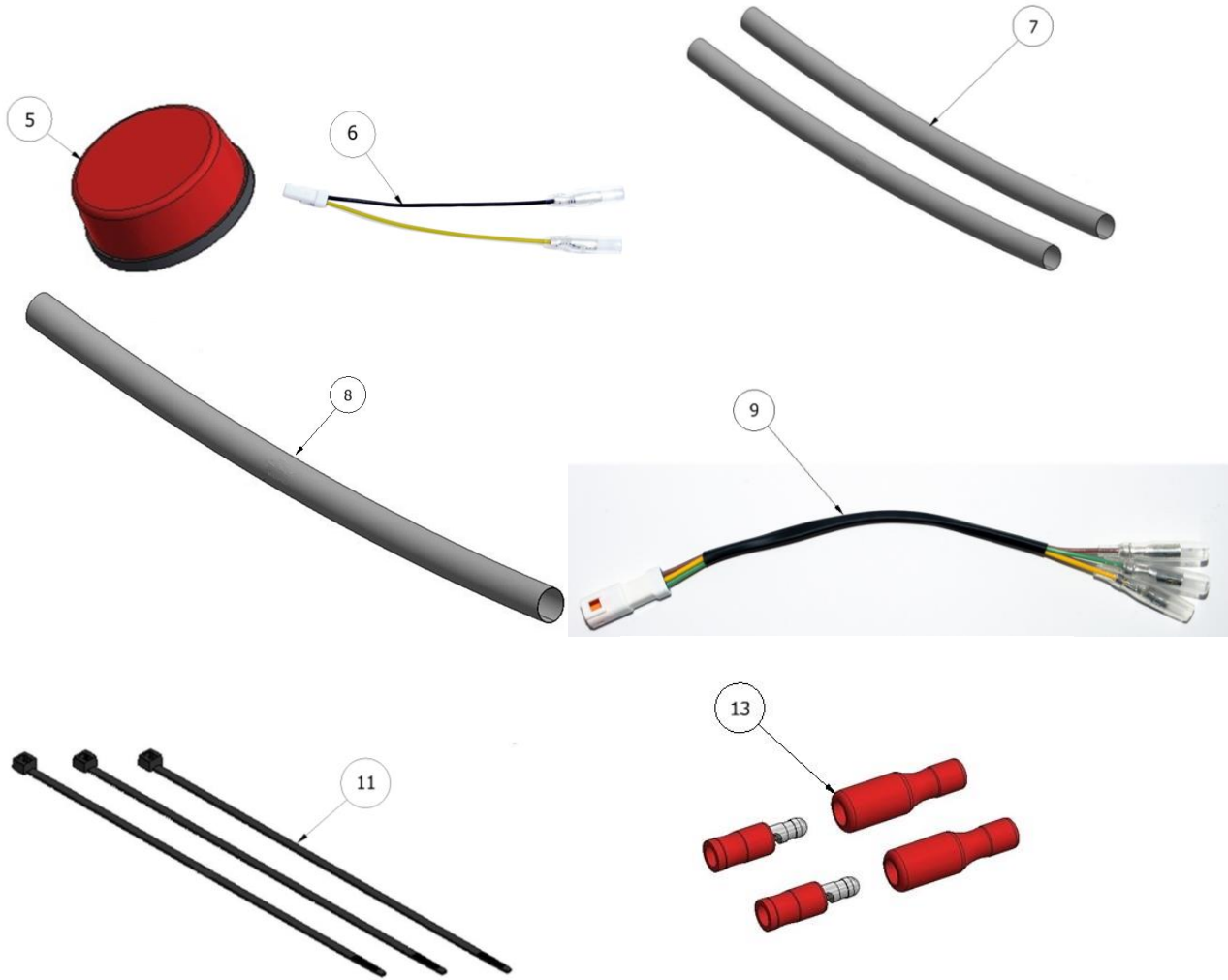
Please note that the way the kit is packed does not necessarily represent the way of mounting to the bike.

THE PARTS SHOWN MAY BE REPRESENTATIVE ONLY (FOR CLARITY OF INSTRUCTIONS ONLY).



R&G

Unit 1, Shelley's Lane, East Worldham, Alton, Hampshire, GU34 3AQ
Tel: +44 (0)1420 89007 Fax: +44 (0)1420 87301 www.rg-racing.com Email: info@rg-racing.com



LEGEND

- ITEM 1 = LICENCE PLATE BRACKET (TB0248) (x1).
- ITEM 2 = M6 x 15mm LONG BUTTON HEAD BOLTS (x4).
- ITEM 3 = M6 WASHERS (x4).
- ITEM 4 = IWC0002 INDICATOR WIRING COVERS (x2).
- ITEM 5 = REFLECTOR (x1).
- ITEM 6 = LICENCE PLATE ILLUMINATOR CONNECTOR (CON0014) (x2).
- ITEM 7 = 150MM LENGTH OF HEATSHRINK (x2).
- ITEM 8 = 200MM LENGTH OF LARGE HEATSHRINK (x1).
- ITEM 9 = LICENCE PLATE ILLUMINATOR CONNECTOR (CON0043) (x1).
- ITEM 10 = I0040 MINI INDICATOR ADAPTOR (x2).
- ITEM 11 = SMALL CABLE TIES (x3).
- ITEM 12 = TAIL LIGHT (LA0007) (x1).
- ITEM 13 = CON0004 BULLET CONNECTORS (x2).



TOOLS REQUIRED

- T25, T30 torx driver.
- 12, 13mm spanner.

MAXIMUM TORQUE SETTINGS

- M5 Bolt = 12 Nm
- M6 Bolt = 15 Nm



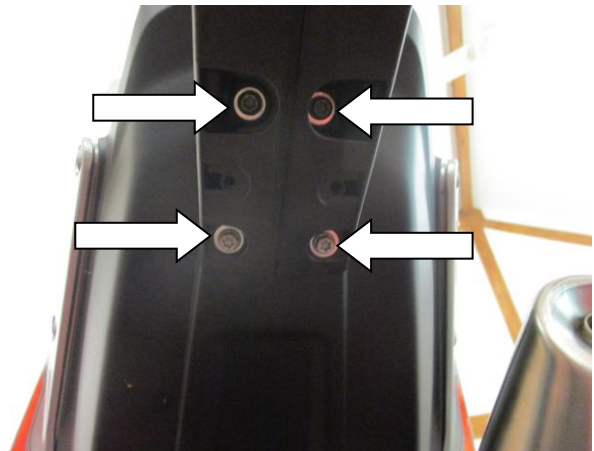
Picture 1



Picture 2



Picture 3



Picture 4



Picture 5



Picture 6



Picture 7



Picture 8



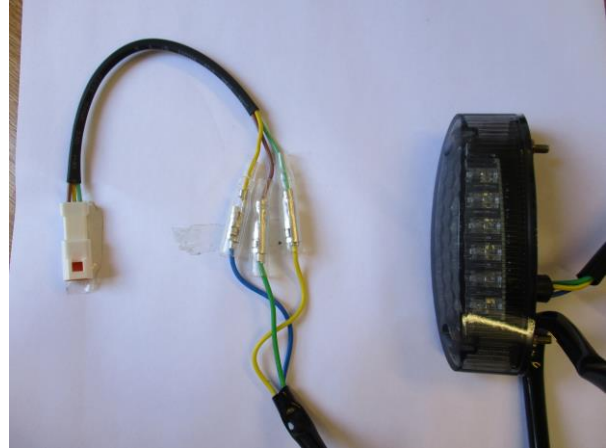
Picture 9



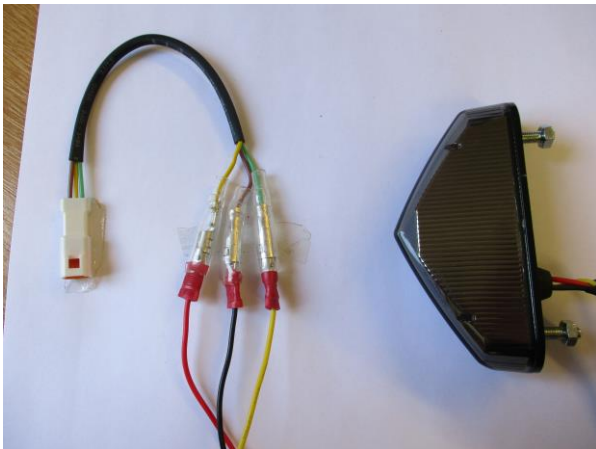
Picture 10



Picture 11



Picture 12



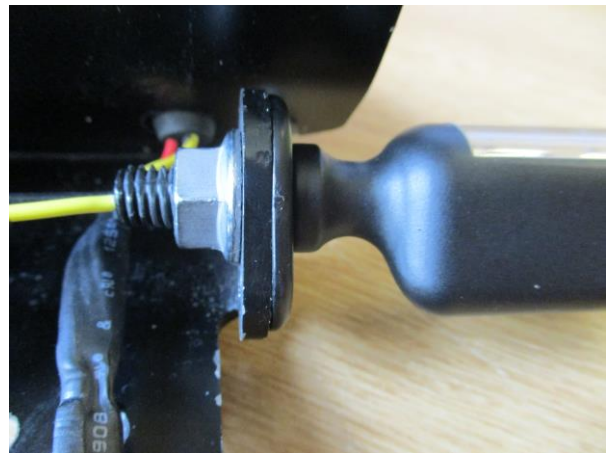
Picture 13



Picture 14



Picture 15



Picture 16



Picture 17



Picture 18



Picture 19



Picture 20



Picture 21



Picture 22



FITTING INSTRUCTIONS

- To fit the R&G tail tidy, remove the pillion seat using the motorcycle key as shown in picture 1 and 2.
- Unplug the connector shown in picture 3.
- Remove the 4 torx bolts arrowed in picture 4.
- Gently pull the OEM tail away from the bike removing the wiring sub-harness and rubber plug as shown in pictures 5 and 6.
- Remove the 3 bolts shown in picture 8.
- Split the OEM tail in half by gently pulling the two sides away from each other as shown in picture 9.
- Disconnect the OEM tail light and OEM indicators from the sub-harness shown in picture 9 making a note or marking which sub-harness corresponds to the left and right indicators. Remove the rubber plug from the sub-harness.
- Fit the supplied R&G tail light (item 12) to the R&G tail bracket (item 1) using the included bolts, washers and nuts as shown in picture 11. If the tail light shown in picture 12 is supplied ensure the larger side of the light is facing down so that the number plate is illuminated correctly.

If fitting OEM indicators (item 6-CON0014 not required)

- Remove the OEM indicators from the OEM tail by removing the nut on the threaded boss on the back and threading the indicator and wiring through the hole.
- Mount the indicators to the corresponding side on the R&G tail bracket (item 1) in the same way they were removed as shown in picture 14.
- Protect the wiring using an indicator wiring cover (item 4) as shown in picture 17.
- Pass all three wires through the large heatshrink (item 8) and secure using the small cable ties (item 11) and the cable tie holes as shown in picture 18. Ensure the cable tie heads sit on the wiring side of the tail bracket.
- Insert the OEM rubber plug into the tail bracket as shown in picture 19.
- Mount the tail bracket assembly to the bike using the 4 M6 bolts (item 2) and M6 washers (item 3) as shown in picture 20.
- Pass the wiring through the rubber plug as shown in picture 21.
- If supplied with the tail light shown in picture 13 fit male bullet connectors (item 13) to each of the wires.
- Following the wiring scheme below, connect CON0043 (item 9) to the R&G tail light.

	CON0043 (item 9)	Picture 12 Tail Light	Picture 13 Tail Light
Wiring Colour	YELLOW	BLUE	RED
	GREEN	YELLOW	YELLOW
	BROWN	GREEN	BLACK

- Connect the OEM indicator connectors to their corresponding connectors on the sub-harness removed earlier.
- Connect the tail light connector (item 9-CON0043) to the OEM sub-harness.
- Connect the OEM sub-harness to the motorcycle loom with the connector that was removed in picture 3.
- Test the indicators and tail light for correct function and flash rate.
- If lights fail to illuminate swap the connectors.
- Re-fit the pillion seat.

If fitting R&G mini indicators-Not included (Product codes: RG370=Bulb, RG371=LED, RG372=Aero LED), RGR0003 Resistor (sold separately) is required to achieve correct flash rate.

- Pass one length of heatshrink (item 7) over the wiring on both mini indicators as shown in picture 15.
- Place a mini indicator adaptor (item 10) over each indicator ensuring the flat surface sits against the indicator.



- Pass the mini indicators into the R&G tail bracket (item 1) and secure using the M8 nut included with the indicators as shown in picture 16.
- Protect the wiring using an indicator wiring cover (item 4) as shown in picture 17.
- Pass all three wires through the large heatshrink (item 8) and secure using the small cable ties (item 11) and the cable tie holes as shown in picture 18. Ensure the cable tie heads sit on the wiring side of the tail bracket.
- Insert the OEM rubber plug into the tail bracket as shown in picture 19.
- Mount the tail bracket assembly to the bike using the 4 M6 bolts (item 2) and M6 washers (item 3) as shown in picture 20.
- Pass the wiring through the rubber plug as shown in picture 21.
- If supplied with the tail light shown in picture 13 fit male bullet connectors (item 13) to each of the wires.
- Following the wiring scheme below, connect CON0043 (item 9) to the R&G tail light.

	CON0043	Picture 12 Tail Light	Picture 13 Tail Light
Wiring Colour	YELLOW	BLUE	RED
	GREEN	YELLOW	YELLOW
	BROWN	GREEN	BLACK

- Connect the tail light connector (item 9-CON0043) to the OEM sub-harness.
- Connect the mini indicator bullet connectors to the RGR0003 resistor (sold separately) connectors and then connect the RGR0003 resistor connectors to the CON0014 (item 6) bullet connectors.
- Connect the indicator wiring assembly to the correct side of the motorcycle sub-loom removed earlier.
- Connect the OEM sub-harness to the motorcycle loom with the connector that was removed in picture 3.
- Test the indicators and tail light for correct function and flash rate.
- If lights fail to illuminate swap the connectors.
- Re-fit the pillion seat.

ISSUE 1 27/04/2018 (HB)
 ISSUE 2 12/06/2018 (HB)

Digital copies of these instructions are available to download from www.rg-racing.com

CONSUMER NOTICE

The catalogue description and any exhibition of samples are only broad indications of the Products and R&G may make design changes which do not diminish their performance or visual appeal and supplying them in such state shall conform to the order. The Buyer acknowledges no representation or warranty (other than as to title) has been given or will apply to the Products other than those in R&G's order or confirmation and the Buyer confirms it has chosen the Products as being of merchantable quality and suitable for its particular purposes. Where R&G fits the Products or undertakes other services it shall exercise reasonable skill and care and rectify any fault free of charge unless the workmanship has been disturbed. The Buyer is responsible for ensuring that the warranty on the motorcycle is not affected by the fitting of the Products. On return of any defective Products R&G shall at its option either supply a replacement or refund the purchase money but shall not be liable if the Products have been modified or used or maintained otherwise than in accordance with R&G's or manufacturer's instructions and good engineering practice or if the defect arises from accident or neglect. Other than identified above and subject to R&G not limiting its liability for causing death and personal injury, it shall not be liable for indirect or consequential loss and otherwise its liability shall be limited to the amounts paid by the Buyer for the Products or the fitting or service concerned. These terms do not affect the Buyer's statutory rights.

R&G RETURNS POLICY (NON-FAULTY GOODS)

Returns must be pre-authorised (if not pre-authorised the return will be rejected). Goods may only be returned direct to us if they were purchased direct from us (customer must prove if necessary). Otherwise to be returned to original vendor. Goods must be in re-sellable condition, in the opinion of R&G. All returns are subject to a 25% restocking and handling fee (25% of the gross value exc. P&P – at the prevailing price at time of purchase). The customer must pay any and all carriage charges. No returns of discontinued products, unless within 14 days of purchase. This policy does not affect your statutory rights and does not refer to faulty goods.