



**FITTING INSTRUCTIONS FOR LP0347 LICENCE PLATE BRACKET**



**This kit contains the items pictured and labelled over page.  
Some parts may be shown for clarity of instructions only.  
Do not proceed until you are sure all parts are present.  
Please read all instructions before proceeding.**

**IF IN ANY DOUBT WHEN FITTING OUR PRODUCTS, CONSULT ONE OF OUR DEALERS  
OR HAVE FITTED BY A QUALIFIED TECHNICIAN.**

Please note that the way the kit is packed does not necessarily represent the way of mounting to the bike.

In the event of rubber washers being used to hold components onto bolts, these rubber washers can be thrown away.

**DIGITAL COPIES OF THESE INSTRUCTIONS ARE AVAILABLE FROM**

**[WWW.RG-RACING.COM](http://WWW.RG-RACING.COM)**

R&G

Unit 1, Shelley's Lane, East Worldham, Alton, Hampshire, GU34 3AQ  
Tel: +44 (0)1420 89007 Fax: +44 (0)1420 87301 [www.rg-racing.com](http://www.rg-racing.com) Email: [info@rg-racing.com](mailto:info@rg-racing.com)



<b><u>TOOLS REQUIRED</u></b>	<b><u>GENERAL TORQUE SETTINGS</u></b>
<ul style="list-style-type: none"> <li>• Set of metric Hex keys to include 3mm, 4mm and 5mm.               <ul style="list-style-type: none"> <li>• T30 Torx head tool</li> </ul> </li> <li>• Set of metric sockets and wrench. To include 6, 8 &amp; 10mm.               <ul style="list-style-type: none"> <li>• 8mm &amp; 10mm spanners.</li> <li>• Phillips screwdriver.</li> </ul> </li> </ul>	M4 BOLT = 8Nm M5 BOLT = 12Nm M6 BOLT = 15Nm M8 BOLT = 20Nm M10 BOLT = 40Nm M12 BOLT = 40Nm

### **LEGEND**

<b>ITEM No.</b>	<b>DESCRIPTION</b>	<b>QTY</b>
1	TB0347 PART 1 MAIN MOUNTING BRACKET	1
2	TB0347 PART 2 LICENCE PLATE BRACKET	1
3	LA0002 LICENSE PLATE ILLUMINATOR ASSEMBLY	1
4	CON0013 LICENSE PLATE ILLUMINATOR CONNECTOR	1
5	M5x0.80x16mm COUNTERSUNK BOLT	4
6	M5x10mm Ø FLAT WASHER	4
7	M6x12mm Ø FLAT WASHER	4
8	M5x0.8 NYLOC NUT	4
9	IWC0002 INDICATOR WIRING COVER	2
10	666-896 200mm LENGTH OF HEAT-SHRINK	4
11	CT75 2.5mm WIDE x 75mm LONG CABLE TIES	5
12	CLIP1 SELF ADHESIVE CLIPS	2
13	REFL3 REFLECTOR	1

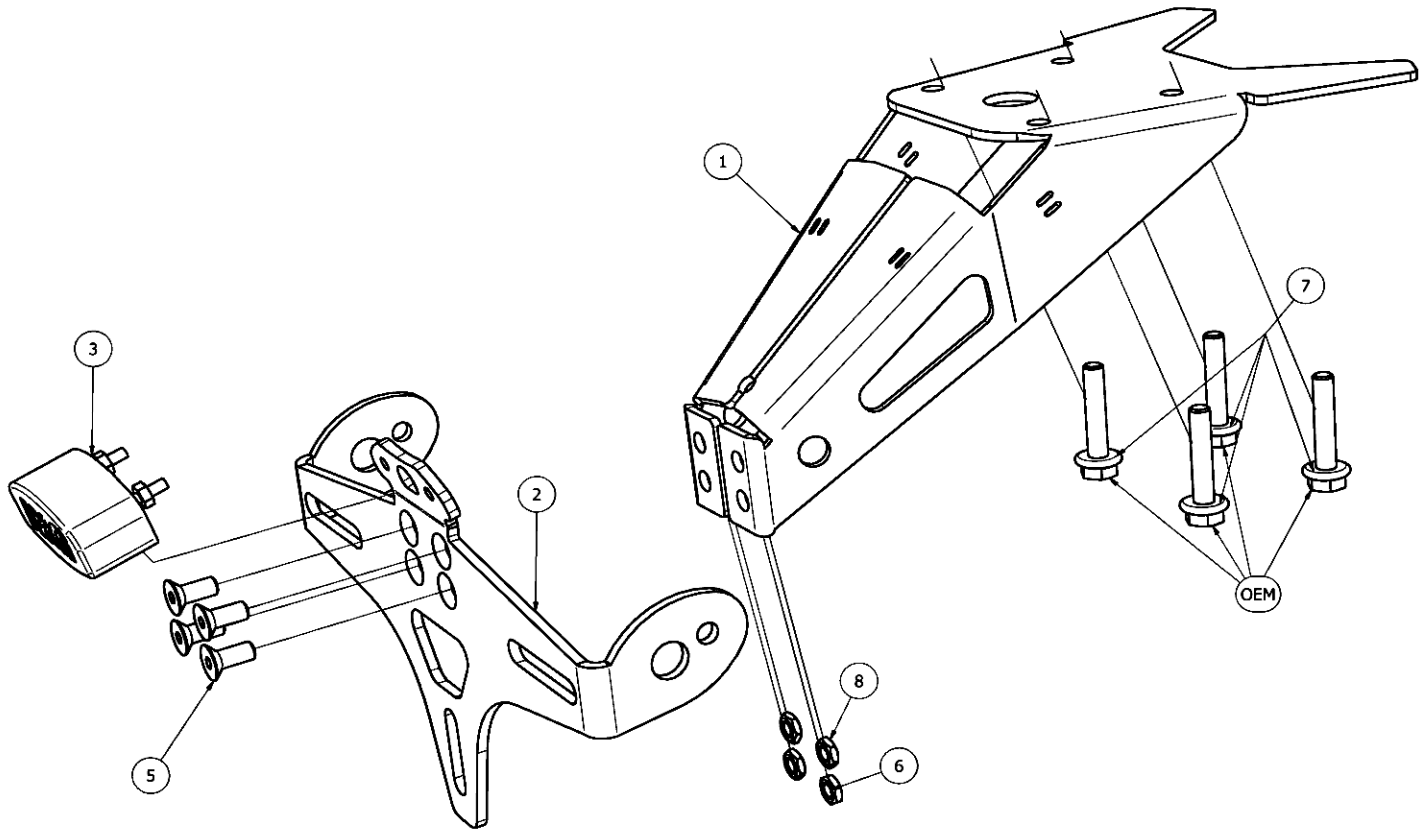
R&G

Unit 1, Shelley's Lane, East Worldham, Alton, Hampshire, GU34 3AQ

Tel: +44 (0)1420 89007 Fax: +44 (0)1420 87301 [www.rg-racing.com](http://www.rg-racing.com) Email: [info@rg-racing.com](mailto:info@rg-racing.com)

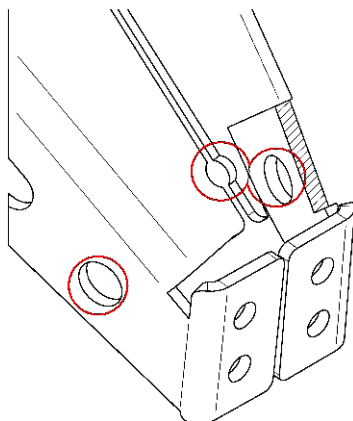


**ASSEMBLY DIAGRAM**



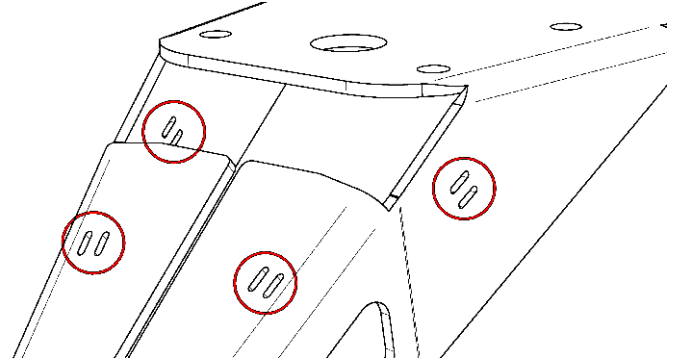
**FITTING PICTURES**

**Picture 1**



**Picture 2**



**Picture 3****Picture 4**

### **FITTING INSTRUCTIONS**

Before fitting the R&G tail tidy you will need to remove some OEM parts. Below is a suggested list of parts to be removed.

- Rider seat unit
- Seat lock mechanism
- Rear seat
- Number plate bracket
- Indicators
- Indicator and number plate light wiring

### **Tail Tidy Assembly**

*Before assembling this product, ensure all the components within the box are correct by comparing the legend and diagrams.*

#### **Removing The OEM Tail Bracket**

1. Remove the rider seat unit via the lock between the rider and passenger seat.
2. Gently pry away the plastic panel with the seat lock mechanism and move it to one side.
3. Using an allen key remove the single bolt behind the lock mechanism that holds the rear seat in place
4. Remove the two bolts holding the rear seat strap in position or carefully manoeuvre the rear seat unit through the strap then remove the rear seat unit.
5. Disconnect the rear indicator and number plate light connectors located under the pillion seat inside a silicone shroud.

#### **Disassembly Of The OEM Tail Unit**

1. Remove all visible bolts from the tail unit and remove the plastic backing plate.
2. Once removed the tail units frame should be visible, remove the nut holding the indicators in place along with any cable ties.
3. Pull the indicator cables through the frame.
4. Re-assembly the tail unit without indicators and store.

R&G

Unit 1, Shelley's Lane, East Worldham, Alton, Hampshire, GU34 3AQ

Tel: +44 (0)1420 89007 Fax: +44 (0)1420 87301 [www.rg-racing.com](http://www.rg-racing.com) Email: [info@rg-racing.com](mailto:info@rg-racing.com)



### **Assembly Of The R&G Tail Tidy**

1. Apply the supplied heat shrink (**Item 10**) or insulating tape to the indicator cables and supplied number plate illuminator (**Item 3**) to cover any exposed wires, then attach the CON0013 (**Item 4**) to the licence plate illuminator bullet connectors.
2. Using the 4X M5 bolts, nuts & washers (**Items 5, 6 & 8**) assemble the licence plate bracket (**Item 2**) with the main mounting bracket (**Item 1**).
3. Using the supplied heat shrink or insulating tape, apply a small amount to the end of the indicator wiring cover to stop it from moving. (**Pictures 2 & 3**)
4. Push the OEM indicator cables through the indicator brackets on the licence plate bracket (**Item 2**), then through the holes in the main mounting bracket (**Item 2**).
5. Slide over the OEM nuts and washers, followed by the indicator wiring cover (**Item 9**).

**Please note:** The wiring covers may need to be cut at the tapered end in order to fit the connectors through.

6. Tighten down the indicator nuts.
7. Thread the licence plate illuminator (**Item 3**) cables through the licence plate bracket & the hole in **Item 1** shown in **Picture 1** then add the supplied washers and nuts to the threaded bars on the back of **Item 3**.
8. Thread the supplied cable ties (**Item 11**) through the slots on **Item 1** shown in **Picture 4**.

**Please note:** Do not close the cable ties until the tail tidy has been attached and connected to the OEM wiring.

### **Attaching The R&G Tail Tidy**

1. Apply the 4X M6 (**Item 7**) washers to the OEM M6 flanged hex head bolts.
2. With the 4X OEM M6 bolts to hand, offer up the assembly to the motorcycles undertray.
3. Thread the indicator and licence plate illuminator cables through the wiring hole in the undertray.
4. Thread in by hand the bolts one by one until all four are tight enough to keep the assembly in position.
5. At this point attach the indicator and licence plate illuminator connectors to the OEM wiring harness.
6. Check the operation of the indicators and licence plate lights – and that the LHS and RHS indicators are in the correct orientation.
7. Find a suitable position to attach the cables/inline resistors to the underside of the tail bracket.
8. Tighten down all four bolts evenly

**IMPORTANT: IF FITTING A FULL-SIZE LICENCE PLATE AND PLACING IT LOW DOWN ON THE LICENCE PLATE MOUNT, THERE IS A POTENTIAL CHANCE THE LICENCE PLATE COULD HIT THE BACK WHEEL UNDER HEAVY LOAD AND OVER LARGE BUMPS IN THE ROAD. IT IS YOUR RESPONSIBILITY TO CHECK FOR THIS POSSIBILITY AND TAKE AVOIDING ACTION. FAILURE TO CHECK THIS COULD RESULT IN SERIOUS INJURY.**

ISSUE 1 05/10/2022 (TB)

R&G

Unit 1, Shelley's Lane, East Worldham, Alton, Hampshire, GU34 3AQ

Tel: +44 (0)1420 89007 Fax: +44 (0)1420 87301 [www.rg-racing.com](http://www.rg-racing.com) Email: [info@rg-racing.com](mailto:info@rg-racing.com)



#### **CONSUMER NOTICE**

The catalogue description and any exhibition of samples are only broad indications of the Products and R&G may make design changes which do not diminish their performance or visual appeal and supplying them in such state shall conform to the order. The Buyer acknowledges no representation or warranty (other than as to title) has been given or will apply to the Products other than those in R&G's order or confirmation and the Buyer confirms it has chosen the Products as being of merchantable quality and suitable for its particular purposes. Where R&G fits the Products or undertakes other services it shall exercise reasonable skill and care and rectify any fault free of charge unless the workmanship has been disturbed. The Buyer is responsible for ensuring that the warranty on the motorcycle is not affected by the fitting of the Products. On return of any defective Products R&G shall at its option either supply a replacement or refund the purchase money but shall not be liable if the Products have been modified or used or maintained otherwise than in accordance with R&G's or manufacturer's instructions and good engineering practice or if the defect arises from accident or neglect. Other than identified above and subject to R&G not limiting its liability for causing death and personal injury, it shall not be liable for indirect or consequential loss and otherwise its liability shall be limited to the amounts paid by the Buyer for the Products or the fitting or service concerned. These terms do not affect the Buyer's statutory rights.

#### **R&G RACING RETURNS POLICY (NON-FAULTY GOODS)**

Returns must be pre-authorized (if not pre-authorized the return will be rejected). Goods may only be returned direct to us if they were purchased direct from us (customer must prove if necessary). Otherwise to be returned to original vendor. Goods must be in re-sellable condition, in the opinion of R&G Racing. All returns are subject to a 25% restocking and handling fee (25% of the gross value exc. P&P – at the prevailing price at time of purchase). The customer must pay any and all carriage charges. No returns of discontinued products, unless within 14 days of purchase. This policy does not affect your statutory rights and does not refer to faulty goods.

R&G

Unit 1, Shelley's Lane, East Worldham, Alton, Hampshire, GU34 3AQ

Tel: +44 (0)1420 89007 Fax: +44 (0)1420 87301 [www.rg-racing.com](http://www.rg-racing.com) Email: [info@rg-racing.com](mailto:info@rg-racing.com)



## **NOTICE DE MONTAGE POUR LP0347 SUPPORT DE PLAQUE**



**CE KIT CONTIENT LES ARTICLES ILLUSTRÉS ET ÉTIQUETES SUR LA PAGE.**

CERTAINES PARTIES PEUVENT ÊTRE PRÉSENTES UNIQUEMENT POUR LA CLARTÉ DES INSTRUCTIONS.

NE PAS PROCÉDER AU MONTAGE TANT QUE VOUS N'ÊTES PAS SÛR QUE TOUTES LES PIÈCES SOIENT PRÉSENTES.

**VEUILLEZ LIRE TOUTES LES INSTRUCTIONS AVANT DE CONTINUER.**

**EN CAS DE DOUTE LORS DU MONTAGE DE NOS PRODUITS, CONSULTEZ UN DE NOS REVENDUEURS OU FAITES APPEL À UN TECHNICIEN QUALIFIÉ.**

VEUILLEZ NOTER QUE LA FAÇON DONT LE KIT EST EMBALLÉ NE REPRÉSENTE PAS NECESSAIREMENT LA MANIÈRE DE LE MONTER SUR LA MOTO.

SI DES RONDELLES EN CAOUTCHOUC SONT UTILISÉES POUR MAINTENIR LES COMPOSANTS SUR LES BOULONS, ELLES PEUVENT ÊTRE JETÉES.

**NOTICE DISPONIBLE AU TÉLÉCHARGEMENT SUR : [WWW.RG-RACING.COM](http://WWW.RG-RACING.COM)**

R&G

Unit 1, Shelley's Lane, East Worldham, Alton, Hampshire, GU34 3AQ  
Tel: +44 (0)1420 89007 Fax: +44 (0)1420 87301 [www.rg-racing.com](http://www.rg-racing.com) Email: [info@rg-racing.com](mailto:info@rg-racing.com)



<b><u>OUTILS REQUIS</u></b>	<b><u>VALEURS DE SERRAGE</u></b>
<ul style="list-style-type: none"> <li>• Clés Allen 3mm, 4mm and 5mm.               <ul style="list-style-type: none"> <li>• Clé Torx T30</li> </ul> </li> <li>• Clé à cliquet + douilles 6, 8 &amp; 10mm.</li> <li>• Clé à molette 8mm &amp; 10mm.               <ul style="list-style-type: none"> <li>• Tournevis cruciforme.</li> </ul> </li> </ul>	M4 BOULON = 8Nm M5 BOULON = 12Nm M6 BOULON = 15Nm M8 BOULON = 20Nm M10 BOULON = 40Nm M12 BOULON = 40Nm

### **LÉGENDE**

<b>ARTICLE No.</b>	<b>DESCRIPTION</b>		<b>QTÉ</b>
1	TB0347 PARTIE 1	SUPPORT PRINCIPAL	1
2	TB0347 PARTIE 2	SUPPORT DE PLAQUE	1
3	LA0002	ASSEMBLAGE FEU DE PLAQUE	1
4	CON0013	CONNECTEUR DE FEU DE PLAQUE	1
5	M5x0.80x16mm	BOULON	4
6	M5x10mm Ø	RONDELLE PLATE	4
7	M6x12mm Ø	RONDELLE PLATE	4
8	M5x0.8	ÉCROU	4
9	IWC0002	CACHE FIL DE CLIGNOTANT	2
10	666-896	200mm MANCHON THERMO RÉTRACTABLE	4
11	CT75	2.5mm WIDE x 75mm COLLIERS DE SERRAGE	5
12	CLIP1	CLIPS AUTOCOLLANT	2
13	REFL3	RÉFLECTEUR	1

R&G

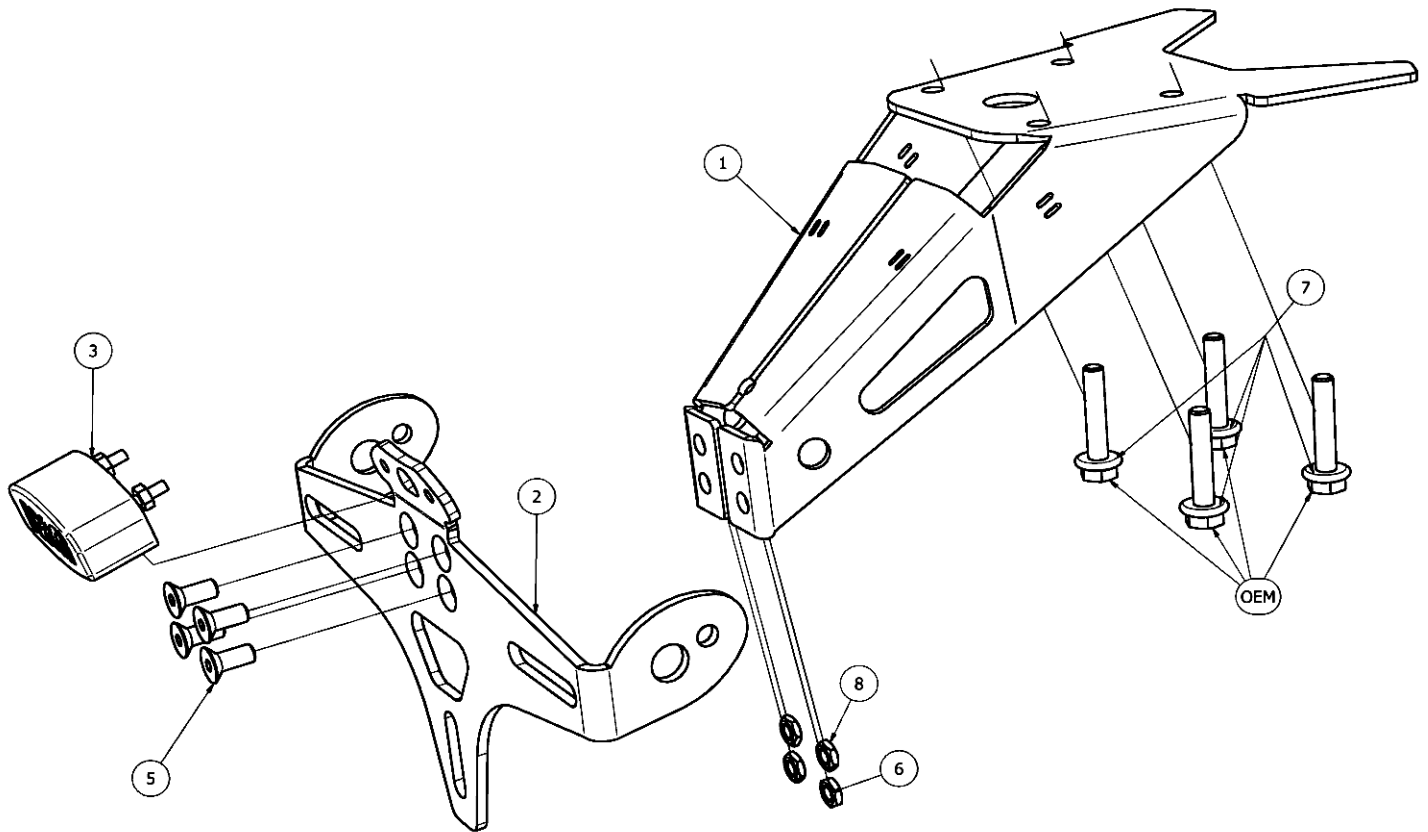
Unit 1, Shelley's Lane, East Worldham, Alton, Hampshire, GU34 3AQ

Tel: +44 (0)1420 89007 Fax: +44 (0)1420 87301 [www.rg-racing.com](http://www.rg-racing.com) Email: [info@rg-racing.com](mailto:info@rg-racing.com)



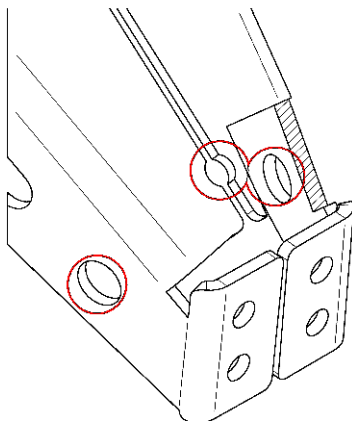


**SCHÉMA D'ENSEMBLE**



**PHOTOS DE MONTAGE**

**Photo 1**



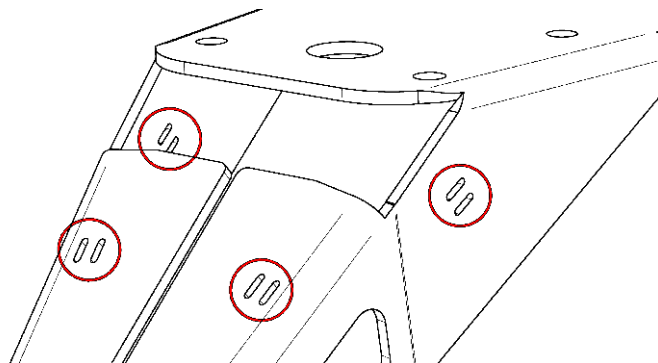
**Photo 2**



R&G

Unit 1, Shelley's Lane, East Worldham, Alton, Hampshire, GU34 3AQ

Tel: +44 (0)1420 89007 Fax: +44 (0)1420 87301 [www.rg-racing.com](http://www.rg-racing.com) Email: [info@rg-racing.com](mailto:info@rg-racing.com)

**Photo 3****Photo 4**

## **NOTICE DE MONTAGE**

Avant de monter le support R&G, vous devrez retirer certaines pièces d'origine. Vous trouverez ci-dessous une liste suggérée de pièces à retirer.

- Unité de selle du pilote
- Mécanisme de verrouillage du siège
- Siège arrière
- Support de plaque d'immatriculation
- Clignotants
- Câblage des clignotants et des feux de plaque d'immatriculation

### **Assemblage du support**

*Avant d'assembler ce produit, assurez-vous que tous les composants de la boîte soient corrects en comparant la légende et les schémas.*

#### **Enlever le support d'origine**

6. Retirez la selle du pilote via le verrou entre la selle du pilote et la selle du passager.
7. Soulevez doucement le panneau en plastique avec le mécanisme de verrouillage du siège et déplacez-le d'un côté.
8. À l'aide d'une clé Allen, retirez le boulon unique derrière le mécanisme de verrouillage qui maintient le siège arrière en place.
9. Retirez les deux boulons qui maintiennent la sangle du siège arrière en place ou manœuvrez soigneusement le siège arrière à travers la sangle, puis retirez le siège arrière.
10. Débranchez les connecteurs du clignotant arrière et du feu de plaque d'immatriculation situés sous la selle du passager à l'intérieur d'un carénage en silicone.

R&G

Unit 1, Shelley's Lane, East Worldham, Alton, Hampshire, GU34 3AQ

Tel: +44 (0)1420 89007 Fax: +44 (0)1420 87301 [www.rg-racing.com](http://www.rg-racing.com) Email: [info@rg-racing.com](mailto:info@rg-racing.com)



### **Désassembler le support d'origine**

5. Retirez tous les boulons visibles de l'unité et retirez la plaque de support en plastique.
6. Une fois retiré, le cadre de l'empennage doit être visible, retirez l'écrou qui maintient les clignotants en place ainsi que les colliers de serrage.
7. Tirez les câbles des clignotants à travers le châssis.
8. Remontez l'unité sans clignotants et rangez le.

### **Assemblage du support de plaque R&G**

9. Appliquez le manchon thermo rétractable fournie (article 10) ou le ruban isolant sur les câbles de clignotant et le feu de plaque d'immatriculation fourni (article 3) pour couvrir tous les fils exposés, puis fixez le CON0013 (article 4) aux connecteurs de feu de plaque d'immatriculation.
10. À l'aide des boulons, écrous et rondelles 4X M5 (articles 5, 6 et 8), assemblez le support de plaque d'immatriculation (article 2) avec le support de montage principal (article 1).
11. À l'aide du manchon thermo rétractable ou isolant fourni, appliquez une petite quantité à l'extrémité du couvercle du câblage de clignotant pour l'empêcher de bouger (Photos 2 & 3)
12. Poussez les câbles de clignotant d'origine à travers les supports de clignotant sur le support de plaque d'immatriculation (article 2), puis à travers les trous du support de montage principal (article 2).
13. Faites glisser les écrous et rondelles d'origine, puis le couvercle du câblage de clignotant (article 9).

**Note :** *Les couvercles de câblage peuvent devoir être coupés à l'extrémité conique afin d'adapter les connecteurs à travers.*

14. Serrez les écrous de clignotant.
15. Faites passer les câbles de feu de plaque d'immatriculation (article 3) à travers le support de la plaque d'immatriculation et le trou de l'article 1 illustré sur la photo 1, puis ajoutez les rondelles et les écrous fournis aux barres filetées à l'arrière de l'article 3.
16. Passez les colliers de serrage fournis (article 11) dans les fentes de l'article 1 illustré sur la photo 4.

**Note:** *Fermez les serre-câbles jusqu'à ce que le support ait été attaché et connecté au câblage d'origine.*

### **Fixer le support R&G**

9. Appliquez les rondelles 4X M6 (article 7) sur les boulons à tête hexagonale à embase d'origine M6.
10. Avec les 4 boulons M6 d'origine à portée de main, présentez l'assemblage au passage de roue de la moto.
11. Faites passer les câbles de clignotant et de feu de plaque d'immatriculation à travers le trou de câblage du panneau inférieur.
12. Vissez à la main les boulons un par un jusqu'à ce que les quatre soient suffisamment serrés pour maintenir l'ensemble en position.
13. À ce stade, fixez les connecteurs de clignotant et de feu de plaque d'immatriculation au faisceau de câblage d'origine.
14. Vérifiez le fonctionnement des clignotants et des feux de plaque d'immatriculation – et que les clignotants gauche et droit soient correctement orientés.
15. Trouvez une position appropriée pour fixer les câbles/résistances en ligne sous le support.

R&G

Unit 1, Shelley's Lane, East Worldham, Alton, Hampshire, GU34 3AQ

Tel: +44 (0)1420 89007 Fax: +44 (0)1420 87301 [www.rg-racing.com](http://www.rg-racing.com) Email: [info@rg-racing.com](mailto:info@rg-racing.com)



16. Serrez les quatre boulons de façon égale.

**IMPORTANT : SI VOUS MONTEZ UNE PLAQUE D'IMMATRICULATION DE GRANDE TAILLE ET LA PLACEZ BIEN EN BAS SUR LE SUPPORT DE PLAQUE D'IMMATRICULATION, IL Y A UN RISQUE QUE LA PLAQUE D'IMMATRICULATION FRAPPE LA ROUE ARRIÈRE SOUS UNE CHARGE LOURDE ET SUR DE GROSSES BOSSES SUR LA ROUTE. IL EST DE VOTRE RESPONSABILITÉ DE VÉRIFIER CETTE POSSIBILITÉ ET DE PRENDRE DES MESURES POUR ÉVITER. NE PAS VÉRIFIER CELA POURRAIT ENTRAÎNER DES BLESSURES GRAVES.**

ISSUE 1 05/10/2022 (TB)

#### CONSUMER NOTICE

The catalogue description and any exhibition of samples are only broad indications of the Products and R&G may make design changes which do not diminish their performance or visual appeal and supplying them in such state shall conform to the order. The Buyer acknowledges no representation or warranty (other than as to title) has been given or will apply to the Products other than those in R&G's order or confirmation and the Buyer confirms it has chosen the Products as being of merchantable quality and suitable for its particular purposes. Where R&G fits the Products or undertakes other services it shall exercise reasonable skill and care and rectify any fault free of charge unless the workmanship has been disturbed. The Buyer is responsible for ensuring that the warranty on the motorcycle is not affected by the fitting of the Products. On return of any defective Products R&G shall at its option either supply a replacement or refund the purchase money but shall not be liable if the Products have been modified or used or maintained otherwise than in accordance with R&G's or manufacturer's instructions and good engineering practice or if the defect arises from accident or neglect. Other than identified above and subject to R&G not limiting its liability for causing death and personal injury, it shall not be liable for indirect or consequential loss and otherwise its liability shall be limited to the amounts paid by the Buyer for the Products or the fitting or service concerned. These terms do not affect the Buyer's statutory rights.

#### R&G RACING RETURNS POLICY (NON-FAULTY GOODS)

Returns must be pre-authorized (if not pre-authorized the return will be rejected). Goods may only be returned direct to us if they were purchased direct from us (customer must prove if necessary). Otherwise to be returned to original vendor. Goods must be in re-sellable condition, in the opinion of R&G Racing. All returns are subject to a 25% restocking and handling fee (25% of the gross value exc. P&P – at the prevailing price at time of purchase). The customer must pay any and all carriage charges. No returns of discontinued products, unless within 14 days of purchase. This policy does not affect your statutory rights and does not refer to faulty goods.

R&G

Unit 1, Shelley's Lane, East Worldham, Alton, Hampshire, GU34 3AQ

Tel: +44 (0)1420 89007 Fax: +44 (0)1420 87301 [www.rg-racing.com](http://www.rg-racing.com) Email: [info@rg-racing.com](mailto:info@rg-racing.com)