



**FITTING INSTRUCTIONS FOR LP0306BK LICENCE PLATE BRACKET
FOR KAWASAKI NINJA ZX10-RR/R 2021-
FOR ORIGINAL AND AFTERMARKET M8 INDICATORS**



THIS KIT CONTAINS THE ITEMS PICTURED AND LABELLED OVER PAGE.

SOME PARTS MAY BE SHOWN FOR CLARITY OF INSTRUCTIONS ONLY.

DO NOT PROCEED UNTIL YOU ARE SURE ALL PARTS ARE PRESENT.

PLEASE READ ALL INSTRUCTIONS BEFORE PROCEEDING.

**IF IN ANY DOUBT WHEN FITTING OUR PRODUCTS, CONSULT ONE OF
OUR DEALERS OR HAVE FITTED BY A QUALIFIED TECHNICIAN.**

PLEASE NOTE THAT THE WAY THE KIT IS PACKED DOES NOT NECESSARILY REPRESENT THE
WAY OF MOUNTING TO THE BIKE.

IN THE EVENT OF RUBBER WASHERS BEING USED TO HOLD COMPONENTS ONTO BOLTS,
THESE RUBBER WASHERS CAN BE THROWN AWAY.

DIGITAL COPIES OF THESE INSTRUCTIONS ARE AVAILABLE FROM:

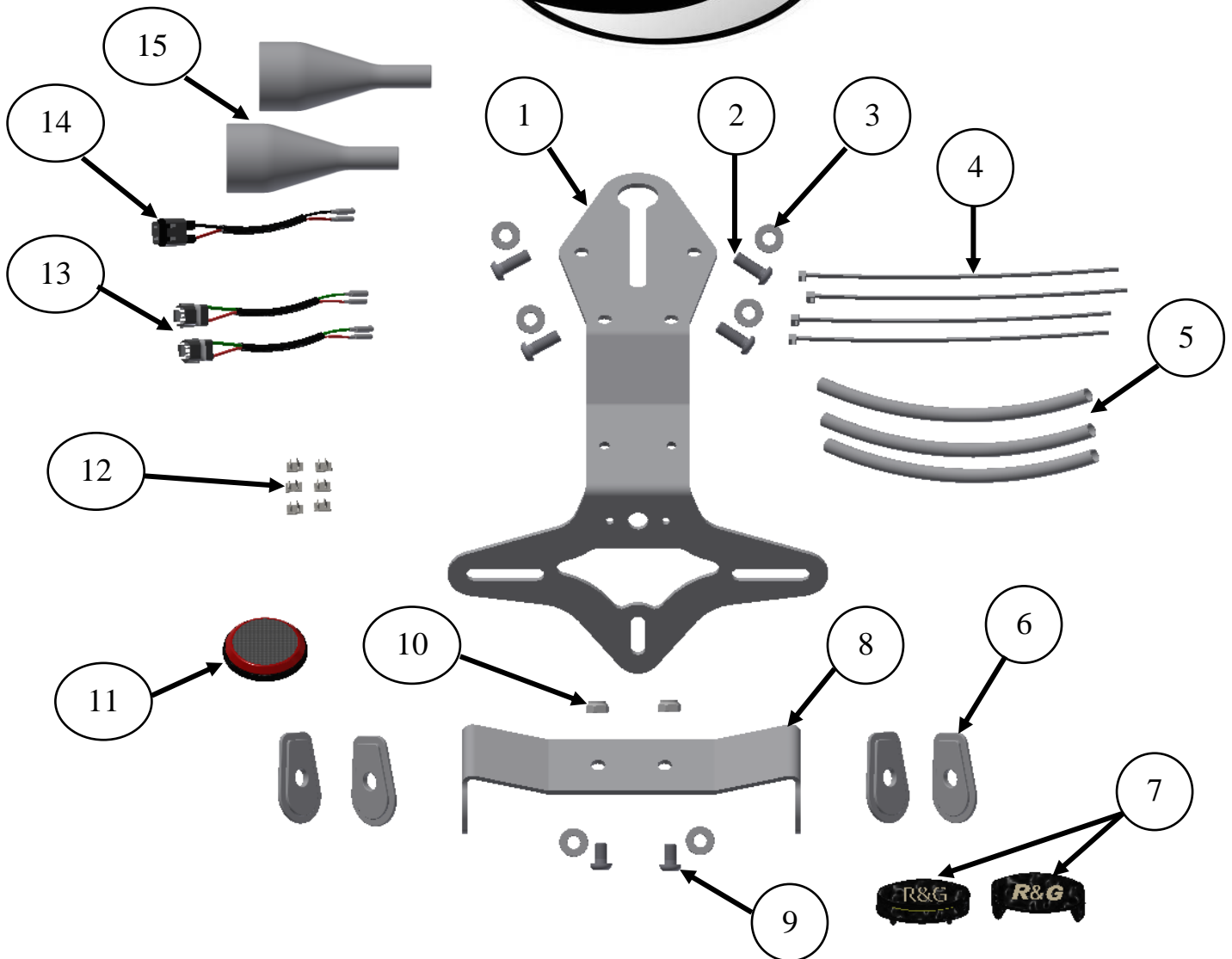
WWW.RG-RACING.COM



<u>TOOLS REQUIRED</u>	<u>GENERAL TORQUE SETTINGS</u>
<ul style="list-style-type: none"> • Set of Metric Allen keys. • Metric socket and wrench. • Phillips screwdriver. • Cable cutters. • Small amount of adhesive. 	<p>M4 BOLT = 8Nm</p> <p>M5 BOLT = 12Nm</p> <p>M6 BOLT = 15Nm</p> <p>M8 BOLT = 20Nm</p> <p>M10 BOLT = 40Nm</p> <p>M12 BOLT = 40Nm</p>

ITEM NO.	DESCRIPTION	QTY
ITEM 1	LICENCE PLATE BRACKET (TB0306 PART 1)	1
ITEM 2	M6 x 15mm LONG BUTTON HEAD BOLTS	4
ITEM 3	M6 WASHERS	6
ITEM 4	2.5mm CABLE TIES	4
ITEM 5	200mm LENGTHS OF HEATSHRINK	3
ITEM 6	MINI INDICATOR ADAPTORS (I0026)	4
ITEM 7	LA0002 LICENCE PLATE ILLUMINATOR ASSEMBLY (LA0002)	1
ITEM 8	INDICATOR BRACKET (TB0306 PART 2)	1
ITEM 9	M6 x 10mm LONG BUTTON HEAD BOLTS	2
ITEM 10	M6 NYLOC NUTS	2
ITEM 11	REFLECTOR (REFL 3)	1
ITEM 12	SELF-ADHESIVE CABLE CLIPS	6
ITEM 13	R&G MINI INDICATOR CONNECTORS (CON0060)	2
ITEM 14	LICENCE PLATE ILLUMINATOR CONNECTOR (CON0051)	1
ITEM 15	INDICATOR WIRING COVERS (IWC0002)	2

R&G



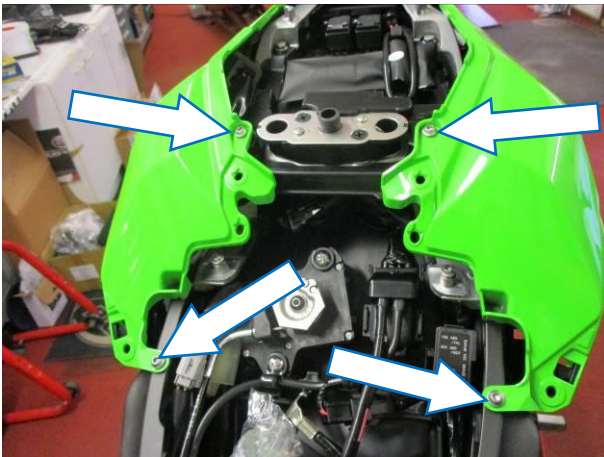
Assembly Diagram



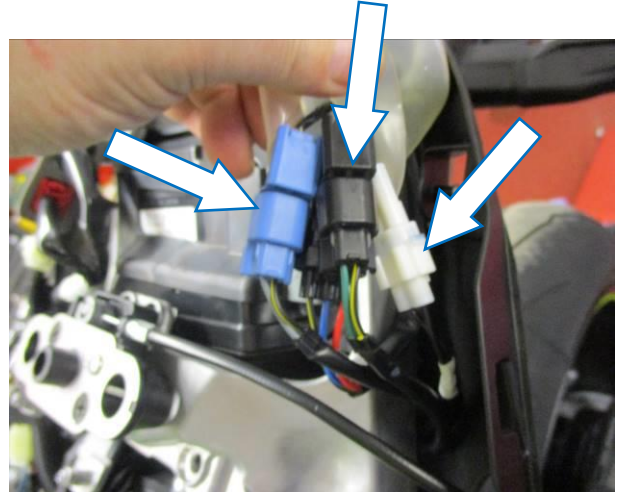
PICTURE 1



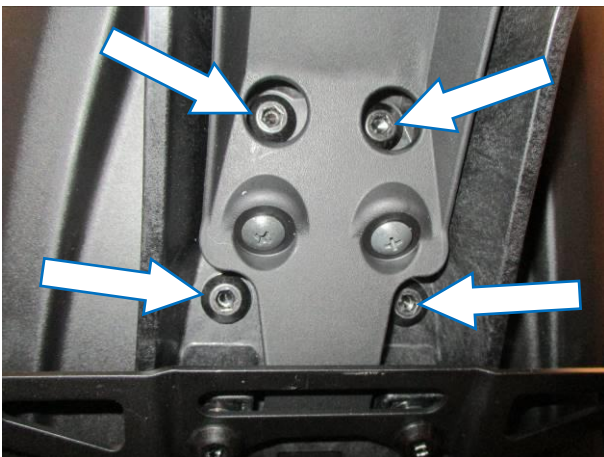
PICTURE 2



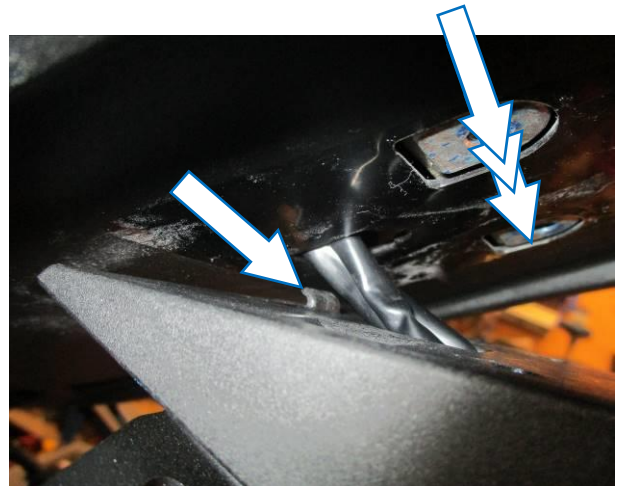
PICTURE 3



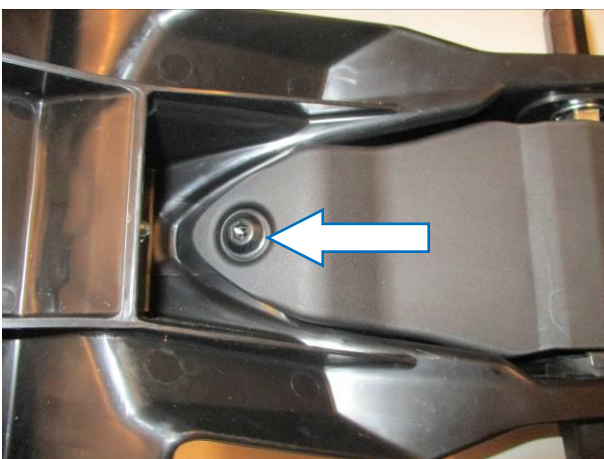
PICTURE 4



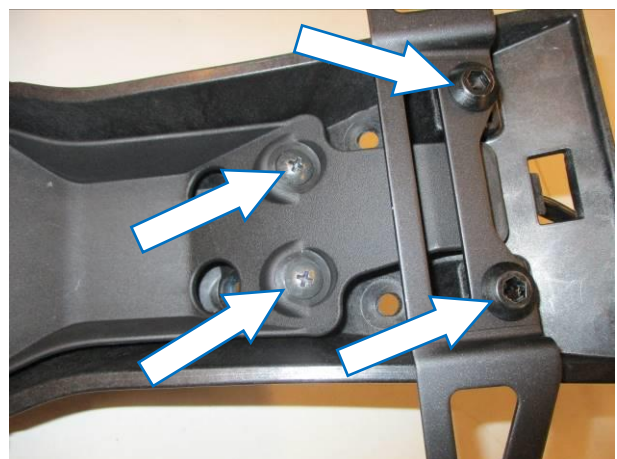
PICTURE 5



PICTURE 6



PICTURE 7



PICTURE 8



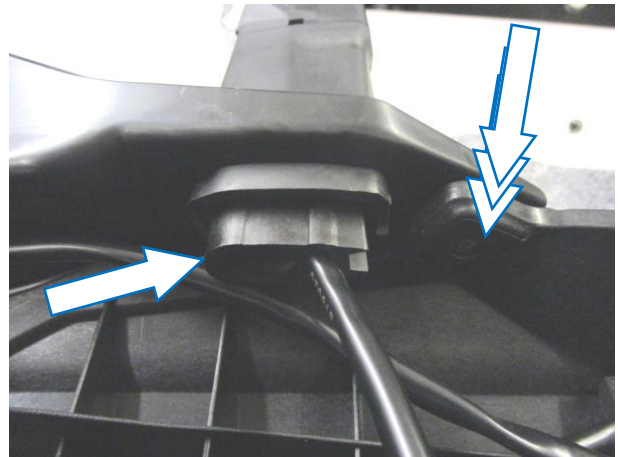
PICTURE 9



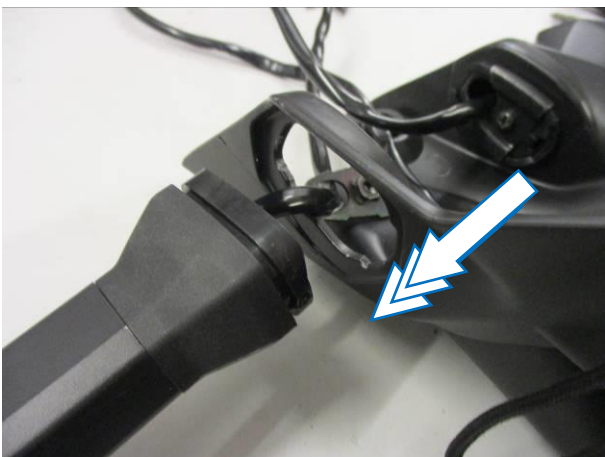
PICTURE 10



PICTURE 11



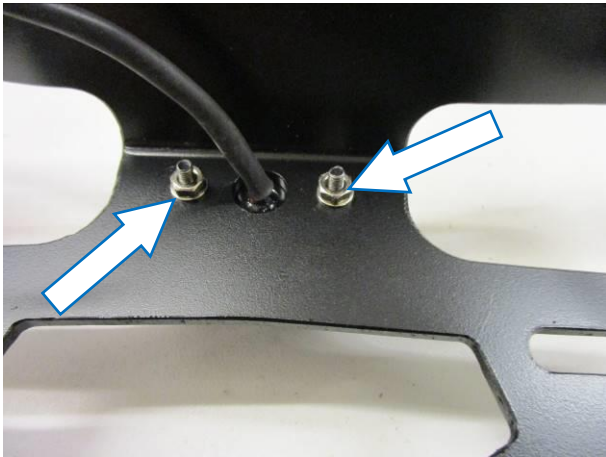
PICTURE 12



PICTURE 13



PICTURE 14



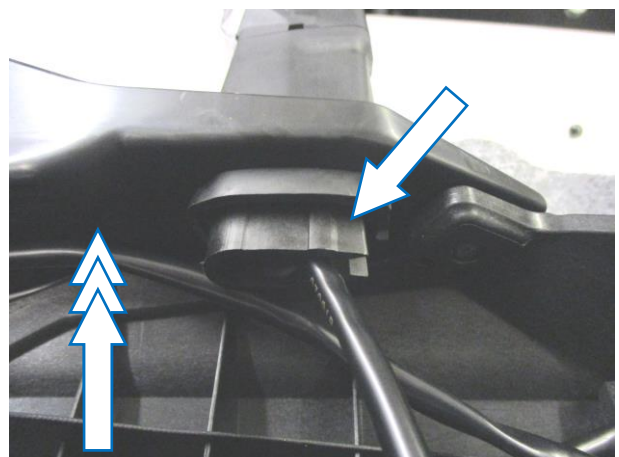
PICTURE 15



PICTURE 16



PICTURE 17



PICTURE 18



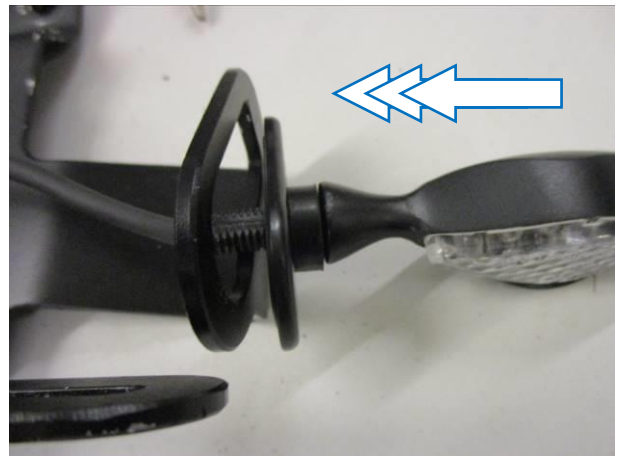
PICTURE 19



PICTURE 20



PICTURE 21



PICTURE 22



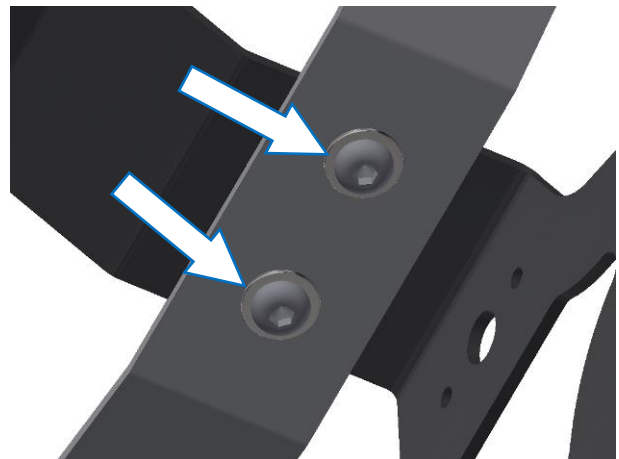
PICTURE 23



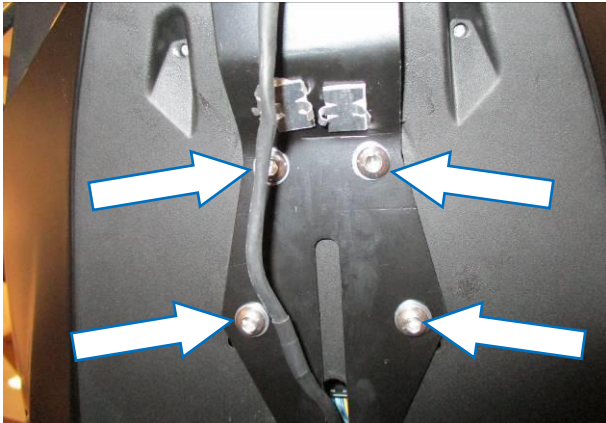
PICTURE 24



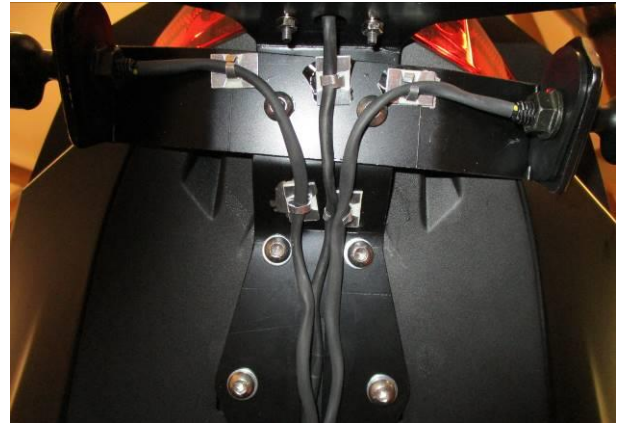
PICTURE 25



PICTURE 26



PICTURE 27



PICTURE 28

FITTING INSTRUCTIONS

- To fit the R&G tail tidy, first remove the pillion seat using the key.
- Remove the infill panel from between the seats as shown in **picture 1**.
- Remove the two bolts and two push rivets arrowed in **picture 2** and carefully remove the outer seat surrounds (on the key side you do not have to remove the key lock mechanism, just protect and support to avoid removal).
- Remove the four bolts arrowed in **picture 3** and carefully remove the seat cowl.
- Disconnect the three wiring plug sockets for the licence plate illuminator and indicators arrowed in **picture 4**.
- Remove the four bolts arrowed in **picture 5** while supporting the original licence plate bracket.
- Carefully lower the original licence plate bracket while feeding the wiring through the hole in the under-tray as shown in **picture 6** and remove the assembly.

If reusing the original indicators

- Remove the five bolts arrowed in **pictures 7** and **8**, this will allow the cover to be removed.
- Remove the indicator clamp screw arrowed in **picture 9**.
- Remove the indicator clamp as shown in **picture 10**.
- Remove the indicator spreader plate as shown in **picture 11**.
- Remove the plastic support/insert as shown in **picture 12**.
- Gently squeeze the indicator stem and remove the indicator as shown in **picture 13**.
- Repeat the above steps to remove the opposite indicator.
- Fit the indicators into the new indicator bracket (**item 8**) and secure as shown in **pictures 16, 17, 18, 19** and **20**.

If using the mini indicators

- To fit the R&G Mini Indicators (R&G mini indicator product code RG370 for bulb type and RG371 or RG374 for LED type or RG372 for Aero Style led type).

R&G

Unit 1, Shelley's Lane, East Worldham, Alton, Hampshire, GU34 3AQ

Tel: +44 (0)1420 89007 Fax: +44 (0)1420 87301 www.rg-racing.com Email: info@rg-racing.com