



LP0247

**FITTING INSTRUCTIONS FOR LP0247BK LICENCE PLATE BRACKET
KAWASAKI H2 SX 2018 (FOR USE WITH STANDARD AND R&G MINI
INDICATORS (8mm))**

Page | 1



**THIS KIT CONTAINS THE ITEMS PICTURED AND LABELLED BELOW.
DO NOT PROCEED UNTIL YOU ARE SURE ALL PARTS ARE PRESENT.**

**Please note that the way the kit is packed does not necessarily represent the way of
mounting to the bike**

THE PARTS SHOWN MAY BE REPRESENTATIVE ONLY (FOR CLARITY OF INSTRUCTIONS ONLY)

Digital copies of these instructions are available to download from www.rg-racing.com

GENERAL TORQUE SETTINGS

M4 BOLT = 8Nm
M5 BOLT = 12Nm
M6 BOLT = 15Nm
M8 BOLT = 20Nm
M10 BOLT = 40Nm

Please note that in cases where kits are packed with rubber washers holding the components onto the bolt – *the rubber washers should be thrown away!*

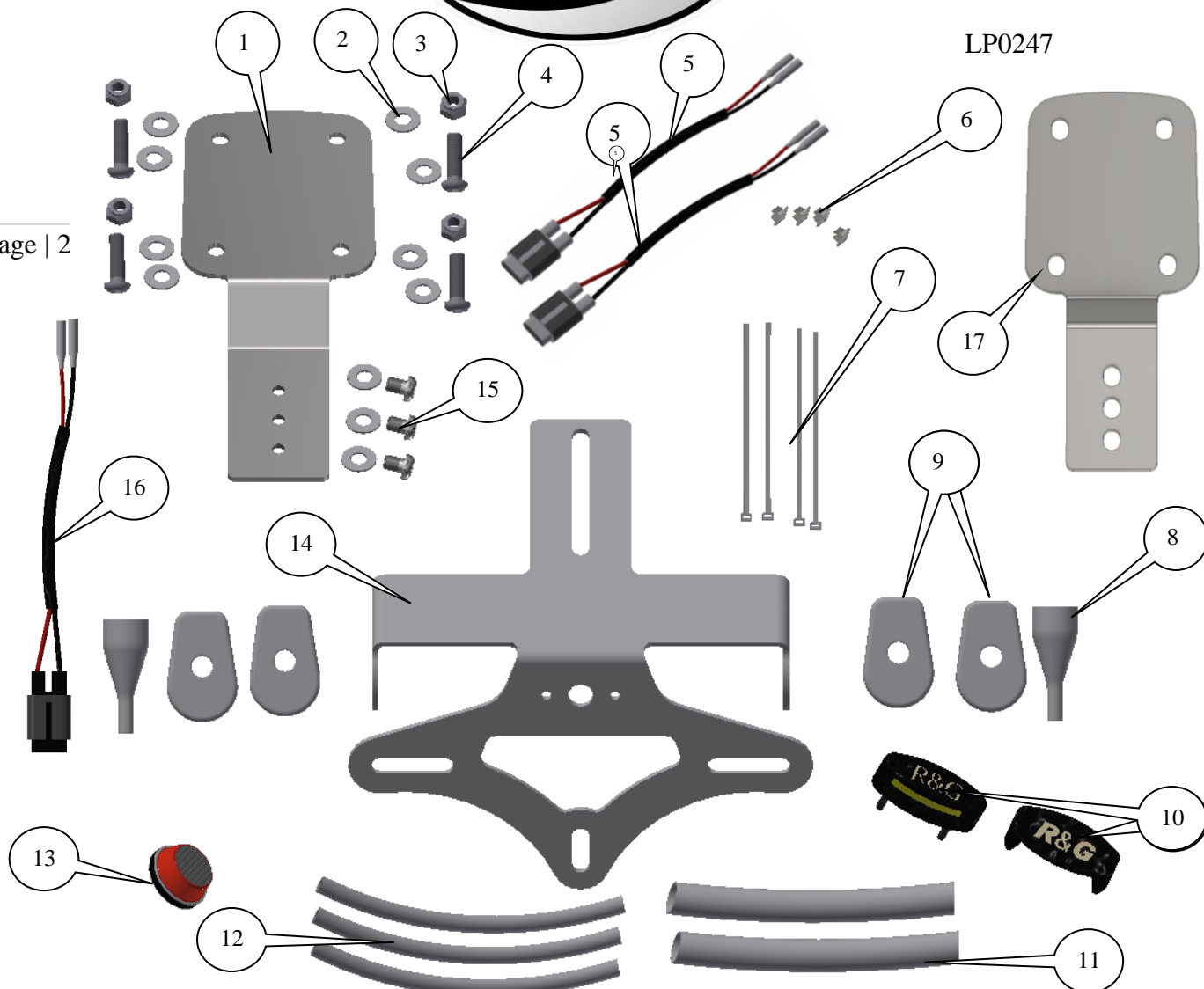
TOOLS REQUIRED

- Set of metric Allen keys to include 3, 4 and 5mm A/F sizes.
- Socket set to include 6, 10 and 12mm A/F socket and wrench or spanners.
 - Phillips driver.
 - Electrical pliers/crimps.
 - Small amount of super glue.

R&G Racing
Unit 1, Shelley's Lane, East Worldham, Alton, Hampshire, GU34 3AQ
Tel: +44 (0)1420 89007 Fax: +44 (0)1420 87301 www.rg-racing.com Email: info@rg-racing.com



Page | 2



LEGEND

ITEM 1 = LICENCE PLATE MOUNTING BRACKET (TB0247 PART 1) (x1).

ITEM 2 = M6 WASHER (x11).

ITEM 3 = M6 NYLOC NUTS (x4).

ITEM 4 = M6 x 25mm LONG BUTTON HEAD BOLTS (x4).

ITEM 5 = R&G MINI INDICATOR CONNECTORS (CON0035) (x2).

ITEM 6 = CABLE CLIPS (x4).

ITEM 7 = CABLE TIES (x4).

ITEM 8 = SILICON INDICATOR NUT COVERS (IWC0002) (x2).

ITEM 9 = MINI INDICATOR ADAPTORS (I0039) (x4).

ITEM 10 = LICENCE PLATE ILLUMINATOR ASSEMBLY (LA0002) (x1).

ITEM 11 = 150mm LENGTH OF LARGE HEAT SHRINK (x2).

ITEM 12 = 230mm LENGTH OF SMALL HEAT SHRINK (x3).

ITEM 13 = REFLECTOR (REFL 1) (x1).

ITEM 14 = LICENCE PLATE BRACKET (TB0247 PART 2) (x1).

ITEM 15 = M6 x 10mm LONG BUTTON HEAD BOLTS (x3).

ITEM 16 = LICENCE PLATE ILLUMINATOR CONNECTOR (CON0051) (x1).

ITEM 17 = LICENCE PLATE SUPPORT BRACKET (TB0247 PART 3) (x1).

R&G Racing

Unit 1, Shelley's Lane, East Worldham, Alton, Hampshire, GU34 3AQ

Tel: +44 (0)1420 89007 Fax: +44 (0)1420 87301 www.rg-racing.com Email: info@rg-racing.com



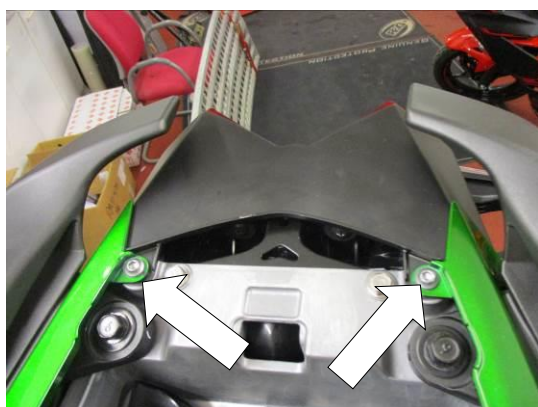
LP0247



Picture 1



Picture 2



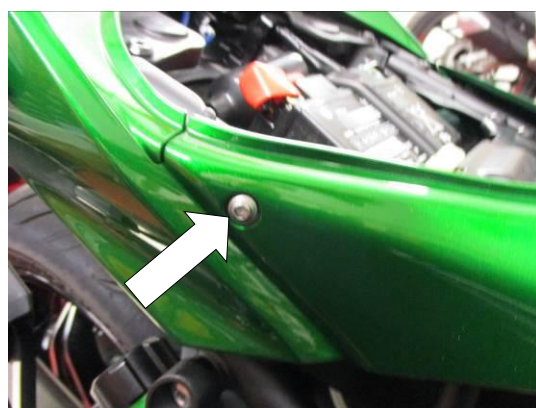
Picture 3



Picture 4



Picture 5



Picture 6



LP0247

Page | 4



Picture 7



Picture 8



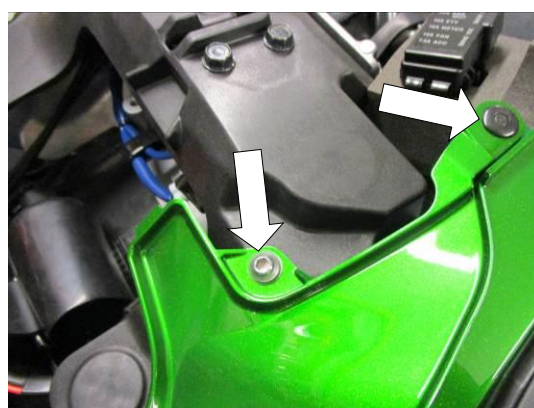
Picture 9



Picture 10



Picture 11

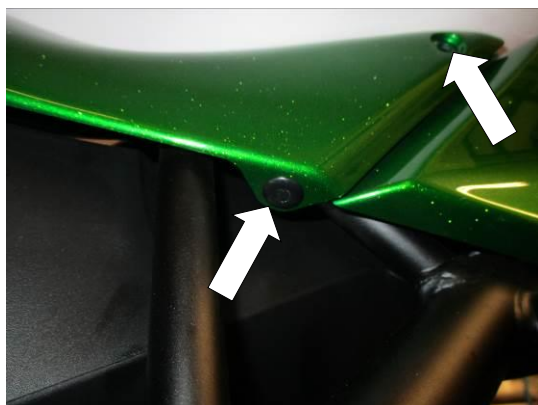


Picture 12

R&G Racing
Unit 1, Shelley's Lane, East Worldham, Alton, Hampshire, GU34 3AQ
Tel: +44 (0)1420 89007 Fax: +44 (0)1420 87301 www.rg-racing.com Email: info@rg-racing.com



LP0247



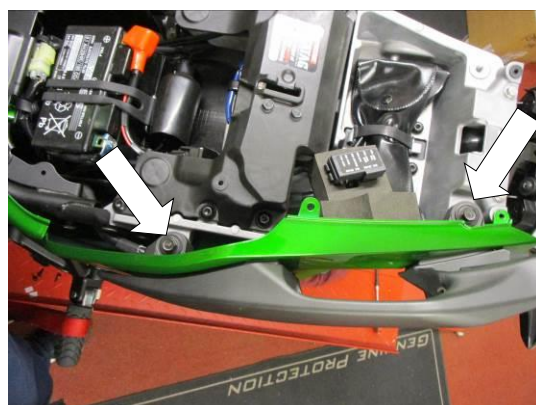
Picture 13



Picture 14



Picture 15



Picture 16



Picture 17

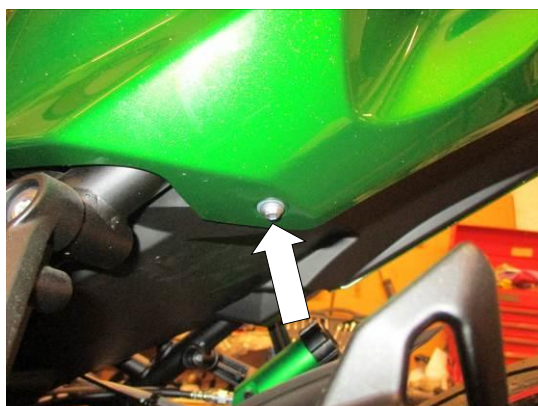


Picture 18



LP0247

Page | 6



Picture 19



Picture 20



Picture 21



Picture 22



Picture 23



Picture 24

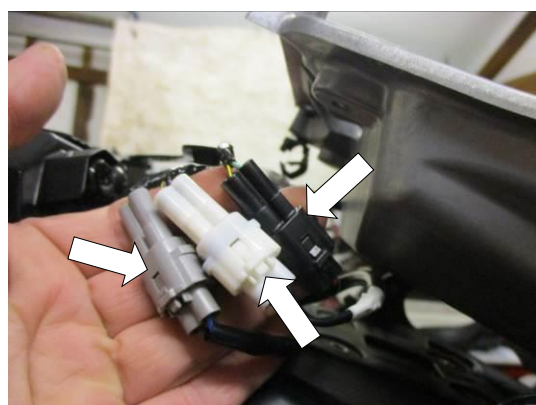


LP0247

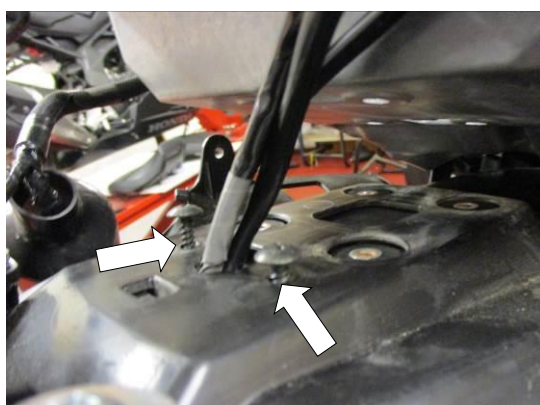
Page | 7



Picture 25



Picture 26



Picture 27



Picture 28



Picture 29



Picture 30



LP0247



Picture 31



Picture 32



Picture 33



Picture 34



Picture 35



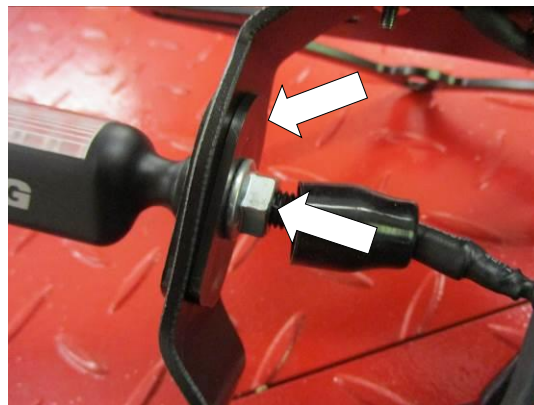
Picture 36



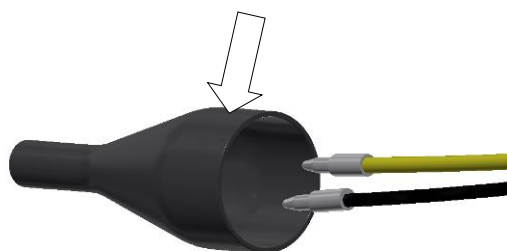
LP0247



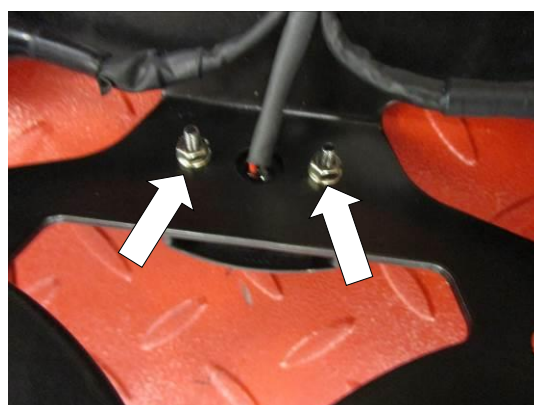
Picture 37



Picture 38



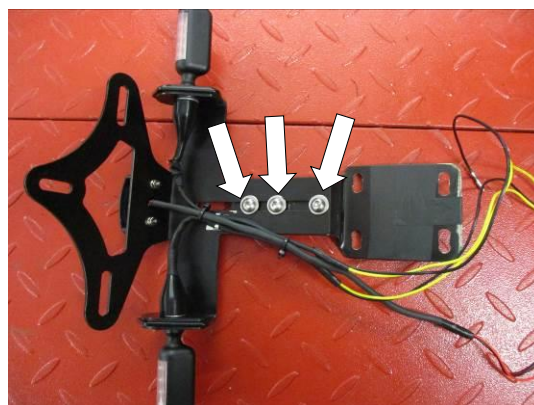
Picture 39



Picture 40



Picture 41



Picture 42



LP0247

Page | 10



Picture 43



Picture 44



Picture 45



Picture 46

FITTING INSTRUCTIONS

- To fit the R&G tail tidy, first remove the pillion seat using the key as shown in picture 1.
- Remove the main rider seat as shown in picture 2.
- Remove the two bolts arrowed in picture 3.
- Remove the four push rivets arrowed in pictures 4 and 5 (please be aware all the fairing bolts have plastic washers which should be reused on assembly).
- Remove the bolt arrowed in picture 6.
- Remove the push rivet arrowed in picture 7.
- Remove the bolt arrowed in picture 8.
- Remove the push rivet arrowed in picture 9.
- Carefully ease the right-hand side seat infill panel away from the frame and remove the push rivet arrowed in picture 10.
- Carefully remove the infill panel as shown in picture 11.
- Remove the bolt arrowed in picture 12.
- Remove the push rivet and bolt arrowed in picture 13.

R&G Racing
Unit 1, Shelley's Lane, East Worldham, Alton, Hampshire, GU34 3AQ
Tel: +44 (0)1420 89007 Fax: +44 (0)1420 87301 www.rg-racing.com Email: info@rg-racing.com



LP0247

Page | 11

- Carefully ease the left-hand side seat infill panel away from the frame and remove the push rivet arrowed in picture 14.
- Carefully remove the infill panel as shown in picture 15.
- Remove the two hex headed bolts arrowed in picture 16 and remove the left-hand side grab rail.
- Remove the two hex headed bolts arrowed in picture 17 and remove the right-hand side grab rail.
- Remove the two push rivets arrowed in picture 18.
- Remove the two bolts arrowed in pictures 19 and 20.
- Carefully remove the two seat cowls as shown in pictures 21 and 22.
- Remove the two bolts arrowed in pictures 23 and 24.
- Remove the four bolts arrowed in picture 25 while supporting the original licence plate bracket from below.
- Slide the rubber plug socket cover along the wiring loom to give access to the indicator and licence plate illuminator as indicated in picture 26.
- Disconnect the three wiring plug sockets arrowed in picture 26.
- Gently lower the original licence plate bracket and remove the two screws arrowed in picture 27.

If reusing the original indicators

- Remove the four screws arrowed in picture 28.
- Remove the plastic wiring cover/splash guard to allow access to the indicators.
- Remove the indicator clamp screw arrowed in picture 29
- Remove the indicator clamp bracket as arrowed in picture 30.
- Remove the indicator spreader plate as arrowed in picture 31.
- Gently squeeze the indicator stem and remove the indicator as shown in picture 32
- Repeat the above steps to remove the opposite indicator.
- Fit the indicators into the new licence plate bracket (item 14) and secure as shown in pictures 33, 34, 35 and 36.

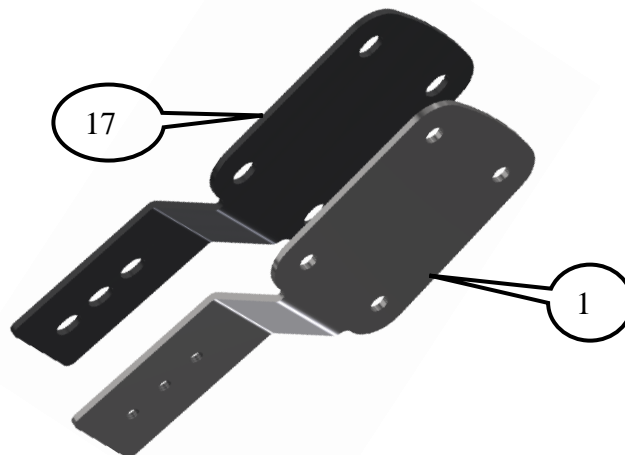
If using the mini indicators

- To fit the R&G Mini Indicators (R&G mini indicator product code RG371 for LED type or RG372 for Aero Style led type).
- Position the two indicator adaptors (item 9 –I0039) onto the wiring of each indicator, ensuring the sides facing each other have the raised centre profile, before fitting the flanged nut supplied, as shown in pictures 37 and 38.
- Feed the indicator wiring through the nut/wire cover (item 8) as shown in pictures 39 and 41 (it helps if a small amount of liquid detergent is used) and position the nut cover over the nut.
- Fit one length of smaller heat-shrink (item 12) to the wires of each indicator so it goes over the tail of the nut/wire covers.
- Fit the R&G licence plate illuminator (item 10) as shown in pictures 40 and 41, please note you will have to fit the light shroud and use a small amount of adhesive to hold it in position. Fit one length of the smaller heat-shrink (item 12) to the wire.



LP0247

Page | 12



- Fit the licence plate support bracket (item 17) to the underside of the licence plate mounting bracket (item 1) as shown above.
- Fit the licence plate mounting bracket and support bracket (items 1 and 17) to the licence plate bracket (item 14) using the M6x10mm long button head bolts with washers (items 2 and 15) as shown in picture 42 (please leave the bolts loose at this stage).
- Tidy the wiring to the licence plate bracket using the supplied clips and cable ties (items 6 and 7) as shown in picture 42.
- Offer the new licence plate bracket into position while feeding the wiring through the hole in the under-tray as shown in picture 43.
- Fit the four button head bolts with washers (items 2 and 4) through the four holes in the new licence plate mounting bracket (item 1) as shown in picture 44.
- Secure using the four nuts with washers (items 2 and 3) as shown in picture 45, please ensure the wires are not crushed.
- Reconnect the indicators to the indicator wiring plug sockets as original using the supplied connectors (item 5) (please check for illumination at this stage, if illumination fails please swap the bullet connectors over and recheck for correct operation).
- Reconnect the licence plate illuminator to the licence plate illuminator wiring plug sockets as original using the supplied connector (item 16) (please check for illumination at this stage, if illumination fails please swap the bullet connectors over and recheck for correct operation).
- Refit all panels as original.
- Adjust the new licence plate bracket to suit using the three bolts from the underside (if using luggage care must be taken to ensure the luggage will not damage indicators when being removed).
- Refit the seats as original and licence plate (it may require drilling).
- **IMPORTANT: IF FITTING A FULL-SIZE LICENCE PLATE AND PLACING IT FAR DOWN ON THE LICENCE PLATE HANGER, THERE IS A SMALL CHANCE OF THE LICENCE PLATE HITTING THE BACK WHEEL UNDER HEAVY LOAD AND OVER LARGE BUMPS IN THE ROAD. IT IS YOUR RESPONSIBILITY TO CHECK FOR THIS POSSIBILITY AND TAKE AVOIDING ACTION. FAILURE TO CHECK THIS COULD RESULT IN SERIOUS INJURY.**
- Depending on local laws, attach enclosed reflector (item 13) in an appropriate location.
- Test the licence plate illuminator, indicators and all lights before riding.

R&G Racing

Unit 1, Shelley's Lane, East Worldham, Alton, Hampshire, GU34 3AQ

Tel: +44 (0)1420 89007 Fax: +44 (0)1420 87301 www.rg-racing.com Email: info@rg-racing.com