



**FITTING INSTRUCTIONS FOR LP0289BK LICENCE PLATE BRACKET**  
**FOR KAWASAKI NINJA 1000SX 2020-**  
**FOR ORIGINAL AND AFTERMARKET M8 INDICATORS**



**THIS KIT CONTAINS THE ITEMS PICTURED AND LABELLED OVER PAGE.**

SOME PARTS MAY BE SHOWN FOR CLARITY OF INSTRUCTIONS ONLY.

DO NOT PROCEED UNTIL YOU ARE SURE ALL PARTS ARE PRESENT.

**PLEASE READ ALL INSTRUCTIONS BEFORE PROCEEDING.**

**IF IN ANY DOUBT WHEN FITTING OUR PRODUCTS, CONSULT ONE OF OUR DEALERS  
OR HAVE FITTED BY A QUALIFIED TECHNICIAN.**

PLEASE NOTE THAT THE WAY THE KIT IS PACKED DOES NOT NECESSARILY REPRESENT THE WAY OF  
MOUNTING TO THE BIKE.

IN THE EVENT OF RUBBER WASHERS BEING USED TO HOLD COMPONENTS ONTO BOLTS,  
THESE RUBBER WASHERS CAN BE THROWN AWAY.

**DIGITAL COPIES OF THESE INSTRUCTIONS ARE AVAILABLE FROM:**

[WWW.RG-RACING.COM](http://WWW.RG-RACING.COM)

R&G

Unit 1, Shelley's Lane, East Worldham, Alton, Hampshire, GU34 3AQ

Tel: +44 (0)1420 89007 Fax: +44 (0)1420 87301 [www.rg-racing.com](http://www.rg-racing.com) Email: [info@rg-racing.com](mailto:info@rg-racing.com)



<b><u>TOOLS REQUIRED</u></b>	<b><u>GENERAL TORQUE SETTINGS</u></b>
<ul style="list-style-type: none"> <li>• Set of metric Allen keys to include 3, 4, 5 &amp; 6mm A/F size.</li> <li>• 8, 10 and 12mm spanners or sockets and wrench.</li> <li>• Phillips screwdriver.</li> <li>• Cable cutters.</li> <li>• Small amount of adhesive.</li> </ul>	<p>M4 BOLT = 8Nm</p> <p>M5 BOLT = 12Nm</p> <p>M6 BOLT = 15Nm</p> <p>M8 BOLT = 20Nm</p> <p>M10 BOLT = 40Nm</p> <p>M12 BOLT = 40Nm</p>

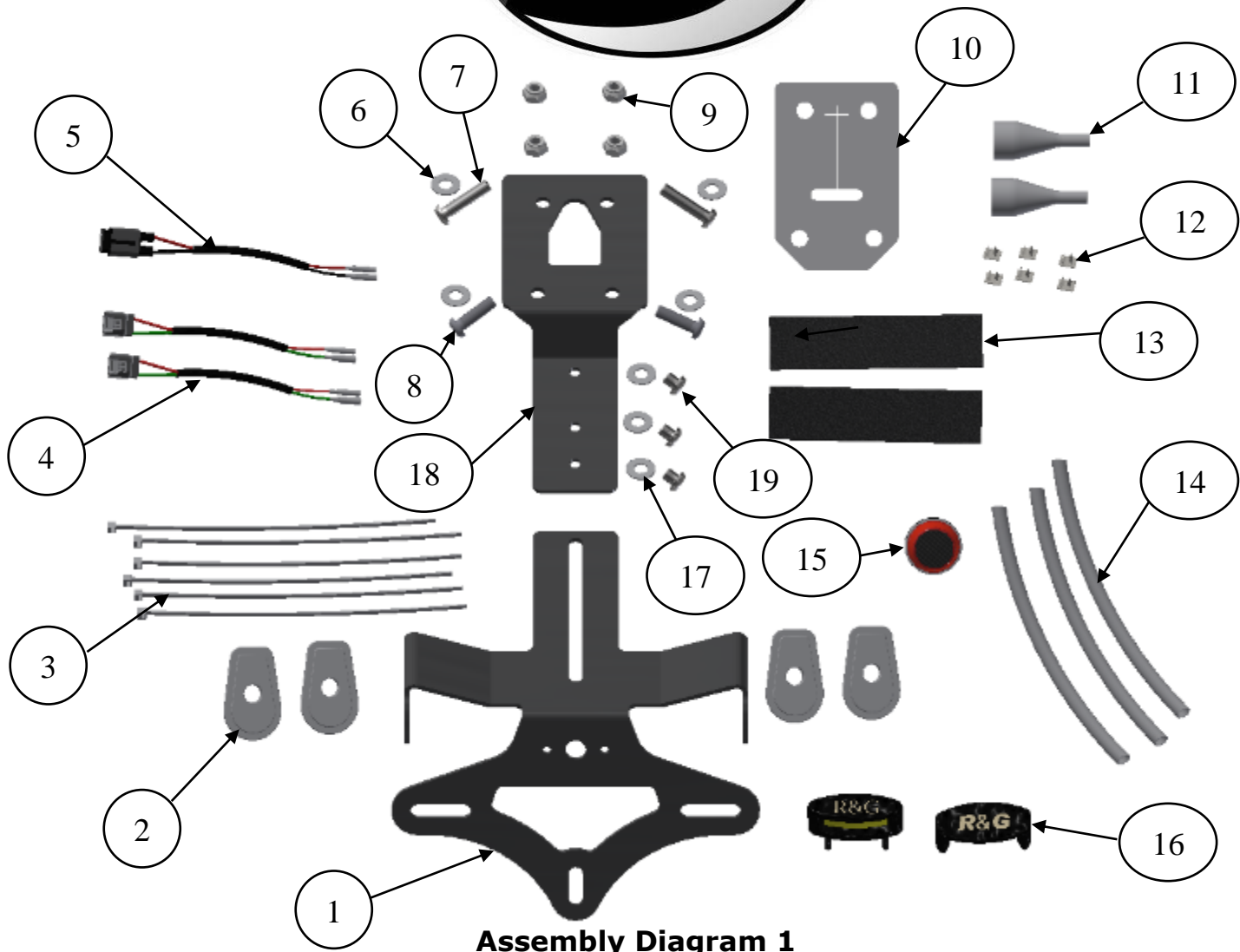
### **LEGEND**

<b>ITEM NO.</b>	<b>DESCRIPTION</b>	<b>QTY</b>
ITEM 1	LICENCE PLATE BRACKET (TB0289 PART 1)	1
ITEM 2	MINI INDICATOR ADAPTORS (I0026)	4
ITEM 3	2.5mm CABLE TIES	6
ITEM 4	R&G MINI INDICATOR CONNECTORS (CON0060)	2
ITEM 5	LICENCE PLATE ILLUMINATOR CONNECTOR (CON0051)	1
ITEM 6	M6 WASHERS (12mm DIA)	4
ITEM 7	M6 x 25mm LONG BUTTON HEAD BOLTS	2
ITEM 8	M6 x 20mm LONG BUTTON HEAD BOLTS	2
ITEM 9	M6 NYLOC NUTS	4
ITEM 10	RUBBER GASKET (RG0015)	1
ITEM 11	INDICATOR WIRING COVERS (IWC0001)	2
ITEM 12	SELF-ADHESIVE CABLE CLIPS	4
ITEM 13	SELF ADHESIVE FOAM	2
ITEM 14	150mm LENGTH OF HEATSHRINK	3
ITEM 15	REFLECTOR (REFL 3)	1
ITEM 16	LICENCE PLATE ILLUMINATOR ASSEMBLY (LA0002)	1
ITEM 17	M6 WASHERS (16mm DIA)	3
ITEM 18	MOUNTING BRACKET (TB0289 PART 2)	1
ITEM 19	M6 x 6mm LONG BUTTON HEAD BOLTS	3

R&G

Unit 1, Shelley's Lane, East Worldham, Alton, Hampshire, GU34 3AQ

Tel: +44 (0)1420 89007 Fax: +44 (0)1420 87301 [www.rg-racing.com](http://www.rg-racing.com) Email: [info@rg-racing.com](mailto:info@rg-racing.com)



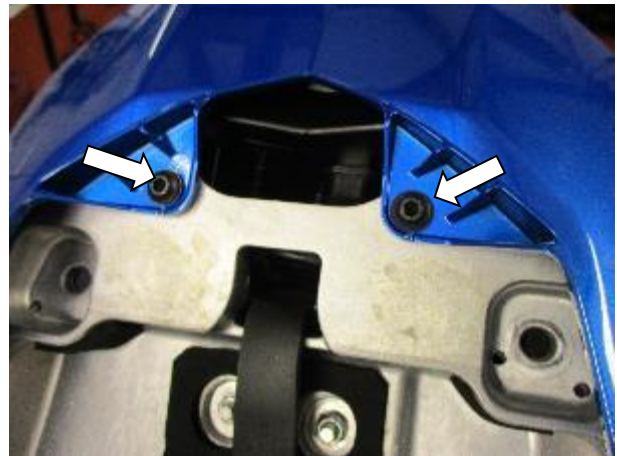
PICTURE 1



PICTURE 2



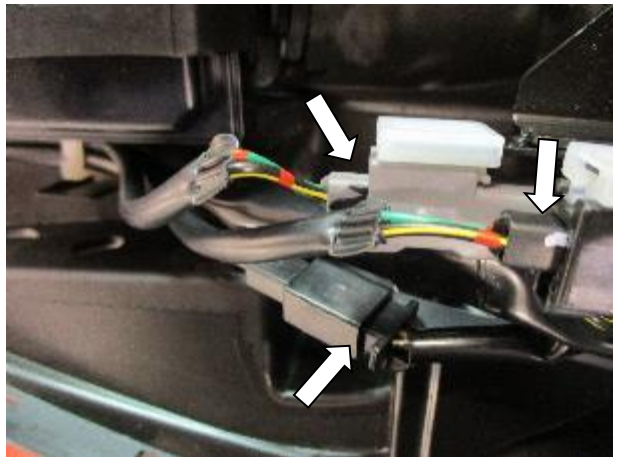
PICTURE 3



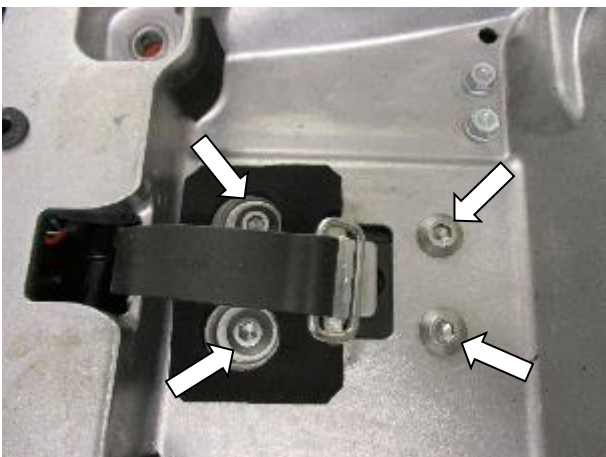
PICTURE 4



PICTURE 5



PICTURE 6



PICTURE 7



PICTURE 8

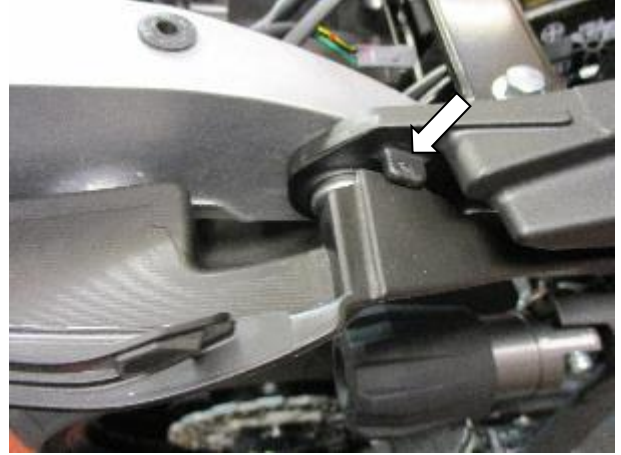
R&G

Unit 1, Shelley's Lane, East Worldham, Alton, Hampshire, GU34 3AQ

Tel: +44 (0)1420 89007 Fax: +44 (0)1420 87301 [www.rg-racing.com](http://www.rg-racing.com) Email: [info@rg-racing.com](mailto:info@rg-racing.com)



PICTURE 9



PICTURE 10



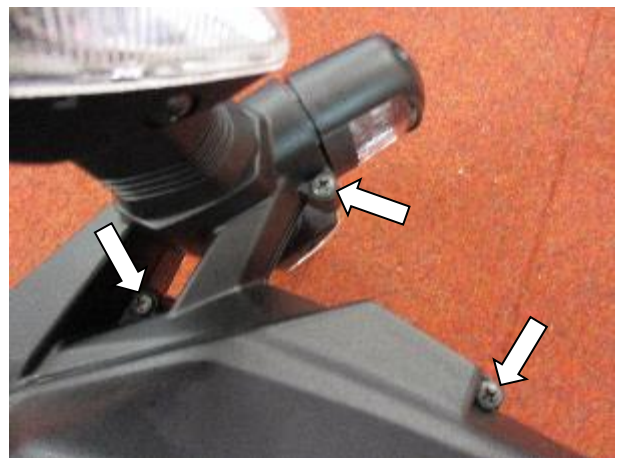
PICTURE 11



PICTURE 12



PICTURE 13



PICTURE 14

R&G

Unit 1, Shelley's Lane, East Worldham, Alton, Hampshire, GU34 3AQ

Tel: +44 (0)1420 89007 Fax: +44 (0)1420 87301 [www.rg-racing.com](http://www.rg-racing.com) Email: [info@rg-racing.com](mailto:info@rg-racing.com)



PICTURE 15



PICTURE 16



PICTURE 17



PICTURE 18



PICTURE 19



PICTURE 20

R&G

Unit 1, Shelley's Lane, East Worldham, Alton, Hampshire, GU34 3AQ

Tel: +44 (0)1420 89007 Fax: +44 (0)1420 87301 [www.rg-racing.com](http://www.rg-racing.com) Email: [info@rg-racing.com](mailto:info@rg-racing.com)



PICTURE 21



PICTURE 22



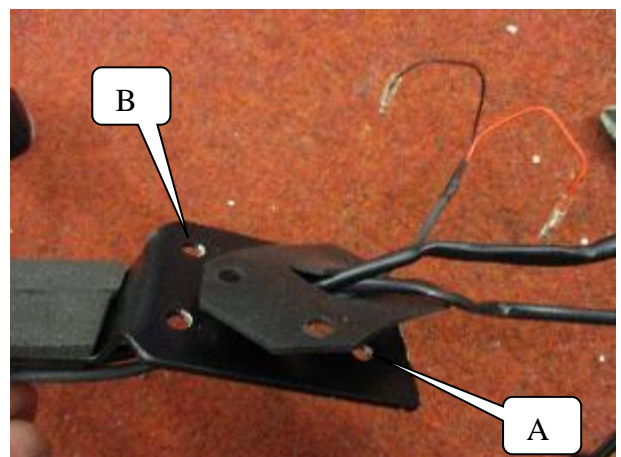
PICTURE 23



PICTURE 24



PICTURE 25



PICTURE 26

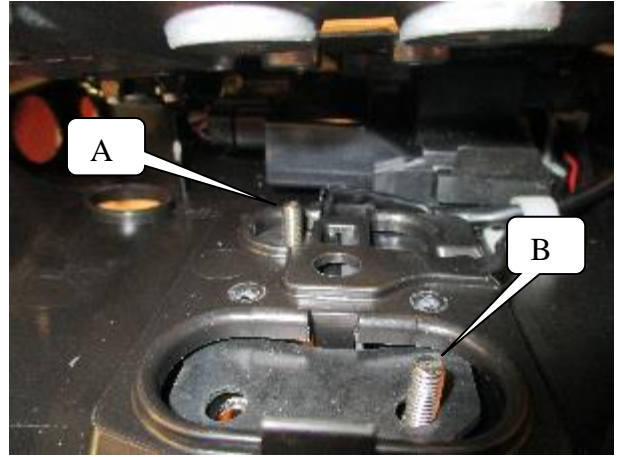
R&G

Unit 1, Shelley's Lane, East Worldham, Alton, Hampshire, GU34 3AQ

Tel: +44 (0)1420 89007 Fax: +44 (0)1420 87301 [www.rg-racing.com](http://www.rg-racing.com) Email: [info@rg-racing.com](mailto:info@rg-racing.com)



PICTURE 27



PICTURE 28



PICTURE 29



PICTURE 30



PICTURE 31



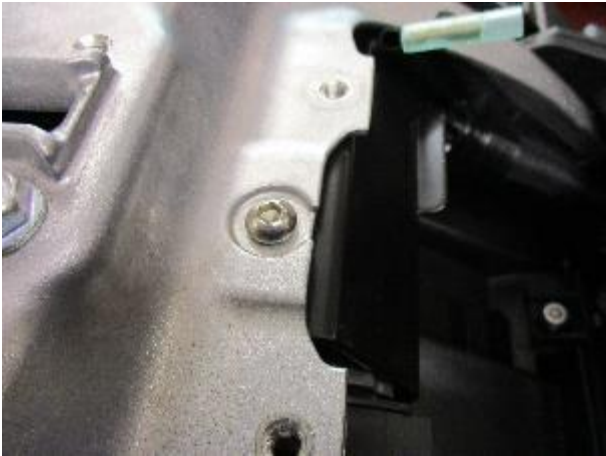
PICTURE 32

R&G

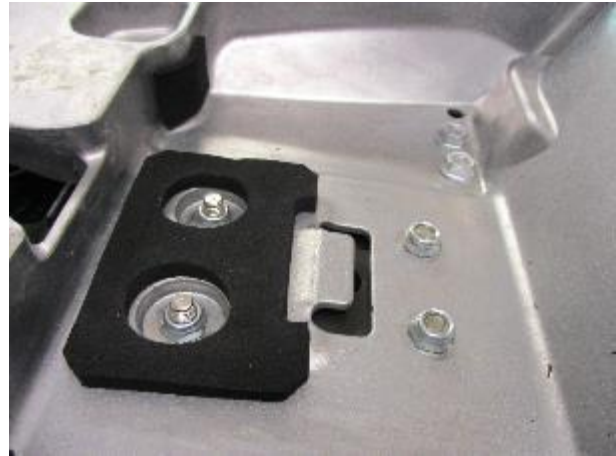
Unit 1, Shelley's Lane, East Worldham, Alton, Hampshire, GU34 3AQ

Tel: +44 (0)1420 89007 Fax: +44 (0)1420 87301 [www.rg-racing.com](http://www.rg-racing.com) Email: [info@rg-racing.com](mailto:info@rg-racing.com)





PICTURE 33



PICTURE 34

### **FITTING INSTRUCTIONS**

- Remove the panniers, rider and pillion seats.
- Remove the two bolts arrowed in **picture 1**.
- Remove the two bolts arrowed in **pictures 2 and 3**, then remove both pannier mounting brackets.
- Remove the four bolts arrowed in **pictures 4 and 5**.
- Carefully remove the rear sub-frame cowl.
- Disconnect the three wiring plug sockets arrowed in **picture 6**.
- Remove the four bolts arrowed in **picture 7**.
- Remove the two bolts arrowed in **picture 8**.
- Gently unclip the plastic under-tray from the location tabs shown in **pictures 9 and 10** and gently lower the under-tray (you will have to feed the tool kit bungee through the slot in the rear sub-frame) until it rests on the rear wheel.
- With the under-tray lowered remove the two screws arrowed in **picture 11**.
- Carefully remove the wiring taking note of its routing.
- Carefully remove the original licence plate bracket while feeding all the wires through the holes in the under-tray.

### **If reusing the original indicators**

- Remove the two bolts arrowed in **picture 12** and remove the licence plate bolt bracket.
- Remove the nut arrowed in **picture 13** and remove the reflector.
- Remove the three bolts arrowed in **picture 14**, the bracket can now be carefully separated into two halves.
- Remove the screw arrowed in **picture 15** and then the clamp plate and the spreader plate.
- Then squeeze the rubber indicator stem to allow the indicator to be removed as shown in **picture 16**.
- Repeat the above to remove the other indicator (please note the relevant sides as they have drain holes which should point downwards on assembly).
- Fit the indicators to the indicator/licence plate mounting bracket (**item 1**) as shown in **pictures 17, 18, 19 and 20** in the same manner as they were mounted originally (ensure they are fitted on the correct sides).

R&G

Unit 1, Shelley's Lane, East Worldham, Alton, Hampshire, GU34 3AQ

Tel: +44 (0)1420 89007 Fax: +44 (0)1420 87301 [www.rg-racing.com](http://www.rg-racing.com) Email: [info@rg-racing.com](mailto:info@rg-racing.com)

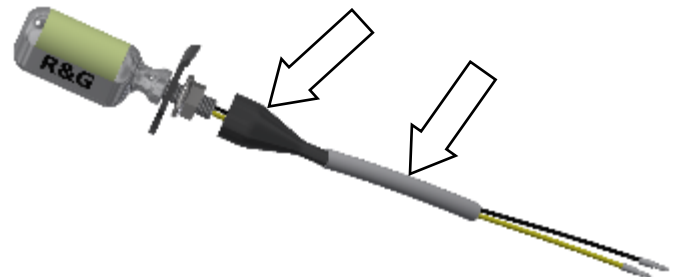
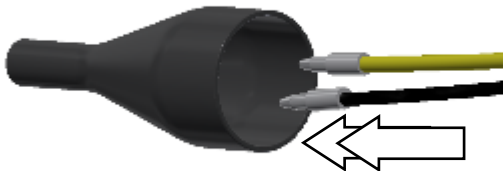


### If using Mini indicators

- If using mini's fit the indicators of choice to the indicator/licence plate mounting bracket (**item 1**) (R&G mini indicator product code RG371 for LED type or RG372 for Aero Style led type) using the four indicator adaptors (**item 2**) as shown in the pictures below and tighten the nut.



- Feed the indicator wiring through one of the nut/wire covers (**item 11**) as shown in **pictures below** (it helps if a small amount of liquid detergent is used) and position the nut cover over the nut (repeat the above for the opposite indicator).
- Fit one length of heat-shrink (**item 14**) over the wires of each indicator so the heat-shrink fits over the stem of the nut/wire cover and gently heat until the heat-shrink contracts to the wiring and nut/wire cover as shown in **pictures below**.



- Fit the new licence plate illuminator (**item 16**) to the new licence plate bracket (**item 1**) as shown in **pictures 21 and 22**.
- **PLEASE NOTE YOU WILL NEED TO GLUE THE LIGHT SHROUD TO THE LED LICENCE PLATE ILLUMINATOR USING A SUITABLE ADHESIVE.**
- Use the cable ties and clips (**items 3 and 12**) to neaten and tidy the wiring as shown in **picture 23** ensuring to leave room around the slot for bolts and washers when fully assembled.
- Stick the self-adhesive neoprene foam (**item 13**) to the mounting bracket (**item 18**) as shown in **picture 24**.
- Using the three short M6 button head bolts (**item 19**) with the larger washers (**item 17**) mount the main mounting bracket (**item 18**) to the indicator/licence plate bracket assembly

R&G

Unit 1, Shelley's Lane, East Worldham, Alton, Hampshire, GU34 3AQ

Tel: +44 (0)1420 89007 Fax: +44 (0)1420 87301 [www.rg-racing.com](http://www.rg-racing.com) Email: [info@rg-racing.com](mailto:info@rg-racing.com)



- (**item 1**) as shown in **picture 25** (position as far backwards as possible and do not tighten at this stage).
- Feed the wires through the central slot in the main bracket as shown in **picture 26**.
  - Feed the wires through the slit in the rubber gasket (**item 10**) as shown in **picture 26**.
  - Offer this assembly into position while feeding the wires through the under-tray as original (shown in **picture 27**).
  - Feed the wires through the under-tray cable guides and the sub-frame as original.
  - Gently raise the under-tray into its original position.
  - Place one of the longer M6 button head bolts (**item 7**) with one of the smaller M6 washers (**item 6**) through the hole marked 'A' and the rubber gasket as shown in **pictures 26 and 28**.
  - Place one of the shorter M6 button head bolts (**item 8**) with one of the smaller M6 washers (**item 6**) through the hole marked 'B' and the rubber gasket as shown in **pictures 26 and 28**.
  - Use two of the M6 nuts (**item 9**) to hold it in position as shown in **picture 29** (do not tighten at this stage).
  - Gently clip the plastic under-tray over location tabs shown in **pictures 30 and 31**.
  - Refit the three bolts shown in **pictures 32 and 33** as original.
  - Place the remaining longer M6 button head bolt (**item 7**) with one of the smaller M6 washers (**item 6**) through the remaining most forward hole and the rubber gasket as shown in **picture 34** and secure using one of the M6 nuts (**item 9**).
  - Place the remaining shorter M6 button head bolt (**item 8**) with one of the smaller M6 washers (**item 6**) through the remaining most rearward hole and the rubber gasket as shown in **picture 34** and secure using one of the M6 nuts (**item 9**) and tighten the four nuts.
  - Route the wiring as original.
  - Connect the licence plate illuminator using the supplied wiring connector (**item 5**) to the original wiring plug socket.
  - If using the original indicators connect the indicators to the original wiring plug sockets. It is a good idea to check the operation of the licence plate illuminator and indicators at this stage.
  - If fitting the R&G Mini Indicators connect the indicators using the supplied wiring connectors (**items 4**) to the original wiring plug socket. Plug it into the loom to check at this stage (if illumination fails, swap the bullet connections around). (Please use the heat-shrink (**item 14**) to protect the new indicator wires). It is a good idea at this point to turn the ignition on and check for the correct operation of all lights.
  - Refit the rear sub-frame cowl as original.
  - Refit the pannier brackets as original.
  - If using the panniers please fit them and position the indicator/licence plate bracket so the panniers can be removed without loosening the clamping bolts, tighten the three bolts securely.
  - If not using panniers the bracket may be positioned further forward to improve looks, please ensure all bolts are secure and no parts can contact or damage any part of the motorcycle.
  - Re-fit the licence plate (it may require drilling).
  - **IMPORTANT: IF FITTING A FULL-SIZE LICENCE PLATE AND PLACING IT FAR DOWN ON THE LICENCE PLATE HANGER, THERE IS A SMALL CHANCE OF THE LICENCE PLATE HITTING THE BACK WHEEL UNDER HEAVY LOAD AND OVER LARGE BUMPS IN THE ROAD. IT IS YOUR RESPONSIBILITY TO CHECK FOR THIS POSSIBILITY AND TAKE AVOIDING ACTION. FAILURE TO CHECK THIS COULD RESULT IN SERIOUS INJURY OR DAMAGE.**
  - Refit both seats.

R&amp;G

Unit 1, Shelley's Lane, East Worldham, Alton, Hampshire, GU34 3AQ

Tel: +44 (0)1420 89007 Fax: +44 (0)1420 87301 [www.rg-racing.com](http://www.rg-racing.com) Email: [info@rg-racing.com](mailto:info@rg-racing.com)