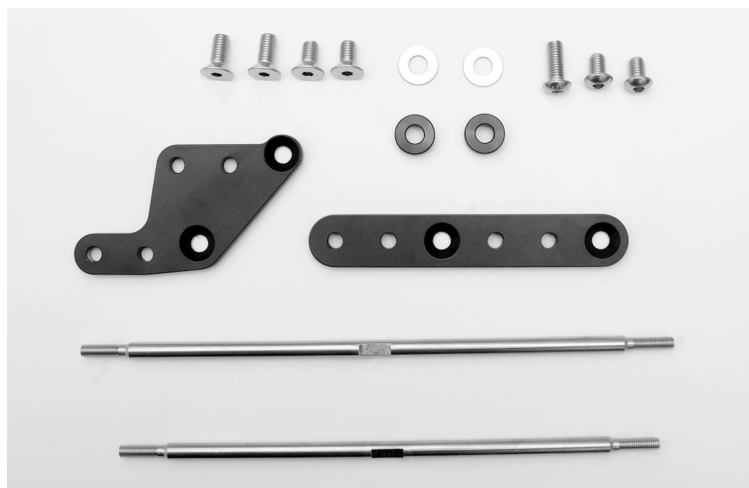




FITTING INSTRUCTIONS FOR AFC0001 ADJUSTABLE FOOT CONTROLS **KAWASAKI VULCAN 'S' 2015-**



THIS KIT CONTAINS THE ITEMS PICTURED AND LABELLED BELOW.
DO NOT PROCEED UNTIL YOU ARE SURE ALL PARTS ARE PRESENT.

Please note that the way the kit is packed does not necessarily represent the way of mounting to the bike

Please note that in cases where kits are packed with rubber washers holding the components onto the bolt – *the rubber washers should be thrown away!*

THE PARTS SHOWN MAY BE REPRESENTATIVE ONLY (FOR CLARITY OF INSTRUCTIONS ONLY)

Digital copies of these instructions are available to download from www.rg-racing.com

GENERAL TORQUE SETTINGS

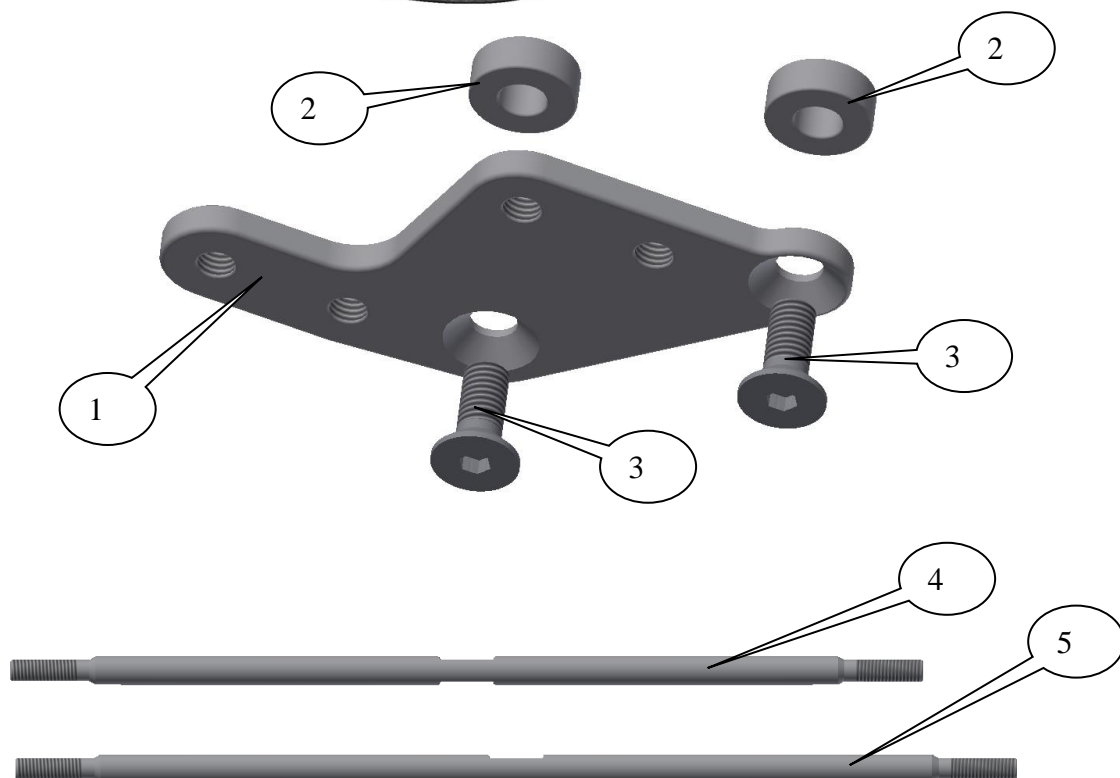
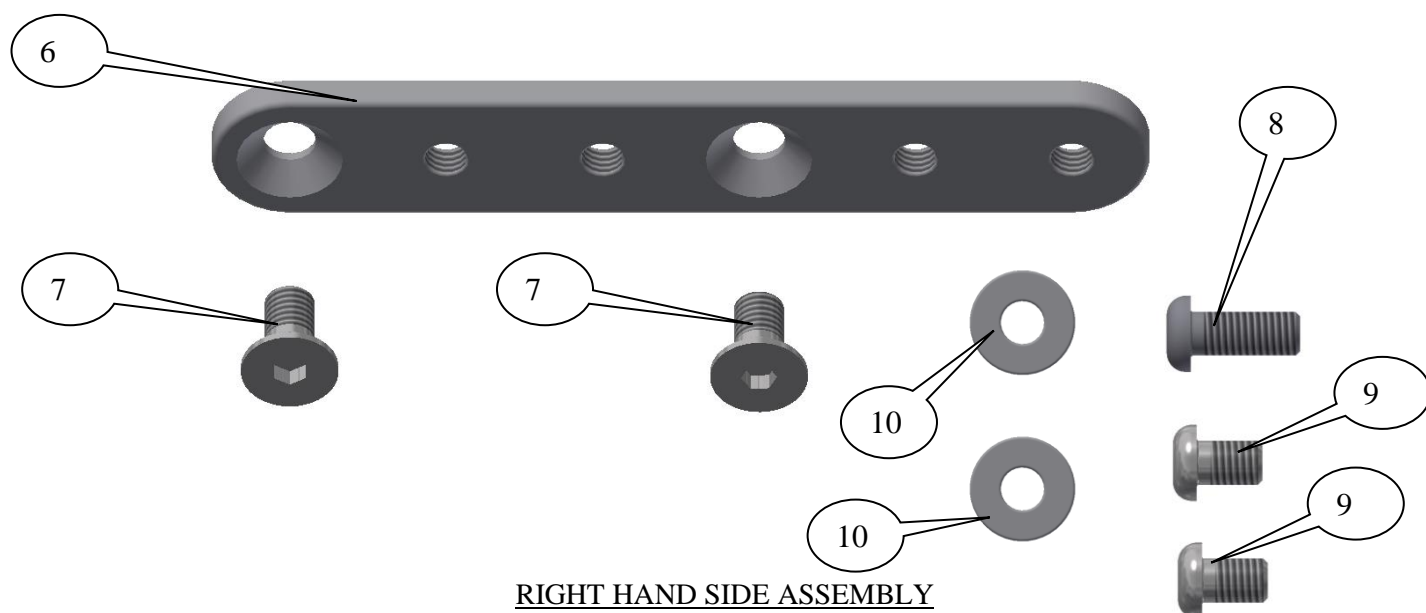
M4 BOLT = 8Nm
 M5 BOLT = 12Nm
 M6 BOLT = 15Nm
 M8 BOLT = 20Nm
 M10 BOLT = 40Nm

TOOLS REQUIRED

- Socket set to include 10 and 12mm A/F socket and wrench.
 - Set of metric Allen keys to include 5mm A/F.
 - 10mm Spanner.
 - Torque wrench (up to 20Nm).

R&G Racing

Unit 1 Shelleys Lane, East Worldham, Alton, Hants GU34 3AQ
 Tel: +44 (0)1420 89007 Fax: +44 (0)1420 87301 www.rg-racing.com Email: info@rg-racing.com

LEFT HAND SIDE ASSEMBLYRIGHT HAND SIDE ASSEMBLY**R&G Racing**

Unit 1 Shelleys Lane, East Worldham, Alton, Hants GU34 3AQ

Tel: +44 (0)1420 89007 Fax: +44 (0)1420 87301 www.rg-racing.com Email: info@rg-racing.com



LEGEND

- ITEM 1 = MOUNTING PLATE-LHS (PLATE 0170) (x1).
- ITEM 2 = MOUNTING PLATE SPACERS (S0919) (x2).
- ITEM 3 = M8x20mm LONG COUNTER-SUNK BOLTS (LHS) (x2).
- ITEM 4 = GEAR SHIFT ROD (255mm LONG) (SB0117) (x1).
- ITEM 5 = GEAR SHIFT ROD (280mm LONG) (SB0118) (x1).
- ITEM 6 = MOUNTING PLATE-RHS (PLATE 0171) (x1).
- ITEM 7 = M8x12mm LONG COUNTER-SUNK BOLTS (RHS) (x2).
- ITEM 8 = M8x20mm LONG BUTTON HEAD BOLT (RHS) (x1).
- ITEM 9 = M8x12mm LONG BUTTON HEAD BOLTS (RHS) (x2).
- ITEM 10 = M8 WASHERS (x2).

Page | 3



PICTURE 1



PICTURE 2



PICTURE 3

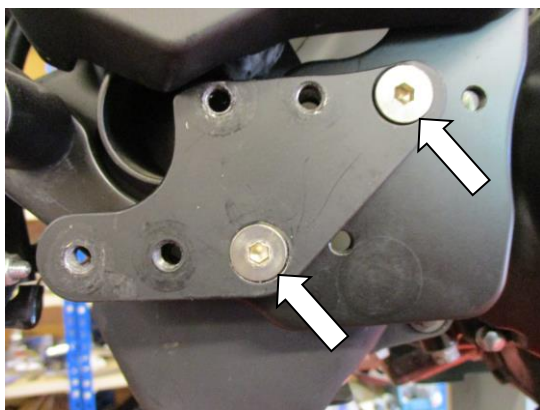


PICTURE 4

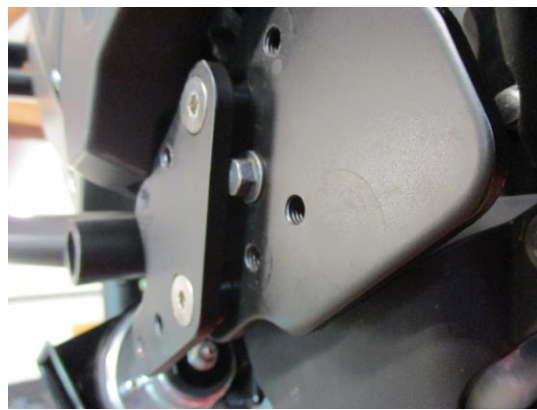
R&G Racing

Unit 1 Shelleys Lane, East Worldham, Alton, Hants GU34 3AQ

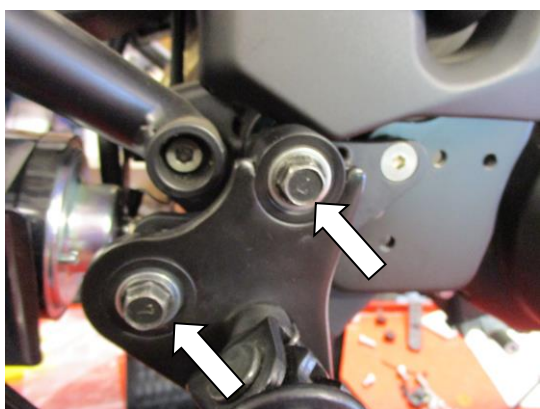
Tel: +44 (0)1420 89007 Fax: +44 (0)1420 87301 www.rg-racing.com Email: info@rg-racing.com



PICTURE 5



PICTURE 6



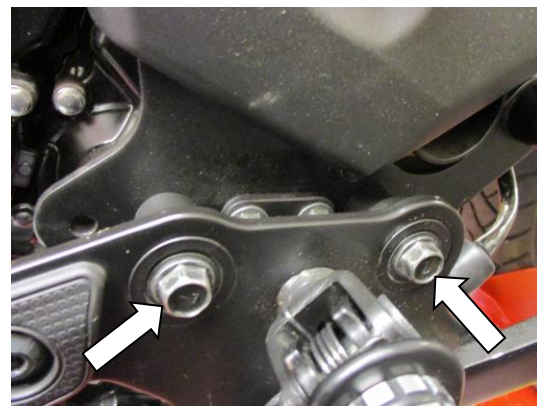
PICTURE 7



PICTURE 8



PICTURE 9

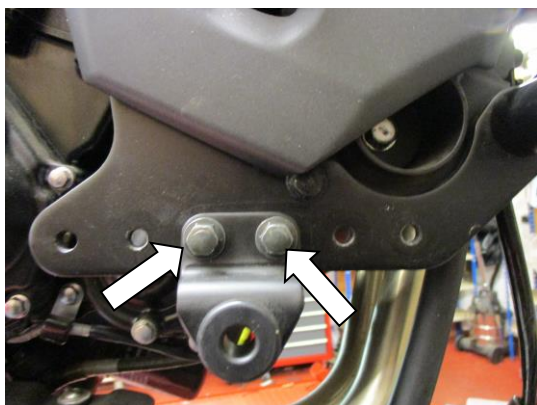


PICTURE 10

R&G Racing

Unit 1 Shelleys Lane, East Worldham, Alton, Hants GU34 3AQ

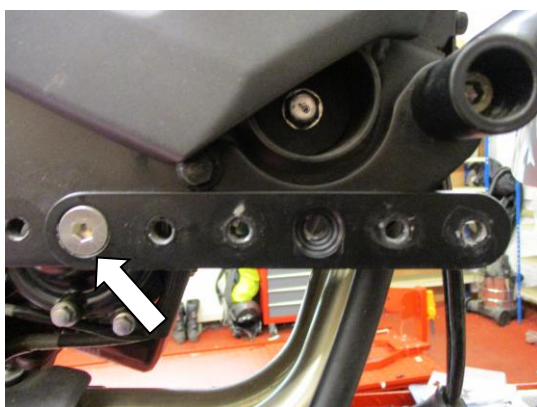
Tel: +44 (0)1420 89007 Fax: +44 (0)1420 87301 www.rg-racing.com Email: info@rg-racing.com



PICTURE 11



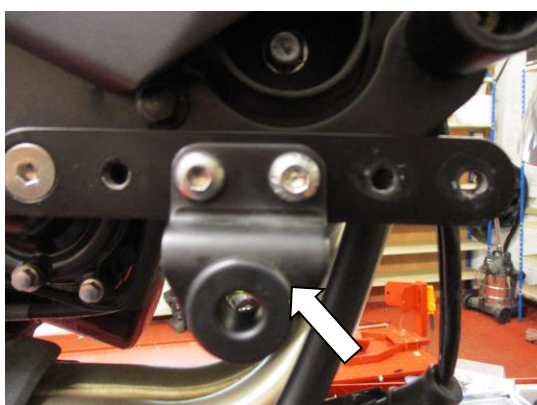
PICTURE 12



PICTURE 13



PICTURE 14



PICTURE 15

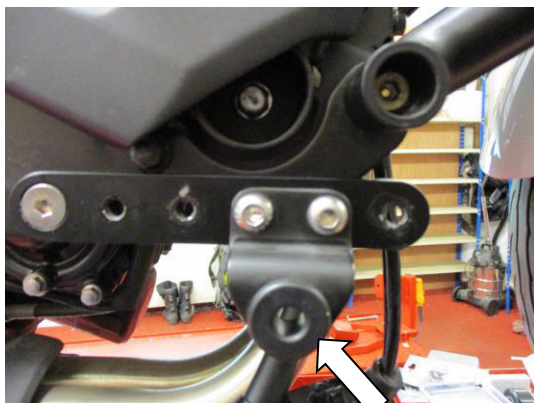


PICTURE 16

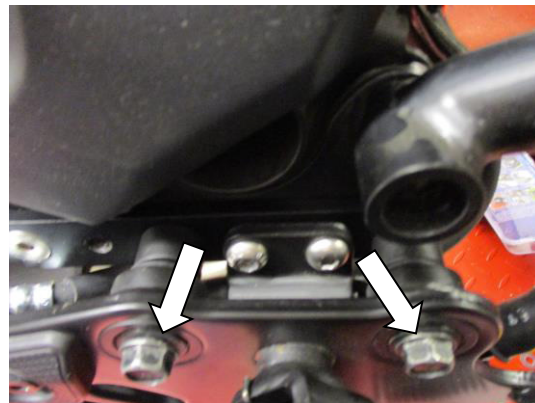
R&G Racing

Unit 1 Shelleys Lane, East Worldham, Alton, Hants GU34 3AQ

Tel: +44 (0)1420 89007 Fax: +44 (0)1420 87301 www.rg-racing.com Email: info@rg-racing.com



PICTURE 17



PICTURE 18

FITTING INSTRUCTIONS

Near side (left side as you sit on bike)

- Remove the two bolts arrowed in picture 1 and gently lower the gear shift/foot rest bracket assembly.
- Place the two M8x20mm long counter-sunk bolts (item 3) into shaped left hand side mounting plate (item 1) as shown in picture 3.
- Place the two mounting plate spacers over the exposed end of the bolts as shown in picture 4.
- Mount this assembly as shown in pictures 5 and 6 (you have a choice of three positions to suit comfort and operation, so you may be required to try all positions to find the optimum).
- Remount and tighten the original gear shift/foot rest bracket assembly (reuse the original spacers) as shown in picture 7 (again you have two different mounting positions to suit comfort and operation).
- Loosen the two lock nuts arrowed in pictures 8 and 9 (the nut in picture 8 is a left hand thread) and remove the original gear shift rod.
- Depending on the required position of the gear shift lever replace the gear shift rod with the longer or shorter new gear shift rods (items 4 or 5) and adjust to suit.
- Please tighten all nuts and bolts and check operation before use.

Off side (right side as you sit on bike)

- Remove the two bolts arrowed in picture 10 and gently lower the brake/foot rest bracket assembly.
- Remove the two bolts arrowed in picture 11 and remove the brake/foot rest bracket assembly support bracket.
- Place one of the M8x12mm long counter-sunk bolts (item 7) into right hand side mounting plate (item 6) as shown in picture 12.
- Mount the plate as shown in picture 13 (you have a choice of two positions to suit comfort and operation, so you may be required to try all positions to find the optimum).
- Depending on which position you select, place one of the M8x20 and one of the M8x12mm long button head bolts (items 8 and 9) into the brake/foot rest bracket assembly support bracket as shown in picture 14 or 16.
- Refit the brake/foot rest bracket assembly support bracket as shown in pictures 15 or 17.
- Remove the two original bolts from the brake/foot rest bracket assembly as arrowed in picture 18 and place the two washers (item 10) onto the bolts and replace as original, through the bracket and spacers.
- Remount and tighten the original brake/foot rest bracket assembly (reuse the original spacers) as shown in picture 18 (again you have two different mounting positions to suit comfort and operation).
- Please tighten all nuts and bolts and check operation before use (please ensure the brake lines are free to operate correctly).