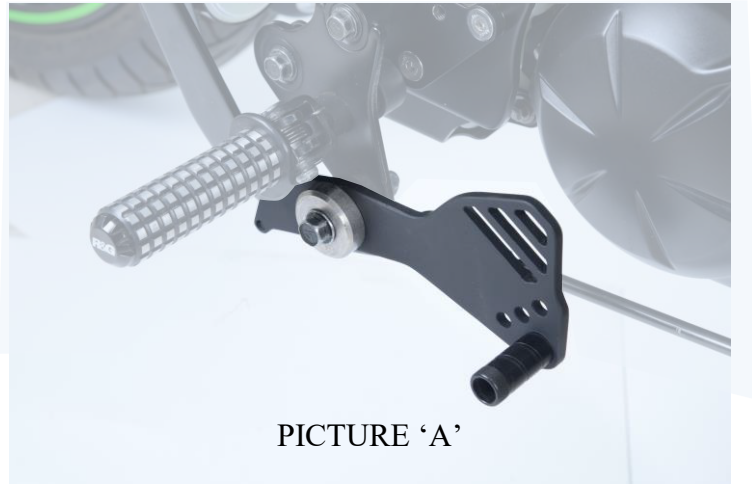




HEELSH0001

**FITTING INSTRUCTIONS FOR HEELSH0001 HEEL SHIFT BRACKET**  
**KAWASAKI VULCAN 'S' 2015-**



PICTURE 'A'

**THIS KIT CONTAINS THE ITEMS PICTURED AND LABELLED BELOW.**  
**DO NOT PROCEED UNTIL YOU ARE SURE ALL PARTS ARE PRESENT.**

Please note that the way the kit is packed does not necessarily represent the way of mounting to the bike

Please note that in cases where kits are packed with rubber washers holding the components onto the bolt – *the rubber washers should be thrown away!*

THE PARTS SHOWN MAY BE REPRESENTATIVE ONLY (FOR CLARITY OF INSTRUCTIONS ONLY)

**Digital copies of these instructions are available to download from [www.rg-racing.com](http://www.rg-racing.com)**

**GENERAL TORQUE SETTINGS**

M4 BOLT = 8Nm  
M5 BOLT = 12Nm  
M6 BOLT = 15Nm  
M8 BOLT = 20Nm  
M10 BOLT = 40Nm

**TOOLS REQUIRED**

- ☒ Set of metric Allen keys to include 5mm A/F.
- ☒ 2x 14mm Spanners.

**R&G**

Unit 1 Shelleys Lane, East Worldham, Alton, Hants GU34 3AQ

Tel: +44 (0)1420 89007 Fax: +44 (0)1420 87301 [www.rg-racing.com](http://www.rg-racing.com) Email: [info@rg-racing.com](mailto:info@rg-racing.com)



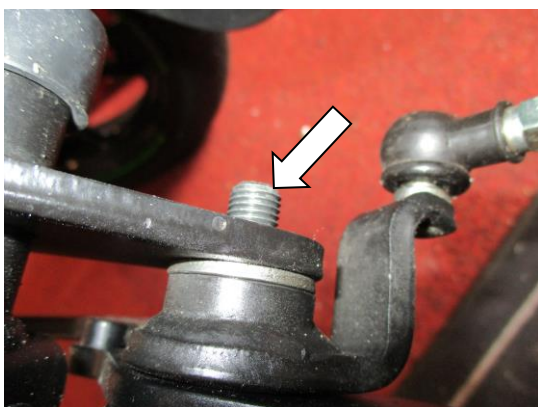
HEELSH0001

Page | 2

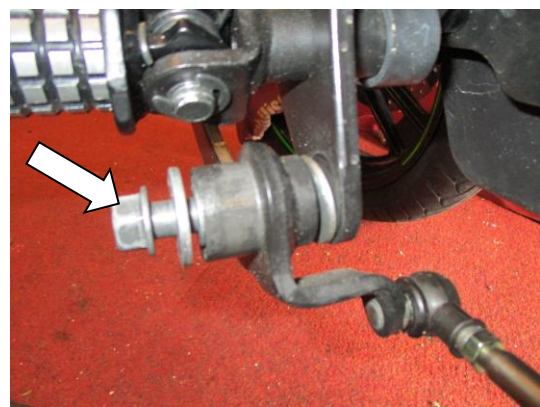


**LEGEND**

- ITEM 1 = SPACER (S0921) (x1)  
ITEM 2 = HEEL SHIFT BRACKET (PLATE 0201) (x1)  
ITEM 3 = TOE-PEG SLIDER (PT0001) (x1)  
ITEM 4 = M6 WASHER 12mm OD (x1)  
ITEM 5 = M6 x 16mm LONG BUTTON HEAD BOLT (x1)



PICTURE 1



PICTURE 2

**R&G**

Unit 1 Shelleys Lane, East Worldham, Alton, Hants GU34 3AQ

Tel: +44 (0)1420 89007 Fax: +44 (0)1420 87301 [www.rg-racing.com](http://www.rg-racing.com) Email: [info@rg-racing.com](mailto:info@rg-racing.com)

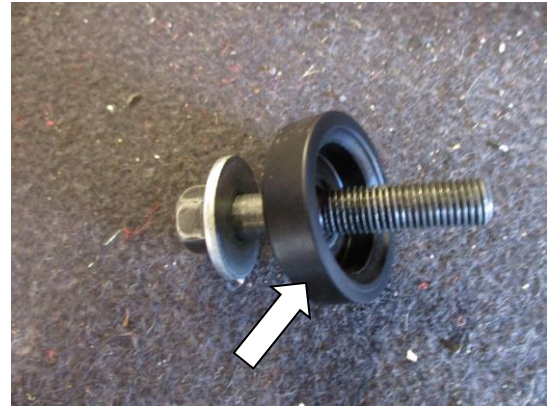


HEELSH0001

Page | 3



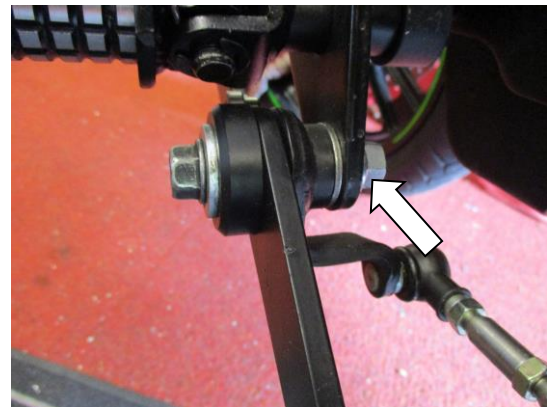
PICTURE 3



PICTURE 4



PICTURE 5



PICTURE 6



PICTURE 7

**R&G**

Unit 1 Shelleys Lane, East Worldham, Alton, Hants GU34 3AQ

Tel: +44 (0)1420 89007 Fax: +44 (0)1420 87301 [www.rg-racing.com](http://www.rg-racing.com) Email: [info@rg-racing.com](mailto:info@rg-racing.com)



## **FITTING INSTRUCTIONS**

- From the kit take the toe-peg slider (Item 3) and heel shift bracket (item 2). Locate the toe-peg slider (item 3) onto the desired mounting hole of the heel shift bracket (item 2) as shown in exploded diagram. Secure the toe-peg slider with an M6 bolt (item 5) and M6 washer (Item 4) as shown in the exploded diagram, Tighten to a recommended torque setting.

Page | 4

### **Near side (left side as you sit on bike)**

- Remove the nut arrowed in picture 1.
- Remove the bolt arrowed in picture 2.
- Place the heel shift bracket (item 2) over the original shift bracket so the pins locate on both side of the bracket as shown in pictures 3 and 7.
- Place the spacer (item 1) over the original shift bracket's boss, secure using the original bolt as shown in picture 4.
- Offer the assembly onto the motorcycle and tighten the bolt as shown in picture 5 (please ensure the lever operates correctly).
- Fit and tighten the original nut as shown in picture 6.
- Tighten all bolts and nuts, check operation before riding. You may have to loosen the main bolt to allow correct operation and re-tighten the lock nut.
- Please tighten all nuts and bolts and check operation before use.

ISSUE 2 03/01/2017 (HH)

### **CONSUMER NOTICE**

The catalogue description and any exhibition of samples are only broad indications of the Products and R&G may make design changes which do not diminish their performance or visual appeal and supplying them in such state shall conform to the order. The Buyer acknowledges no representation or warranty (other than as to title) has been given or will apply to the Products other than those in R&G's order or confirmation and the Buyer confirms it has chosen the Products as being of merchantable quality and suitable for its particular purposes. Where R&G fits the Products or undertakes other services it shall exercise reasonable skill and care and rectify any fault free of charge unless the workmanship has been disturbed. The Buyer is responsible for ensuring that the warranty on the motorcycle is not affected by the fitting of the Products. On return of any defective Products R&G shall at its option either supply a replacement or refund the purchase money but shall not be liable if the Products have been modified or used or maintained otherwise than in accordance with R&G's or manufacturer's instructions and good engineering practice or if the defect arises from accident or neglect. Other than identified above and subject to R&G not limiting its liability for causing death and personal injury, it shall not be liable for indirect or consequential loss and otherwise its liability shall be limited to the amounts paid by the Buyer for the Products or the fitting or service concerned. These terms do not affect the Buyer's statutory rights.

### **R&G RETURNS POLICY (NON-FAULTY GOODS)**

Returns must be pre-authorised (if not pre-authorised the return will be rejected). Goods may only be returned direct to us if they were purchased direct from us (customer must prove if necessary). Otherwise to be returned to original vendor. Goods must be in re-sellable condition, in the opinion of R&G. All returns are subject to a 25% restocking and handling fee (25% of the gross value exc. P&P – at the prevailing price at time of purchase). The customer must pay any and all carriage charges. No returns of discontinued products, unless within 14 days of purchase. This policy does not affect your statutory rights and does not refer to faulty goods.

## **R&G**

Unit 1 Shelleys Lane, East Worldham, Alton, Hants GU34 3AQ

Tel: +44 (0)1420 89007 Fax: +44 (0)1420 87301 [www.rg-racing.com](http://www.rg-racing.com) Email: [info@rg-racing.com](mailto:info@rg-racing.com)