



LP0228

FITTING INSTRUCTIONS FOR LP0228SS LICENCE PLATE BRACKET
MV AGUSTA F4 RC 2015-WITH SC PROJECT RACE
EXHAUST ONLY

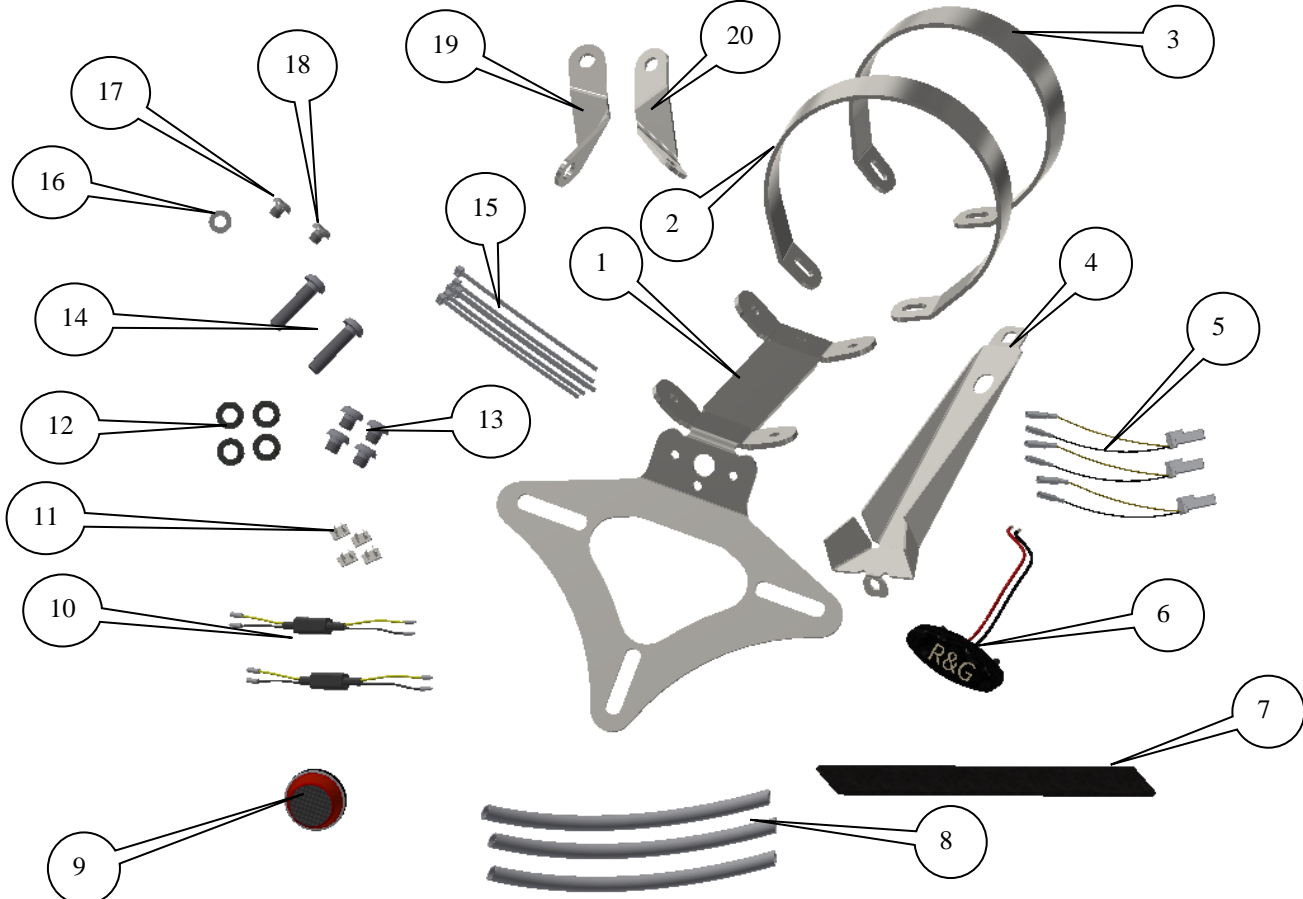
Page | 1



THIS KIT CONTAINS THE ITEMS PICTURED AND LABELLED BELOW.
DO NOT PROCEED UNTIL YOU ARE SURE ALL PARTS ARE PRESENT.

Please note that the way the kit is packed does not necessarily represent the way of mounting to the bike

THE PARTS SHOWN MAY BE REPRESENTATIVE ONLY (FOR CLARITY OF INSTRUCTIONS ONLY)



Unit 1, Shelley's Lane, East Wottonham, Aton, Hampshire, GU54 5AQ
Tel: +44 (0)1420 89007 Fax: +44 (0)1420 87301 www.rg-racing.com Email: info@rg-racing.com



LP0228

LEGEND

- ITEM 1 = LICENCE PLATE MOUNTING BRACKET (TB0228 PART 1) (x1).
ITEM 2 = REAR MOUNTING BRACKET (TB0228 PART 2) (x1).
ITEM 3 = FRONT MOUNTING BRACKET (TB0228 PART 3) (x1).
ITEM 4 = COVER BRACKET (TB0228 PART 4) (x1).
ITEM 5 = LICENCE PLATE ILLUMINATOR /// INDICATOR CONNECTORS (CON0014) (x3).
ITEM 6 = LICENCE PLATE ILLUMINATOR ASSEMBLY (LA0002) (x1).
ITEM 7 = 650mm LENGTH OF HEAT RESISTANT SILICON (SRS007) (x1).
ITEM 8 = 350mm LENGTHS OF HEAT SHIELD (x3).
ITEM 9 = REFLECTOR (REFL 1) (x1).
ITEM 10 = MINI INDICATOR RESISTORS (RGR0001) (x2).
ITEM 11 = SELF ADHESIVE CABLE CLIPS (x4).
ITEM 12 = M6 WASHERS (x4).
ITEM 13 = M6x6mm BUTTON HEAD BOLTS (x4).
ITEM 14 = M6x25mm BUTTON HEAD BOLTS (x2).
ITEM 15 = CABLE TIES (CT0075) (x8).
ITEM 16 = M5 WASHER (x1).
ITEM 17 = M5x5mm BUTTON HEAD BOLT (x1).
ITEM 18 = M5x6mm CAP HEAD BOLT (x1).
ITEM 19 = RHS MINI INDICATOR MOUNTING BRACKET (TB0228 PART 6) (x1).
ITEM 20 = RHS MINI INDICATOR MOUNTING BRACKET (TB0228 PART 5) (x1).

Page | 2

Please note that in cases where kits are packed with rubber washers holding the components onto the bolt – *the rubber washers should be thrown away!*

TOOLS REQUIRED

- Set of metric Allen keys.
 - Metric Socket set.
 - Phillips driver.
- Small amount of super glue.
- Thick plastic sheet or towel.
- Large jubilee clip that fits around the end can.
 - Roll of electrical tape.



PICTURE 1



PICTURE 2

R&G Racing
Unit 1, Shelley's Lane, East Worldham, Alton, Hampshire, GU34 3AQ
Tel: +44 (0)1420 89007 Fax: +44 (0)1420 87301 www.rg-racing.com Email: info@rg-racing.com



LP0228



PICTURE 3



PICTURE 4



PICTURE 5



PICTURE 6



PICTURE 7



PICTURE 8



LP0228

Page | 4



PICTURE 9



PICTURE 10



PICTURE 11



PICTURE 12



PICTURE 13



PICTURE 14

R&G Racing
Unit 1, Shelley's Lane, East Worldham, Alton, Hampshire, GU34 3AQ
Tel: +44 (0)1420 89007 Fax: +44 (0)1420 87301 www.rg-racing.com Email: info@rg-racing.com



LP0228

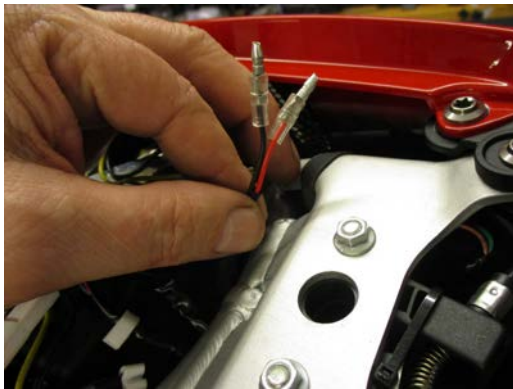
Page | 5



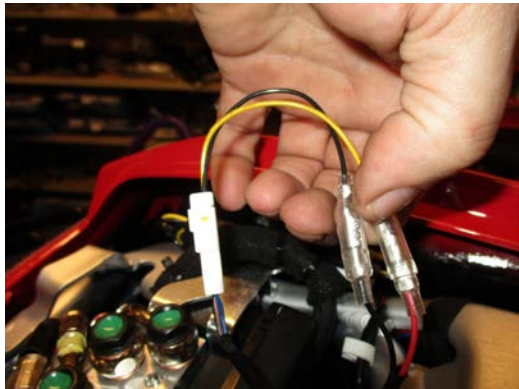
PICTURE 15



PICTURE 16



PICTURE 17



PICTURE 18



PICTURE 19



PICTURE 20



LP0228

Page | 6



PICTURE 21



PICTURE 22

FITTING INSTRUCTIONS

- There is some prep work that should be done before starting, as listed below.
- Take the length of heat resistant silicon (item 7) and line both the front and rear mounting brackets (items 2 and 3) as shown in picture 1 (a small amount of adhesive will aid to hold in place during fitment).
- Take the length of heat resistant silicon (item 7) and line the bottom face of the licence plate bracket (item 1) shown in picture 2 (a small amount of adhesive will aid to hold in place during fitment).
- wrap a suitable sheet of plastic or towel around the end can as shown in picture 3 to protect the end can during fitment.
- To fit the R&G tail tidy, remove the pillion seat using the key.
- Take the front mounting bracket (item 3 (it is the smaller of the two) and gently spread and offer over the protective cover as shown in picture 4 and carefully position towards the smaller end of the end can as shown in picture 5.
- Repeat this process for the rear mounting bracket (item 2) as shown in picture 6.
- Line the jubilee clip with electrical tape as shown in picture 7 to protect the end can.
- Take the R&G licence plate mounting bracket (item 1) and fit the R&G licence plate illuminator (item 6) to the assembly, as shown in pictures 8 and 9. Use a small amount of superglue to stick the light shroud in position. Fit one length of heat shield (item 8) to the wires and tighten the nuts on the rear, as shown in picture 9.
- Offer this assembly into position as shown in picture 10 and use two of the smaller M6 button head bolts (item 13) with the M 6 washers (item 12) to hold in position (you will only be able to fit one bolt per bracket at present).
- Carefully remove the protective sheet.
- Use the jubilee clip to pull one of the mounting brackets in to line up with the main bracket as shown in picture 11 and secure in the correct position use one of the remaining M6 button head bolts (item 13) and washer (item 12).
- Use the same jubilee clip to pull the remaining mounting bracket in to line up with the main bracket as shown in picture 12 and secure in the correct position use the remaining M6 button head bolt (item 13) and washer (item 12).
- Feed the licence plate illuminator wiring through the hole in the cover bracket (item 4) and offer into position as shown in picture 13.

R&G Racing

Unit 1, Shelley's Lane, East Worldham, Alton, Hampshire, GU34 3AQ

Tel: +44 (0)1420 89007 Fax: +44 (0)1420 87301 www.rg-racing.com Email: info@rg-racing.com



LP0228

Page | 7

- Use the M5 cap head bolt (item 18) to secure in position as shown in picture 14.
- Use the M5 button head bolt (item 17) with the M5 washer (item 16) to secure in position as shown in picture 15.
- Feed the licence plate illuminator wiring through the hole in the under-tray and fix away from the end can using the supplied cable clips (item 11) as shown in pictures 16 and 17.
- Connect the licence plate illuminator to the wiring loom using one of the connectors (item 5) as shown in picture 18.

If fitting R&G mini indicators (R&G product code RG371=LED or RG372 = Aero LED)

- Remove the two bolts arrowed in picture 19.
- Fit the indicators of choice (as listed above) to the indicator mounting brackets (items 19 and 20) as shown in picture 20. Please use the remaining heat shield (item 8) to protect the wiring. **(Please note you will have to use the in-line resistors (item 10) to correct the flash rate as shown in picture 21.**
- **Secure these assemblies in position as shown in picture 22 using the two longer M6 bolts (item 14) please ensure the indicator are visible when in operation.**
- **Connect to the original wiring loom using the remaining connectors (item 5).**
- **Use the supplied cable ties (item 15) to tidy and secure the wiring.**
- Ensure the tail tidy is securely mounted and all bolts are fully tightened.
- Re-fit the pillion seat.
- Re-fit the licence plate (it may require drilling).
- Depending on local laws, attach enclosed reflector (item 15) in an appropriate location.
- Test the license plate illuminator and all lights before riding.
- **IMPORTANT: IF FITTING A FULL-SIZE LICENCE PLATE AND PLACING IT FAR DOWN ON THE LICENCE PLATE HANGER, THERE IS A SMALL CHANCE OF THE LICENCE PLATE HITTING THE BACK WHEEL UNDER HEAVY LOAD AND OVER LARGE BUMPS IN THE ROAD. IT IS YOUR RESPONSIBILITY TO CHECK FOR THIS POSSIBILITY AND TAKE AVOIDING ACTION. FAILURE TO CHECK THIS COULD RESULT IN SERIOUS INJURY.**
- **Please test the indicators, rear light and licence plate illuminator before riding.**

Digital copies of these instructions are available to download from www.rg-racing.com

GENERAL TORQUE SETTINGS

M4 BOLT = 8Nm
M5 BOLT = 12Nm
M6 BOLT = 15Nm
M8 BOLT = 20Nm
M10 BOLT = 40Nm

ISSUE 1 14/07/2017 (NSY)

CONSUMER NOTICE

The catalogue description and any exhibition of samples are only broad indications of the Products and R&G may make design changes which do not diminish their performance or visual appeal and supplying them in such state shall conform to the order. The Buyer acknowledges no representation or warranty (other than as to title) has been given or will apply to the Products other than those in R&G's order or confirmation and the Buyer confirms it has chosen the Products as being of merchantable quality and suitable for its particular purposes. Where R&G fits the Products or undertakes other services it shall exercise reasonable

R&G Racing

Unit 1, Shelley's Lane, East Worldham, Alton, Hampshire, GU34 3AQ

Tel: +44 (0)1420 89007 Fax: +44 (0)1420 87301 www.rg-racing.com Email: info@rg-racing.com



LP0228

skill and care and rectify any fault free of charge unless the workmanship has been disturbed. The Buyer is responsible for ensuring that the warranty on the motorcycle is not affected by the fitting of the Products. On return of any defective Products R&G shall at its option either supply a replacement or refund the purchase money but shall not be liable if the Products have been modified or used or maintained otherwise than in accordance with R&G's or manufacturer's instructions and good engineering practice or if the defect arises from accident or neglect. Other than identified above and subject to R&G not limiting its liability for causing death and personal injury, it shall not be liable for indirect or consequential loss and otherwise its liability shall be limited to the amounts paid by the Buyer for the Products or the fitting or service concerned. These terms do not affect the Buyer's statutory rights.

Page | 8

R&G RACING RETURNS POLICY (NON-FAULTY GOODS)

Returns must be pre-authorized (if not pre-authorized the return will be rejected). Goods may only be returned direct to us if they were purchased direct from us (customer must prove if necessary). Otherwise to be returned to original vendor. Goods must be in re-sellable condition, in the opinion of R&G Racing. All returns are subject to a 25% restocking and handling fee (25% of the gross value exc. P&P – at the prevailing price at time of purchase). The customer must pay any and all carriage charges. No returns of discontinued products, unless within 14 days of purchase. This policy does not affect your statutory rights and does not refer to faulty goods.

R&G Racing

Unit 1, Shelley's Lane, East Worldham, Alton, Hampshire, GU34 3AQ

Tel: +44 (0)1420 89007 Fax: +44 (0)1420 87301 www.rg-racing.com Email: info@rg-racing.com



LP0228