



**FITTING INSTRUCTIONS FOR FE0337**  
**LICENCE PLATE BRACKET**



**This kit contains the items pictured and labelled over page.**  
**Some parts may be shown for clarity of instructions only.**  
**Do not proceed until you are sure all parts are present.**  
**Please read all instructions before proceeding.**

**IF IN ANY DOUBT WHEN FITTING OUR PRODUCTS, CONSULT ONE OF OUR DEALERS**  
**OR HAVE FITTED BY A QUALIFIED TECHNICIAN.**

Please note that the way the kit is packed does not necessarily represent the way of mounting to the bike.

In the event of rubber washers being used to hold components onto bolts, these rubber washers can be thrown away.

**DIGITAL COPIES OF THESE INSTRUCTIONS ARE AVAILABLE FROM**

**[WWW.RG-RACING.COM](http://WWW.RG-RACING.COM)**

R&G

Unit 1, Shelley's Lane, East Worldham, Alton, Hampshire, GU34 3AQ  
Tel: +44 (0)1420 89007 Fax: +44 (0)1420 87301 [www.rg-racing.com](http://www.rg-racing.com) Email: [info@rg-racing.com](mailto:info@rg-racing.com)



<b><u>TOOLS REQUIRED</u></b>	<b><u>GENERAL TORQUE SETTINGS</u></b>
<ul style="list-style-type: none"> <li>• Set of metric Allen keys (range from 3 to 6mm).</li> <li>• Set of metric sockets and ratchet (range from 8 to 14mm).</li> <li>• Small flat head screwdriver.</li> <li>• Long Phillips screwdriver.</li> </ul>	<p>M4 BOLT = 8Nm</p> <p>M5 BOLT = 12Nm</p> <p>M6 BOLT = 15Nm</p> <p>M8 BOLT = 20Nm</p> <p>M10 BOLT = 40Nm</p> <p>M12 BOLT = 40Nm</p>

### **LEGEND**

<b>ITEM No.</b>	<b>DESCRIPTION</b>	<b>QTY</b>
ITEM 1	FE0337 PART 1	1
ITEM 2	FE0337 PART 2	1
ITEM 3	RG0038 (RUBBER GASKET)	2
ITEM 4	LA0002 (LICENSE PLATE ILLUMINATOR)	1
ITEM 5	M6 x 1.00 x 6mm BUTTON HEAD BOLT	2
ITEM 6	M5 x 0.80 x 12mm COUNTERSINK BOLT	2
ITEM 7	M6 x 12mm OD WASHER	2
ITEM 8	M5 x 10mm OD WASHER	2
ITEM 9	M5 NYLOC NUT	2
ITEM 10	FS0003BK (100mm SELF ADHESIVE FOAM)	1
ITEM 11	666-896 (200mm LENGTH OF HEAT-SHRINK)	1
ITEM 12	CON0014 (LICENSE PLATE ILLUMINATOR CONNECTOR)	1
ITEM 13	CT75 (2.5mm WIDE x 75mm LONG CABLE TIE)	3
ITEM 14	REFL 3 (REFLECTOR)	1

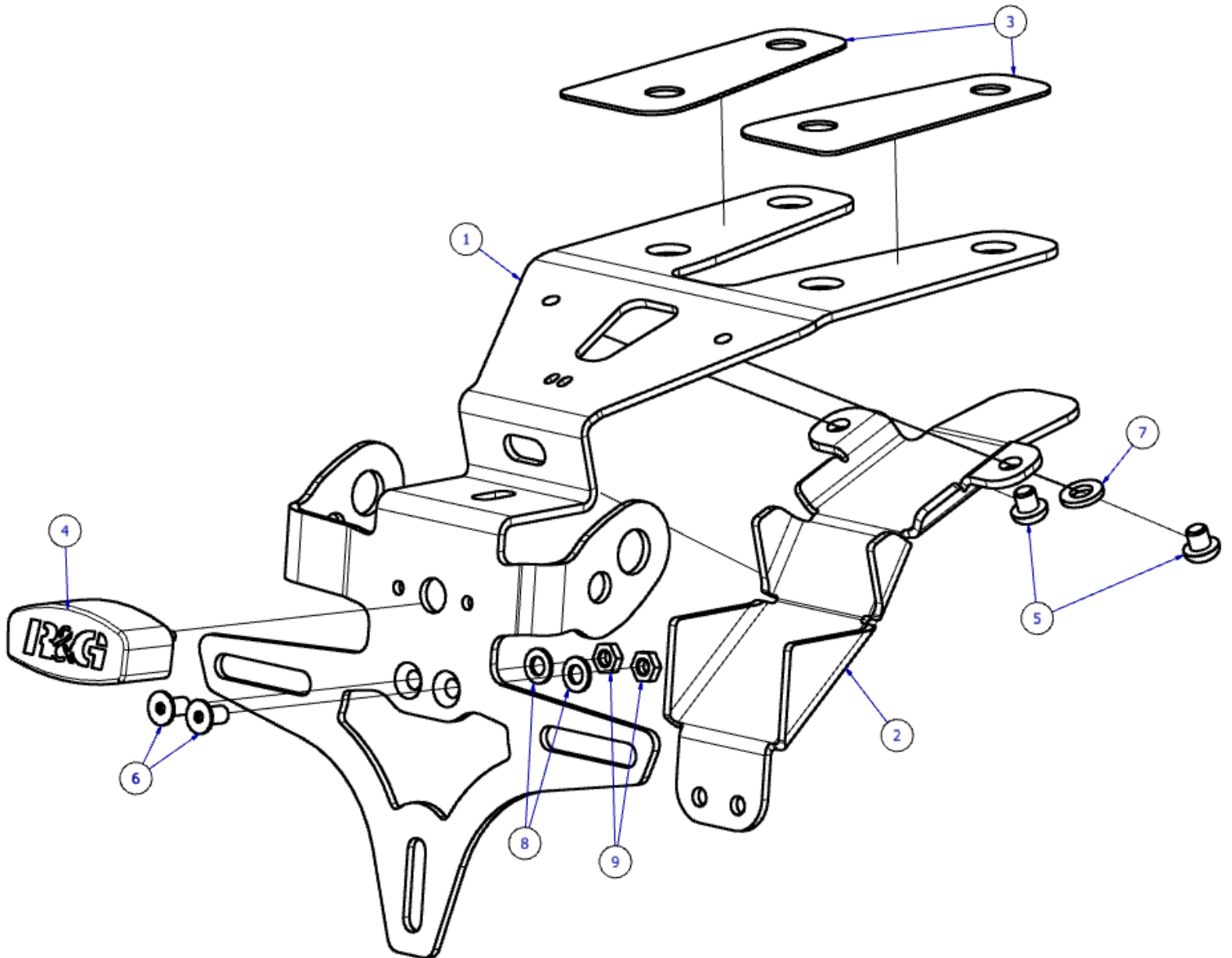
R&G

Unit 1, Shelley's Lane, East Worldham, Alton, Hampshire, GU34 3AQ

Tel: +44 (0)1420 89007 Fax: +44 (0)1420 87301 [www.rg-racing.com](http://www.rg-racing.com) Email: [info@rg-racing.com](mailto:info@rg-racing.com)



**ASSEMBLY DIAGRAM**



R&G

Unit 1, Shelley's Lane, East Worldham, Alton, Hampshire, GU34 3AQ

Tel: +44 (0)1420 89007 Fax: +44 (0)1420 87301 [www.rg-racing.com](http://www.rg-racing.com) Email: [info@rg-racing.com](mailto:info@rg-racing.com)



**FITTING PICTURES**



**Picture 1**



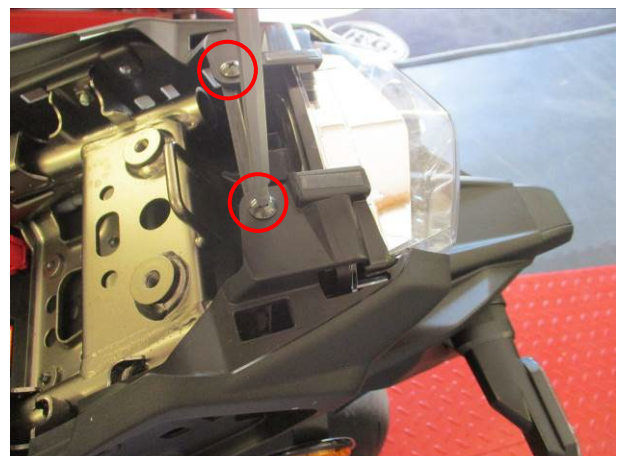
**Picture 2**



**Picture 3**



**Picture 4**



R&G



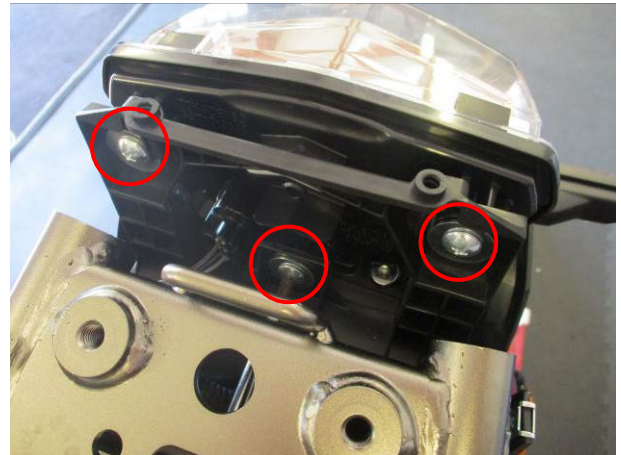


**Picture 5**

**Picture 6**



**Picture 7**



**Picture 8**



**Picture 9**



**Picture 10**



**Picture 11**

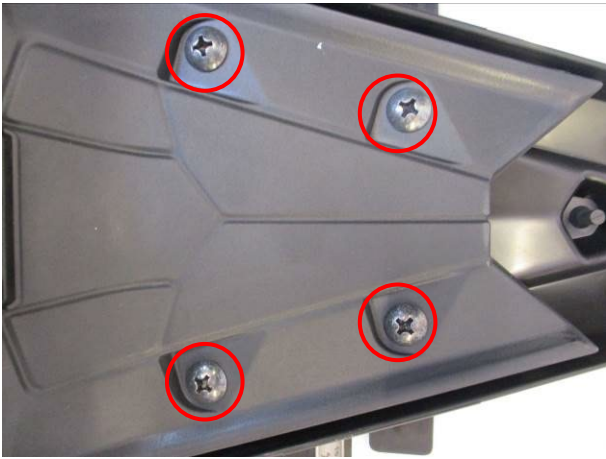


**Picture 12**

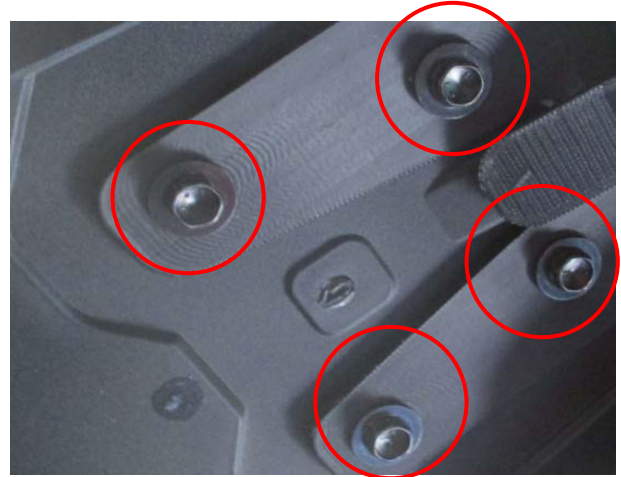
R&G

Unit 1, Shelley's Lane, East Worldham, Alton, Hampshire, GU34 3AQ

Tel: +44 (0)1420 89007 Fax: +44 (0)1420 87301 [www.rg-racing.com](http://www.rg-racing.com) Email: [info@rg-racing.com](mailto:info@rg-racing.com)



Picture 13



Picture 14

## FITTING INSTRUCTIONS

### Removal of OEM license plate bracket

- To begin with, remove the pillion seat by using the key slot as shown in **Picture 1**.
- As shown in **Picture 2**, remove the 4 x bolts and 2 x clips in order to remove the OEM grab rail.
- Carefully remove the black fairing panel shown in **Picture 3** by gently prying with a flat head screw driver for both the LHS and RHS.
- Remove the 3 x highlighted bolts from the LHS and 3 x highlighted cross head screws as shown in **Picture 3**, repeat this for the RHS as shown in **Picture 4**.
- Lift away the plastic trim as shown in **Picture 5**.
- Remove the black screws as highlighted in **Picture 6**.
- Remove the black screws as highlighted in **Picture 7**, now you can remove both LHS and RHS tail pieces.
- To remove the OEM tail light, which gives you access to 2 x mounting bolts, remove the 3 x highlighted screws shown in **Picture 8**, this will require a long Phillips screwdriver.
- Unplug the connector on the back of the brake light highlighted in **Picture 9**.
- Disconnect the indicator connectors and license plate illuminator as shown in **Picture 12**, indicator connectors are red and black, license plate illuminator connector is white.
- Now the bolts shown in **Picture 10** and **Picture 11** can be removed to allow the OEM tail bracket to be separated from the bike.

R&G

Unit 1, Shelley's Lane, East Worldham, Alton, Hampshire, GU34 3AQ

Tel: +44 (0)1420 89007 Fax: +44 (0)1420 87301 [www.rg-racing.com](http://www.rg-racing.com) Email: [info@rg-racing.com](mailto:info@rg-racing.com)



- Once completed removed from the bike, the OEM indicators are made accessible by removed the 4 x screws shown in **Picture 13**.

### Installation of R&G Fender Eliminator

- Assemble **FE0337** as shown in the **Assembly Diagram** shown above.
- Connect CON0014 to the bike and the provided licence plate illuminator, ensuring all wires are covered with heat shrink provided.
- Present the built R&G Fender Eliminator up to the bike with the OEM Indicators attached re-using the OEM indicator mounting nut and bolt.
- Thread the cables from the indicator and license plate illuminator through the correct hole on the bike under the pillion seat.
- Re-use the OEM tail bracket bolts which are highlighted in **Picture 14**.
- Tidy the cables up using the provided cover plate (**Item 2**).
- Apply self-adhesive foam (**Item 10**) to the inside of the cover plate if preferred (**Item 2**).
- Check all components are secure, and that indicators along with license plate illuminator are operating correctly before riding.

*Ensure that the wiring does not foul or become trapped during operation.*

**IMPORTANT: IF FITTING A FULL-SIZE LICENCE PLATE AND PLACING IT FAR DOWN ON THE LICENCE PLATE HANGER, THERE IS A SMALL CHANCE OF THE LICENCE PLATE HITTING THE BACK WHEEL UNDER HEAVY LOAD AND OVER LARGE BUMPS IN THE ROAD. IT IS YOUR RESPONSIBILITY TO CHECK FOR THIS POSSIBILITY AND TAKE AVOIDING ACTION. FAILURE TO CHECK THIS COULD RESULT IN SERIOUS INJURY.**

ISSUE 1 - 12/09/2021 - (AO)

### CONSUMER NOTICE

The catalogue description and any exhibition of samples are only broad indications of the Products and R&G may make design changes which do not diminish their performance or visual appeal and supplying them in such state shall conform to the order. The Buyer acknowledges no representation or warranty (other than as to title) has been given or will apply to the Products other than those in R&G's order or confirmation and the Buyer confirms it has chosen the Products as being of merchantable quality and suitable for its particular purposes. Where R&G fits the Products or undertakes other services it shall exercise reasonable skill and care and rectify any fault free of charge unless the workmanship has been disturbed. The Buyer is responsible for ensuring that the warranty on the motorcycle is not affected by the fitting of the Products. On return of any defective Products R&G shall at its option either supply a replacement or refund the purchase money but shall not be liable if the Products have been modified or used or maintained otherwise than in accordance with R&G's or manufacturer's instructions and good engineering practice or if the defect arises from accident or neglect. Other than identified above and subject to R&G not limiting its liability for causing death and personal injury, it shall not be liable for indirect or consequential loss and otherwise its liability shall be limited to the amounts paid by the Buyer for the Products or the fitting or service concerned. These terms do not affect the Buyer's statutory rights.

### R&G RACING RETURNS POLICY (NON-FAULTY GOODS)

Returns must be pre-authorized (if not pre-authorized the return will be rejected). Goods may only be returned direct to us if they were purchased direct from us (customer must prove if necessary). Otherwise to be returned to original vendor. Goods must be in re-sellable condition, in the opinion of R&G Racing. All returns are subject to a 25% restocking and handling fee (25%

R&G

Unit 1, Shelley's Lane, East Worldham, Alton, Hampshire, GU34 3AQ

Tel: +44 (0)1420 89007 Fax: +44 (0)1420 87301 [www.rg-racing.com](http://www.rg-racing.com) Email: [info@rg-racing.com](mailto:info@rg-racing.com)