



**FITTING INSTRUCTIONS FOR LP0301BK LICENCE PLATE BRACKET**  
**TRIUMPH SCRAMBLER 1200 XC + XE 2019- + 2021-**



**This kit contains the items pictured and labelled over page.**  
**Some parts may be shown for clarity of instructions only.**  
**Do not proceed until you are sure all parts are present.**  
**Please read all instructions before proceeding.**

**IF IN ANY DOUBT WHEN FITTING OUR PRODUCTS, CONSULT ONE OF OUR DEALERS**  
**OR HAVE FITTED BY A QUALIFIED TECHNICIAN.**

Please note that the way the kit is packed does not necessarily represent the way of mounting to the bike.

In the event of rubber washers being used to hold components onto bolts, these rubber washers can be thrown away.

**DIGITAL COPIES OF THESE INSTRUCTIONS ARE AVAILABLE FROM**

**[WWW.RG-RACING.COM](http://WWW.RG-RACING.COM)**

R&G

Unit 1, Shelley's Lane, East Worldham, Alton, Hampshire, GU34 3AQ  
Tel: +44 (0)1420 89007 Fax: +44 (0)1420 87301 [www.rg-racing.com](http://www.rg-racing.com) Email: [info@rg-racing.com](mailto:info@rg-racing.com)



<b><u>TOOLS REQUIRED</u></b>	<b><u>GENERAL TORQUE SETTINGS</u></b>
<ul style="list-style-type: none"> <li>• Set of metric Hex keys to include 3mm &amp; 4mm.               <ul style="list-style-type: none"> <li>• T30 Torx head tool</li> </ul> </li> <li>• Set of metric sockets and wrench. To include 6, 8 &amp; 10mm.               <ul style="list-style-type: none"> <li>• 8mm &amp; 10mm spanners.</li> <li>• Phillips screwdriver.</li> </ul> </li> </ul>	M4 BOLT = 8Nm M5 BOLT = 12Nm M6 BOLT = 15Nm M8 BOLT = 20Nm M10 BOLT = 40Nm M12 BOLT = 40Nm

### **LEGEND**

<b>ITEM NUMBER</b>	<b>DESCRIPTION</b>	<b>QTY</b>
ITEM 1	TB0301 LICENCE PLATE BRACKET	1
ITEM 2	REPLACEMENT UNDERTRAY	1
ITEM 3	M6x1.00x25mm BUTTON HEAD BOLT	2
ITEM 4	M6x1.00x30mm BUTTON HEAD BOLT	2
ITEM 5	M6x1.00x35mm BUTTON HEAD BOLT	2
ITEM 6	M6x1.00 NYLOC NUT	4
ITEM 7	M6x19MM O/D WASHER	6
ITEM 8	M6x14MM O/D WASHER	2
ITEM 9	LA0002 TAIL LIGHT ASSEMBLY	1
ITEM 10	CON0046 MINI INDICATOR WIRING ADAPTOR	2
ITEM 11	CON0014 LICENCE PLATE LIGHT WIRING ADAPTOR	1
ITEM 12	6MM HEAT SHRINK 150MM	4
ITEM 13	IWC0002 INDICATOR WIRING COVERS	2
ITEM 14	INDICATOR BLANKING GROMMET	2
ITEM 15	SELF ADHESIVE CABLE CLIP	4
ITEM 16	2.5MM CABLE TIE	2
ITEM 17	REFLECTOR	1

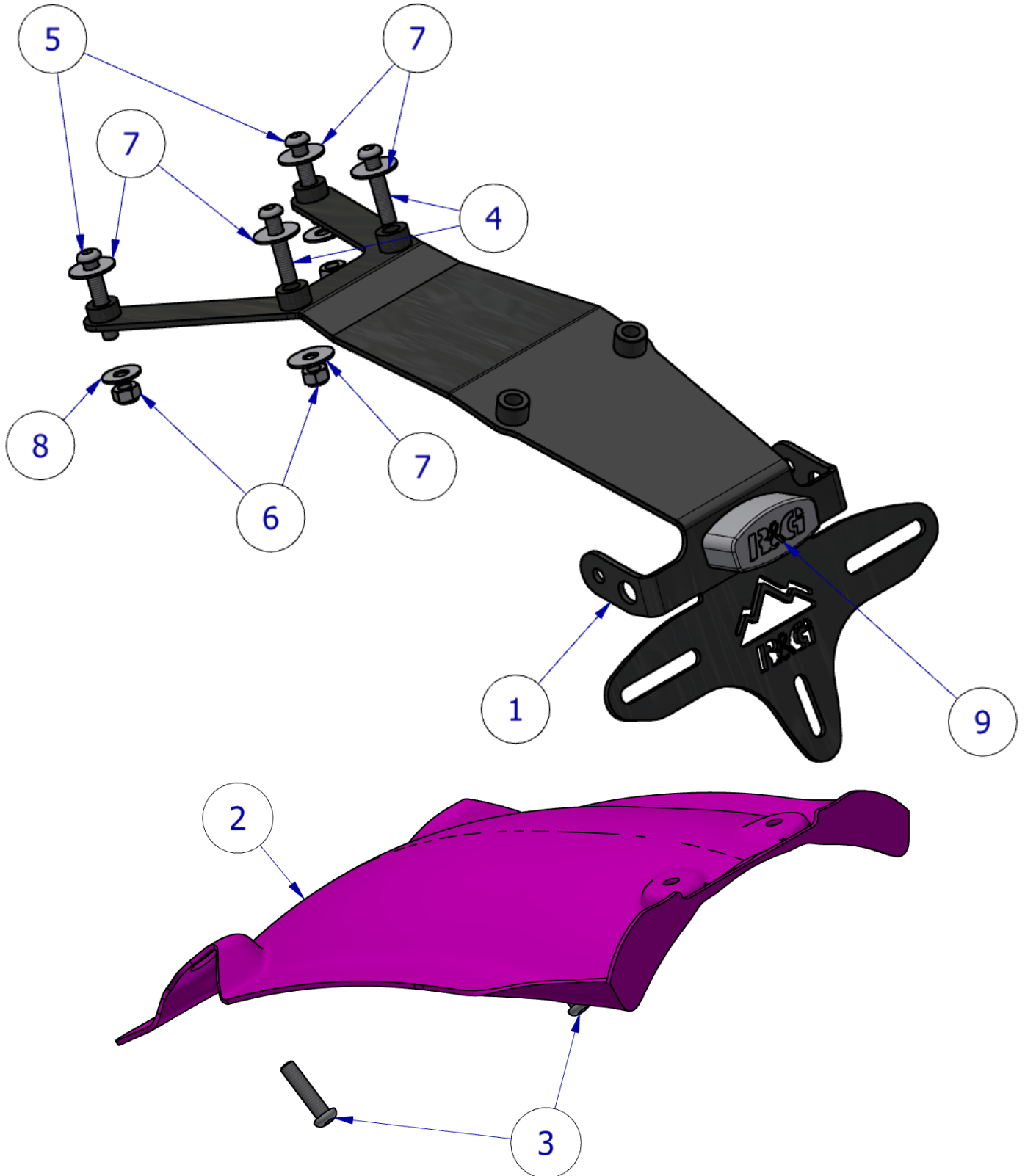
R&amp;G

Unit 1, Shelley's Lane, East Worldham, Alton, Hampshire, GU34 3AQ

Tel: +44 (0)1420 89007 Fax: +44 (0)1420 87301 [www.rg-racing.com](http://www.rg-racing.com) Email: [info@rg-racing.com](mailto:info@rg-racing.com)



**ASSEMBLY DIAGRAM 1**



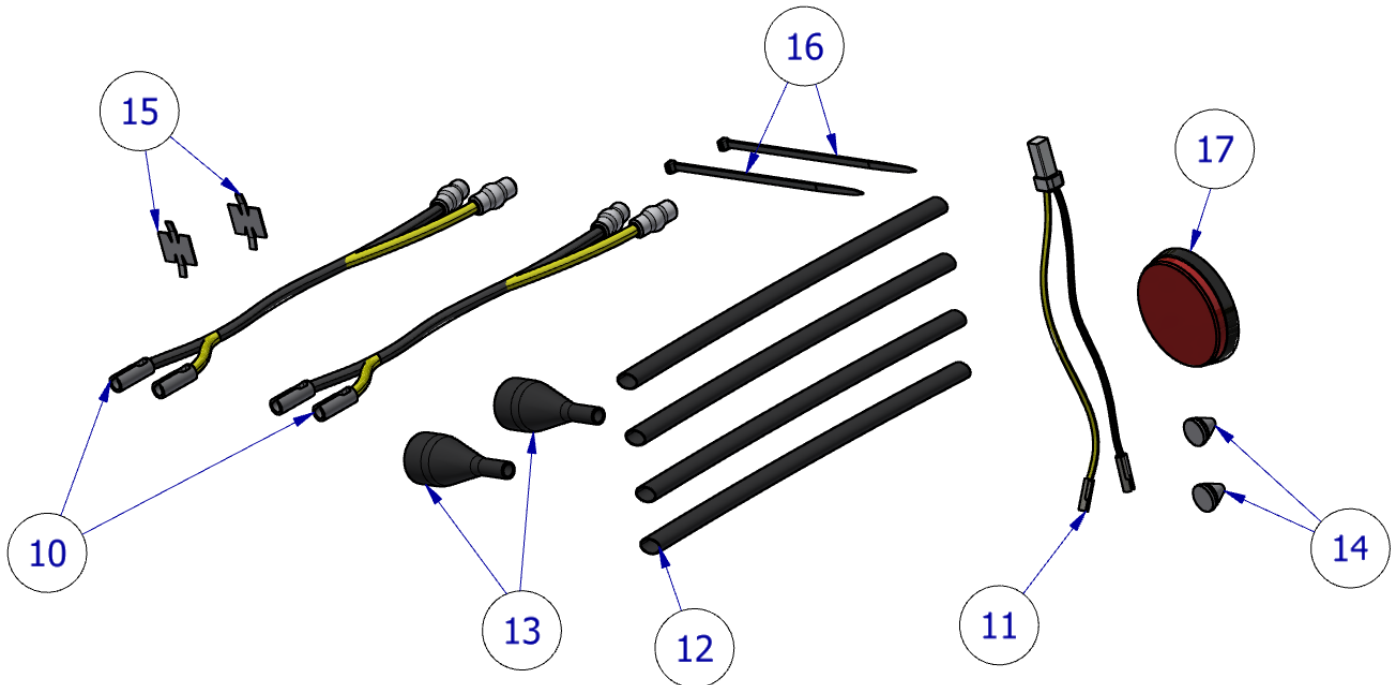
R&G

Unit 1, Shelley's Lane, East Worldham, Alton, Hampshire, GU34 3AQ

Tel: +44 (0)1420 89007 Fax: +44 (0)1420 87301 [www.rg-racing.com](http://www.rg-racing.com) Email: [info@rg-racing.com](mailto:info@rg-racing.com)



**Assembly Diagram 2 – ANCILLARY COMPONENTS**



**FITTING PICTURES**



Picture 1

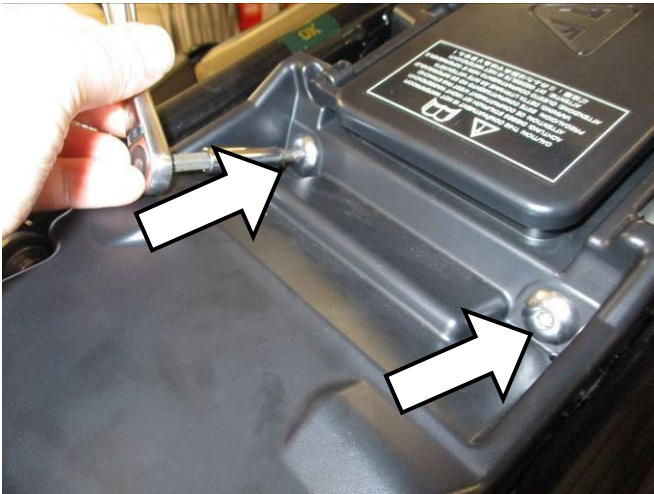


Picture 2

R&G

Unit 1, Shelley's Lane, East Worldham, Alton, Hampshire, GU34 3AQ

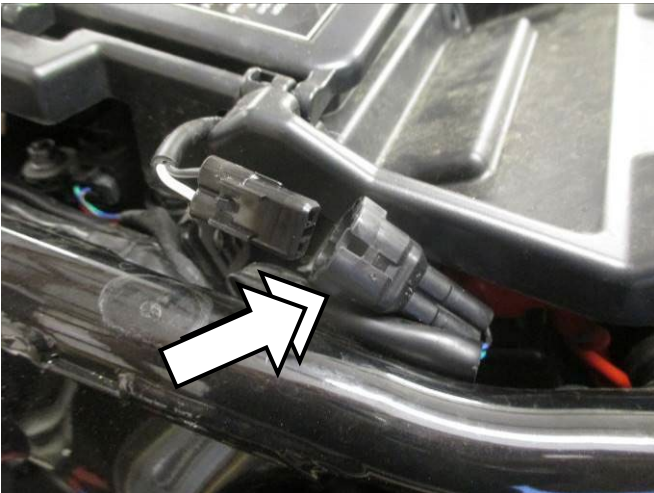
Tel: +44 (0)1420 89007 Fax: +44 (0)1420 87301 [www.rg-racing.com](http://www.rg-racing.com) Email: [info@rg-racing.com](mailto:info@rg-racing.com)



Picture 3



Picture 4



Picture 5



Picture 6



Picture 7

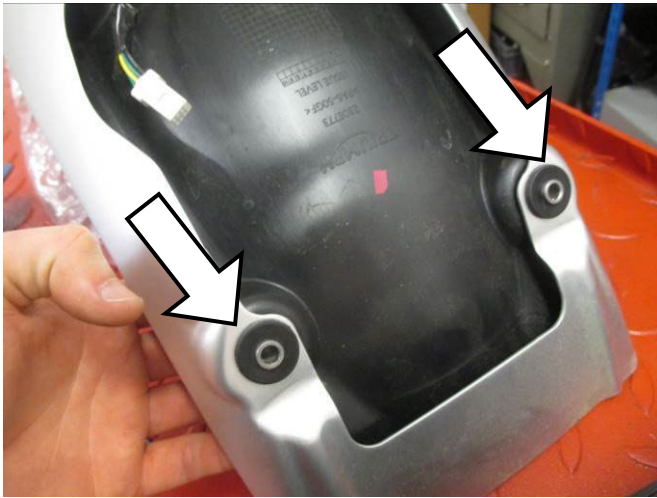


Picture 8

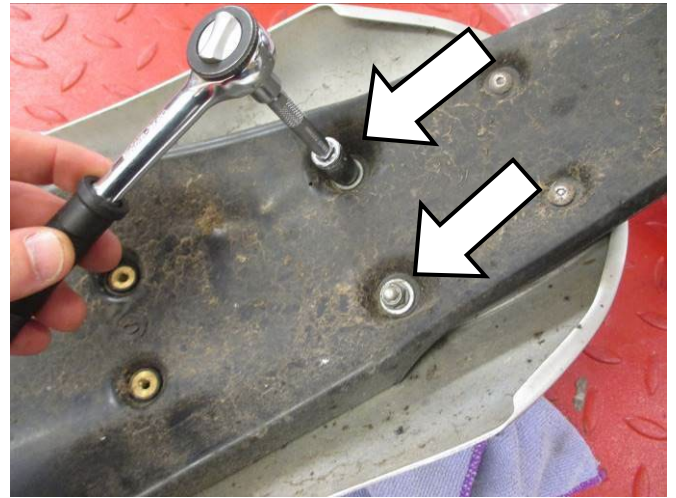
R&G

Unit 1, Shelley's Lane, East Worldham, Alton, Hampshire, GU34 3AQ

Tel: +44 (0)1420 89007 Fax: +44 (0)1420 87301 [www.rg-racing.com](http://www.rg-racing.com) Email: [info@rg-racing.com](mailto:info@rg-racing.com)



Picture 9



Picture 10



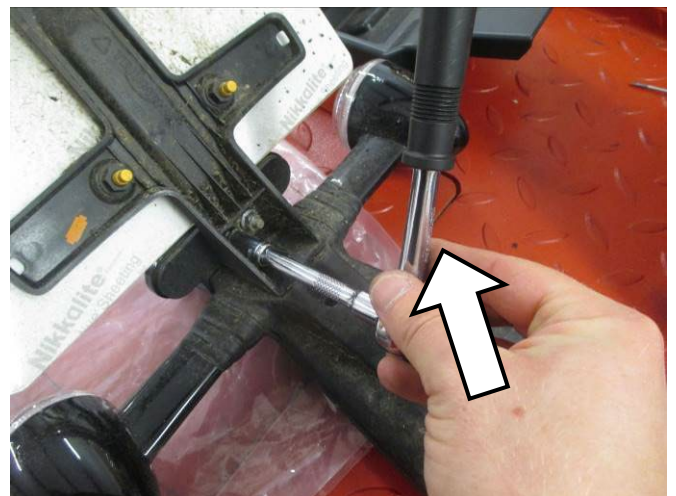
Picture 11



Picture 12

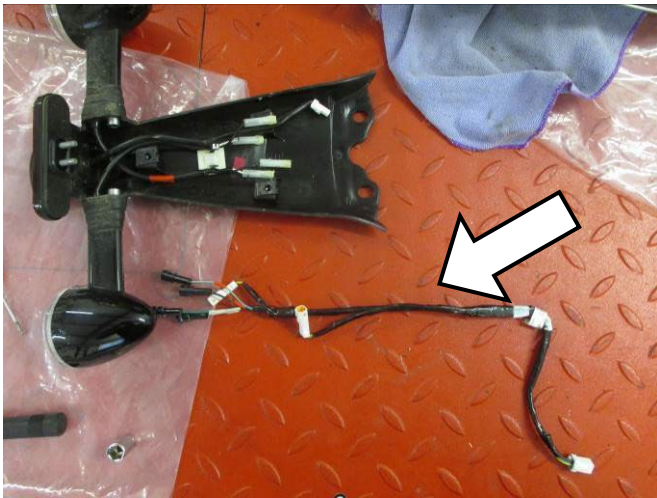


Picture 13



Picture 14

R&G



Picture 15



Picture 16



Picture 17

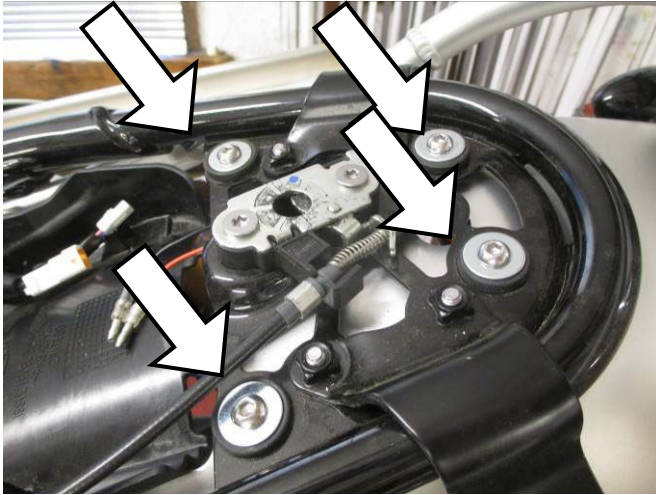


Picture 18





Picture 19



Picture 20



Picture 21



Picture 22



Picture 23

Picture 24

### **FITTING INSTRUCTIONS**

- Remove the seat from the bike using the key as shown in **picture 1**.
- Remove the plastic panel by removing the 3 screws as shown in **pictures 2 & 3** – depending on the model there may be a USB port connector keeping the panel from being fully removed.
- Lift the panel as shown in **picture 4** and disconnect the plug on the RHS of the bike shown in **picture 5**.
- Disconnect the wiring sub-loom from the main loom by disconnecting the white connector shown in **picture 6**.
- Remove the two bolts on the underside of the OEM undertray as shown in **picture 7**.
- While supporting the fender and tail piece, remove the 4 torx bolts from the subframe of the bike as shown in **picture 8**.

R&G

Unit 1, Shelley's Lane, East Worldham, Alton, Hampshire, GU34 3AQ

Tel: +44 (0)1420 89007 Fax: +44 (0)1420 87301 [www.rg-racing.com](http://www.rg-racing.com) Email: [info@rg-racing.com](mailto:info@rg-racing.com)





- Carefully lower the render assembly away from the bike ensuring to thread the wires out of the seat area to fully remove this section.

### **OEM tail unit disassembly.**

- Remove the spacers arrowed in **picture 9** and save for later use.
- Remove the two nyloc nuts shown in **picture 10** using an 8mm socket.
- The OEM undertray piece can now be removed by removing the top hat spacer and the rubber bungs disconnected from the metal fender piece as shown in **picture 11**. Save these components for re-use later.
- Remove the rubber bungs from the undertray for use on the replacement R&G undertray as shown in **picture 12**.
- Remove the button head bolts from the underside of the unit as shown in **picture 13**.
- Separate the two main pieces by removing the locking nuts from the brake light studs.
- The plastic section must be disassembled to re-use the sub-loom, to do this, remove the 2 nuts shown in **picture 14**.
- Noting the correct connectors for the indicators before removing the wiring sub loom as shown in **picture 15**.

### **R&G Tail tidy assembly**

- To assemble the R&G tail tidy, refer to the **Assembly Diagram 1** and follow the steps below:
- Place one section of heat shrink (**item 12**) over the wires of LA0002 (item 9) and heat carefully until wires are covered neatly.
- Affix the LA0002 shroud if not already and secure with a small drop of superglue, this will direct the light towards the licence plate when fitted.
- Fix the LA0002 (item 5) to the licence plate mount bracket (item 1) using the two nuts and washers provided using a 6mm socket as shown on **Assembly diagram 1**.
- Affix the licence plate light connector (**CON0014 - item 11**) to the R&G licence plate light wires using the bullet connectors matching BLACK to BLACK.

### **If using OEM indicators**

- Remove the OEM indicators from the tail unit using an allen key and remove the wires.
- Affix the OEM indicators to the R&G Tail bracket (item 1) using the OEM fixing bolt as shown in **picture 16**, ensuring to keep the indicators on the correct side that they were originally removed.

### **If using R&G Mini indicators**

- Place one section of heat shrink (item 12) over the wires of the mini indicators (not included) and heat carefully until wires are covered neatly.
- Affix the indicator into the larger hole on each side of the tail unit using the locking nut as shown in **picture 17**.
- Fit the rubber blanking grommet (item 14) into the remaining hole to neaten the assembly as shown in **picture 18**.
- Over each seat of wires, pass over 1 x IWC0002 Indicator wiring cover (item 13) and slide up to meet the indicator and cover the nut.
- Connect one mini indicator adaptor (CON0046 - Item 10) to each pair of wires using the corresponding colours.

### **R&G Tail tidy fitting**

R&G

Unit 1, Shelley's Lane, East Worldham, Alton, Hampshire, GU34 3AQ

Tel: +44 (0)1420 89007 Fax: +44 (0)1420 87301 [www.rg-racing.com](http://www.rg-racing.com) Email: [info@rg-racing.com](mailto:info@rg-racing.com)



- Connect the OEM sub loom removed previously to the tail tidy assembly, ensuring the wires correspond to the correct side indicator as removed.
- Offer the R&G tail tidy up to the rear fender part as shown in **picture 19**, with the wiring loom on top of the section so it can be hidden from view when fitted to the bike.
- Fit the R&G tail tidy to the metal rear fender using the brake light fixing studs re-using the OEM locking nuts removed earlier.
- Fit the R&G plastic undertray (item 2) to the metal fender using the bungs removed earlier as shown in **picture 20**, this component will remain loose until secured.
- Referring to **Assembly Diagram 1**, Offer up the fender and R&G tail tidy and affix to the bike using the bolts and washers as shown into rearmost of the 4 upper bolt holes removed earlier, it will help to place the bolts (items 4 & 5) and larger washers (item 7) into place before offering up as shown in **picture 21**.
- Align all 4 bolts with corresponding holes in the R&G tail tidy and secure the assembly to the bike using the two rearmost button head bolts and larger washers (item 7) and Nyloc nuts (item 6), this will secure the assembly while the rest of the fasteners can be fitted.
- Fit the two smaller washers (item 8) and nyloc two nyloc nuts (item 6) to the forward mounting bolts already fitted as shown in **picture 22 & 23**.
- Secure the R&G replacement undertray using the two remaining button head bolts and OEM top hat spacer back into the rubber bungs and secure using the bolts (item 3) as shown in **picture 23**.
- Ensure the loom is correctly connected to the and route the wires neatly under the seat using the cable ties (item 16) and adhesive cable clips (item 15) provided.
- Connect all lights and check the operation, if illumination fails, swap the bullet connectors around and re-test.
- Check all bolts and fixings are fully tightened
- Ensuring no wires are trapped, re-assemble the OEM panels removed and replace the seat.
- Re-fit the licence plate (it may require drilling).
- Depending on local laws, attach enclosed reflector (**item 19**) in an appropriate location.
- Test the licence plate illuminator and all lights before riding.
- **IMPORTANT: IF FITTING A FULL-SIZE LICENCE PLATE AND PLACING IT FAR DOWN ON THE LICENCE PLATE HANGER, THERE IS A SMALL CHANCE OF THE LICENCE PLATE HITTING THE BACK WHEEL UNDER HEAVY LOAD AND OVER LARGE BUMPS IN THE ROAD. IT IS YOUR RESPONSIBILITY TO CHECK FOR THIS POSSIBILITY AND TAKE AVOIDING ACTION. FAILURE TO CHECK THIS COULD RESULT IN SERIOUS INJURY.**

ISSUE 1 06/01/2022 (DM)

#### CONSUMER NOTICE

The catalogue description and any exhibition of samples are only broad indications of the Products and R&G may make design changes which do not diminish their performance or visual appeal and supplying them in such state shall conform to the order. The Buyer acknowledges no representation or warranty (other than as to title) has been given or will apply to the Products other than those in R&G's order or confirmation and the Buyer confirms it has chosen the Products as being of merchantable quality and suitable for its particular purposes. Where R&G fits the Products or undertakes other services it shall exercise reasonable skill and care and rectify any fault free of charge unless the workmanship has been disturbed. The Buyer is responsible for ensuring that the warranty on the motorcycle is not affected by the fitting of the Products. On return of any defective Products R&G shall at its option either supply a replacement or refund the purchase money but shall not be liable if the Products have been modified or used or maintained otherwise than in accordance with R&G's or manufacturer's instructions and good engineering practice or if the defect arises from accident or neglect. Other than identified above and subject to R&G not limiting its liability for causing death and personal injury, it shall not be liable for indirect or consequential loss and otherwise its liability shall be limited to the amounts paid by the Buyer for the Products or the fitting or service concerned. These terms do not affect the Buyer's statutory rights.

R&G

Unit 1, Shelley's Lane, East Worldham, Alton, Hampshire, GU34 3AQ

Tel: +44 (0)1420 89007 Fax: +44 (0)1420 87301 [www.rg-racing.com](http://www.rg-racing.com) Email: [info@rg-racing.com](mailto:info@rg-racing.com)