



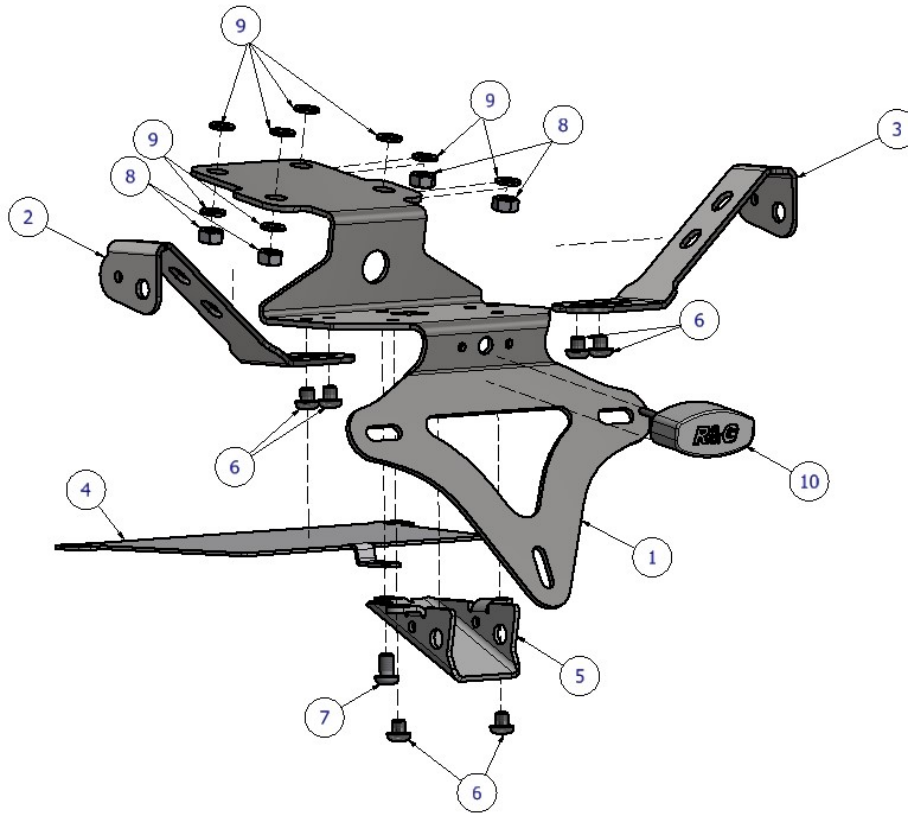
FITTING INSTRUCTIONS FOR LP0253BK LICENCE PLATE BRACKET
TRIUMPH SPEED TRIPLE 1050RS '18-

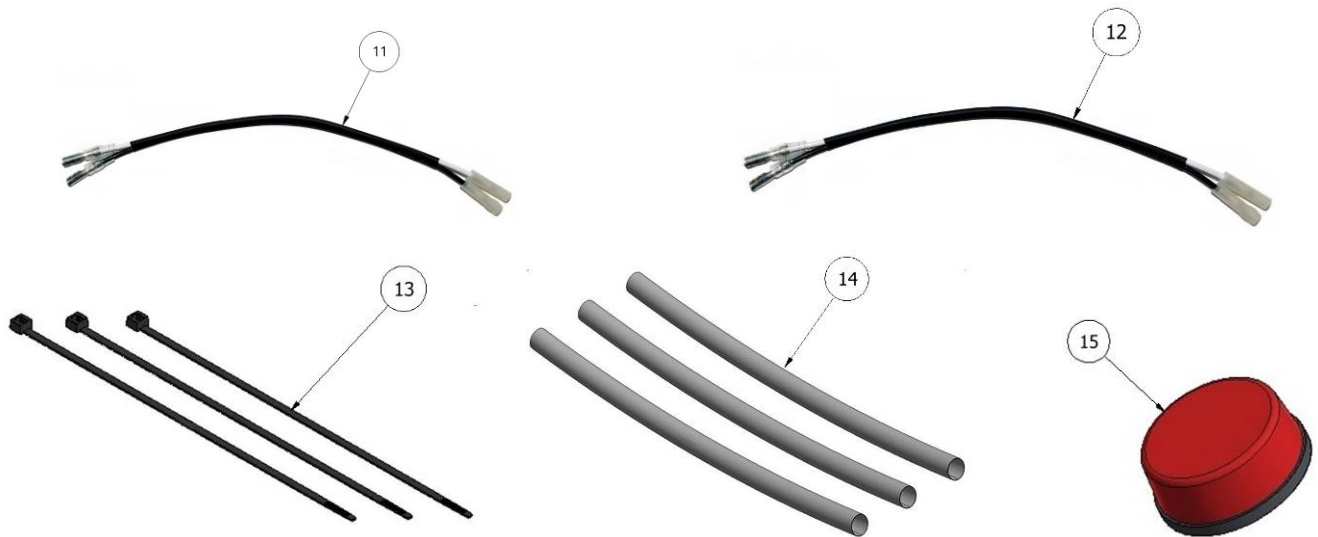


THIS KIT CONTAINS THE ITEMS PICTURED AND LABELLED BELOW.
DO NOT PROCEED UNTIL YOU ARE SURE ALL PARTS ARE PRESENT.

Please note that the way the kit is packed does not necessarily represent the way of mounting to the bike.

THE PARTS SHOWN MAY BE REPRESENTATIVE ONLY (FOR CLARITY OF INSTRUCTIONS ONLY).





LEGEND

- ITEM 1 = LICENCE PLATE BRACKET (TB0194 PART 1). (x1)
 ITEM 2 = RIGHT SIDE INDICATOR BRACKET (TB0253 PART 2). (x1)
 ITEM 3 = LEFT SIDE INDICATOR BRACKET (TB0253 PART 3). (x1)
 ITEM 4 = COVER PLATE (TB0194 PART 4). (x1)
 ITEM 5 = WIRING COVER (TB0253 PART 1). (x1)
 ITEM 6 = M6 x 6mm LONG BUTTON HEAD BOLTS. (x6)
 ITEM 7 = M6 x 10mm LONG BUTTON HEAD BOLTS. (x3)
 ITEM 8 = M6 NYLOC NUTS. (x4)
 ITEM 9 = M6 WASHERS. (x8)
 ITEM 10 = LICENCE PLATE ILLUMINATOR ASSEMBLY. (x1)
 ITEM 11 = LICENCE PLATE ILLUMINATOR CONNECTOR (CON0065). (x1).
 ITEM 12 = INDICATOR CONNECTORS (CON0046). (x2).
 ITEM 13 = CABLE TIES. (x2)
 ITEM 14 = 150MM LENGTH OF HEATSHRINK. (x3)
 ITEM 15 = REFLECTOR. (x1)
 ITEM 16 = SELF ADHESIVE FOAM. (x2) (NOT SHOWN)

TOOLS REQUIRED

- Set of metric allen keys.
- Set of metric sockets and wrench.
 - Set of torx drivers.
 - Cable cutters.

MAXIMUM TORQUE SETTINGS

- M4 BOLT = 8Nm
- M5 BOLT = 12Nm
- M6 BOLT = 15Nm

R&G



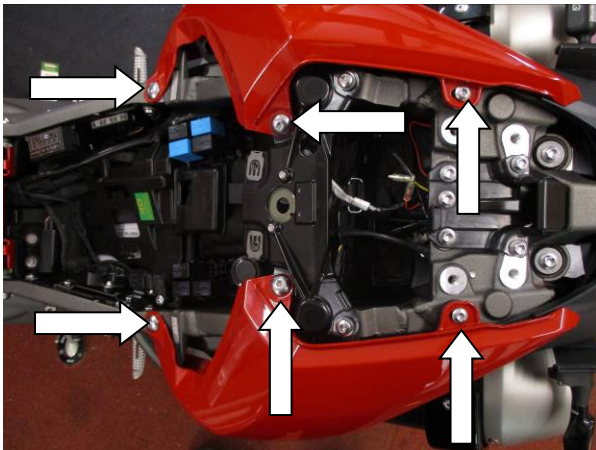
- M8 BOLT = 20Nm
- M10 BOLT = 40Nm



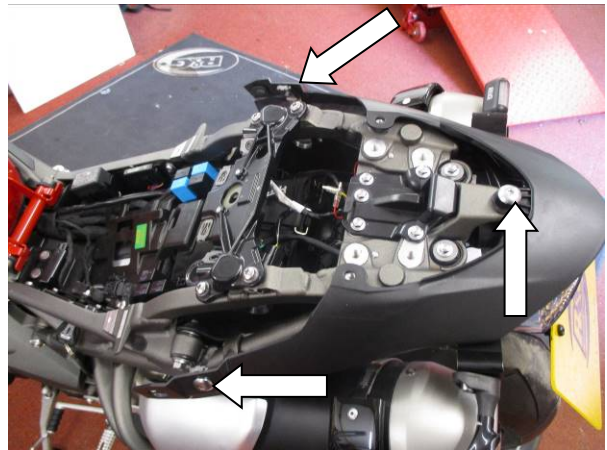
Picture 1



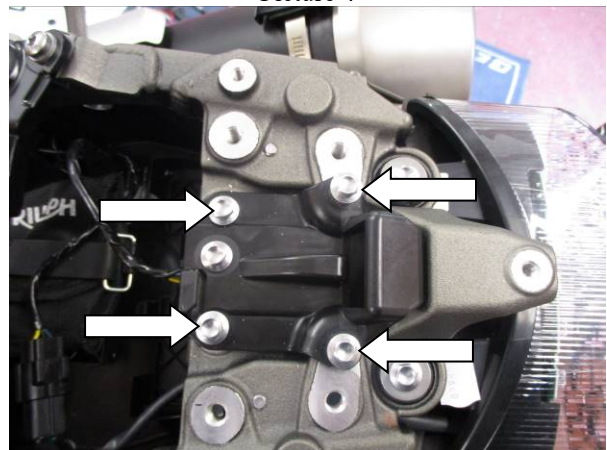
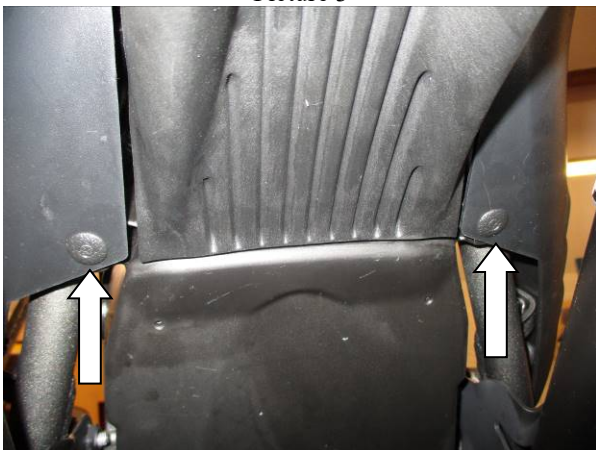
Picture 2



Picture 3

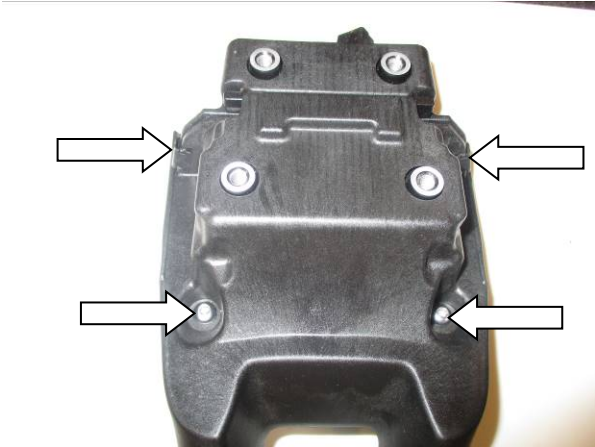


Picture 4





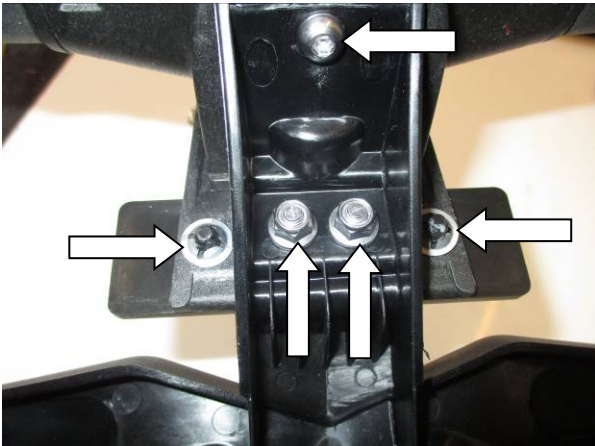
Picture 5



Picture 6



Picture 7



Picture 8



Picture 9

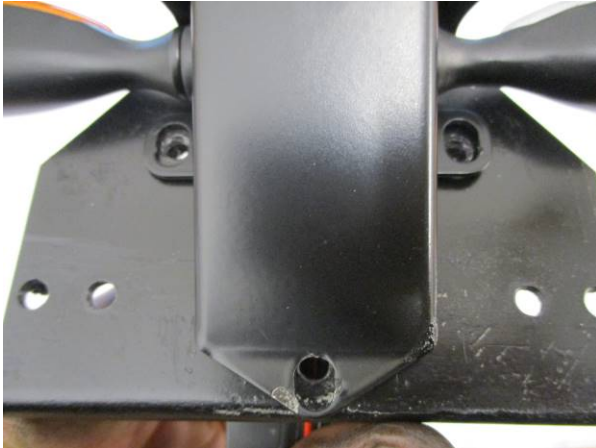


Picture 10



Picture 11

Picture 12



Picture 13



Picture 14



Picture 15



Picture 16

FITTING INSTRUCTIONS

- Remove pillion seat using the key.
- Remove the two button head bolts that hold the main seat.
- Remove the 3 bolts from both rear panels shown in picture 3.
- Remove the 3 bolts arrowed in picture 4 and the 2 push pins located underneath on the undertray arrowed in picture 5. Remove the rear panel by sliding it off backwards.
- Disconnect the main tail unit connector, not the rear light connector.
- Undo the 4 bolts arrowed in picture 6, support the OEM licence plate hanger while undoing the bolts. Gently remove the entire assembly and wiring.
- Protect the wiring of the licence plate illuminator (item 10) using a length of heatshink (item 14) and mount to the licence plate bracket (item 1) using the included washers and nuts. Apply a small amount of super glue to the light shroud to hold it in position. Thread the wiring through the square hole and large round hole in the licence plate bracket.

R&G

Unit 1, Shelley's Lane, East Worldham, Alton, Hampshire, GU34 3AQ

Tel: +44 (0)1420 89007 Fax: +44 (0)1420 87301 www.rg-racing.com Email: info@rg-racing.com



Indicators can be mounted from the indicator brackets (item 2 & 3) or from the wiring cover (item 5) depending on the desired look.

If using OEM indicators

- Remove the bolt from each indicator.
- Remove the 2 bolts and 2 clips arrowed in picture 7.
- Remove the two round clips and 3 bolts arrowed in picture 9.
- Split the licence plate hanger, make note of the indicator wiring, unplug the wiring from the sub-harness and remove the indicators.

If using indicator brackets to mount indicators

- Mount the indicators to their corresponding indicator brackets (items 2 & 3) as shown in picture 10 using the original mounting bolt.
- Mount the indicator brackets to the licence plate bracket (item 1) using 2 small M6 bolts (item 6) as shown in picture 11.
- Offer the wiring cover up to the licence plate bracket as shown in picture 13, secure the wiring cover with 2 small M6 bolts (item 6) on either side.

If using the wiring cover to mount indicators

- Thread the indicator wiring of both indicators through the larger holes of the corresponding side on the wiring cover.
- Offer the wiring cover up to the licence plate bracket as shown in picture 13 feeding the indicator wiring through the large square and circular hole as shown in picture 14. Secure the wiring cover with 2 small M6 bolts (item 6) on either side.
- Secure the indicators to the threaded holes using 2 longer M6 bolts (item 7).

If using mini indicators (R&G product codes: RG370 (bulb type), RG371 (LED), RG372 (LED Aero))

- Protect the indicator wiring using a length of heatshrink (item 14).

If using indicator brackets to mount mini indicators

- Mount the indicators to their corresponding indicator brackets (items 2 & 3) as shown in picture 10 using the included flange nut.
- Mount the indicator brackets to the licence plate bracket (item 1) using 2 small M6 bolts (item 6) as shown in picture 11.
- Offer the wiring cover up to the licence plate bracket as shown in picture 13, secure the wiring cover with 2 small M6 bolts (item 6) on either side.

If using the wiring cover to mount mini indicators

- Thread the indicator wiring of both indicators through the larger holes of the corresponding side on the wiring cover and secure using the included flange nut.
- Offer the wiring cover up to the licence plate bracket as shown in picture 13 feeding the indicator wiring through the large square and circular hole as shown in picture 14. Secure the wiring cover with 2 small M6 bolts (item 6) on either side.
- Cut strips of self-adhesive foam (item 16) and apply to the licence plate bracket as shown in picture 14.
- Secure the tail tidy assembly to the tail of the bike using the original 4 bolts and the included nyloc nuts (item 8) and M6 washers (item 9) as shown in picture 15 and in the exploded diagram. Thread the wiring through into the under-seat compartment.
- If using indicator brackets, secure the wiring to the bracket using a cable tie (item 13) on each side.
- Secure the cover plate (item 4) to the licence plate bracket and wiring cover using a longer M6 bolt (item 7) as shown in picture 16.

R&G

Unit 1, Shelley's Lane, East Worldham, Alton, Hampshire, GU34 3AQ

Tel: +44 (0)1420 89007 Fax: +44 (0)1420 87301 www.rg-racing.com Email: info@rg-racing.com



- Gently slide the OEM rear panel back in and locate the cover plate on the inside. Push the OEM push pins back in their original position, securing the cover plate.
- If using OEM indicators connect these to the OEM sub loom removed earlier.
- If using mini indicators connect these to the indicator connectors (item 12) and connect this to the OEM sub loom removed earlier. A set of R&G resistors (RGR0001) may be required to achieve the correct flash rate.
- To connect the OEM licence plate illuminator wiring to the R&G licence plate illuminator the OEM wiring will need to be connected using the supplied connector (item 11).
- Connect the OEM sub loom to the main loom.
- At this stage it is advisable to check operation of all lights. If lights fail to illuminate swap the connectors.
- Tidy the wires using cable tie provided and tuck into the space where wires were originally located.
- Refit both rear side panels, rider seat and pillion seat as original.
- Refit the licence plate (it may require drilling).
- Please check the operation of all lights before riding the motorcycle.
- **IMPORTANT: IF FITTING A FULL-SIZE LICENCE PLATE AND PLACING IT FAR DOWN ON THE LICENCE PLATE HANGER, THERE IS A SMALL CHANCE OF THE LICENCE PLATE HITTING THE BACK WHEEL UNDER HEAVY LOAD AND OVER LARGE BUMPS IN THE ROAD. IT IS YOUR RESPONSIBILITY TO CHECK FOR THIS POSSIBILITY AND TAKE AVOIDING ACTION. FAILURE TO CHECK THIS COULD RESULT IN SERIOUS INJURY.**
- Depending on local laws, attach enclosed reflector (item 15) in an appropriate location

ISSUE 1 11/06/2021 (AO)

Digital copies of these instructions are available to download from www.rg-racing.com

CONSUMER NOTICE

The catalogue description and any exhibition of samples are only broad indications of the Products and R&G may make design changes which do not diminish their performance or visual appeal and supplying them in such state shall conform to the order. The Buyer acknowledges no representation or warranty (other than as to title) has been given or will apply to the Products other than those in R&G's order or confirmation and the Buyer confirms it has chosen the Products as being of merchantable quality and suitable for its particular purposes. Where R&G fits the Products or undertakes other services it shall exercise reasonable skill and care and rectify any fault free of charge unless the workmanship has been disturbed. The Buyer is responsible for ensuring that the warranty on the motorcycle is not affected by the fitting of the Products. On return of any defective Products R&G shall at its option either supply a replacement or refund the purchase money but shall not be liable if the Products have been modified or used or maintained otherwise than in accordance with R&G's or manufacturer's instructions and good engineering practice or if the defect arises from accident or neglect. Other than identified above and subject to R&G not limiting its liability for causing death and personal injury, it shall not be liable for indirect or consequential loss and otherwise its liability shall be limited to the amounts paid by the Buyer for the Products or the fitting or service concerned. These terms do not affect the Buyer's statutory rights.

R&G RETURNS POLICY (NON-FAULTY GOODS)

Returns must be pre-authorized (if not pre-authorized the return will be rejected). Goods may only be returned direct to us if they were purchased direct from us (customer must prove if necessary). Otherwise to be returned to original vendor. Goods must be in re-sellable condition, in the opinion of R&G. All returns are subject to a 25% restocking and handling fee (25% of the gross value exc. P&P – at the prevailing price at time of purchase). The customer must pay any and all carriage charges. No returns of discontinued products, unless within 14 days of purchase. This policy does not affect your statutory rights and does not refer to faulty goods.

R&G

Unit 1, Shelley's Lane, East Worldham, Alton, Hampshire, GU34 3AQ
 Tel: +44 (0)1420 89007 Fax: +44 (0)1420 87301 www.rg-racing.com Email: info@rg-racing.com