



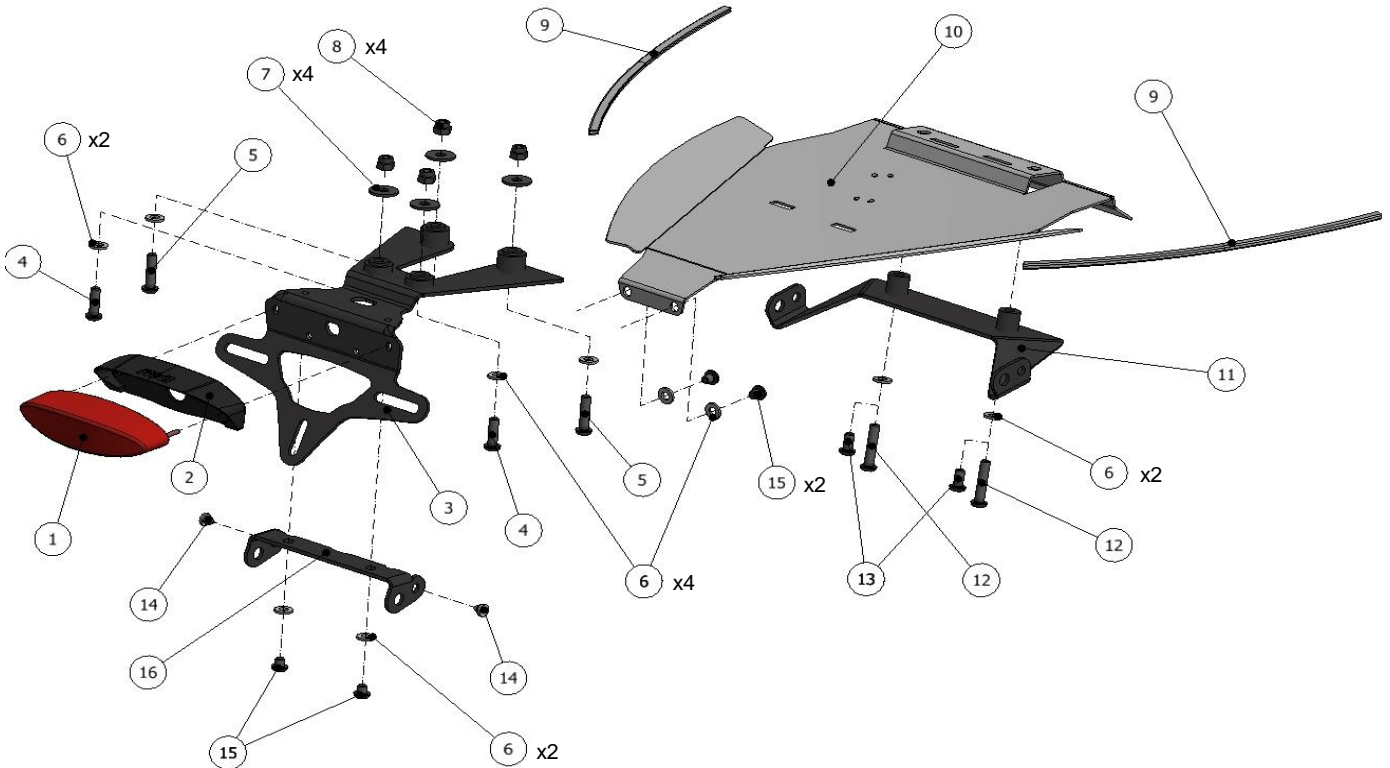
**FITTING INSTRUCTIONS FOR LP0201BK LICENCE PLATE BRACKET**  
**TRIUMPH THRUXTON 1200 & THRUXTON 1200 R '16-**

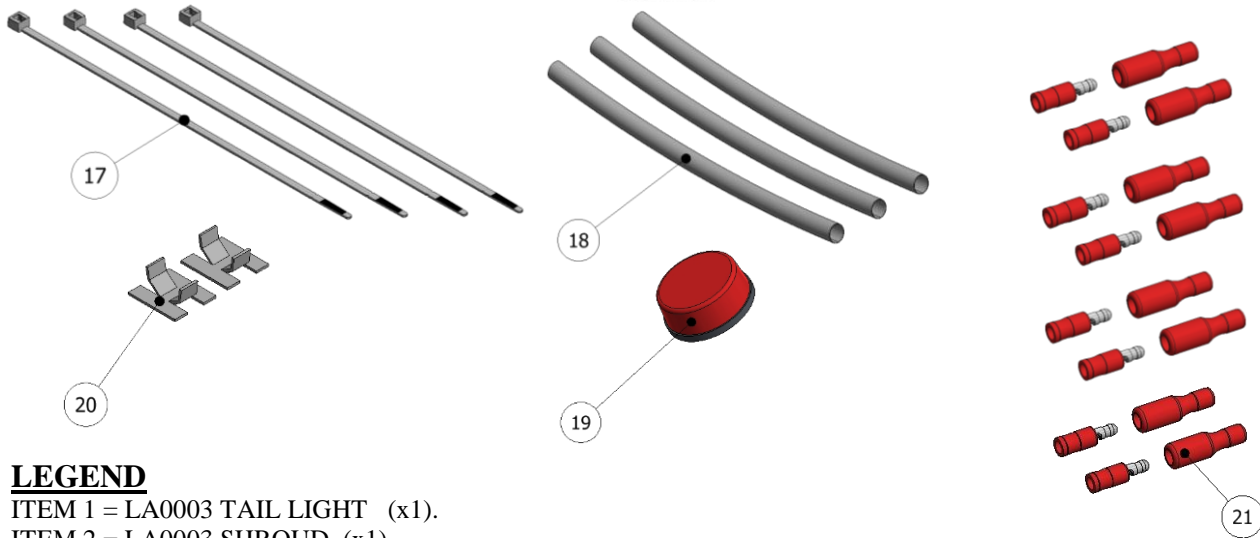


**THIS KIT CONTAINS THE ITEMS PICTURED AND LABELLED BELOW.**  
**DO NOT PROCEED UNTIL YOU ARE SURE ALL PARTS ARE PRESENT.**

Please note that the way the kit is packed does not necessarily represent the way of mounting to the bike.

THE PARTS SHOWN MAY BE REPRESENTATIVE ONLY (FOR CLARITY OF INSTRUCTIONS ONLY).





**LEGEND**

- ITEM 1 = LA0003 TAIL LIGHT (x1).
- ITEM 2 = LA0003 SHROUD (x1).
- ITEM 3 = LICENCE PLATE BRACKET (TB0201 Part 1) (x1).
- ITEM 4 = M6 x 20mm LONG BUTTON HEAD BOLTS (x2).
- ITEM 5 = M6 x 25mm LONG BUTTON HEAD BOLTS (x2).
- ITEM 6 = M6 WASHERS (12mm OD) (x10).
- ITEM 7 = M6 WASHERS (20mm OD) (x4).
- ITEM 8 = M6 NYLOC NUTS (x4).
- ITEM 9 = RUBBER 'U' PROFILE (x2 LONG & x1 SHORT).
- ITEM 10 = UNDERSEAT COVER (TB0201 Part 2) (x1).
- ITEM 11 = FORWARD INDICATOR BRACKET (TB0201 Part 3) (x1).
- ITEM 12 = M6 x 30mm LONG BUTTON HEAD BOLTS (x2).
- ITEM 13 = M6 x 12mm LONG BUTTON HEAD BOLTS (x2).
- ITEM 14 = RUBBER BUNGS (x2).
- ITEM 15 = M6 x 6mm LONG BUTTON HEAD BOLTS (x4).
- ITEM 16 = REARWARD INDICATOR BRACKET (TB0201 Part 4) (x1).
- ITEM 17 = 2.5mm CABLE TIES (x4).
- ITEM 18 = 150mm LENGTH OF HEATSHRINK (x3).
- ITEM 19 = REFLECTOR (x1).
- ITEM 20 = SELF-ADHESIVE CABLE CLIPS (x2).
- ITEM 21 = BULLET CONNECTORS (CON0004) (x4).

Please note that in cases where kits are packed with rubber washers holding the components onto the bolt – *the rubber washers should be thrown away!*

**TOOLS REQUIRED**

- Set of metric Allen keys to include 4, 5 & 6mm A/F size.
  - 6, 8, 10 & 13mm spanners or sockets.
    - Cable cutters.
  - Superglue or similar adhesive.

**MAXIMUM TORQUE SETTINGS**



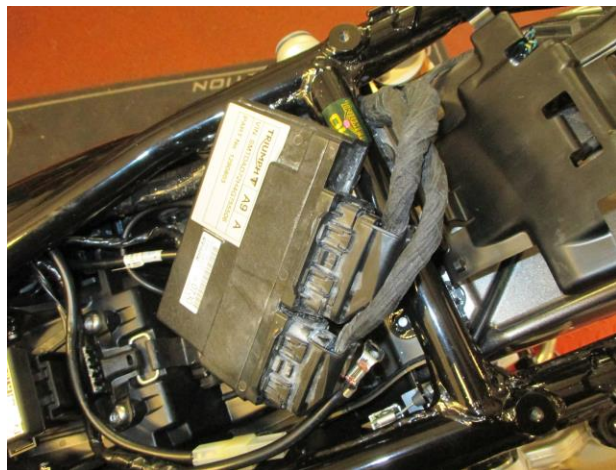
- M4 Bolt = 8 Nm
- M5 Bolt = 12 Nm
- M6 Bolt = 15 Nm
- M8 Bolt = 20 Nm



Picture 1



Picture 2



Picture 3



Picture 4



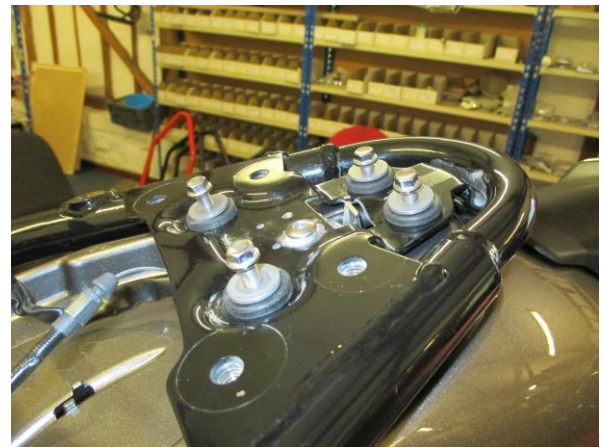
Picture 5



Picture 6



Picture 7



Picture 8



Picture 9



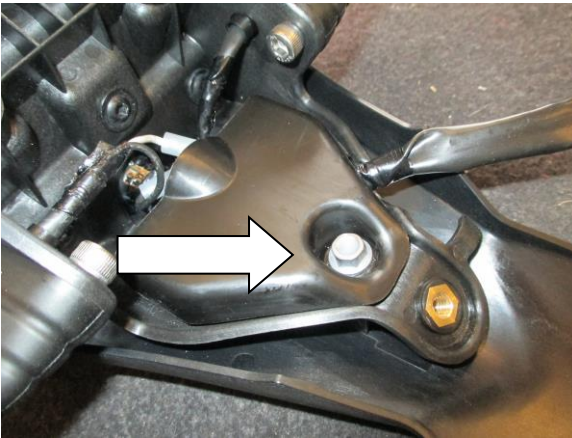
Picture 10



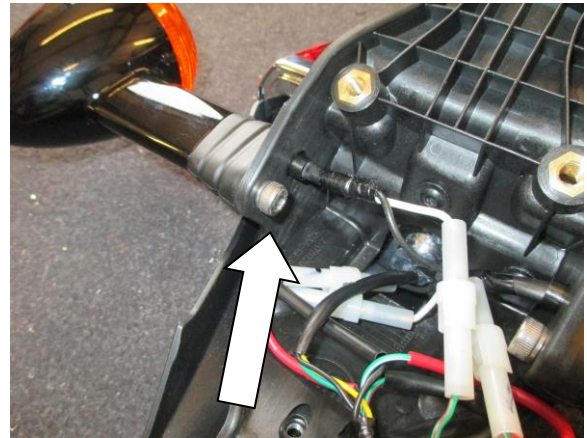
Picture 11



Picture 12



Picture 13



Picture 14



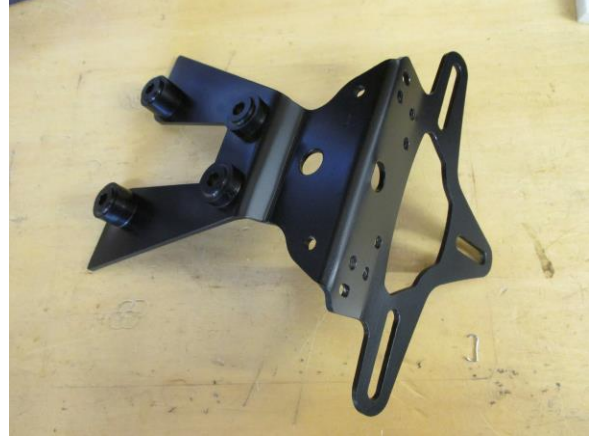
Picture 15



Picture 16



Picture 17



Picture 18



Picture 19



Picture 20



Picture 21



Picture 22



Picture 23



Picture 24



Picture 25



Picture 26



Picture 27



Picture 28



Picture 29



Picture 30



Picture 31



Picture 32



Picture 33



Picture 34





Picture 35



Picture 36



Picture 37



Picture 38



Picture 39



Picture 40



Picture 41



Picture 42



Picture 43



Picture 44



Picture 45



Picture 46



## **FITTING INSTRUCTIONS**

- To fit the R&G tail tidy, remove the seat and tail unit using the key, as shown in picture 1.
- Unclip the two rearward prongs to release the rear of the ECU plastic mount, as shown in picture 2.
- Continue to pull the ECU carefully out of the plastic mount and sit it on top of the battery, before removing the two front mounting prongs of the plastic mount and remove from the bike, as shown in pictures 3 & 4.
- Disconnect the large black connector which connects the loom to the indicators/tail light, as shown in picture 5.
- Remove the seat locking cable from the mounts in the mudguard, as shown in picture 6.
- Remove the two bolts that secure the front of the rear mudguard in place, as shown in picture 7.
- At the rear of the bike, remove the four bolts that secure the rear mudguard in place, as shown in picture 8. Support the mudguard whilst the last bolt is being removed and then the mudguard can come away from the bike, as shown in picture 9.
- Remove the four rubbers that are located in the mounting holes for the mudguard on the rear subframe, as shown in picture 10.
- With the rear mudguard off the bike, the OEM indicators and tail light wiring loom can now be removed.
- Take the mudguard assembly, and remove the three bolts on the underside that secure the rear light unit in place, as shown in pictures 11 & 12.
- Remove the bolt that mounts the plastic cover in place, before removing the cover to expose the wiring, as arrowed in picture 13.
- If intending to re-use the OEM indicators, disconnect the wiring connectors and remove the mounting bolt, as arrowed in picture 14 and shown in picture 15.
- To fit the R&G tail light (item 1 - LA0003), the original tail light & indicator wiring loom needs to be “cut & shut”. To do this, cut the three wires that go into the tail light, as shown in pictures 16 & 17 with the red line, and then fit three of the female bullet connectors supplied (item 21) to the exposed wires. If using aftermarket mini indicators, the connectors for the indicator wiring need to be removed and replaced with female bullet connectors (item 21).
- Take the R&G Licence Plate Bracket (item 3 – TB0201 Part 1) and offer it up to the underside of the rear subframe, so that the bosses on top of the swaged spacers locate within the mounting holes on the subframe, as shown in pictures 18 & 19. Whilst supporting this in place, fit the two M6 x 20mm long button head bolts (item 4) with two M6 washers (item 6) through the two rearward mounting holes from the underside and the two M6 x 25mm long button head bolts (item 5) with two M6 washers (item 6) through the two forward mounting holes. Fit the four larger diameter M6 washers, (item 7) and four M6 Nyloc nuts (item 8) to the exposed thread of each bolt on top of the subframe and tighten, as shown in pictures 19 & 20.

### ***If fitting the rearward mounted indicator option***

- Take the rearward indicator bracket (item 16 – TB0201 Part 4) and offer up to the underside of the licence plate bracket already fitted, ensuring the cut-out in the centre aligns with the slot on the licence plate bracket, before fitting two M6 x 6mm long button head bolts (item 15) with two M6 washers (item 6) through the two mounting holes on the indicator bracket and tighten into the threaded holes on the licence plate bracket, as shown in picture 21.
- Take the R&G Tail Light (item 1 – LA0003) and fit the light shroud (item 2) as shown in picture 22 and fit one length of heatshrink (item 18) to the wiring.
- Fit one male bullet connector (item 21) to the end of each wire.
- Offer this assembly up to the licence plate bracket, ensuring the threaded bosses on the light fit through the two slots and the wiring fits through the central hole, as shown in pictures 23 & 24, before fitting the washers and nuts and tightening in place. Feed this wiring through the hole and neatly up to the top of the rear subframe.
- Fit the indicators of choice by feeding the wiring through the larger hole on the indicator bracket and locating the indicator boss within the hole.



- If fitting the OEM indicators, re-use the cap head bolt to secure the indicator in place and feed the wiring up and around the edge of the bracket, as shown in pictures 25 & 26.
- If fitting the R&G Mini Indicators, secure in place using the nut and use the rubber bung supplied (item 14) to blank off the smaller hole. Fit one length of heatshrink (item 18) to the wiring and feed it up through the central hole, as shown in pictures 27, 28, 29 & 30.
- Take the underseat cover (item 10 – TB0201 Part 2) and fit the two rubber ‘U’ profile edging strips (item 9) to the two long curved edges using a suitable adhesive to hold in place, as shown in picture 31. *This protects the inside of the seat when fitted from the sharp edge of the metal.*
- Take the remaining, small piece of rubber ‘U’ profile edging strip and fit to the edge shown in picture 32.
- Offer the underseat cover up to the underside of the rear subframe and fit the two M6 x 12mm long button head bolts (item 13) with two M6 washers (item 6) through the two front mounting holes and loosely tighten into the threaded bosses on the rear subframe, as shown in picture 33.
- Fit the remaining two M6 x 6mm long button head bolts (item 15) with two M6 washers (item 6) through the two rear mounting holes and tighten into the threaded holes of the already fitted licence plate bracket, as shown in picture 34. *If the underseat cover does not fit easily, loosen the bolts to the licence plate bracket and re-align within the slotted mounts, before re-tightening the bolts.*
- Ensure all bolts are tightened evenly and the underseat cover is securely mounted in place.

#### ***If fitting the forward mounted indicator option***

- Take the forward indicator bracket (item 11 – TB0201 Part 3) and fit the indicators of choice by feeding the wiring through the larger hole on the indicator bracket and locating the indicator boss within the hole.
  - If fitting the R&G Mini Indicators, secure in place using the nut and use the rubber bung supplied (item 14) to blank off the smaller hole, as shown in pictures 35 & 36. Fit one length of heatshrink (item 18) to the wiring and use a self-adhesive cable clip (item 20) to secure in place on the bracket.
  - If fitting the OEM indicators, re-use the cap head bolt to secure the indicator in place.
  - Take the underseat cover (item 10 – TB0201 Part 2) and fit the two rubber ‘U’ profile edging strips (item 9) to the two long curved edges using a suitable adhesive to hold in place, as shown in picture 31. *This protects the inside of the seat when fitted from the sharp edge of the metal.*
  - Take the remaining, small piece of rubber ‘U’ profile edging strip and fit to the edge shown in picture 32.
  - Offer the underseat cover up to the underside of the rear subframe and fit the two M6 x 30mm long button head bolts (item 12) with two M6 washers (item 6) through the two mounting holes on the indicator bracket and then the two front mounting holes on the underseat cover (see exploded diagram) and loosely tighten into the threaded bosses on the rear subframe, as shown in picture 37.
  - Ensure the wiring is neatly routed, with the OEM indicator wiring routed around the side of the underseat cover and the R&G mini indicator can be routed through the large opening between the indicator bracket and underseat cover, as shown in picture 38.
  - Fit the remaining two M6 x 6mm long button head bolts (item 15) with two M6 washers (item 6) through the two rear mounting holes and tighten into the threaded holes of the already fitted licence plate bracket, as shown in picture 34. *If the underseat cover does not fit easily, loosen the bolts to the licence plate bracket and re-align within the slotted mounts, before re-tightening the bolts.*
  - Ensure all bolts are tightened evenly and the underseat cover is securely mounted in place.
- 
- Secure the seat locking mechanism cable in place on top of the underseat cover using two cable ties (item 17) as shown in pictures 39 & 40. *It is advisable to check for the correct operation of the seat lock at this stage.*
  - Take the now modified OEM tail light loom with the bullet connectors fitted and re-connect this to the OEM loom on the bike, as shown in picture 41.
  - Connect the wiring up as follows for the rear light



OEM GREEN/PURPLE ----- LA0003 RED  
OEM YELLOW ----- LA0003 YELLOW  
OEM BLACK ----- LA0003 BLACK

- If fitting R&G Aero Indicators with LED's, the yellow wire on the Aero Indicators connects with the green/red (left indicator) or green/red (right indicator) wire on the OEM loom and the black wire on the Aero Indicators connects with the black wire on the loom. 1x set of RGR0001 resistors (available separately) are required to achieve the correct flash rate.
- If fitting R&G Mini Indicators with bulbs, the black/white wire on the Mini Indicators connects with the green/red (left indicator) or green/red (right indicator) wire on the OEM loom and the black wire on the Mini Indicators connects with the black wire on the loom. No resistors are required.
- If fitting R&G Mini Indicators with LED's, the black/white wire on the Mini Indicators connects with the green/red (left indicator) or green/red (right indicator) wire on the OEM loom and the black wire on the Mini Indicators connects with the black wire on the loom. 1x set of RGR0001 resistors (available separately) are required to achieve the correct flash rate.
- Check for the correct operation of all lights at this stage.
- Tuck the wiring neatly to one side using cable ties/cable clips and re-fit the ECU and its plastic mount, in a similar way to how it was removed. There are slots in the underseat cover to mount the plastic fixings, as shown in pictures 42, 43, 44 & 45.
- Ensure the tail tidy is correctly fitted and secured in place before re-fitting the seat/tail unit.
- Re-fit the licence plate (it may require drilling).
- Depending on local laws, attach enclosed reflector in an appropriate location.
- Test the licence plate illuminator and all lights before riding.

ISSUE 1 15/07/2016 (AR)

**Digital copies of these instructions are available to download from [www.rg-racing.com](http://www.rg-racing.com)**

**CONSUMER NOTICE**

The catalogue description and any exhibition of samples are only broad indications of the Products and R&G may make design changes which do not diminish their performance or visual appeal and supplying them in such state shall conform to the order. The Buyer acknowledges no representation or warranty (other than as to title) has been given or will apply to the Products other than those in R&G's order or confirmation and the Buyer confirms it has chosen the Products as being of merchantable quality and suitable for its particular purposes. Where R&G fits the Products or undertakes other services it shall exercise reasonable skill and care and rectify any fault free of charge unless the workmanship has been disturbed. The Buyer is responsible for ensuring that the warranty on the motorcycle is not affected by the fitting of the Products. On return of any defective Products R&G shall at its option either supply a replacement or refund the purchase money but shall not be liable if the Products have been modified or used or maintained otherwise than in accordance with R&G's or manufacturer's instructions and good engineering practice or if the defect arises from accident or neglect. Other than identified above and subject to R&G not limiting its liability for causing death and personal injury, it shall not be liable for indirect or consequential loss and otherwise its liability shall be limited to the amounts paid by the Buyer for the Products or the fitting or service concerned. These terms do not affect the Buyer's statutory rights.

**R&G RACING RETURNS POLICY (NON-FAULTY GOODS)**

Returns must be pre-authorized (if not pre-authorized the return will be rejected). Goods may only be returned direct to us if they were purchased direct from us (customer must prove if necessary). Otherwise to be returned to original vendor. Goods must be in re-sellable condition, in the opinion of R&G Racing. All returns are subject to a 25% restocking and handling fee (25% of the gross value exc. P&P – at the prevailing price at time of purchase). The customer must pay any and all carriage charges. No returns of discontinued products, unless within 14 days of purchase. This policy does not affect your statutory rights and does not refer to faulty goods.