



**FITTING INSTRUCTIONS FOR LP0285BK LICENCE PLATE BRACKET
FOR TRIUMPH SPEED TWIN 1200 2019**



THIS KIT CONTAINS THE ITEMS PICTURED AND LABELLED OVER PAGE.

SOME PARTS MAY BE SHOWN FOR CLARITY OF INSTRUCTIONS ONLY.

DO NOT PROCEED UNTIL YOU ARE SURE ALL PARTS ARE PRESENT.

PLEASE READ ALL INSTRUCTIONS BEFORE PROCEEDING.

**IF IN ANY DOUBT WHEN FITTING OUR PRODUCTS, CONSULT ONE OF
OUR DEALERS OR HAVE FITTED BY A QUALIFIED TECHNICIAN.**

PLEASE NOTE THAT THE WAY THE KIT IS PACKED DOES NOT NECESSARILY REPRESENT THE
WAY OF MOUNTING TO THE BIKE.

IN THE EVENT OF RUBBER WASHERS BEING USED TO HOLD COMPONENTS ONTO BOLTS,
THESE RUBBER WASHERS CAN BE THROWN AWAY.

DIGITAL COPIES OF THESE INSTRUCTIONS ARE AVAILABLE FROM:

WWW.RG-RACING.COM



<u>TOOLS REQUIRED</u>	<u>GENERAL TORQUE SETTINGS</u>
<ul style="list-style-type: none"> • 8 and 10mm sockets and wrench. <ul style="list-style-type: none"> • 8 and 10mm spanners. <ul style="list-style-type: none"> • T30 bit or key. • Small amount of adhesive. 	<p>M4 BOLT = 8Nm M5 BOLT = 12Nm M6 BOLT = 15Nm M8 BOLT = 20Nm M10 BOLT = 40Nm M12 BOLT = 40Nm</p>

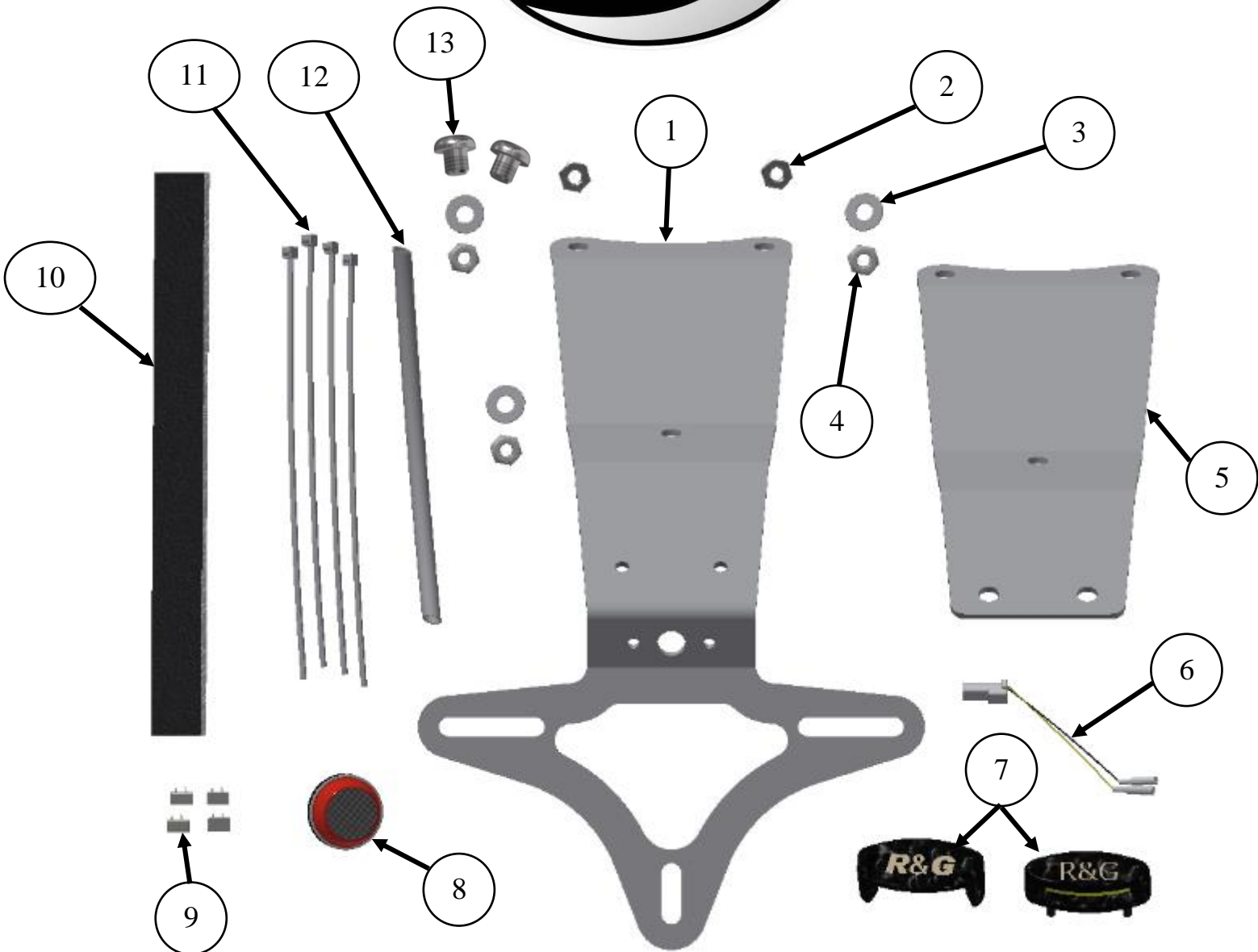
LEGEND

ITEM NO.	DESCRIPTION	QTY
ITEM 1	LICENCE PLATE BRACKET (TB0285 PART 1)	1
ITEM 2	M6 PLAIN NUTS	2
ITEM 3	M6 WASHERS	3
ITEM 4	M6 NYLOC NUTS	3
ITEM 5	LICENCE PLATE SUPPORT BRACKET (TB0285 PART 2)	1
ITEM 6	LICENCE PLATE ILLUMINATOR CONNECTOR (CON0014)	1
ITEM 7	LICENCE PLATE ILLUMINATOR ASSEMBLY (LA0002)	1
ITEM 8	REFLECTOR (REFL 3)	1
ITEM 9	SELF-ADHESIVE CABLE CLIPS	4
ITEM 10	SELF-ADHESIVE FOAM (200mm)	1
ITEM 11	2.5mm CABLE TIES	4
ITEM 12	150mm LENGTH OF HEATSHRINK	1
ITEM 13	M6 x 5mm LONG BUTTON HEAD BOLTS	2

R&G



LP0285



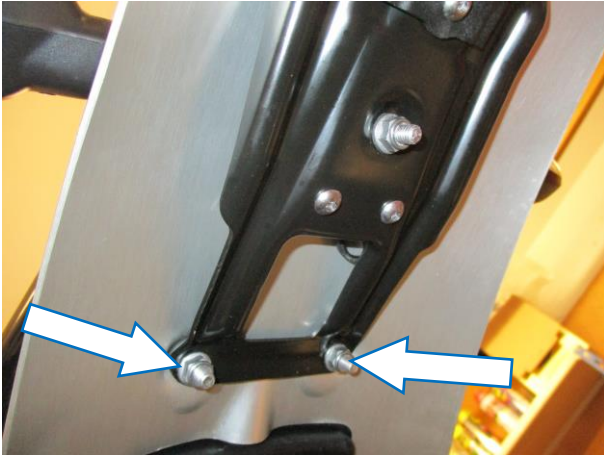
Assembly Diagram



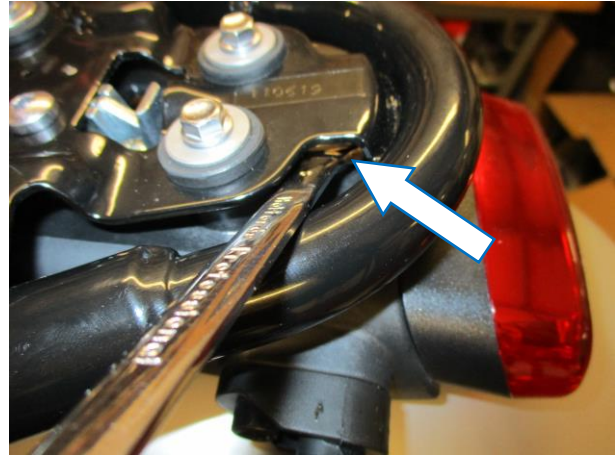
PICTURE 1



PICTURE 2



PICTURE 3



PICTURE 4



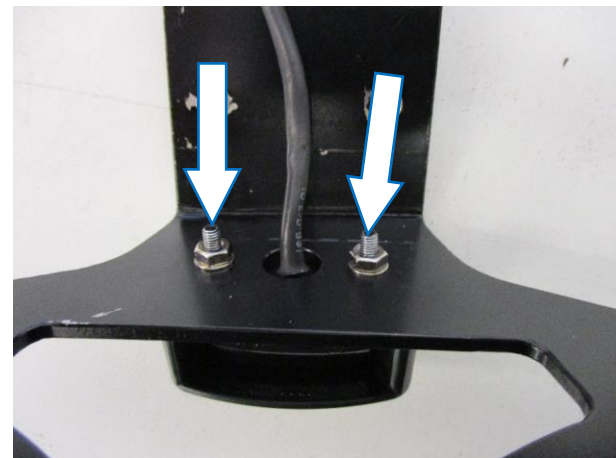
PICTURE 5



PICTURE 6



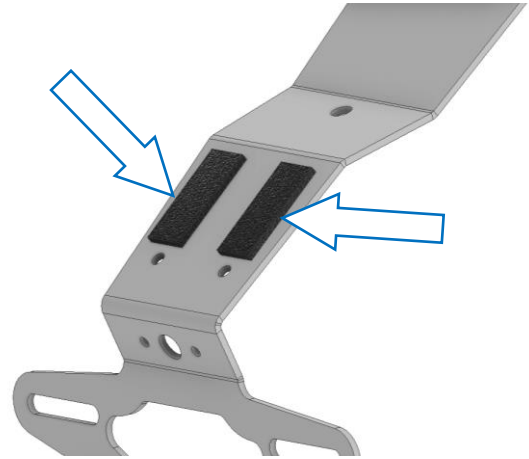
PICTURE 7



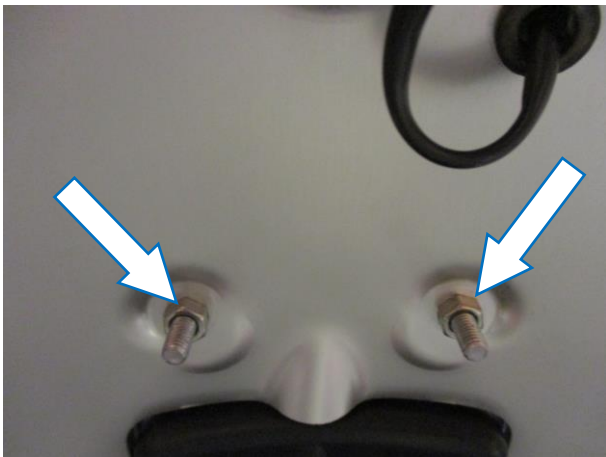
PICTURE 8



PICTURE 9



PICTURE 10



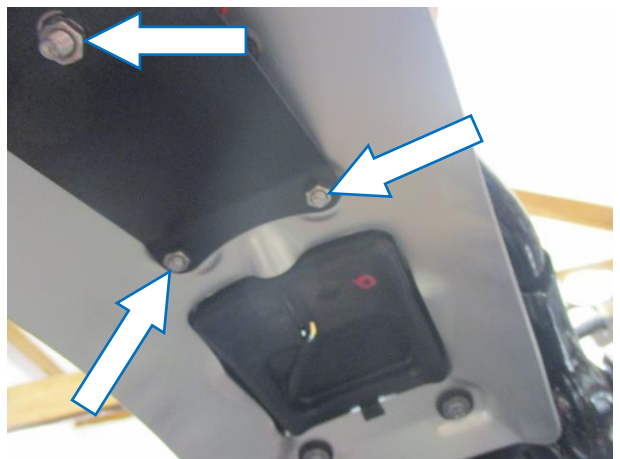
PICTURE 11



PICTURE 12



PICTURE 13

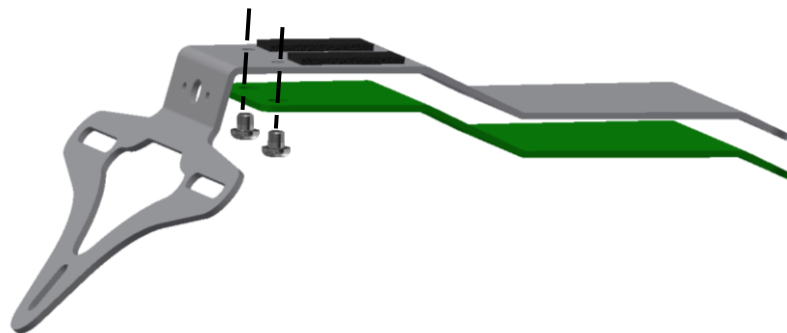


PICTURE 14



FITTING INSTRUCTIONS

- To fit R&G tail tidy, remove the seat using the key as shown in **picture 1**.
- Undo the four bolts that mount the OEM licence plate bracket arrowed in **picture 2** while holding the nuts arrowed in **picture 3**.
- While holding the bolt arrowed in **picture 4** remove the nut arrowed in **picture 5** and carefully lower the original licence plate bracket.
- Disconnect the plug socket arrowed in picture 6.
- Remove the spacer arrowed in picture 7.
- From the kit, take the R&G licence plate bracket (**item 1**) and fit R&G licence plate illuminator (**Item 7**) into the holes on the licence plate bracket and secure with the washers & nuts provided as arrowed in **picture 8**. Apply a little amount of super glue around the top surface of the license plate illuminator and place the licence plate illuminator shroud over the light as shown in **picture 9**.
- Feed the licence plate illuminator wires through the heat-shrink tube (**item 12**) provided and using a suitable heat resource, shrink the tube to protect the wires.
- Cut and stick the self-adhesive foam (**item 10**) to the top surface of **item 1** as shown in **picture 10**.
- Fit and tighten the two plain nuts (**item 2**) to the two forward original bolts as arrowed in **picture 11**.
- Offer the new licence plate support bracket (**item 5**) to the underside of **item 1** as shown below and hold in place with the two M6 bolts (item 13).



- Use the supplied cable ties and self-adhesive clips (**items 9 and 11**) to tidy and hold the wiring in place.
- Connect the new licence plate illuminator to the wiring loom using the supplied connector (**item 6**) as shown in **picture 12**.
- It is a good idea to check the operation of the licence plate illuminator at this stage if the light fails to illuminate, please swap the bullet connectors around.
- Place the original spacer removed earlier over the original forward bolt as shown in **picture 13**.
- Offer the licence plate bracket assembly into position and secure in position using the nyloc nuts and washers (**items 3 and 4**) as shown in **picture 14** (please ensure the wiring is neat/hidden and is not stretched excessively).
- Refit the rider seat as original and licence plate (it may require drilling).
- **IMPORTANT: IF FITTING A FULL-SIZE LICENCE PLATE AND PLACING IT FAR DOWN ON THE LICENCE PLATE HANGER, THERE IS A SMALL CHANCE OF THE LICENCE PLATE HITTING THE BACK WHEEL UNDER HEAVY LOAD AND OVER LARGE BUMPS IN THE**



ROAD. IT IS YOUR RESPONSIBILITY TO CHECK FOR THIS POSSIBILITY AND TAKE AVOIDING ACTION. FAILURE TO CHECK THIS COULD RESULT IN SERIOUS INJURY.

- Depending on local laws, attach enclosed reflector (**item 8**) in an appropriate location.
- Test the licence plate illuminator and all lights before riding.

ISSUE 1 27/03/2020 (NSY)

CONSUMER NOTICE

The catalogue description and any exhibition of samples are only broad indications of the Products and R&G may make design changes which do not diminish their performance or visual appeal and supplying them in such state shall conform to the order. The Buyer acknowledges no representation or warranty (other than as to title) has been given or will apply to the Products other than those in R&G's order or confirmation and the Buyer confirms it has chosen the Products as being of merchantable quality and suitable for its particular purposes. Where R&G fits the Products or undertakes other services it shall exercise reasonable skill and care and rectify any fault free of charge unless the workmanship has been disturbed. The Buyer is responsible for ensuring that the warranty on the motorcycle is not affected by the fitting of the Products. On return of any defective Products R&G shall at its option either supply a replacement or refund the purchase money but shall not be liable if the Products have been modified or used or maintained otherwise than in accordance with R&G's or manufacturer's instructions and good engineering practice or if the defect arises from accident or neglect. Other than identified above and subject to R&G not limiting its liability for causing death and personal injury, it shall not be liable for indirect or consequential loss and otherwise its liability shall be limited to the amounts paid by the Buyer for the Products or the fitting or service concerned. These terms do not affect the Buyer's statutory rights.

R&G RETURNS POLICY (NON-FAULTY GOODS)

Returns must be pre-authorized (if not pre-authorized the return will be rejected). Goods may only be returned direct to us if they were purchased direct from us (customer must prove if necessary). Otherwise to be returned to original vendor. Goods must be in re-sellable condition, in the opinion of R&G. All returns are subject to a 25% restocking and handling fee (25% of the gross value exc. P&P – at the prevailing price at time of purchase). The customer must pay any and all carriage charges. No returns of discontinued products, unless within 14 days of purchase. This policy does not affect your statutory rights and does not refer to faulty goods.

R&G

Unit 1, Shelley's Lane, East Worldham, Alton, Hampshire, GU34 3AQ
Tel: +44 (0)1420 89007 Fax: +44 (0)1420 87301 www.rg-racing.com Email: info@rg-racing.com