



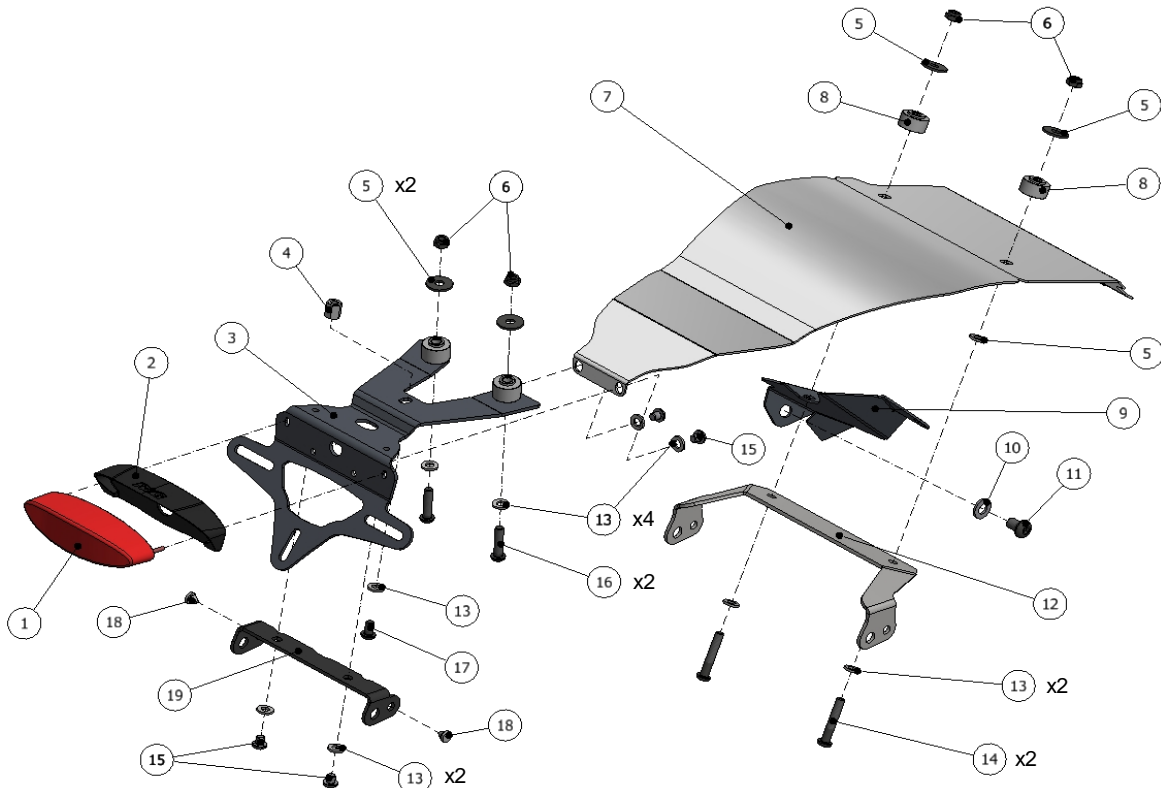
FITTING INSTRUCTIONS FOR LP0237BK LICENCE PLATE BRACKET
TRIUMPH STREET CUP 2017-



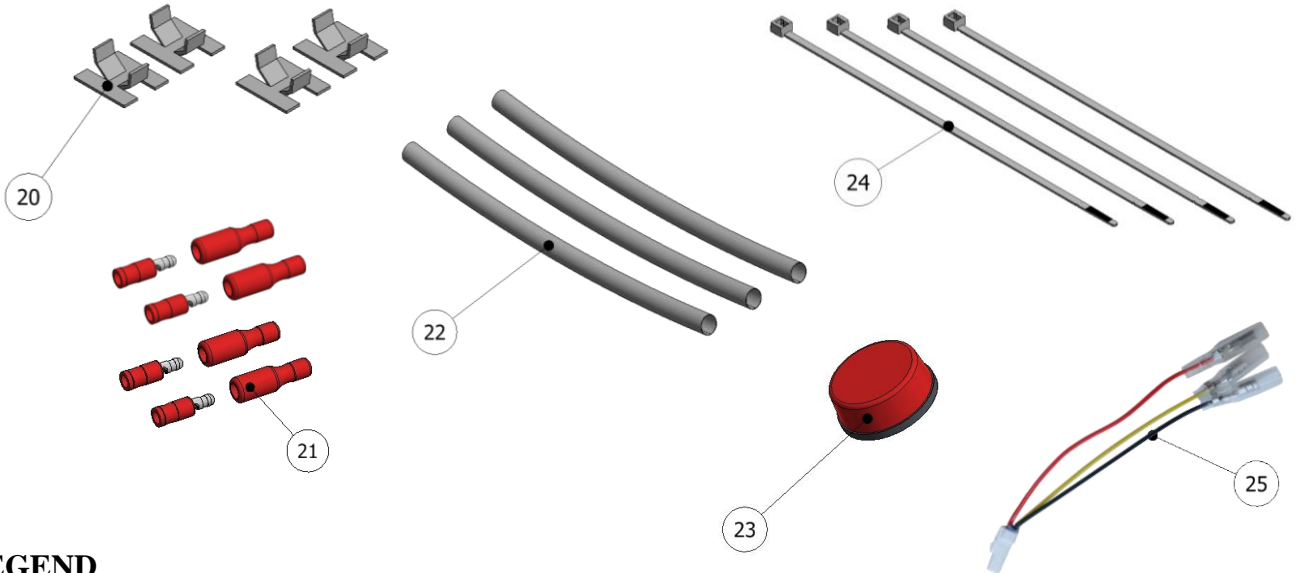
THIS KIT CONTAINS THE ITEMS PICTURED AND LABELLED BELOW.
DO NOT PROCEED UNTIL YOU ARE SURE ALL PARTS ARE PRESENT.

Please note that the way the kit is packed does not necessarily represent the way of mounting to the bike.

THE PARTS SHOWN MAY BE REPRESENTATIVE ONLY (FOR CLARITY OF INSTRUCTIONS ONLY).



R&G



LEGEND

- ITEM 1 = LA0003 TAIL LIGHT (x1).
- ITEM 2 = LA0003 SHROUD (x1).
- ITEM 3 = LICENCE PLATE BRACKET (TB0237 Part 1) (x1).
- ITEM 4 = THREADED SPACER (S0977 – 12mm LONG) (x1).
- ITEM 5 = M6 WASHERS (20mm OD) (x5).
- ITEM 6 = M6 NYLOC NUTS (x4).
- ITEM 7 = UNDERSEAT COVER (TB0237 Part 2) (x1).
- ITEM 8 = SPACER (S0979 – 11.50mm LONG) (x2).
- ITEM 9 = KEY LOCK COVER (TB0203 Part 5) (x1).
- ITEM 10 = M8 WASHERS (17mm OD) (x1).
- ITEM 11 = M8 x 12mm LONG BUTTON HEAD BOLT (x1).
- ITEM 12 = FORWARD INDICATOR BRACKET (TB0203 Part 4) (x1).
- ITEM 13 = M6 WASHERS (12mm OD) (x9).
- ITEM 14 = M6 x 35mm LONG BUTTON HEAD BOLTS (x2).
- ITEM 15 = M6 x 6mm LONG BUTTON HEAD BOLTS (x4).
- ITEM 16 = M6 x 25mm LONG BUTTON HEAD BOLTS (x2).
- ITEM 17 = M6 x 10mm LONG BUTTON HEAD BOLT (x1).
- ITEM 18 = RUBBER BUNGS (x2).
- ITEM 19 = REARWARD INDICATOR BRACKET (TB0203 Part 3) (x1).
- ITEM 20 = SELF-ADHESIVE CABLE CLIPS (x4).
- ITEM 21 = BULLET CONNECTORS (CON0004) (x2).
- ITEM 22 = 150mm LENGTH OF HEATSHRINK (x3).
- ITEM 23 = REFLECTOR (x1).
- ITEM 24 = 2.5mm CABLE TIES (x4).
- ITEM 25 = TAIL LIGHT CONNECTOR (CON0043) (x1).
- ITEM 26 = INDICATOR CONNECTORS (CON0046) (x2).

Please note that in cases where kits are packed with rubber washers holding the components onto the bolt – *the rubber washers should be thrown away!*



TOOLS REQUIRED

- Set of metric Allen keys to include 4, 5 & 6mm A/F size.
 - Torx sockets to include T20 & T30 sizes.
 - 6, 8, 10 & 13mm spanners or sockets.
 - Cable cutters.

MAXIMUM TORQUE SETTINGS

- M4 Bolt = 8 Nm
- M5 Bolt = 12 Nm
- M6 Bolt = 15 Nm
- M8 Bolt = 20 Nm



Picture 1



Picture 2



Picture 3



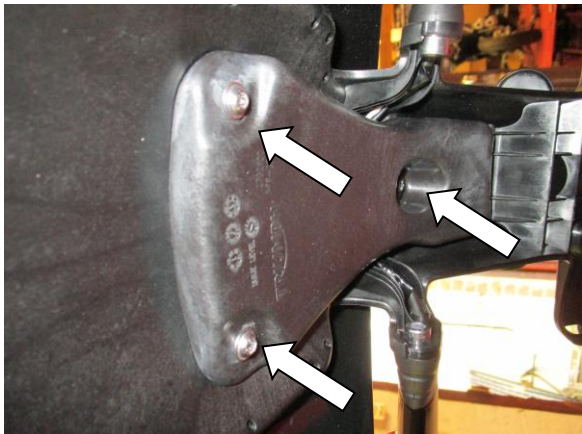
Picture 4



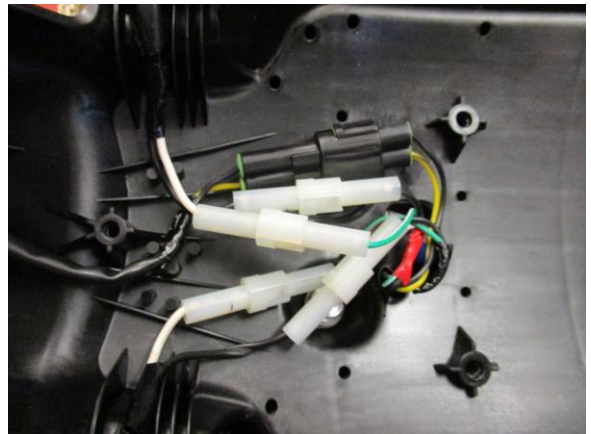
Picture 5



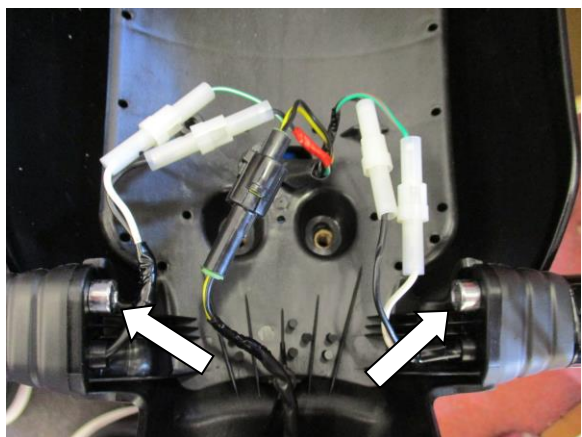
Picture 6



Picture 7



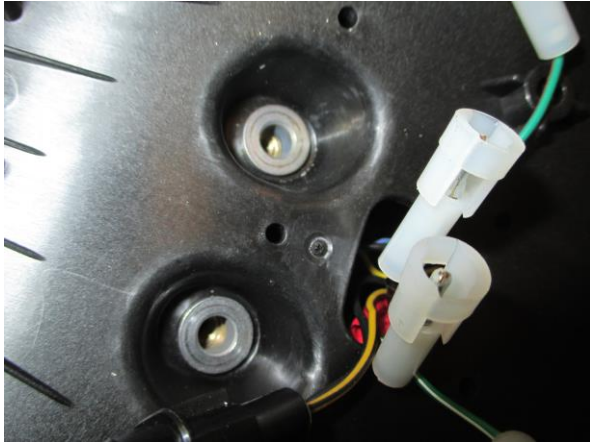
Picture 8



Picture 9



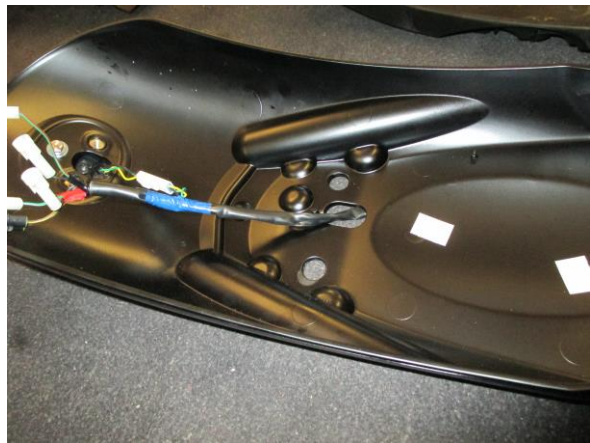
Picture 10



Picture 11



Picture 12



Picture 13



Picture 14



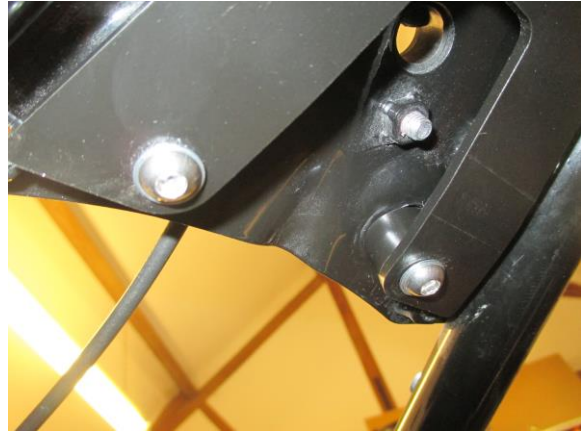
Picture 15



Picture 16



Picture 17



Picture 18



Picture 19



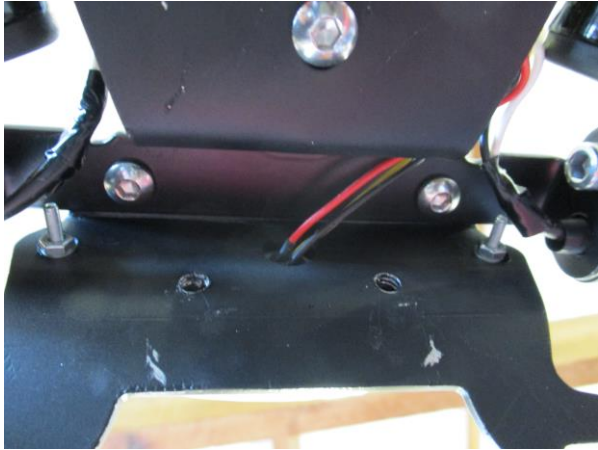
Picture 20



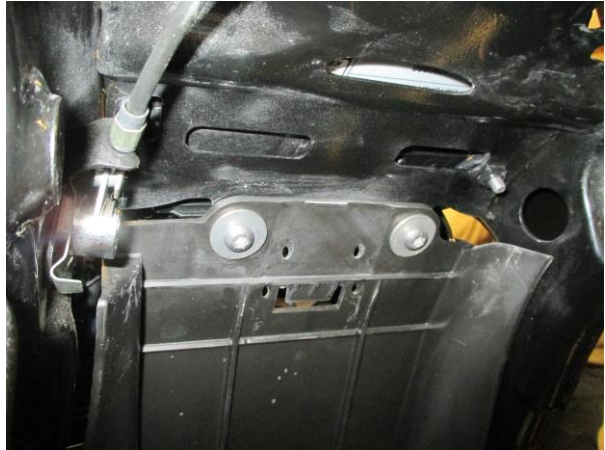
Picture 21



Picture 22



Picture 23



Picture 24



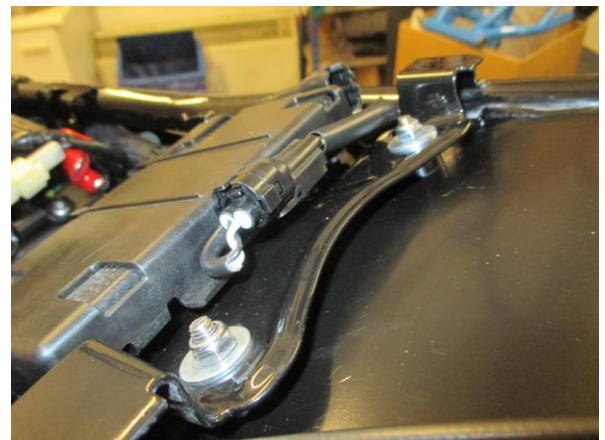
Picture 25



Picture 26



Picture 27



Picture 28



Picture 29



Picture 30



Picture 31



Picture 32



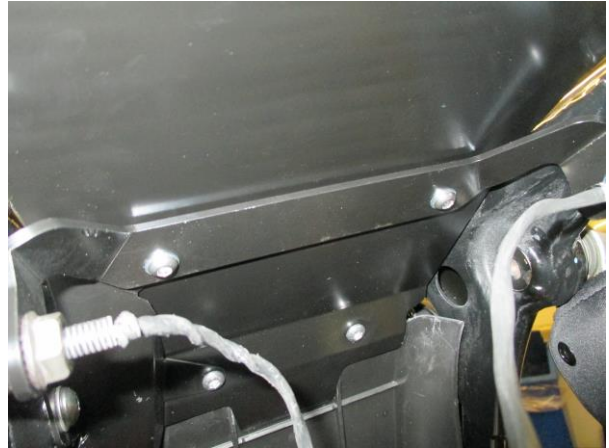
Picture 33



Picture 34



Picture 35



Picture 36



Picture 37



Picture 38



Picture 39



Picture 40



FITTING INSTRUCTIONS

- To fit the R&G tail tidy, remove the seat using the key, as shown in picture 1 and disconnect the tail light/indicator connector that is arrowed in picture 1.
- Remove the two Torx bolts that secure the front of the rear mudguard, as shown in picture 2.
- Remove the two Torx bolts that secure the rear of the rear mudguard in place, as shown in picture 3. Support the mudguard whilst removing the last bolt and then the rear mudguard assembly can be taken away from the bike, as shown in picture 4.
- Remove the four spacers and rubber bungs from the front and rear mounts, as shown in pictures 5 & 6.
- With the rear mudguard off the bike, remove the plastic cover on the underside that hides the wiring by removing the three bolts, as shown in picture 7.
- Disconnect all the wiring connectors, as shown in picture 8.
- If re-using the OEM indicators, remove the bolt that mounts them and remove the indicator from the mudguard assembly, as shown in pictures 9 & 10.
- Remove the two bolts that secure the top and bottom halves of the mudguard, as shown in pictures 11 & 12.
- Disconnect the final wiring connection for the tail light and remove the wiring loom from the rear mudguard, as shown in picture 13.
- Take the R&G Tail Light (item 1 – LA0003) and fit the light shroud (item 2) before fitting one length of heatshrink (item 22) to the wiring.
- Fit one male bullet connector (item 21) to the end of each wire.
- Offer this assembly up to the licence plate bracket (item 3 – TB0237 Part 1), ensuring the threaded bosses on the light fit through the two slots and the wiring fits through the central hole, before fitting the washers and nuts and tightening in place, as shown in pictures 14 & 15.
- Take the threaded spacer (item 4 – S0977 – 12mm long) and fit it to the exposed thread of the rear bolt that secures the locking mechanism in place, as shown in pictures 16 & 17, before tightening.
- Fit the licence plate bracket assembly to the underside of the rear subframe, so that the bosses on top of the swaged spacers locate within the mounting holes on the subframe. Whilst supporting this in place, fit the two M6 x 25mm long button head bolts (item 16) with two M6 washers (item 13) through the two mounting holes from the underside. Fit two of the larger diameter M6 washers, (item 5) and two M6 Nyloc nuts (item 6) to the exposed thread of each bolt on to of the subframe and tighten, as shown in pictures 18 & 19.
- Fit the M6 x 10mm long button head bolt (item 17) with one M6 washer (item 13) through the remaining mounting hole and tighten into the threaded spacer, as shown in picture 20.

If fitting the rearward mounted indicator option

- Take the rearward indicator bracket (item 19 – TB0203 Part 3) and fit the indicators of choice by feeding the wiring through the larger hole on the indicator bracket and locating the indicator boss within the hole, as shown in picture 21.
- If fitting the OEM indicators, re-use the cap head bolt to secure the indicator in place, as shown in picture 21.
- If fitting the R&G Mini Indicators, secure in place using the nut and use the rubber bung supplied (item 18) to blank off the smaller hole. Fit one length of heatshrink (item 22) to the wiring.
- Offer this assembly up to the underside of the licence plate bracket already fitted, ensuring the cut-out in the centre aligns with the slot on the licence plate bracket, before fitting two M6 x 6mm long button head bolts (item 15) with two M6 washers (item 13) through the two mounting holes on the indicator bracket and tighten into the threaded holes on the licence plate bracket, as shown in picture 22.
- Neatly route the wiring, as shown in picture 23.
- Remove the two bolts that secure the plastic cover in place in front of the rear wheel, as shown in picture 24.
- Take the underseat cover (item 7 – TB0237 Part 2) and offer up to the underside of the rear subframe, re-using the OEM bolt and top hat spacer in the same way that it was removed, before loosely tightening, as shown in picture 25.

R&G

Unit 1, Shelley's Lane, East Worldham, Alton, Hampshire, GU34 3AQ

Tel: +44 (0)1420 89007 Fax: +44 (0)1420 87301 www.rg-racing.com Email: info@rg-racing.com



- Fit the remaining two M6 x 6mm long button head bolts (item 15) with two M6 washers (item 13) through the two rear mounting holes and loosely tighten into the threaded holes of the already fitted licence plate bracket, as shown in pictures 26 & 27. *If the underseat cover does not fit easily, loosen the bolts to the licence plate bracket and re-align within the slotted mounts, before re-tightening the bolts.*
- Before tightening all four bolts, fit the two stepped spacers (item 8 – S0979 – 11.50mm long) between the underseat cover and rear subframe cross brace, as shown in picture 28, ensuring the smaller diameter is facing upwards and locates within the slot of the cross brace. *Pressure may need to be applied downward on the cover in order to slide the spacers into position.*
- With the spacers in place, fit the two M6 x 35mm long button head bolts (item 14) with two M6 washers (item 13) through the underseat cover and subframe before fitting two of the larger diameter washers (item 5) and two M6 Nyloc nuts (item 6) to the exposed ends of the thread, as shown in pictures 28 & 29.
- Fully tighten the six bolts that secure the underseat cover in place.
- To fit the key lock cover (item 9 – TB0203 Part 5), remove the two bolts previously fitted that are shown in picture 30 and offer the key lock cover into position, as shown in picture 31. Re-fit the two bolts along with the M8 x 12mm long button head bolt (item 11) and M8 washer (item 10) through the remaining, larger hole in the cover and tighten into the rear of the threaded boss that secures the rear shock absorber in place. *Please note that this cover is unlikely to fit if the bike has grab rails fitted that mount off this same bolt.*
- Ensure the wiring at the rear of the bike for the indicator and tail light is neatly routed, as shown in picture 32.

If fitting the forward mounted indicator option

- Remove the two bolts that secure the plastic cover in place in front of the rear wheel, as shown in picture 24.
- Take the underseat cover (item 7 – TB0237 Part 2) and offer up to the underside of the rear subframe, re-using the OEM bolt and top hat spacer in the same way that it was removed, before loosely tightening, as shown in picture 25.
- Fit the remaining two M6 x 6mm long button head bolts (item 15) with two M6 washers (item 13) through the two rear mounting holes and loosely tighten into the threaded holes of the already fitted licence plate bracket, as shown in pictures 26 & 27. *If the underseat cover does not fit easily, loosen the bolts to the licence plate bracket and re-align within the slotted mounts, before re-tightening the bolts.*
- Before tightening all four bolts, fit the two stepped spacers (item 8 – S0979 – 11.50mm long) between the underseat cover and rear subframe cross brace, as shown in picture 28, ensuring the smaller diameter is facing upwards and locates within the slot of the cross brace. *Pressure may need to be applied downward on the cover in order to slide the spacers into position.*
- With the spacers in place, fit the two M6 x 35mm long button head bolts (item 14) with two M6 washers (item 13) through the underseat cover and subframe before fitting two of the larger diameter washers (item 5) and two M6 Nyloc nuts (item 6) to the exposed ends of the thread, as shown in pictures 28 & 29.
- Fully tighten the six bolts that secure the underseat cover in place.
- To fit the key lock cover (item 9 – TB0203 Part 5), remove the two bolts previously fitted that are shown in picture 30 and offer the key lock cover into position, as shown in picture 31. Re-fit the front, shorter bolt along with the M8 x 12mm long button head bolt (item 11) and M8 washer (item 10) through the remaining, larger hole in the cover and tighten into the rear of the threaded boss that secures the rear shock absorber in place. *Please note that this cover is unlikely to fit if they bike has grab rail fitted that mount off this same bolt.*
- Take the forward indicator bracket (item 12 – TB0203 Part 4) and fit the indicators of choice by feeding the wiring through the larger hole on the indicator bracket and locating the indicator boss within the hole. As shown in picture 33.
- **If fitting the OEM indicators, re-use the cap head bolt to secure the indicator in place.**
- If fitting the R&G Mini Indicators, secure in place using the nut and use the rubber bung supplied (item 18) to blank off the smaller hole. Fit one length of heatshrink (item 22) to the wiring.
- Remove the remaining M6 x 35mm long button head bolt and washer that were previously fitted through the underseat cover and subframe cross brace, as shown in picture 34, and position both M6 x 35mm long button

R&G

Unit 1, Shelley's Lane, East Worldham, Alton, Hampshire, GU34 3AQ

Tel: +44 (0)1420 89007 Fax: +44 (0)1420 87301 www.rg-racing.com Email: info@rg-racing.com



head bolts and washers through the two mounting holes on the indicator bracket from underneath, ensuring to fit the large diameter M6 washer (item 5) over the exposed thread of the right side bolt only, as shown in picture 35.

- Offer this assembly up to the underside of the underseat cover and re-fit the washers and nyloc nuts to the bolts, before re-tightening and securing in place, as shown in picture 36.
- Neatly route the wiring around the side of the underseat cover (*there is a small cut-out to position the wiring*) and use the cable ties/cable clips supplied to neatly route the wiring if required, as shown in picture 37.
- Fully tighten the six bolts that secure the underseat cover in place.
- Ensure the rubber bungs are fitted into the small holes on the indicator bracket if using mini indicators, as shown in picture 38.
- Connect the tail light/indicator loom that was removed from the mudguard assembly previously to the OEM wiring loom at the black connector, before fitting the tail light connector (item 25 – CON0043) to the white connector and then connect the tail light bullet connectors up as follows

OEM GREEN/PURPLE ----- LA0003 RED
OEM YELLOW ----- LA0003 YELLOW
OEM BLACK ----- LA0003 BLACK

- If re-using the OEM indicators, re-connect these the same way that they were removed.
- If using mini indicators, use the two indicator connectors (item 26 – CON0046) to connect the indicators to the OEM loom.
- If fitting R&G Aero Indicators with LED's, the yellow wire on the Aero Indicators connects with the green/red (left indicator) or green/red (right indicator) wire on the OEM loom and the black wire on the Aero Indicators connects with the black wire on the loom. 1x set of RGR0001 resistors (available separately) are required to achieve the correct flash rate.
- If fitting R&G Mini Indicators with bulbs, the black/white wire on the Mini Indicators connects with the green/red (left indicator) or green/red (right indicator) wire on the OEM loom and the black wire on the Mini Indicators connects with the black wire on the loom. No resistors are required.
- If fitting R&G Mini Indicators with LED's, the black/white wire on the Mini Indicators connects with the green/red (left indicator) or green/red (right indicator) wire on the OEM loom and the black wire on the Mini Indicators connects with the black wire on the loom. 1x set of RGR0001 resistors (available separately) are required to achieve the correct flash rate.
- Check for the correct operation of all lights at this stage.
- Tuck the wiring neatly to one side using cable ties/cable clips.
- Ensure the tail tidy is correctly fitted and secured in place before re-fitting the seat unit, *as shown in picture 40*.
- Re-fit the licence plate (it may require drilling).
- Depending on local laws, attach enclosed reflector in an appropriate location.
- Test the licence plate illuminator and all lights before riding.

ISSUE 1 16/11/2017 (HB)

Digital copies of these instructions are available to download from www.rg-racing.com

CONSUMER NOTICE

The catalogue description and any exhibition of samples are only broad indications of the Products and R&G may make design changes which do not diminish their performance or visual appeal and supplying them in such state shall conform to the order. The Buyer acknowledges no representation or warranty (other than as to title) has been given or will apply to the Products other than those in R&G's order or confirmation and the Buyer confirms it has chosen the Products as being of merchantable quality and suitable for its particular purposes. Where R&G fits the Products or undertakes other services it shall exercise reasonable skill and care and rectify any fault free of charge unless the workmanship has been disturbed. The Buyer is responsible for ensuring that the warranty on the motorcycle is not affected by the fitting of the Products. On return of any defective Products R&G shall at its option either supply a replacement or refund the purchase money but shall not be liable if the Products have been modified or used or maintained otherwise than in accordance with R&G's or manufacturer's instructions and good engineering practice or if the defect arises from accident

R&G

Unit 1, Shelley's Lane, East Worldham, Alton, Hampshire, GU34 3AQ

Tel: +44 (0)1420 89007 Fax: +44 (0)1420 87301 www.rg-racing.com Email: info@rg-racing.com



or neglect. Other than identified above and subject to R&G not limiting its liability for causing death and personal injury, it shall not be liable for indirect or consequential loss and otherwise its liability shall be limited to the amounts paid by the Buyer for the Products or the fitting or service concerned. These terms do not affect the Buyer's statutory rights.

R&G RETURNS POLICY (NON-FAULTY GOODS)

Returns must be pre-authorized (if not pre-authorized the return will be rejected). Goods may only be returned direct to us if they were purchased direct from us (customer must prove if necessary). Otherwise to be returned to original vendor. Goods must be in re-sellable condition, in the opinion of R&G. All returns are subject to a 25% restocking and handling fee (25% of the gross value exc. P&P – at the prevailing price at time of purchase). The customer must pay any and all carriage charges. No returns of discontinued products, unless within 14 days of purchase. This policy does not affect your statutory rights and does not refer to faulty goods.