



FITTING INSTRUCTIONS FOR LP0381BK TAIL TIDY



This kit contains the items pictured and labelled over page.

Some parts may be shown for clarity of instructions only.

Do not proceed until you are sure all parts are present.

Please read all instructions before proceeding.

**IF IN ANY DOUBT WHEN FITTING OUR PRODUCTS, CONSULT ONE OF OUR DEALERS OR
HAVE FITTED BY A QUALIFIED TECHNICIAN.**

Please note that the way the kit is packed does not necessarily represent the way of mounting to the bike.

In the event of rubber washers being used to hold components onto bolts, these rubber washers can be thrown away.

DIGITAL COPIES OF THESE INSTRUCTIONS ARE AVAILABLE FROM

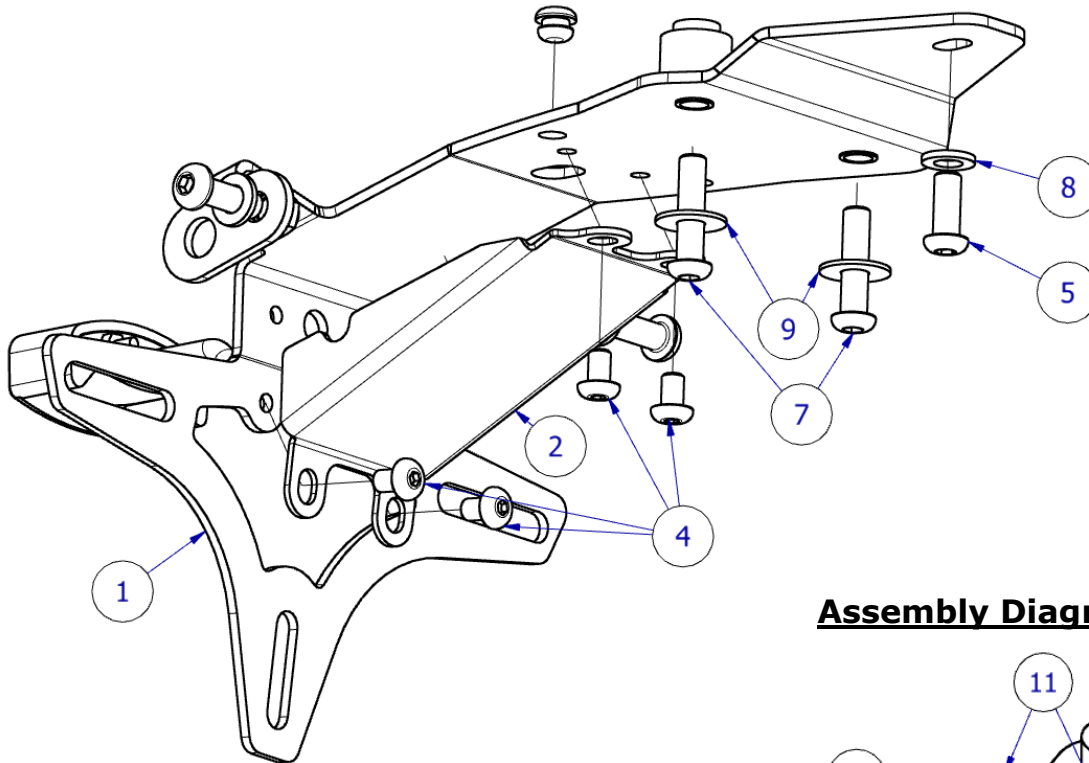
WWW.RG-RACING.COM

R&G

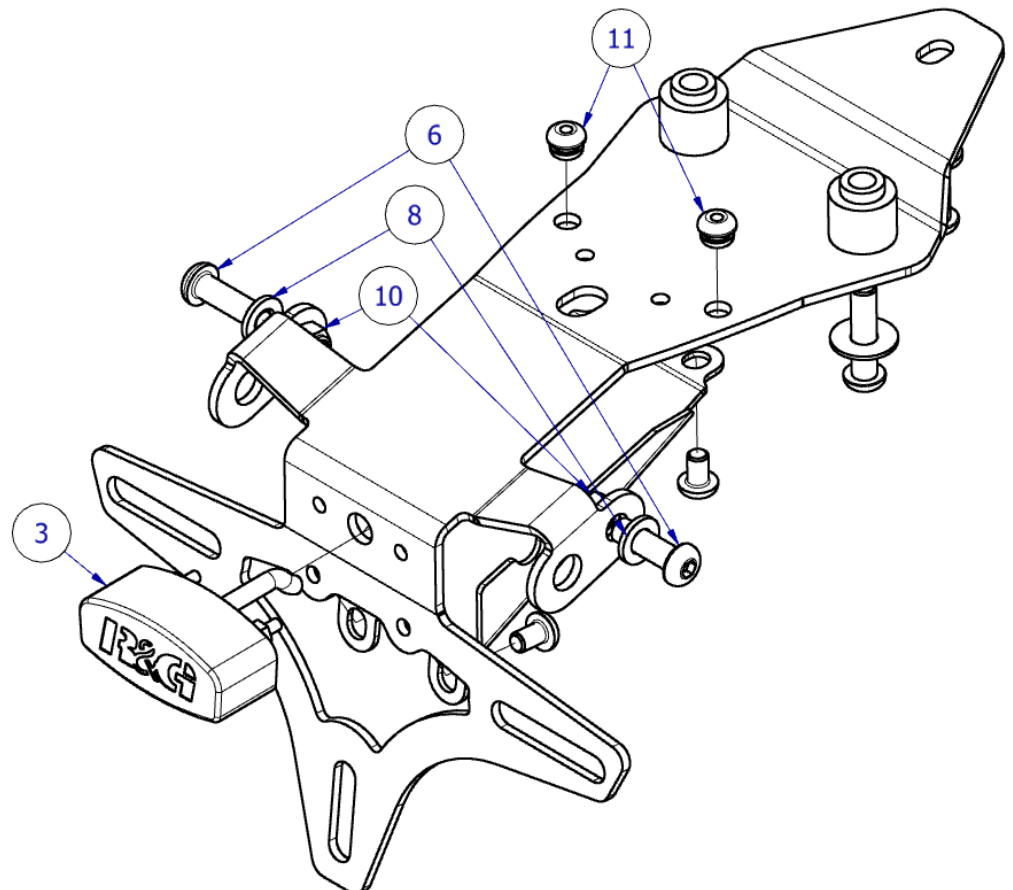
Unit 1, Shelley's Lane, East Worldham, Alton, Hampshire, GU34 3AQ
Tel: +44 (0)1420 89007 www.rg-racing.com Email: info@rg-racing.com



Assembly Diagram 1



Assembly Diagram 2



R&G

Unit 1, Shelley's Lane, East Worldham, Alton, Hampshire, GU34 3AQ
 Tel: +44 (0)1420 89007 www.rg-racing.com Email: info@rg-racing.com



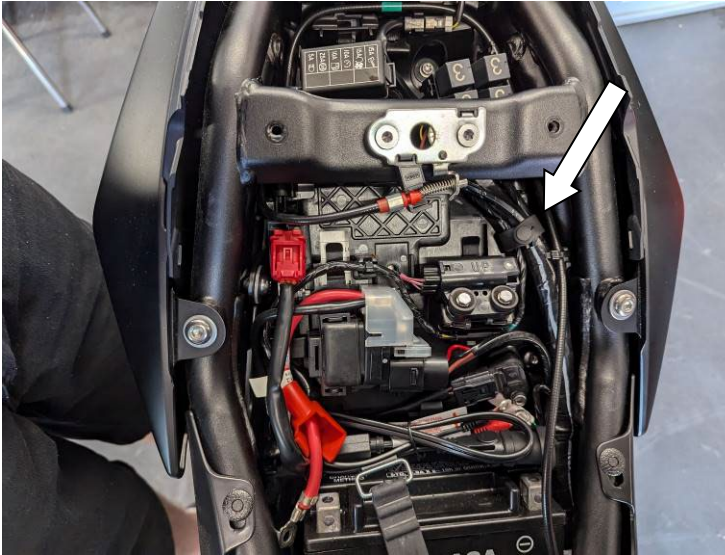
LEGEND

ITEM No.	DESCRIPTION	QTY
ITEM 1	TB0381 PART 1 ASSEMBLY	1
ITEM 2	TB0381 PART 2 COVER PLATE	1
ITEM 3	LA0002 – LICENCE PLATE ILLUMINATOR	1
ITEM 4	M5X5MM BUTTON HEAD BOLT	4
ITEM 5	M6X15MM BUTTON HEAD BOLT	1
ITEM 6	M6X20MM BUTTON HEAD BOLT	2
ITEM 7	M6X30MM BUTTON HEAD BOLT	2
ITEM 8	M6x12MM O/D WASHER	7
ITEM 9	M6x20MM O/D WASHER	2
ITEM 10	M6 NYLOC NUT	4
ITEM 11	RB0015 RUBBER BUNG	2
ITEM 12	HEAT SHRINK 150MM LENGTH	3
ITEM 13	100MM CABLE TIES	3
ITEM 14	LICENCE PLATE LIGHT CONNECTOR – CON0014	1
ITEM 15	REFLECTOR	1

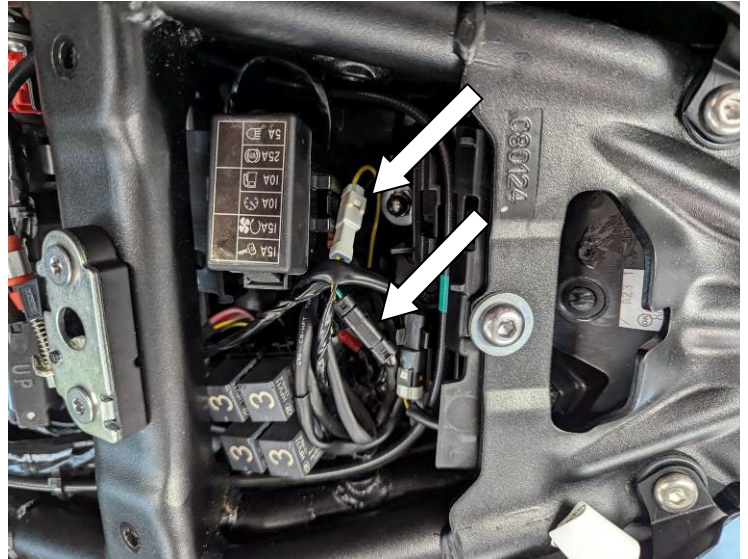
<u>TOOLS REQUIRED</u>	<u>GENERAL TORQUE SETTINGS</u>
<ul style="list-style-type: none"> • T25 Torx tool • 6mm + 10mm sockets or spanners • Small amount of superglue or similar adhesive <ul style="list-style-type: none"> • Electrical wire crimps • Small flat bladed screw driver • Loctite or similar thread locker 	<p>M4 BOLT = 8Nm</p> <p>M5 BOLT = 12Nm</p> <p>M6 BOLT = 15Nm</p> <p>M8 BOLT = 20Nm</p> <p>M10 BOLT = 40Nm</p> <p>M12 BOLT = 40Nm</p>



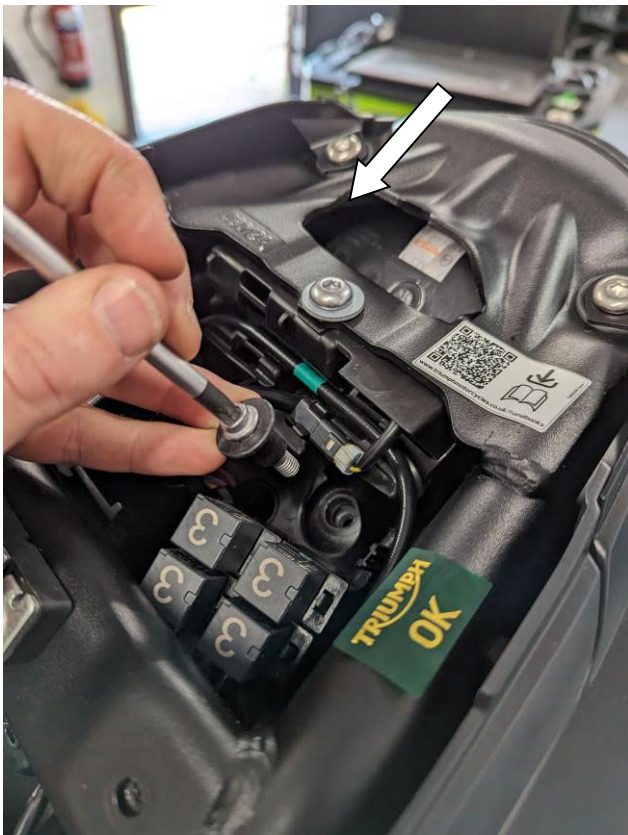
FITTING PICTURES



Picture 1



Picture 2



Picture 3



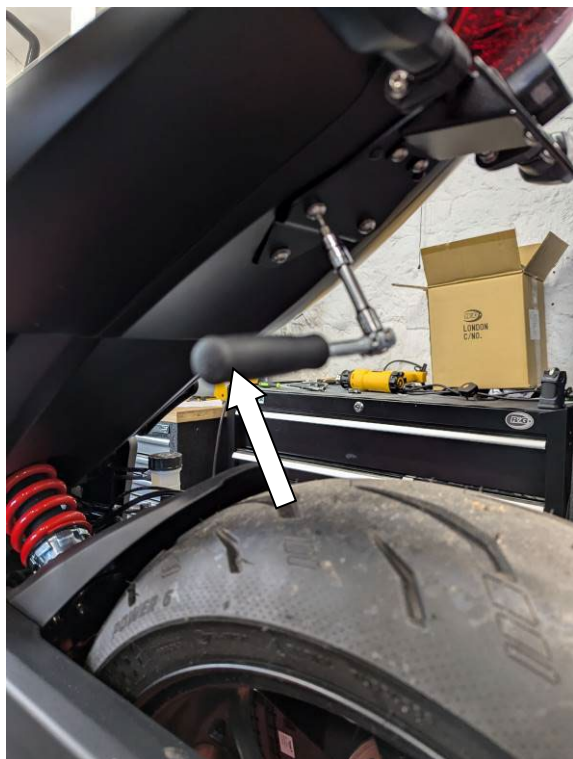
Picture 4



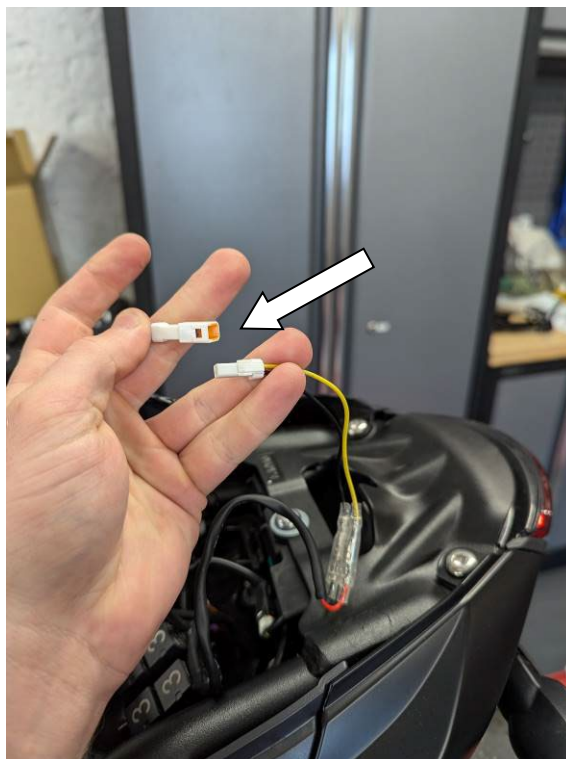
Picture 5



Picture 6



Picture 7



Picture 8



FITTING INSTRUCTIONS

- Remove the rear pillion seat or seat cowl.
- Remove any rubber straps or cable ties holding the indicator and licence plate light connectors in place.
- Inside the tail unit, locate the connections for the OEM indicators and licence plate light as shown in **Pictures 1 & 2** and disconnect.
- While supporting the OEM licence plate hanger, remove the two bolts holding the tail unit to the inside of the tail unit as shown in **picture 3**.
- Remove the last bolt from the underside of the tail unit and carefully remove the OEM licence plate unit threading the loose connectors through the opening of the tail unit.
- Disassemble the OEM licence plate unit by removing the back screws holding 2 pieces together.
- Disconnect the licence plate light connector and remove the loom from the unit for re-use as shown in **picture 4**.
- If re-using, remove the OEM indicators from the unit, noting which side connects to the corresponding connector on the sub-loom.

R&G Tail Tidy Assembly

- Cover the licence plate light (**LA0002 – item 3**) wires in heat shrink (**item 12**) and heat to seal the wires together before using the M4 nuts and washers provided with the licence plate illuminator assembly to fix to the tail bracket (**Item 1**) as shown in Assembly Drawing 1 on page 2 and use the 6mm socket to secure the nuts.
- Assemble the R&G tail tidy as shown in the Assembly Diagram on pages 1 & 2, ensuring to pass the indicator wires & replacement licence plate light through the cover plate and through the hole on **part 1** as shown in **picture 5**.
- If not already fitted, affix the LA0002 light shroud to the light assembly using a small amount of adhesive, this shroud will help direct the light towards the licence plate once fitted.
- Ensure to fit the rubber bungs (**item 11**) into the holes shown with the larger side facing up (these will sit against the bike tail unit)
- The OEM indicator assembly will fit to the R&G tail tidy in the same way as they were removed. Attach the indicators by threading the wires through the tail bracket (**TB0381 - Item 1**). And fix using the m6x 20mm bolts (**item 6**) M6 washers (**item 8**) and 2 x nyloc nuts (**item 10**).
- Affix the cover plate (**item 2**) using the M5 button head bolts (**item 4**). Ensure the indicator wires pass through the gaps left in the side of the cover plate. The wiring should resemble the bracket shown in **picture 6**.
- With the tail tidy now assembled, it can be affixed to the bike as shown in **picture 7**. Offer up to the bike and ensure the locating spacer sit into the metal subframe of the bike. *During this step, ensure the wires do not become trapped or crushed between the tail bracket and mounting bracket surfaces.*
- Push the wires through the opening in the tail unit and pass the indicator connectors and fix in place using 2 x M6x30mm bolts (**item 7**) with larger M6x20mm washers (**item 9**) per bolt. Pass the bolts through the tail tidy and tail unit and secure these bolts with an M6x12mm washer (**item 8**) and an M6 Nyloc nut (**item 10**).
- Fix the remaining mount hole on the underside of the bike using an M6x15mm bolt (**item 5**) and M6x12mm Washer (**item 8**).
- Connect the wires from the replacement licence plate light to the CON014 connector provided (**item 14**) ensuring black to black wires correspond.
- Connect the new connector to the sub-loom as shown in **picture 8**. Connect this to the main wiring loom.

R&G

Unit 1, Shelley's Lane, East Worldham, Alton, Hampshire, GU34 3AQ
Tel: +44 (0)1420 89007 www.rg-racing.com Email: info@rg-racing.com



- Ensure the indicators are connected to the correct side to the original sub loom and reconnect the connectors. *It is a good idea to test the lighting at this stage.*
- Tidy up the wiring loom and use the cable ties to place this in the space within the tail unit and clip the licence plate illuminator connector back into its locator.
- Re-fit the licence plate to the bike (it may require drilling).
- Depending on local laws, fit the reflector provided (item 12) to an appropriate location.

IMPORTANT: FOR SAFETY, ENSURE THE LICENCE PLATE IS PLACED AS HIGH AS POSSIBLE ON THE TAIL TIDY (IT MAY REQUIRE DRILLING). IF FITTING A LICENCE PLATE OF 200MM OR LONGER (INCLUDING ANY SHROUD OR REFLECTOR ATTACHMENT) TO THE BRACKET, BEFORE RIDING, FULLY COMPRESS THE SUSPENSION TO ENSURE NO PART OF THE ASSEMBLY CAN CONTACT THE TYRE WHILE THE VEHICLE IS IN MOTION OR UNDER LOAD. IT IS YOUR RESPONSIBILITY TO CHECK FOR THIS POSSIBILITY AND TAKE AVOIDING ACTION. FAILURE TO CHECK THIS COULD RESULT IN SERIOUS INJURY OR DAMAGE TO THE MOTORCYCLE.

- You can now re-fit the pillion seat.
- At this stage, test all light functionality including the licence plate illuminator before riding.

ISSUE 1 06/09/2024 (DM)

CONSUMER NOTICE

The catalogue description and any exhibition of samples are only broad indications of the Products and R&G may make design changes which do not diminish their performance or visual appeal and supplying them in such state shall conform to the order. The Buyer acknowledges no representation or warranty (other than as to title) has been given or will apply to the Products other than those in R&G's order or confirmation and the Buyer confirms it has chosen the Products as being of merchantable quality and suitable for its particular purposes. Where R&G fits the Products or undertakes other services it shall exercise reasonable skill and care and rectify any fault free of charge unless the workmanship has been disturbed. The Buyer is responsible for ensuring that the warranty on the motorcycle is not affected by the fitting of the Products. On return of any defective Products R&G shall at its option either supply a replacement or refund the purchase money but shall not be liable if the Products have been modified or used or maintained otherwise than in accordance with R&G's or manufacturer's instructions and good engineering practice or if the defect arises from accident or neglect. Other than identified above and subject to R&G not limiting its liability for causing death and personal injury, it shall not be liable for indirect or consequential loss and otherwise its liability shall be limited to the amounts paid by the Buyer for the Products or the fitting or service concerned. These terms do not affect the Buyer's statutory rights.

R&G RETURNS POLICY (NON-FAULTY GOODS)

Returns must be pre-authorized (if not pre-authorized the return will be rejected). Goods may only be returned direct to us if they were purchased direct from us (customer must prove if necessary). Otherwise to be returned to original vendor. Goods must be in re-sellable condition, in the opinion of R&G. All returns are subject to a 25% restocking and handling fee (25% of the gross value exc. P&P – at the prevailing price at time of purchase). The customer must pay any and all carriage charges. No returns of discontinued products, unless within 14 days of purchase. This policy does not affect your statutory rights and does not refer to faulty goods.

R&G

Unit 1, Shelley's Lane, East Worldham, Alton, Hampshire, GU34 3AQ
Tel: +44 (0)1420 89007 www.rg-racing.com Email: info@rg-racing.com