



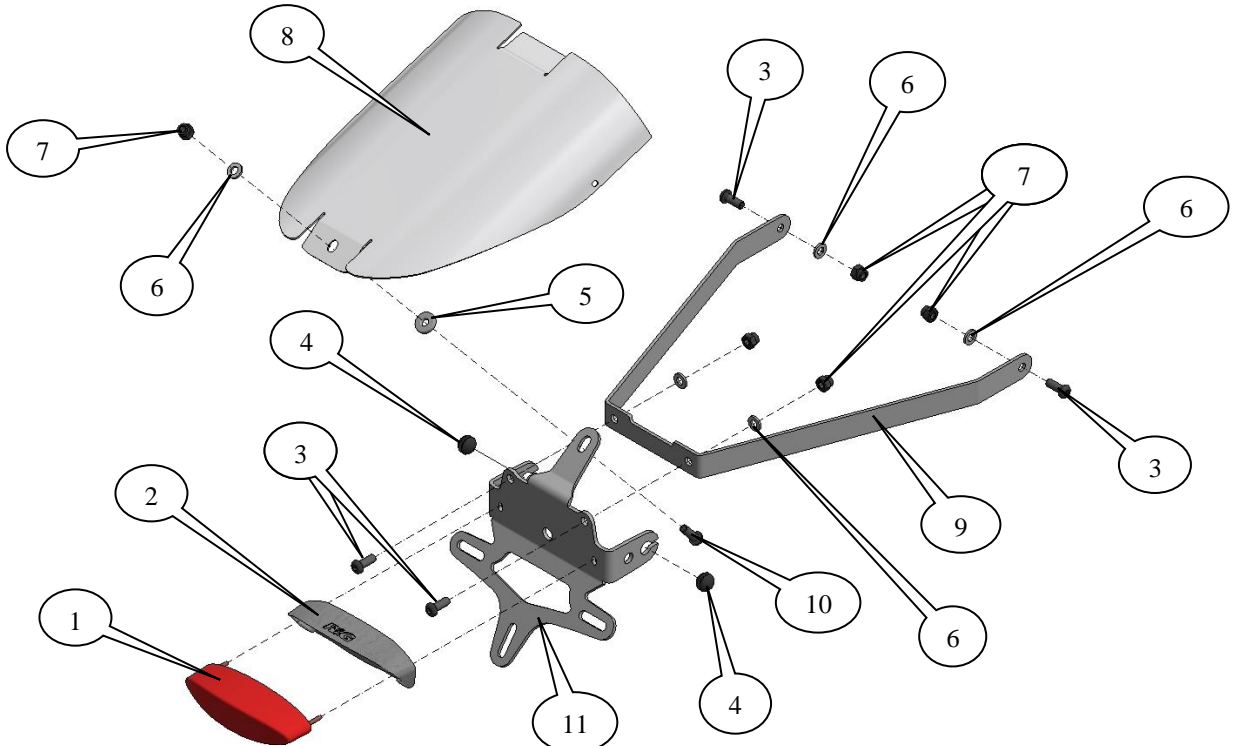
FITTING INSTRUCTIONS FOR LP0188BK LICENCE PLATE BRACKET
HARLEY DAVIDSON STREET 500 '14- & STREET 750 '15-



THIS KIT CONTAINS THE ITEMS PICTURED AND LABELLED BELOW.
DO NOT PROCEED UNTIL YOU ARE SURE ALL PARTS ARE PRESENT.

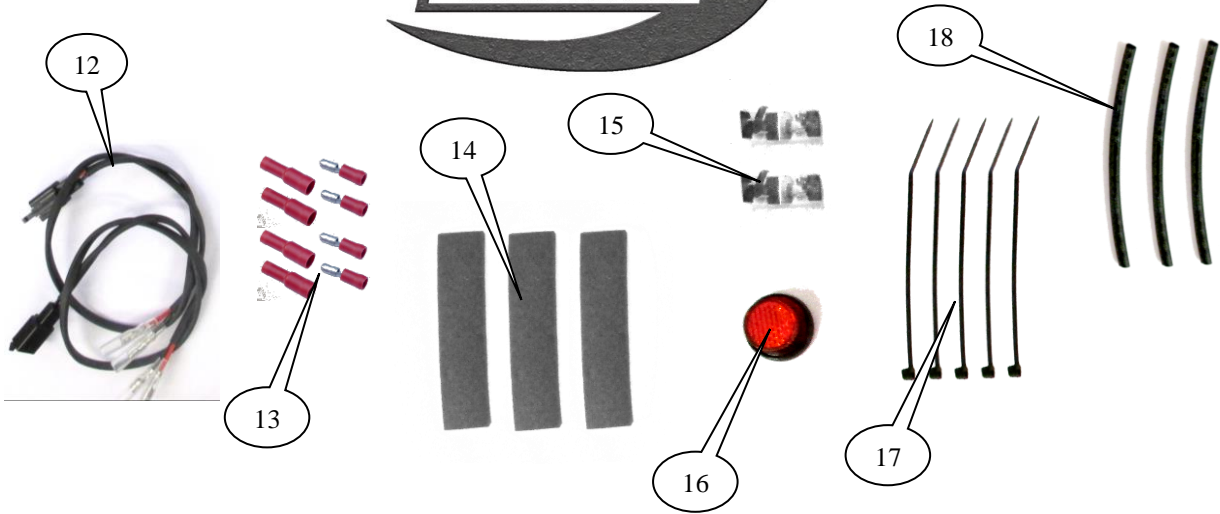
Please note that the way the kit is packed does not necessarily represent the way of mounting to the bike.

THE PARTS SHOWN MAY BE REPRESENTATIVE ONLY (FOR CLARITY OF INSTRUCTIONS ONLY).



R&G Racing

Unit 1, Shelley's Lane, East Worldham, Alton, Hampshire, GU34 3AQ
Tel: +44 (0)1420 89007 Fax: +44 (0)1420 87301 www.rg-racing.com Email: info@rg-racing.com



LEGEND

- ITEM 1 = LA0003 TAIL LIGHT (x1).
ITEM 2 = LA0003 LIGHT SHROUD (x1).
ITEM 3 = M6 x 16mm LONG BUTTON HEAD BOLTS (x4).
ITEM 4 = RUBBER BUNGS (RB80-30-00) (x2).
ITEM 5 = SPACER (S0456 – 3.50mm LONG) (x1).
ITEM 6 = M6 WASHER (x5).
ITEM 7 = M6 NYLOC NUTS (x5).
ITEM 8 = COVER (TB0188 Part 3) (x1).
ITEM 9 = MOUNTING BRACKET (TB0188 Part 1) (x1).
ITEM 10 = M6 x 20mm LONG BUTTON HEAD BOLTS (x1).
ITEM 11 = LICENCE PLATE BRACKET (TB0188 Part 2) (x1).
ITEM 12 = INDICATOR CONNECTORS (CON0007) (x2).
ITEM 13 = TAIL LIGHT CONNECTORS (CON0004) (x2).
ITEM 14 = SELF-ADHESIVE NEOPRENE FOAM (x3).
ITEM 15 = SELF-ADHESIVE CABLE CLIPS (x4).
ITEM 16 = REFLECTOR (x1).
ITEM 17 = 2.5mm CABLE TIES (x5).
ITEM 18 = 150mm LENGTH OF HEATSHRINK (x3).

Please note that in cases where kits are packed with rubber washers holding the components onto the bolt – *the rubber washers should be thrown away!*

TOOLS REQUIRED

- Set of metric Allen keys to include 4 & 6mm A/F size.
 - 6, 10 & 13mm spanners or sockets.
 - Small flat head screwdriver.
 - Phillips screwdriver.
 - Cable cutters.



MAXIMUM TORQUE SETTINGS

- M4 Bolt = 8 Nm
- M5 Bolt = 12 Nm
- M6 Bolt = 15 Nm
- M8 Bolt = 20 Nm



Picture 1



Picture 2



Picture 3



Picture 4



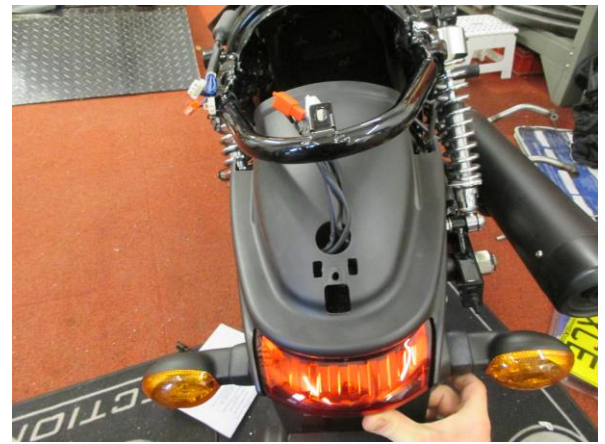
Picture 5



Picture 6



Picture 7



Picture 8



Picture 9



Picture 10



Picture 11



Picture 12



Picture 13



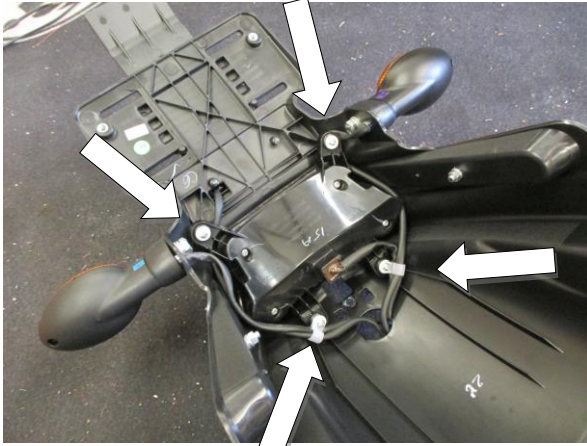
Picture 14



Picture 15



Picture 16



Picture 17



Picture 18



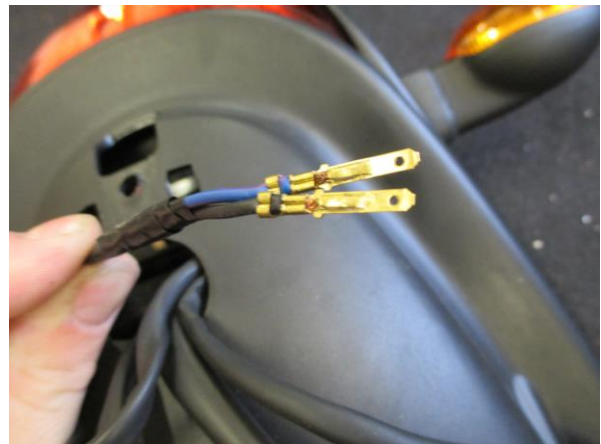
Picture 19



Picture 20



Picture 21



Picture 22



Picture 23



Picture 24



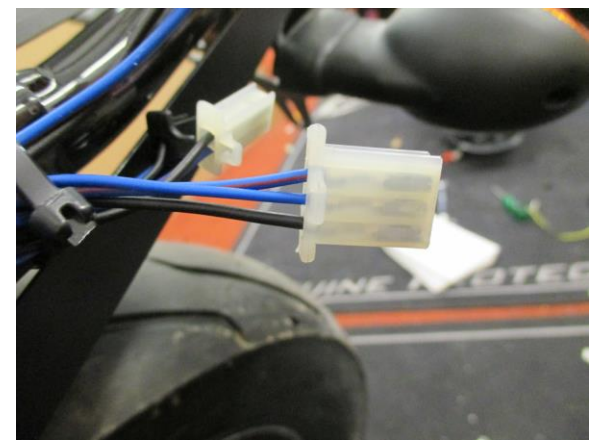
Picture 25



Picture 26



Picture 27



Picture 28



Picture 29



Picture 30



Picture 31



Picture 32



Picture 33



Picture 34



Picture 35



Picture 36



Picture 37



Picture 38



Picture 39



FITTING INSTRUCTIONS

- To fit the R&G tail tidy, remove the seat by removing the bolt arrowed in picture 1. *The seat needs to be fed through the grab strap in order to slide the seat rearward to remove from the front mounts.*
- With the seat off, remove the two bolts on both sides of the rear cowl and then the metal cover and framework underneath can be removed from the bike, as shown in pictures 3 & 4.
- Remove the rear cowl from the bike, as shown in picture 5. Disconnect the tail light & indicator wiring (*it is advisable to mark on the connectors which pair match, to aid re-fitting*).
- Remove the two small bolts on either side of the bike that mount the plastic OEM licence plate hanger to the frame, as shown in picture 6.
- Remove the remaining bolt at the rear that locates through the frame and into the clip on the OEM licence plate hanger, as shown in picture 7.
- The OEM licence plate hanger can now be slid forward off this clip and gently lowered away from the bike, as shown in picture 8.
- Remove the clip from the rear mount on the frame, as shown in picture 9.
- Take the R&G mounting bracket (item 9 – TB0188 Part 1) and offer it up to the bike as shown in pictures 10, 11 & 12 (*ensuring the cut-out on the rear face is upwards*). Fit one M6 x 16mm long button head bolt, M6 washer & M6 nyloc nut through the mounting hole on both sides of the bike with the mounting bracket on the inside of the frame, as shown.
- Take the R&G Licence Plate Bracket and offer it into position as shown in picture 13. Use the remaining two M6 x 16mm long button head bolts, M6 washer and M6 nyloc nuts to secure onto the mounting bracket as shown in picture 13.
- The upper mounting tab on the licence plate bracket should sit somewhere near to the mounting bracket on the frame, as shown in picture 14.
- Take the R&G Tail Light (item 1 – LA0003) and fit the shroud (item 2) as shown in picture 15.
- Take this light assembly and fit it to the licence plate bracket, as shown in picture 16, before fitting the washer and nuts on the rear and tightening.

If fitting OEM Indicators

- Remove the OEM indicators from the OEM licence plate hanger by firstly removing the four screws that secure the cable clips and rear light in place, to allow the cables to be released, as arrowed in pictures 17 & 18.
- Remove the bolt that secures each indicator in place, as shown in picture 19.
- In order to get the indicator free from the licence plate hanger and the connector through the hole, the connector must be removed from the wiring. To do this, use a small electrical screwdriver inside the connector and push the small prong on each of the wiring ends to one side, whilst gently pulling the wiring from the rear of the connector. The wires should come out of the connector, one at a time, as shown in pictures 20, 21, 22 & 23. (*Its advisable to mark on the connector which wire goes either side*).
- Pull the wiring through the hole of the OEM licence plate hanger and before fitting the indicators to the R&G tail tidy, re-fit the connectors onto the wires by simply pushing them into the correct slots.
- Fit the indicators to the tail tidy indicator mounts, with the wiring fitting through the hole with the slot, and re-fit the original bolt to secure in place, as shown in pictures 24 & 25.



If fitting R&G Mini Indicators

- To fit the R&G Mini Indicators, first fit the rubber bung (item 4) into the hole with the slot and then the R&G Mini Indicator through the remaining hole, before fitting the nut and tightening, as shown in pictures 26 & 27.
- Fit the indicator connectors (item 12 – CON0007) to the R&G Mini Indicators using the bullet connector and then connect to the original wiring on the bike.

- In order to fit the R&G tail light to the main wiring loom, the OEM tail light wiring needs to be “cut and shut”.
- Take the wiring with the OEM tail light connector on, as shown in picture 28, and cut the wires, about 2cm up from the connector. Strip back the ends of the three wires and fit three male bullet connectors supplied (item 13 – CON0004).
- Connect three female bullet connectors to the LA0003 tail light wiring in order to match those already fitted to the OEM loom. *If any lights do not illuminate, switch the bullet connectors around.*
- Bundle the wires together and use a couple of cable ties (item 17) to keep neatly together.
- Take the R&G tail tidy cover (item 8 – TB0188 Part 3) and fit three lengths of the self-adhesive foam (item 14) to the front edge on both sides, as shown in pictures 29 & 30.
- Offer the cover up to the bike by sliding the front central tab underneath the lip on the rear of the frame and allowing the two sides to sit above the lip, as shown in pictures 31 & 32.
- Ensure the wiring is routed as shown in picture 33 and that the rear mounting hole on the cover aligns with the rear mounting hole on the frame.
- Take the remaining M6 x 20mm long button head bolt (item 10) and the spacer (item 5 – S0456 – 3.50mm long) and fit through the mounting hole of the licence plate bracket from underneath, as shown in picture 34.
- Rotate this upwards so the exposed end of the bolt that locates through the mounting hole in the rear of the frame, then through the hole in the cover and finally fit the remaining M6 washer and M6 nyloc nut onto the bolt, before tightening, as shown in picture 35.
- Take two cable ties and fit through the slots on either side of the cover and loop around between the frame and the frame gusset, as shown in picture 36, before tightening evenly.
- Re-connect the wiring connectors and use the self-adhesive cable clips (item 15) to neaten any excess wiring on the top of the cover, as shown in picture 37.
- Re-fit the rear cowl to the bike along with the two side plates, covers and four bolts in the opposite way to how they were removed.
- Re-fit the seat, ensuring to slide it through the grab strap and re-fit the rear mounting bolt, as shown in picture 39.
- Ensure the tail tidy is securely mounted and all bolts are fully tightened.
- Re-fit the licence plate (it may require drilling).
- Depending on local laws, attach enclosed reflector in an appropriate location.
- Test the license plate illuminator and all lights before riding.

ISSUE 1 11/02/2016 (AR)