



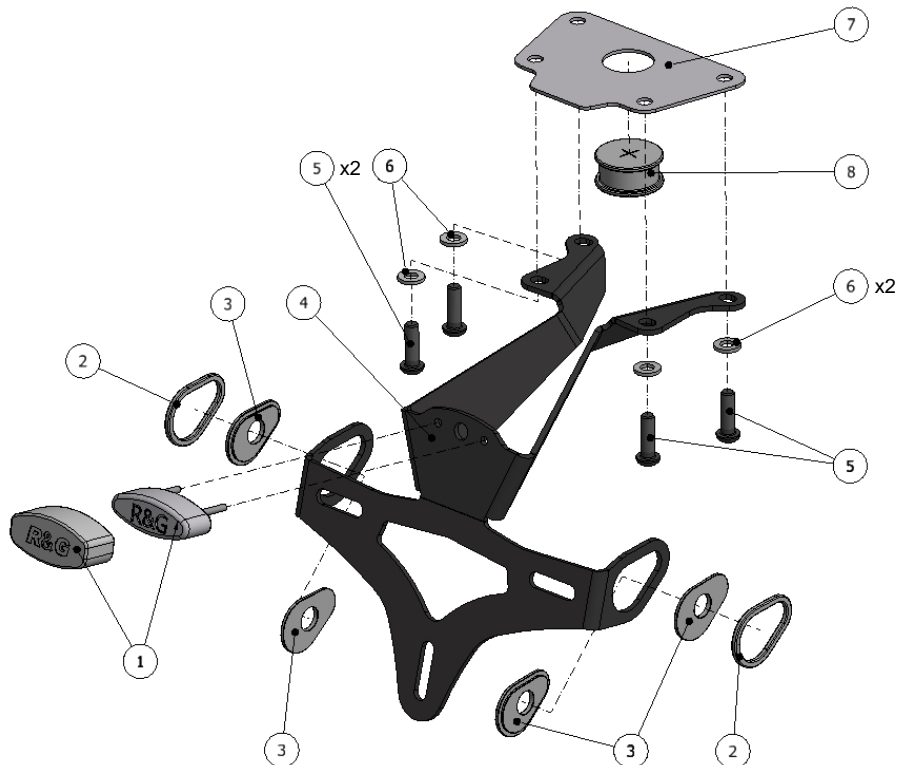
FITTING INSTRUCTIONS FOR LP0208BK LICENCE PLATE BRACKET
YAMAHA MT-09 UP TO 2016 / MT-09 TRACER '15-'17 / FJ-09 (NOT COMPATIBLE
WITH TRACER GENUINE LUGGAGE RAILS) / MT-07 / TRACER 700



THIS KIT CONTAINS THE ITEMS PICTURED AND LABELLED BELOW.
DO NOT PROCEED UNTIL YOU ARE SURE ALL PARTS ARE PRESENT.

Please note that the way the kit is packed does not necessarily represent the way of mounting to the bike.

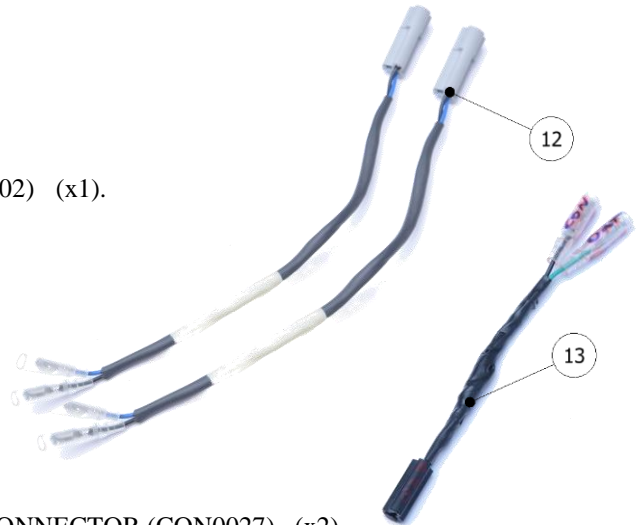
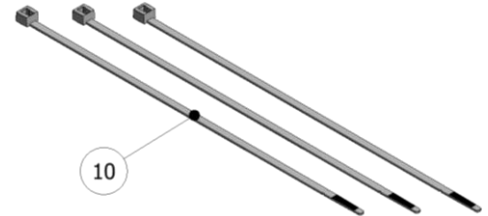
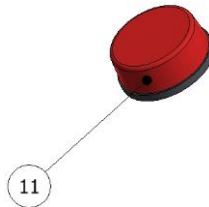
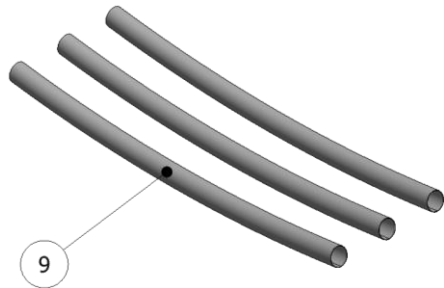
THE PARTS SHOWN MAY BE REPRESENTATIVE ONLY (FOR CLARITY OF INSTRUCTIONS ONLY).



R&G Racing

Unit 1, Shelley's Lane, East Worldham, Alton, Hampshire, GU34 3AQ

Tel: +44 (0)1420 89007 Fax: +44 (0)1420 87301 www.rg-racing.com Email: info@rg-racing.com



LEGEND

- ITEM 1 = LICENCE PLATE ILLUMINATOR & SHROUD (LA0002) (x1).
 ITEM 2 = INDICATOR SPACERS (I0037) (x2).
 ITEM 3 = INDICATOR ADAPTORS (I0016) (x4).
 ITEM 4 = LICENCE PLATE BRACKET (TB0178) (x1).
 ITEM 5 = M6 x 20mm LONG BUTTON HEAD BOLTS (x4).
 ITEM 6 = M6 WASHERS (x4).
 ITEM 7 = COVER PLATE (TB0208 COVER) (x1).
 ITEM 8 = RUBBER BUNG (RB0004) (x1).
 ITEM 9 = 150mm LENGTH OF HEATSHRINK (x3).
 ITEM 10 = 2.5mm CABLE TIES (x3).
 ITEM 11 = REFLECTOR (x1).
 ITEM 12 = LICENCE PLATE ILLUMINATOR & INDICATOR CONNECTOR (CON0027) (x2).
 ITEM 13 = INDICATOR CONNECTOR (CON0028) (x1).

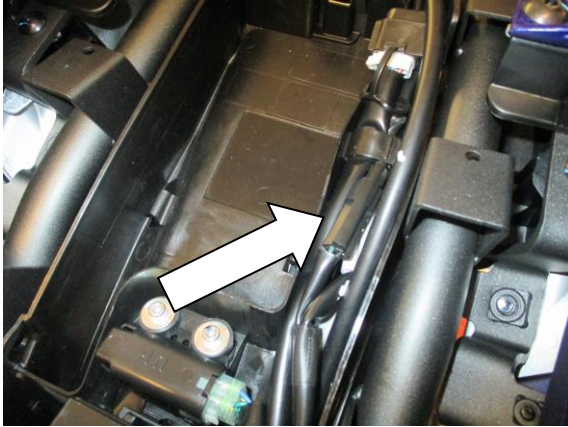
Please note that in cases where kits are packed with rubber washers holding the components onto the bolt – *the rubber washers should be thrown away!*

TOOLS REQUIRED

- Set of metric Allen keys to include 4, 5mm A/F size.
 - 6 & 13mm spanners or sockets.
 - Cable cutters.

MAXIMUM TORQUE SETTINGS

- M4 Bolt = 8 Nm
- M5 Bolt = 12 Nm
- M6 Bolt = 15 Nm
- M8 Bolt = 20 Nm



Picture 1



Picture 2



Picture 3



Picture 4



Picture 5



Picture 6



Picture 7



Picture 8



Picture 9



Picture 10



Picture 11



Picture 12



Picture 13



Picture 14



Picture 15



Picture 16

FITTING INSTRUCTIONS

- To fit the R&G tail tidy, remove the seat using the key and disconnect the three licence plate illuminator/indicator connectors that are arrowed in picture 1 and shown in picture 2.
- Remove the clip and cut the cable tie that bundle the wiring together.
- Remove the four bolts that mount the underside of the OEM licence plate bracket to the bike, as shown in picture 3 and gently remove from the bike, feeding the wiring out in the process.
- Take the licence plate bracket (item 4 – TB0178) and fit the R&G tail light (item 1 – LA0002) to the bracket, as shown in pictures 4 & 5. Fit one length of heatshrink to the wires, tighten the nuts on the rear and use a small amount of super glue to secure the light shroud in place, as shown in picture 5.
- Take the cover plate (item 7 – TB0208 Cover) and fit the rubber bung (item 8 – RB0004) through the large hole from either side, as shown in picture 6.
- Offer the two assemblies together, with the cover plate positioned on top of the four mounting holes of the licence plate bracket and fit the four M6 x 25mm long button head bolts (item 5) and four M6 washers (item 6) through the licence plate bracket and then through the cover plate, as shown in picture 7. Ensure the rubber bung is positioned so the internal recess faces downwards when mounted on the bike.



- Take this assembly and offer up to the underside of the bike, tightening the four bolts into the threaded bosses inside the tail unit, as shown in picture 8.

If fitting Mini Indicators

- To fit the R&G Mini Indicators, fit one length of heatshrink to the wires of each indicator.
- Position two indicator adaptors (item 3 – I0037) onto the wiring of each indicator, ensuring the sides facing each other have the raised centre profile.
- Fit either indicator through the large slot on the side of the tail tidy, locating the indicator adaptors either side of the metal bracket, before fitting the nut onto the exposed thread and tightening, as shown in pictures 9 & 10.

If fitting OEM Indicators

- Remove the plastic cover from the OEM licence plate bracket by gently spreading the rear to release the clips and then the front will dismount and the cover can be removed, as shown in picture 11.
- To remove the OEM indicator, remove the plastic mounting plate from the rubber housing, as shown in picture 12, before removing the rubber mount from the licence plate bracket, as shown in picture 13. Feed the wiring out to remove.
- Fit one indicator spacer (item 2 – I0016) to both rubber indicator mounts, before fitting into the large slot on either side of the tail tidy as shown in pictures 14 & 15. Secure in place by reusing the plastic mounting plate in the same way that it was removed.
- Feed the licence plate illuminator and indicator wiring up through the rubber bung into the tail unit and use the cable ties provided (item 10) to neatly bundle the wires together, as shown in picture 16.
- Connect one of the licence plate illuminator connectors (item 12 – CON0027) to the two bullet connectors fitted to the licence plate illuminator wiring with the connector on the other end fitting onto the black female connector on the OEM loom (*if illumination fails, reverse the bullet connectors*).
- If fitting mini indicators, use the two remaining connectors (item 12 & 13 – CON0027 & CON0028) and connect the bullet connectors to the indicator wiring, with the connectors fitting to the remaining connectors on the OEM loom (*if illumination fails, reverse the bullet connectors*).
- If re-fitting the OEM indicators, re-connect the connectors on the indicator wiring to the matching connector on the OEM loom.
- Check for the correct operation of all lights.
- Re-fit the wiring clip and neatly route the wiring with the tail unit.
- Ensure the tail tidy is securely mounted and all bolts are fully tightened.
- Re-fit the seat.
- Re-fit the licence plate (it may require drilling).
- Depending on local laws, attach enclosed reflector in an appropriate location.
- Test the licence plate illuminator and all lights before riding.

ISSUE 1 22/07/2016 (AR)

Digital copies of these instructions are available to download from www.rg-racing.com

CONSUMER NOTICE

The catalogue description and any exhibition of samples are only broad indications of the Products and R&G may make design changes which do not diminish their performance or visual appeal and supplying them in such state shall conform to the order. The Buyer acknowledges no representation or warranty (other than as to title) has been given or will apply to the Products other than those in R&G's order or confirmation and the Buyer confirms it has chosen the Products as being of merchantable quality and suitable for its particular purposes. Where R&G fits the Products or undertakes other services it shall exercise reasonable skill and care and rectify any fault free of charge unless the workmanship has been disturbed. The Buyer is responsible for ensuring that the warranty on the motorcycle is not affected by the fitting of the Products. On return of any defective Products R&G shall at its option either supply a replacement or refund the purchase money but shall not be liable if the Products have been modified or used or maintained otherwise than in accordance with R&G's or manufacturer's instructions and good engineering practice or if the defect arises from accident

R&G Racing

Unit 1, Shelley's Lane, East Worldham, Alton, Hampshire, GU34 3AQ

Tel: +44 (0)1420 89007 Fax: +44 (0)1420 87301 www.rg-racing.com Email: info@rg-racing.com



or neglect. Other than identified above and subject to R&G not limiting its liability for causing death and personal injury, it shall not be liable for indirect or consequential loss and otherwise its liability shall be limited to the amounts paid by the Buyer for the Products or the fitting or service concerned. These terms do not affect the Buyer's statutory rights.

R&G RACING RETURNS POLICY (NON-FAULTY GOODS)

Returns must be pre-authorised (if not pre-authorised the return will be rejected). Goods may only be returned direct to us if they were purchased direct from us (customer must prove if necessary). Otherwise to be returned to original vendor. Goods must be in re-sellable condition, in the opinion of R&G Racing. All returns are subject to a 25% restocking and handling fee (25% of the gross value exc. P&P – at the prevailing price at time of purchase). The customer must pay any and all carriage charges. No returns of discontinued products, unless within 14 days of purchase. This policy does not affect your statutory rights and does not refer to faulty goods.