



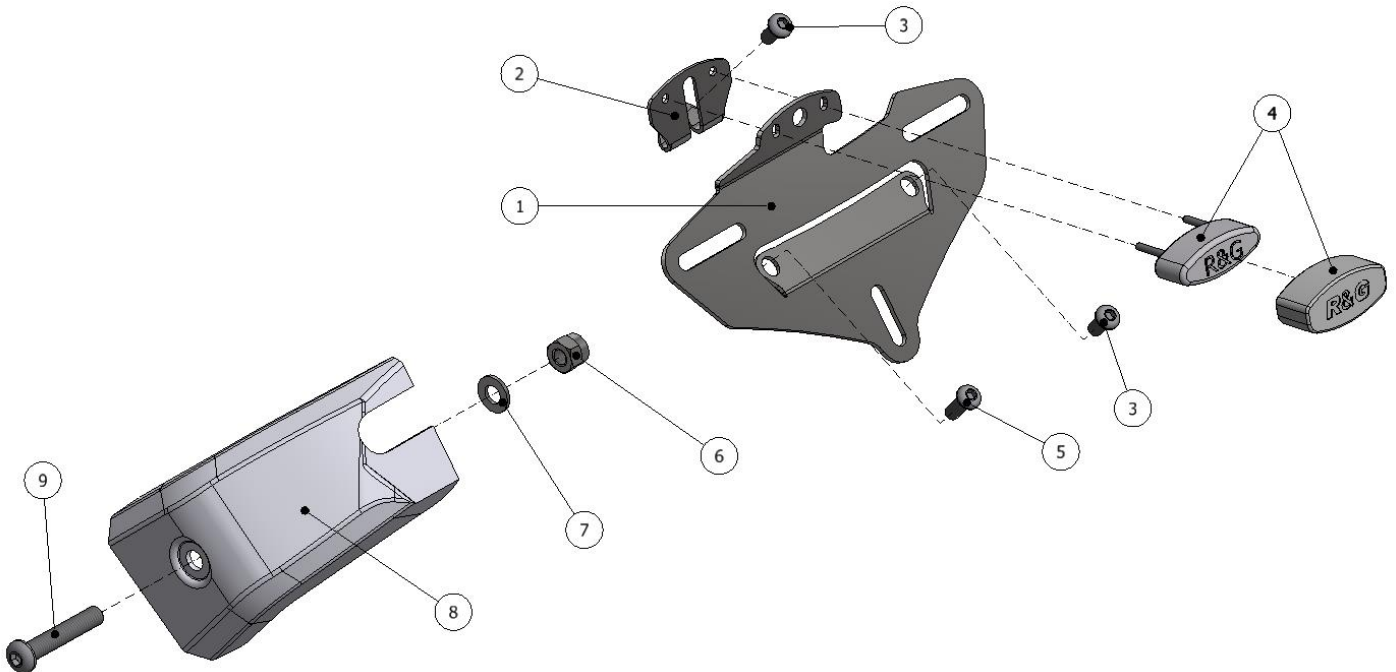
**FITTING INSTRUCTIONS FOR LP0215BK LICENCE PLATE BRACKET**  
**YAMAHA MT-09 '17-**

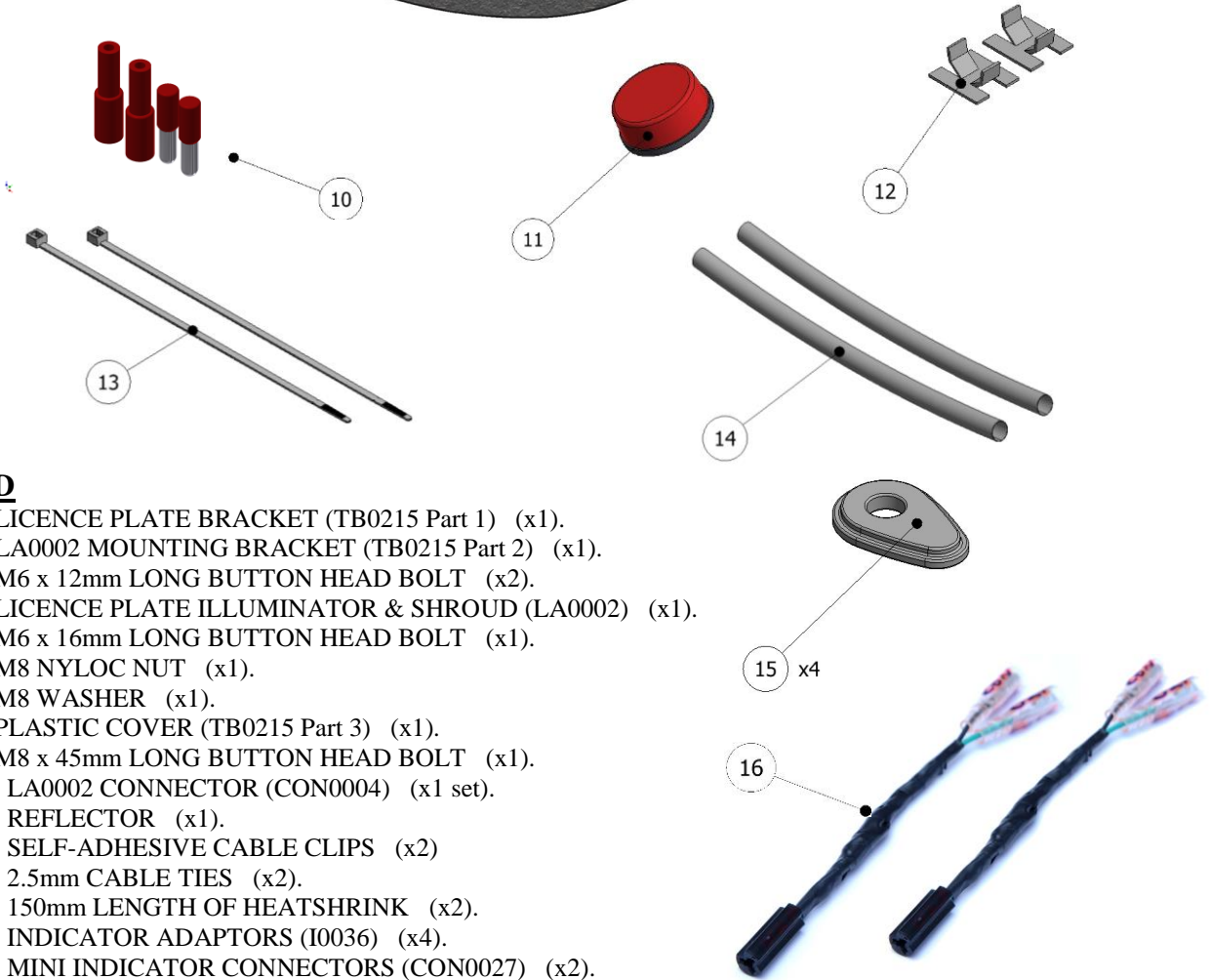


**THIS KIT CONTAINS THE ITEMS PICTURED AND LABELLED BELOW.**  
**DO NOT PROCEED UNTIL YOU ARE SURE ALL PARTS ARE PRESENT.**

Please note that the way the kit is packed does not necessarily represent the way of mounting to the bike.

THE PARTS SHOWN MAY BE REPRESENTATIVE ONLY (FOR CLARITY OF INSTRUCTIONS ONLY).





**LEGEND**

- ITEM 1 = LICENCE PLATE BRACKET (TB0215 Part 1) (x1).
- ITEM 2 = LA0002 MOUNTING BRACKET (TB0215 Part 2) (x1).
- ITEM 3 = M6 x 12mm LONG BUTTON HEAD BOLT (x2).
- ITEM 4 = LICENCE PLATE ILLUMINATOR & SHROUD (LA0002) (x1).
- ITEM 5 = M6 x 16mm LONG BUTTON HEAD BOLT (x1).
- ITEM 6 = M8 NYLOC NUT (x1).
- ITEM 7 = M8 WASHER (x1).
- ITEM 8 = PLASTIC COVER (TB0215 Part 3) (x1).
- ITEM 9 = M8 x 45mm LONG BUTTON HEAD BOLT (x1).
- ITEM 10 = LA0002 CONNECTOR (CON0004) (x1 set).
- ITEM 11 = REFLECTOR (x1).
- ITEM 12 = SELF-ADHESIVE CABLE CLIPS (x2)
- ITEM 13 = 2.5mm CABLE TIES (x2).
- ITEM 14 = 150mm LENGTH OF HEATSHRINK (x2).
- ITEM 15 = INDICATOR ADAPTORS (I0036) (x4).
- ITEM 16 = MINI INDICATOR CONNECTORS (CON0027) (x2).

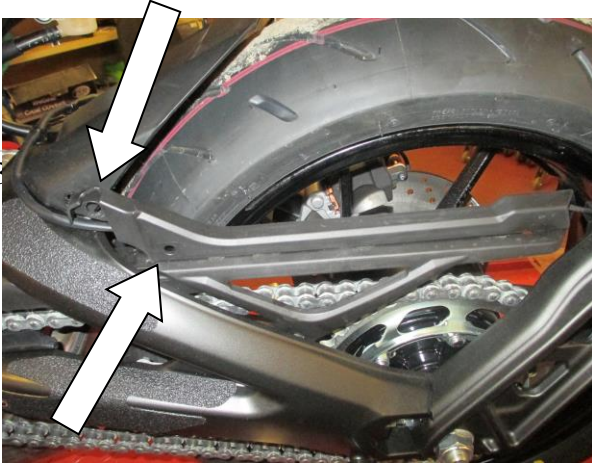
Please note that in cases where kits are packed with rubber washers holding the components onto the bolt – *the rubber washers should be thrown away!*

**TOOLS REQUIRED**

- Set of metric Allen keys to include 4 & 5mm A/F size.
  - 6, 10 & 12mm spanners or sockets.
    - Cable cutters.
  - Short length of double sided tape.
    - Phillips screwdriver.

**MAXIMUM TORQUE SETTINGS**

- M4 Bolt = 8 Nm
- M5 Bolt = 12 Nm
- M6 Bolt = 15 Nm
- M8 Bolt = 20 Nm



Picture 1



Picture 2



Picture 3



Picture 4





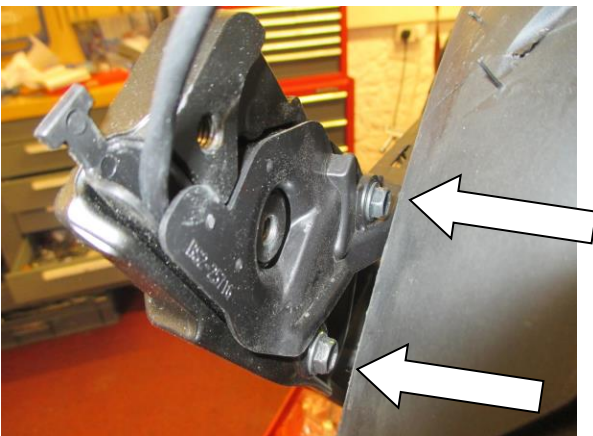
Picture 5



Picture 6



Picture 7



Picture 8



Picture 9

Picture 10



Picture 11

Picture 12



Picture 13



Picture 14



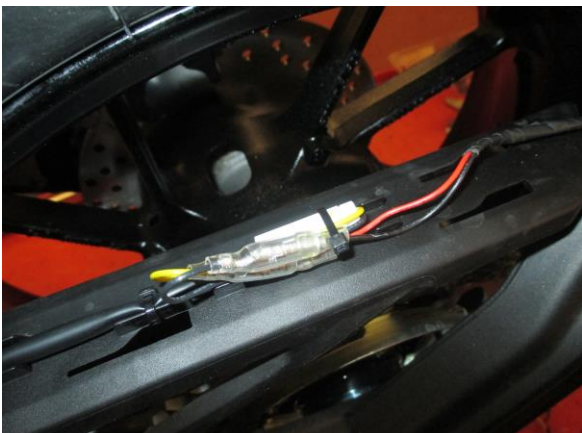
Picture 15



Picture 16



Picture 17



Picture 18



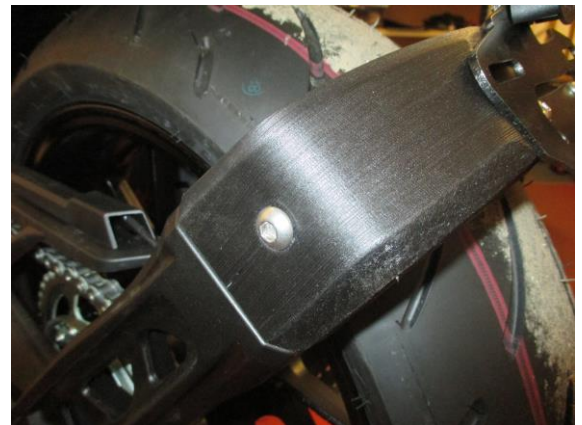
Picture 19



Picture 20



Picture 21



Picture 22



Picture 23



Picture 24



Picture 25



Picture 26



Picture 27



Picture 28



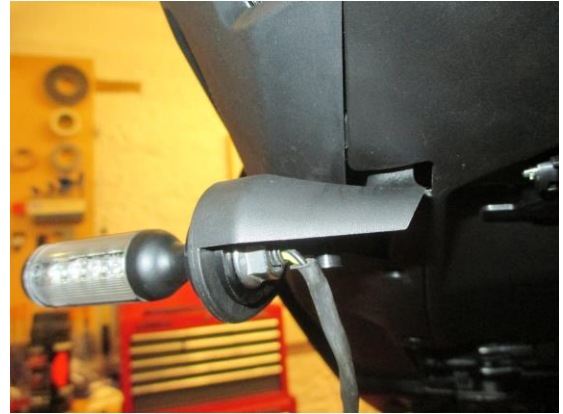
Picture 29



Picture 30



Picture 31



Picture 32



Picture 33

### **FITTING INSTRUCTIONS**

- To fit the R&G tail tidy, start by removing the cover on top of the chain guard to gain access to the licence plate illuminator connector. To do this, remove the push rivet and bolt at the front, as arrowed in picture 1, and then slide the cover forward to unclip it from the chain guard and expose the wiring connector, as shown in picture 2.
- Remove the four bolts that secure the OEM plastic cover in place, as arrowed in pictures 3 & 4 and rest the cover on top of the rear wheel, as the wiring will remain connected.
- Remove the three bolts that mount the sheet metal bracket in place, as shown in pictures 5 & 6.
- Remove the two bolts on the back of the wrap around metal bracket using a spanner, as shown in picture 7. *There is enough room to remove the bolt with the tyre/wheel in place.*
- Remove the cable tie securing the wiring, as shown in picture 8.
- Remove the two bolts that hold the plastic cover in place on the rear of the mounting arm and pull the cover clear to allow the licence plate illuminator wiring to be removed from the bike, as arrowed in picture 9. The OEM licence plate bracket can now be removed from the rear tyre.





- Take the OEM wrap around rear bracket, as shown in picture 10, and fit the LA0002 mounting bracket (item 2 – TB0215 Part 2) to the top threaded hole using one M6 x 12mm long button head bolts (item 3) as shown in pictures 11 & 12. *Loosely tighten it at this stage, so that it can be repositioned easily by hand.*
- Take the R&G licence plate bracket (item 1 – TB0215 Part 1) and offer it up to the assembly, fitting the remaining M6 x 12mm long button head bolt (item 3) through the right side hole and the M6 x 16mm long button head bolt (item 5) through the left side hole, as shown in picture 13. Loosely tighten these bolts and align with the holes in the previously fitted LA0002 bracket, as shown in picture 13. *The LA0002 bracket should be loose enough to adjust by hand to align the holes.*
- Remove the licence plate bracket to gain access to the bolt for the LA0002 bracket. Tighten this bolt to secure in place.
- Fit the R&G licence plate light (item 4 – LA0002) to the bracket, as shown in pictures 14, 15 & 16, by feeding the wires through the licence plate bracket and LA0002 bracket. Re-fit the two bolts to secure the licence plate bracket in place and tighten the nuts on the rear of the LA0002. Fit one length of heatshrink to the wires and use a small amount of super glue to secure the light shroud in place.
- Place this assembly carefully on top of the rear tyre whilst feeding the wiring down the mounting arm. Position the wiring behind the plastic cover on the inside of the mounting arm and re-fit the two OEM bolts, as shown in picture 17.
- In order to use the original plug socket to connect the licence plate illuminator to the wiring loom, we suggest to 'cut & shut' the OEM plug socket. To do this, cut the OEM plug socket off the OEM licence plate illuminator and cut the wires at minimum of 50mm away from the plug socket. Peel both wire ends and crimp female bullet connector (item 10) to each wire. Connect the female bullet connectors to those male connectors on the licence plate illuminator wiring. Test for the correct operation of the light at this stage. If illumination fails on any light, re-connect the bullet connectors the other way around. Use a cable tie to neatly bundle the wiring together and locate on top of the chainguard, as shown in picture 18.
- Offer the wrap around bracket into place on the mounting arm and re-fit the original lower bolt on the back, as shown in picture 20.
- Re-fit the plastic chainguard cover by locating onto the tabs and slide rearward, before re-fitting the original push rivet at the front, as shown in picture 21.
- It is advisable to fit the licence plate at this stage as the nuts on the rear are easily accessible at this stage.
- Re-fit the licence plate (it may require drilling). Depending on how long the bolt is, the bolt on the left side may need to be shortened. Use a spanner on the rear to tighten the nuts and bolts.
- Depending on local laws, attach enclosed reflector in an appropriate location.
- The plastic cover (item 8 – TB0215 Part 3) can now be fitted to the tail tidy assembly by sliding into place from the side, as shown in picture 22. *It is recommended to adhere a small piece of double sided sticky tape to the area around the slot on the plastic cover to stick to the back of the licence plate bracket when in place to prevent vibration between the two pieces.*
- Once in place, fit the M8 x 45mm long button head bolt (item 9) through the recessed hole in the plastic cover and then through the hole in the mounting arm, before fitting the M8 washer (item 7) and M8 nyloc nut (item 6) onto the exposed end of the thread and tighten securely.
- To fit mini indicators, remove the Phillips screw on the underside of the indicator housings underneath the tail unit, as shown in pictures 23 & 24.
- Remove the pillion seat to gain access to the indicator wiring connectors and disconnect both connectors that are located within the protective cover that is shown in pictures 25 & 26.
- Unhook the wiring, as arrowed in picture 27 and feed the wiring out of the tail unit.
- To remove the OEM indicator, pull the plastic insert out from the rubber housing that is shown in pictures 28 & 29 and remove the rubber indicator mount from the plastic housing, before pulling gently away from the bike, as shown in picture 30.



- Take two of the indicator adaptors (item 15 – I0036) and position over the mini indicator wiring, ensuring the raised bosses on the adaptors plates face each other.
  - Feed the wiring through the mounting hole in the plastic mount and position one adaptor on either side of the plastic mount, before fitting the nut and tightening to clamp the adaptors securely in place, as shown in picture 32.
  - Route the mini indicator wiring up through the existing hole into the tail unit and connect bullet connectors from one of the mini indicator connectors (item 16 – CON0027). Connect this connector to the OEM connector on the main loom, with the grey connector fitting to the left side indicator.
  - Repeat the same procedure to fit the remaining indicator.
  - Test for the correct operation of the indicators at this stage. If illumination fails on any light, re-connect the bullet connectors the other way around.
  - Re-fit the plastic covers the indicator housing along with the Phillips screw, as shown in picture 33.
  - Re-fit the pillion seat.
- 
- Ensure the tail tidy is securely mounted and all bolts are fully tightened.
  - Test the licence plate illuminator and all lights before riding.

ISSUE 1 20/07/2017 (HH)

**Digital copies of these instructions are available to download from [www.rg-racing.com](http://www.rg-racing.com)**

#### CONSUMER NOTICE

The catalogue description and any exhibition of samples are only broad indications of the Products and R&G may make design changes which do not diminish their performance or visual appeal and supplying them in such state shall conform to the order. The Buyer acknowledges no representation or warranty (other than as to title) has been given or will apply to the Products other than those in R&G's order or confirmation and the Buyer confirms it has chosen the Products as being of merchantable quality and suitable for its particular purposes. Where R&G fits the Products or undertakes other services it shall exercise reasonable skill and care and rectify any fault free of charge unless the workmanship has been disturbed. The Buyer is responsible for ensuring that the warranty on the motorcycle is not affected by the fitting of the Products. On return of any defective Products R&G shall at its option either supply a replacement or refund the purchase money but shall not be liable if the Products have been modified or used or maintained otherwise than in accordance with R&G's or manufacturer's instructions and good engineering practice or if the defect arises from accident or neglect. Other than identified above and subject to R&G not limiting its liability for causing death and personal injury, it shall not be liable for indirect or consequential loss and otherwise its liability shall be limited to the amounts paid by the Buyer for the Products or the fitting or service concerned. These terms do not affect the Buyer's statutory rights.

#### R&G RACING RETURNS POLICY (NON-FAULTY GOODS)

Returns must be pre-authorised (if not pre-authorised the return will be rejected). Goods may only be returned direct to us if they were purchased direct from us (customer must prove if necessary). Otherwise to be returned to original vendor. Goods must be in re-sellable condition, in the opinion of R&G Racing. All returns are subject to a 25% restocking and handling fee (25% of the gross value exc. P&P – at the prevailing price at time of purchase). The customer must pay any and all carriage charges. No returns of discontinued products, unless within 14 days of purchase. This policy does not affect your statutory rights and does not refer to faulty goods.