



**FITTING INSTRUCTIONS FOR CP0475 CRASH PROTECTORS
FOR YAMAHA XTZ 700 (TENERE) 2019-**



PICTURE A



PICTURE B

THIS KIT CONTAINS THE ITEMS PICTURED AND LABELLED OVER PAGE.

SOME PARTS MAY BE SHOWN FOR CLARITY OF INSTRUCTIONS ONLY.

DO NOT PROCEED UNTIL YOU ARE SURE ALL PARTS ARE PRESENT.

PLEASE READ ALL INSTRUCTIONS BEFORE PROCEEDING.

**IF IN ANY DOUBT WHEN FITTING OUR PRODUCTS, CONSULT ONE OF
OUR DEALERS OR HAVE FITTED BY A QUALIFIED TECHNICIAN.**

PLEASE NOTE THAT THE WAY THE KIT IS PACKED DOES NOT NECESSARILY REPRESENT THE
WAY OF MOUNTING TO THE BIKE.

IN THE EVENT OF RUBBER WASHERS BEING USED TO HOLD COMPONENTS ONTO BOLTS,
THESE RUBBER WASHERS CAN BE THROWN AWAY.

DIGITAL COPIES OF THESE INSTRUCTIONS ARE AVAILABLE FROM:

WWW.RG-RACING.COM

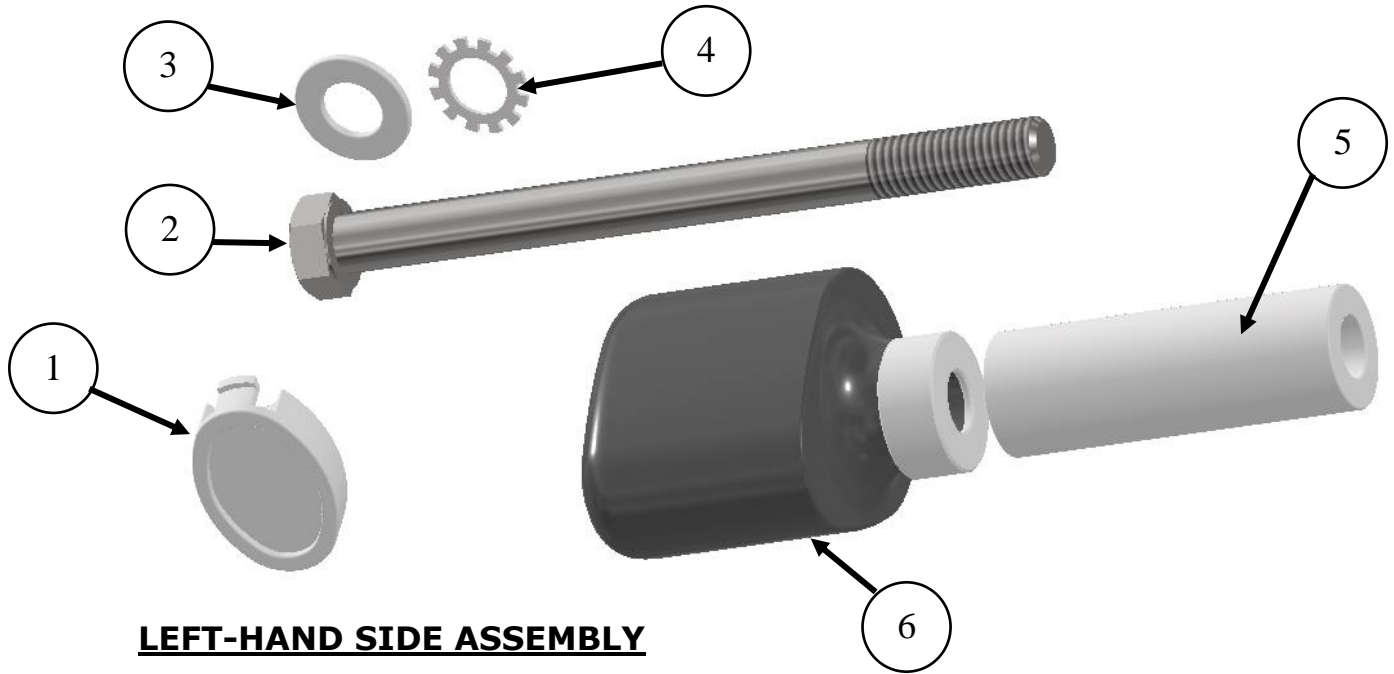


<u>TOOLS REQUIRED</u>	<u>GENERAL TORQUE SETTINGS</u>
<ul style="list-style-type: none"> • Socket set to include 12, 17 and 19mm A/F sockets or spanners. • Torque wrench (up-to 40Nm). 	<p>M4 BOLT = 8Nm</p> <p>M5 BOLT = 12Nm</p> <p>M6 BOLT = 15Nm</p> <p>M8 BOLT = 20Nm</p> <p>M10 BOLT = 40Nm</p> <p>M12 BOLT = 40Nm</p>

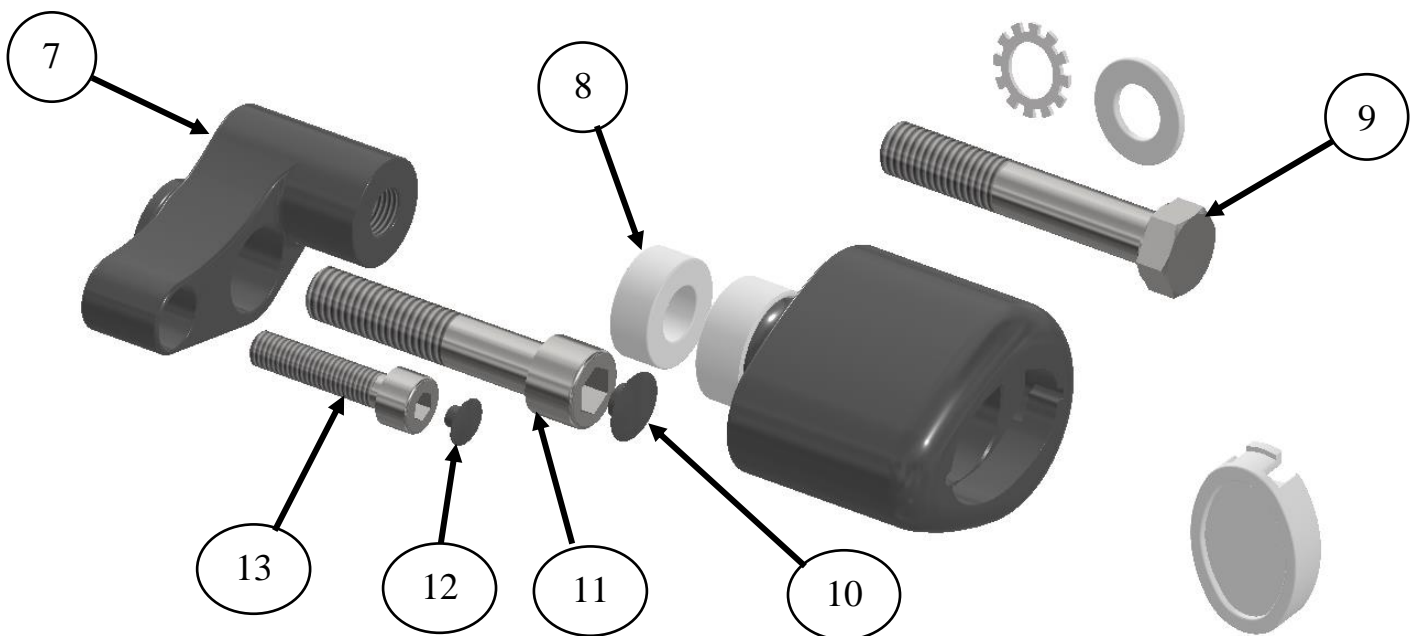
LEGEND

ITEM NO.	DESCRIPTION	QTY
ITEM 1	CRASH PROTECTOR CAPS (BC0002)	2
ITEM 2	M12 x 1.25 x 150mm LONG HEX HEAD BOLT	1
ITEM 3	M12 WASHERS	2
ITEM 4	SHAKE PROOF WASHERS (LW0001)	2
ITEM 5	SPACER 74mm LONG (S1217)	1
ITEM 6	CRASH PROTECTORS (B0431 c/w CS340 and S0255)	2
ITEM 7	RIGHT-HAND SJDE MOUNTING BLOCK (M0594)	1
ITEM 8	SPACER 10mm LONG (S1216)	1
ITEM 9	M12 x 1.25 x 70mm LONG HEX HEAD BOLT	1
ITEM 10	M10 FLAT CAPS (NC0010)	1
ITEM 11	M12 x 1.25 x 60mm LONG CAP HEAD BOLT	1
ITEM 12	M8 FLAT CAP (NC0009)	1
ITEM 13	M8 x 1.25 x 35mm LONG CAP HEAD BOLTS	1

R&G



LEFT-HAND SIDE ASSEMBLY



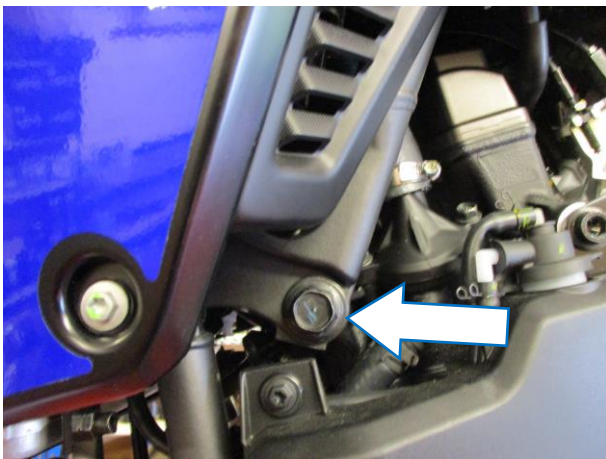
RIGHT-HAND SIDE ASSEMBLY



AERO STYLE CRASH PROTECTOR ORIENTATION



PICTURE C



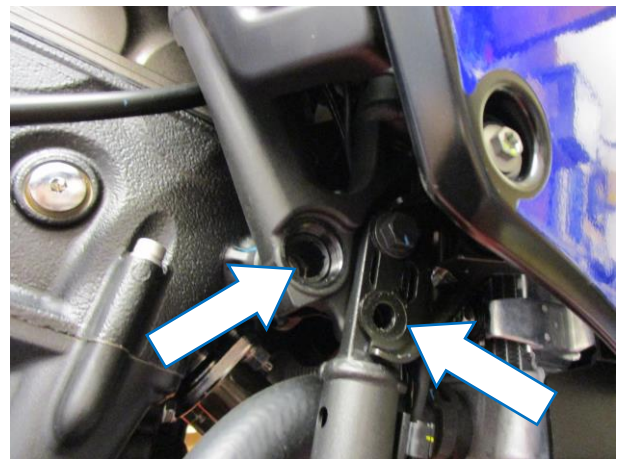
PICTURE 1



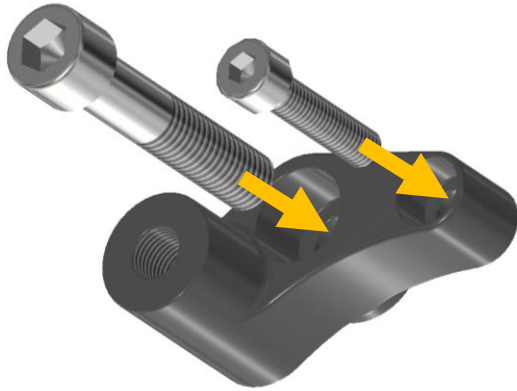
PICTURE 2



PICTURE 3



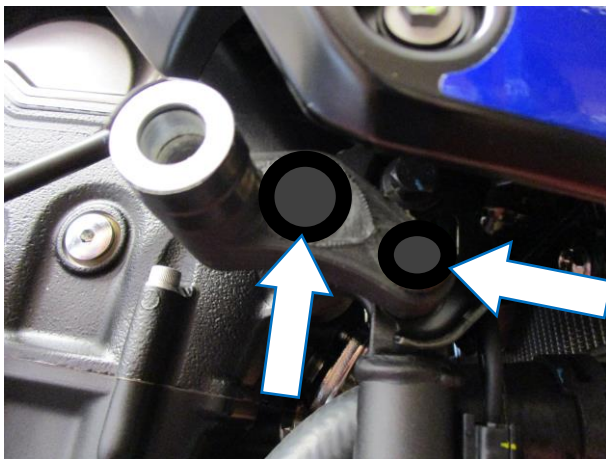
PICTURE 4



PICTURE 5



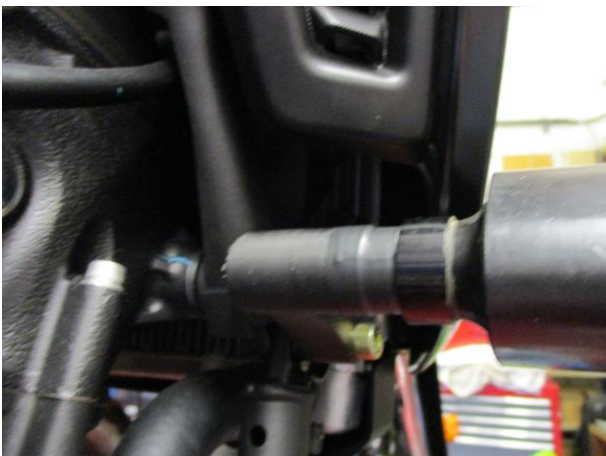
PICTURE 6



PICTURE 7



PICTURE 8



PICTURE 9



PICTURE 10



FITTING INSTRUCTIONS

- **It is advisable to support the engine to prevent any engine movement when the original engine bolts are loosened/removed (do not use excessive force as damage can occur).**

Near side (left side as you sit on the motorcycle)

- Remove the bolt arrowed in **picture 1**.
- Place one of the M12 washers (**item 3**) onto the longest M12 hex bolt (**item 2**) followed by one of the shake proof washers (**item 4**) as shown in **picture 2**.
- Place the bolt with washers into one of the crash protectors (**item 6**), then place the longest spacer over the exposed end of the bolt as shown in **picture 2**.
- Offer this assembly into position as shown in **pictures 'A'** on page 1 and **picture 3** (please ensure no parts come in contact with any fairing panels). Finally tighten the crash protector bolt until you feel some compression from inside the protector using 19mm socket and wrench. **PLEASE NOTE THE CRASH PROTECTOR MUST BE POSITIONED AS IN PICTURE 'C' ON PAGE 4 WITH THE BIGGER END TOWARD FRONT OF BIKE.** Turn a little more so that you feel the compression increase slightly. Then apply a quarter turn. **Tighten to 40Nm of torque (do not exceed this figure, as damage can occur to the motorcycle and the bolt).**

Off side (right side as you sit on the motorcycle)

- Remove the two bolts arrowed in **picture 4** (please note the larger bolt has a special washer/spacer which should be reused on assembly).
- Place the two cap head bolts (**items 11 and 13**) into the mounting block (**item 7**) and offer into position and tighten as shown in **picture 6**.
- Fit the bolt covers (**items 10 and 12**) into the bolts as shown in **picture 7**.
- Place the remaining M12 washer (**item 3**) onto the remaining shortest M12 hex bolt (**item 9**) followed by the remaining shake proof washer (**item 4**) as shown in **picture 8**.
- Place the bolt with washers into the remaining crash protector (**item 6**), then place the remaining shortest spacer over the exposed end of the bolt as shown in **picture 8**.
- Offer this assembly into position as shown in **pictures 'B'** on page 1 and **picture 9** (please ensure no parts come in contact with any fairing panels). Finally tighten the crash protector bolt until you feel some compression from inside the protector using 19mm socket and wrench. **PLEASE NOTE THE CRASH PROTECTOR MUST BE POSITIONED AS IN PICTURE 'C' ON PAGE 4 WITH THE BIGGER END TOWARD FRONT OF BIKE.** Turn a little more so that you feel the compression increase slightly. Then apply a quarter turn. **Tighten to 40Nm of torque (do not exceed this figure, as damage can occur to the motorcycle and the bolt).**
- Fit both crash protector caps (**item 1**) as shown in **picture 10**.
- Before riding please check both crash protectors are secure and will not rotate.
- Please check tightness of crash protectors regularly.

ISSUE 1 22/11/2019 (NSY)

R&G

Unit 1, Shelley's Lane, East Worldham, Alton, Hampshire, GU34 3AQ
Tel: +44 (0)1420 89007 Fax: +44 (0)1420 87301 www.rg-racing.com Email: info@rg-racing.com



CONSUMER NOTICE

The catalogue description and any exhibition of samples are only broad indications of the Products and R&G may make design changes which do not diminish their performance or visual appeal and supplying them in such state shall conform to the order. The Buyer acknowledges no representation or warranty (other than as to title) has been given or will apply to the Products other than those in R&G's order or confirmation and the Buyer confirms it has chosen the Products as being of merchantable quality and suitable for its particular purposes. Where R&G fits the Products or undertakes other services it shall exercise reasonable skill and care and rectify any fault free of charge unless the workmanship has been disturbed. The Buyer is responsible for ensuring that the warranty on the motorcycle is not affected by the fitting of the Products. On return of any defective Products R&G shall at its option either supply a replacement or refund the purchase money but shall not be liable if the Products have been modified or used or maintained otherwise than in accordance with R&G's or manufacturer's instructions and good engineering practice or if the defect arises from accident or neglect. Other than identified above and subject to R&G not limiting its liability for causing death and personal injury, it shall not be liable for indirect or consequential loss and otherwise its liability shall be limited to the amounts paid by the Buyer for the Products or the fitting or service concerned. These terms do not affect the Buyer's statutory rights.

R&G RETURNS POLICY (NON-FAULTY GOODS)

Returns must be pre-authorized (if not pre-authorized the return will be rejected). Goods may only be returned direct to us if they were purchased direct from us (customer must prove if necessary). Otherwise to be returned to original vendor. Goods must be in re-sellable condition, in the opinion of R&G. All returns are subject to a 25% restocking and handling fee (25% of the gross value exc. P&P – at the prevailing price at time of purchase). The customer must pay any and all carriage charges. No returns of discontinued products, unless within 14 days of purchase. This policy does not affect your statutory rights and does not refer to faulty goods.

R&G

Unit 1, Shelley's Lane, East Worldham, Alton, Hampshire, GU34 3AQ
Tel: +44 (0)1420 89007 Fax: +44 (0)1420 87301 www.rg-racing.com Email: info@rg-racing.com