



**FITTING INSTRUCTIONS FOR CP0401BL AERO CRASH PROTECTORS**  
**DUCATI X-DIAVEL AND S 2016- MODELS**

Page | 1



PICTURE 'A'



PICTURE 'B'



PICTURE 'C'

**THIS KIT CONTAINS THE ITEMS PICTURED AND LABELLED BELOW.**  
**DO NOT PROCEED UNTIL YOU ARE SURE ALL PARTS ARE PRESENT.**

Please note that the way the kit is packed does not necessarily represent the way of mounting to the bike

Please note that in cases where kits are packed with rubber washers holding the components onto the bolt – *the rubber washers should be thrown away!*

THE PARTS SHOWN MAY BE REPRESENTATIVE ONLY (FOR CLARITY OF INSTRUCTIONS ONLY)

**Digital copies of these instructions are available to download from [www.rg-racing.com](http://www.rg-racing.com)**

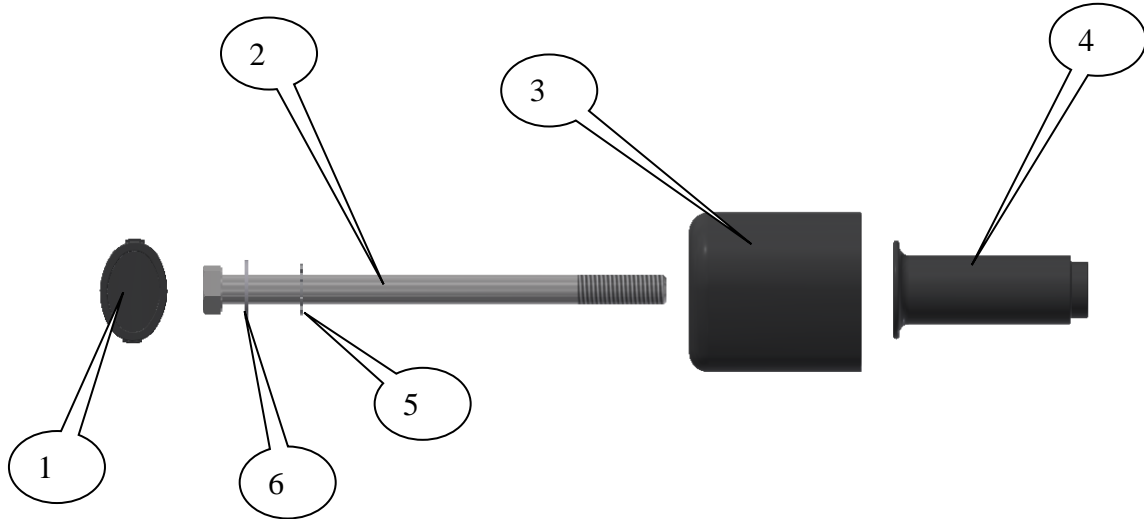
**GENERAL TORQUE SETTINGS**

M4 BOLT = 8Nm  
M5 BOLT = 12Nm  
M6 BOLT = 15Nm  
M8 BOLT = 20Nm  
M10 BOLT = 40Nm

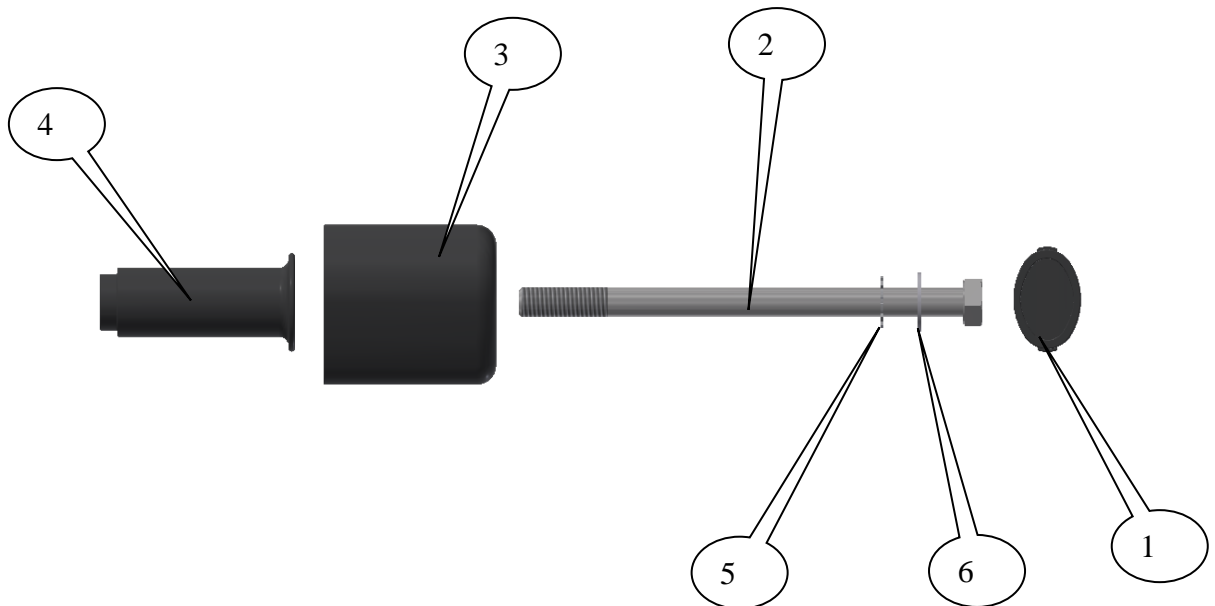
**R&G Racing**

Unit 1 Shelleys Lane, East Worldham, Alton, Hants GU34 3AQ

Tel: +44 (0)1420 89007 Fax: +44 (0)1420 87301 [www.rg-racing.com](http://www.rg-racing.com) Email: [info@rg-racing.com](mailto:info@rg-racing.com)



LEFT HAND SIDE ASSEMBLY



RIGHT HAND SIDE ASSEMBLY

**R&G Racing**



### TOOLS REQUIRED

- Socket set to include 14 and 19mm A/F socket and wrench.
- Torque wrench (up to 40Nm).

### LEGEND

Page | 3

- ITEM 1 = CRASH PROTECTOR CAPS, R&LHS (BC0002) (x2).  
 ITEM 2 = CRASH PROTECTOR BOLT L&RHS, M12x180mm LONG HEX HEAD (x2).  
 ITEM 3 = CRASH PROTECTORS, R&LHS (B0061 with CS340, 12mm) (x2).  
 ITEM 4 = CRASH PROTECTOR SPACER, L&RHS (S0950=79mm LONG) (x2).  
 ITEM 5 = LOCKING WASHERS, R&LHS (LW0001) (x2).  
 ITEM 6 = M12 PLAIN WASHERS, R&LHS (x2).

### FITTING INSTRUCTIONS

#### *Near side (left side as you sit on bike)*

- Remove the bolt in position arrowed in picture 'A'.
- Place one of the plain washers (item 6) onto one of the hex headed bolts (item 2) as shown in the left hand side assembly.
- Place one of the locking washers (item 5) over the bolt and against the washer just fitted as shown in the left hand side assembly.
- Place the bolt with both washers through one of the crash protectors (item 3) as shown in the left hand side assembly.
- Place one of the spacers (item 4=78mm long) over the exposed end of the bolt and against the crash protector as shown in the left hand side assembly.
- Offer this assembly into position as shown in picture 'A' on page 1 (please ensure no parts come in contact with any fairing panels). Finally tighten the crash protector bolts until you feel some compression from inside the protector using 19mm socket and wrench. **PLEASE NOTE THE CRASH PROTECTOR MUST BE POSITIONED AS IN PICTURE 'C' WITH BIGGER END TOWARD FRONT OF BIKE.** Turn a little more so that you feel the compression increase slightly. Then apply a quarter turn. Do not over tighten as damage can occur to the bike. Do not exceed 40 N/m of torque.
- If not already fitted, fit bubble sticker into recess of crash protector cap (item 1).
- Fit crash protector cap (item 1) into the crash protector.

#### *Off side (right side as you sit on bike)*

- Remove the bolt in position arrowed in picture 'B'.
- Place one of the plain washers (item 6) onto one of the hex headed bolts (item 2) as shown in the right hand side assembly.
- Place one of the locking washers (item 5) over the bolt and against the washer just fitted as shown in the right hand side assembly.
- Place the bolt with both washers through one of the crash protectors (item 3) as shown in the right hand side assembly.
- Place one of the spacers (item 4=78mm long) over the exposed end of the bolt and against the crash protector as shown in the right hand side assembly.
- Offer this assembly into position as shown in picture 'B' on page 1 (please ensure no parts come in contact with any fairing panels). Finally tighten the crash protector bolts until you feel some

### **R&G Racing**

Unit 1 Shelleys Lane, East Worldham, Alton, Hants GU34 3AQ

Tel: +44 (0)1420 89007 Fax: +44 (0)1420 87301 [www.rg-racing.com](http://www.rg-racing.com) Email: [info@rg-racing.com](mailto:info@rg-racing.com)