



**FITTING INSTRUCTIONS FOR CP0428BL/WH AERO
NO-DRILL CRASH PROTECTORS
DUCATI SUPERSPORT 2017**

Page | 1



PICTURE 'A'



PICTURE 'B'



REAR OF BIKE

FRONT OF BIKE

PICTURE 'C'

**THIS KIT CONTAINS THE ITEMS PICTURED AND LABELLED BELOW.
DO NOT PROCEED UNTIL YOU ARE SURE ALL PARTS ARE PRESENT.**

Please note that the way the kit is packed does not necessarily represent the way of mounting to the bike

Please note that in cases where kits are packed with rubber washers holding the components onto the bolt – *the rubber washers should be thrown away!*

THE PARTS SHOWN MAY BE REPRESENTATIVE ONLY (FOR CLARITY OF INSTRUCTIONS ONLY)

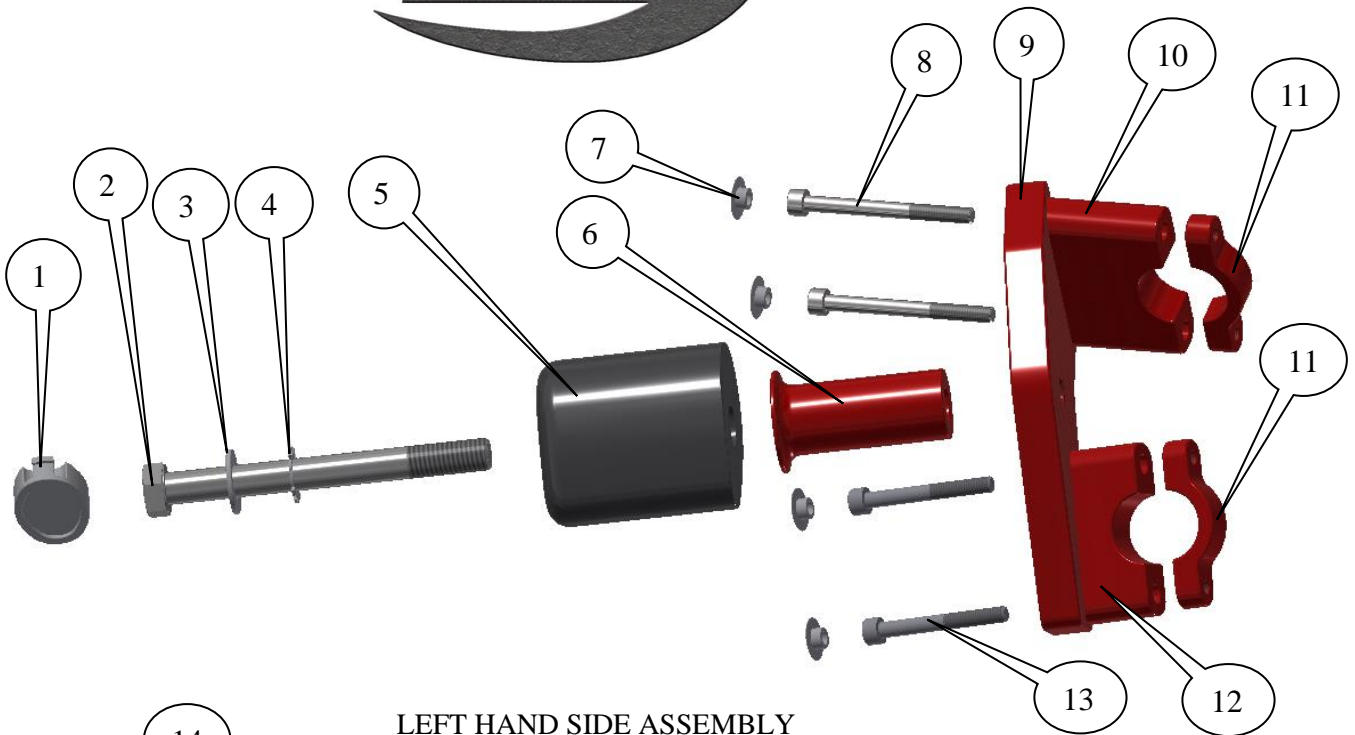
Digital copies of these instructions are available to download from www.rg-racing.com

GENERAL TORQUE SETTINGS

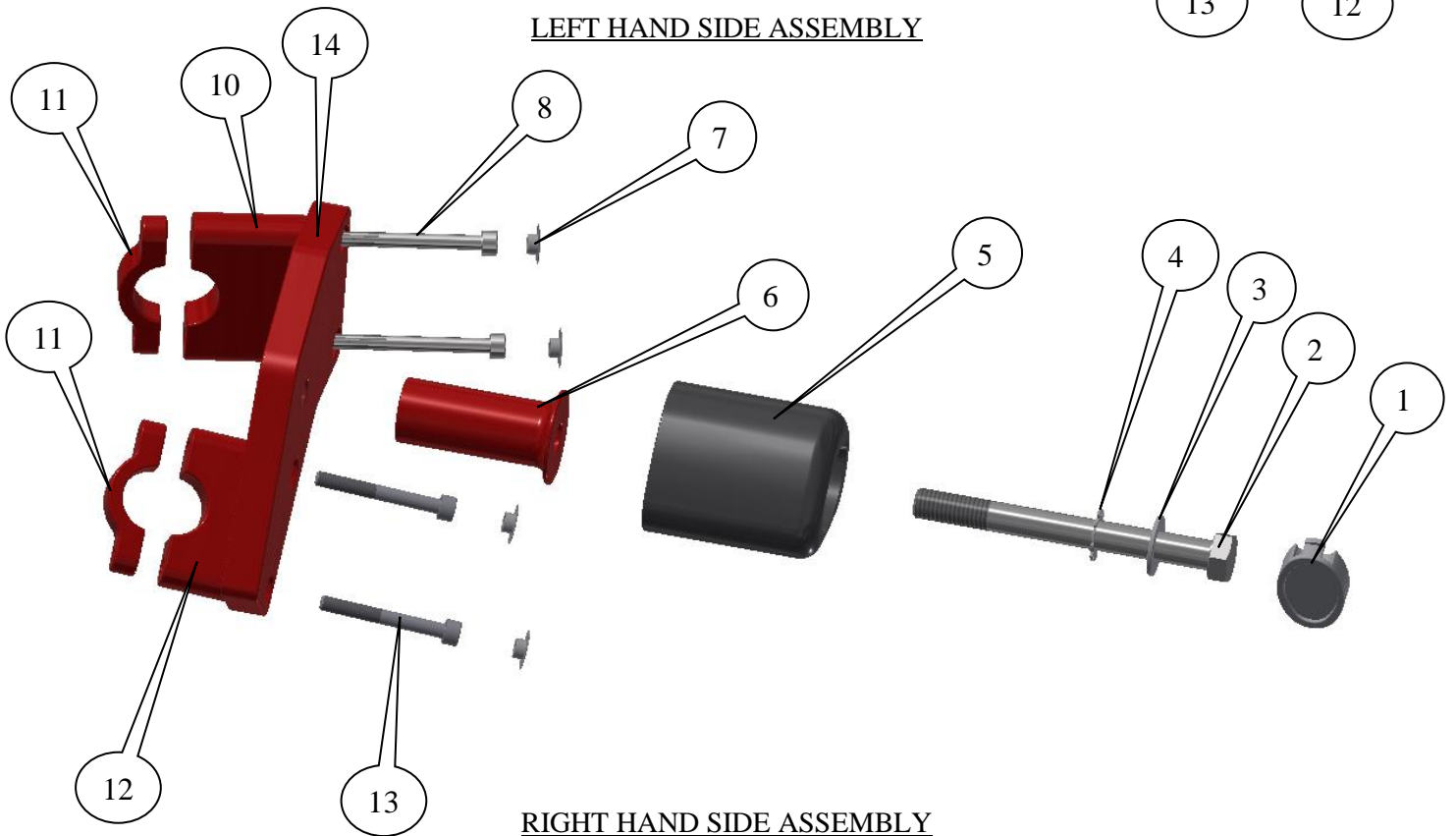
M4 BOLT = 8Nm
M5 BOLT = 12Nm
M6 BOLT = 15Nm
M8 BOLT = 20Nm
M10 BOLT = 40Nm

R&G Racing

Unit 1 Shelleys Lane, East Worldham, Alton, Hants GU34 3AQ
Tel: +44 (0)1420 89007 Fax: +44 (0)1420 87301 www.rg-racing.com Email: info@rg-racing.com



LEFT HAND SIDE ASSEMBLY



RIGHT HAND SIDE ASSEMBLY

R&G Racing

Unit 1 Shelleys Lane, East Worldham, Alton, Hants GU34 3AQ

Tel: +44 (0)1420 89007 Fax: +44 (0)1420 87301 www.rg-racing.com Email: info@rg-racing.com



TOOLS REQUIRED

- Socket set to include 19mm A/F socket and wrench.
 - Hex drive bits or set of Allen keys.
 - Torque wrench (up to 40Nm).

LEGEND

Page | 3

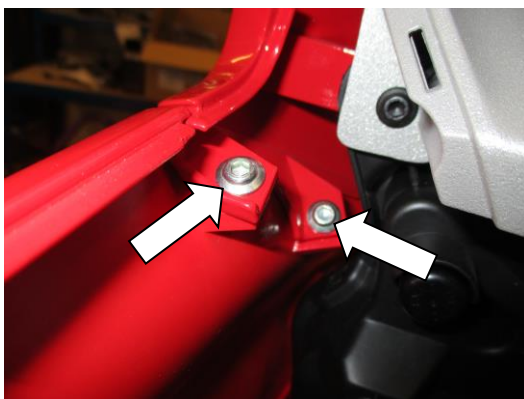
- ITEM 1 = CRASH PROTECTOR CAPS- L&RHS (BC0002) (x2).
 ITEM 2 = CRASH PROTECTOR BOLTS- L&RHS, M12x1.25x120mm LONG HEX HEAD (x2).
 ITEM 3 = M12 PLAIN WASHERS- L&RHS (x2).
 ITEM 4 = LOCKING WASHERS- L&RHS (LW0001) (x2).
 ITEM 5 = CRASH PROTECTORS- L&RHS (B0061 with CS340, 12mm) (x2).
 ITEM 6 = SPACER, L&RHS (S1034=63mm LONG) (x2).
 ITEM 7 = M6 FLAT CAPS- L&RHS (x8).
 ITEM 8 = FRONT CLAMPING BOLTS- L&RHS, M6x65mm LONG CAP HEAD (x4).
 ITEM 9 = LEFT HAND SIDE MAIN MOUNTING PLATE (M0511) (x1).
 ITEM 10 = FRONT MOUNTING BLOCK-L&RHS (M0513) (x2).
 ITEM 11 = FRAME CLAMPS (F0046) (x4).
 ITEM 12 = REAR MOUNTING BLOCK-L&RHS (M0514) (x2).
 ITEM 13 = REAR CLAMPING BOLTS- L&RHS, M6x65mm LONG CAP HEAD (x4).
 ITEM 14 = RIGHT HAND SIDE MAIN MOUNTING PLATE (M0512) (x1).



PICTURE 1



PICTURE 2



PICTURE 3

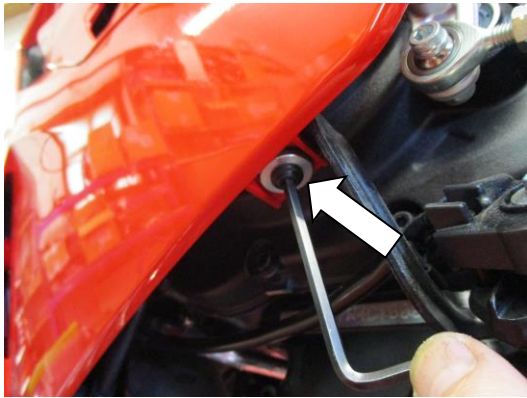


PICTURE 4

R&G Racing

Unit 1 Shelleys Lane, East Worldham, Alton, Hants GU34 3AQ

Tel: +44 (0)1420 89007 Fax: +44 (0)1420 87301 www.rg-racing.com Email: info@rg-racing.com



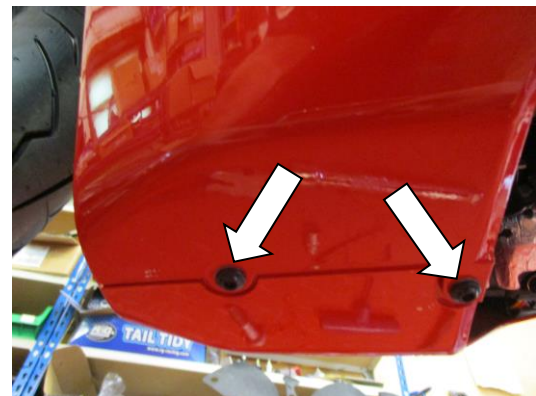
PICTURE 5



PICTURE 6



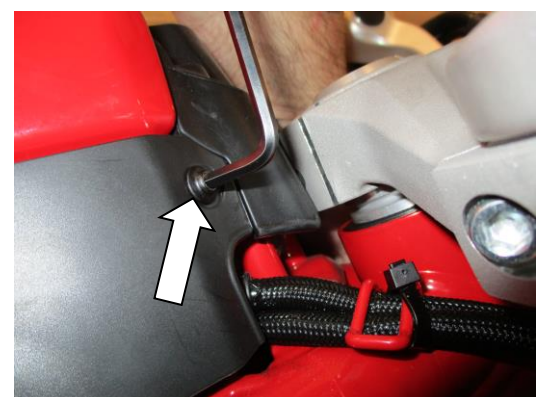
PICTURE 7



PICTURE 8



PICTURE 9

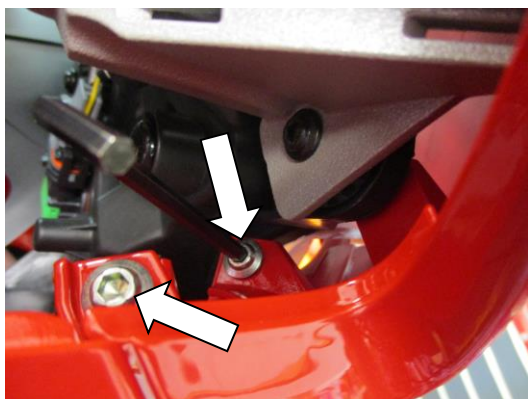


PICTURE 10

R&G Racing

Unit 1 Shelleys Lane, East Worldham, Alton, Hants GU34 3AQ

Tel: +44 (0)1420 89007 Fax: +44 (0)1420 87301 www.rg-racing.com Email: info@rg-racing.com



PICTURE 11



PICTURE 12



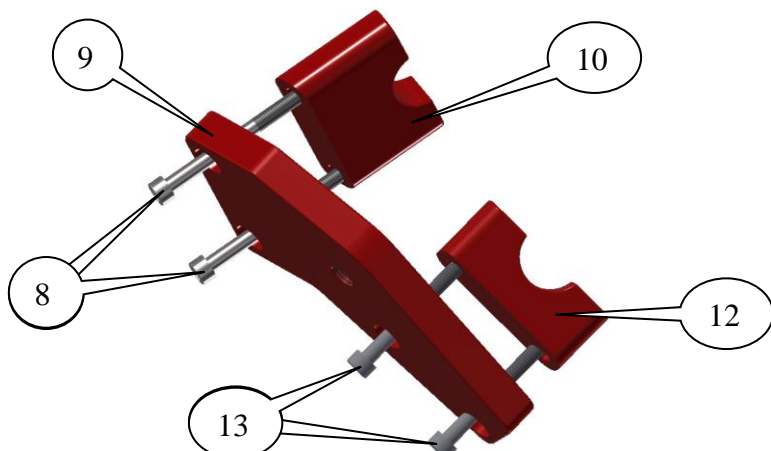
PICTURE 13



PICTURE 14



PICTURE 15

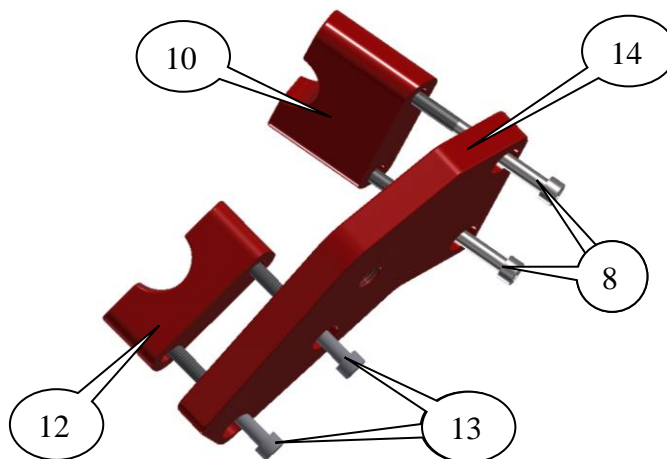


PICTURE 16

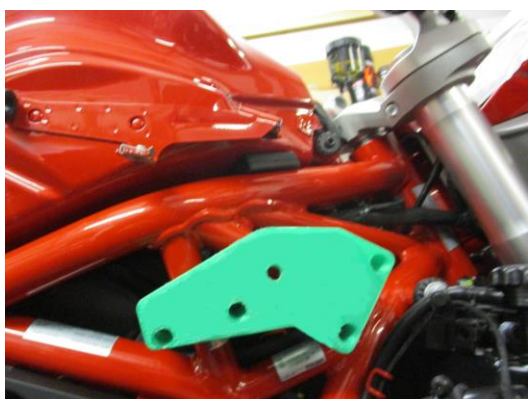
R&G Racing



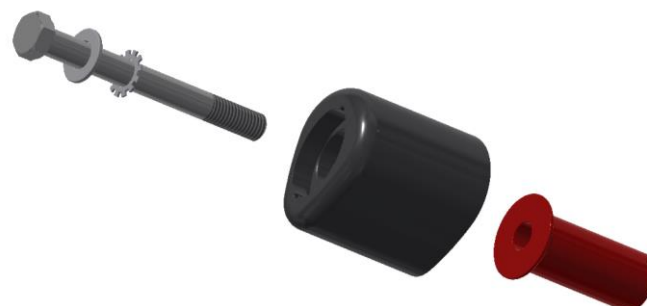
PICTURE 17



PICTURE 18



PICTURE 19



PICTURE 20



PICTURE 21

R&G Racing



FITTING INSTRUCTIONS

Near side (left side as you sit on bike)

- Remove the two bolts in position arrowed in pictures 1 and 2.
- Remove the black plastic infill panel to allow access to the side fairing bolts.
- Remove the fairing bolts arrowed in pictures 3, 4, 5, 6, 7 and 8.
- Carefully pull the fairing outwards to disengage the side location spigots and then carefully push forward to disengage front location spigots and remove the fairing.

Off side (right side as you sit on bike)

- Remove the two bolts in position arrowed in pictures 9 and 10.
- Remove the black plastic infill panel to allow access to the side fairing bolts.
- Remove the fairing bolts arrowed in pictures 11, 12, 13, 14 and 15.
- Carefully pull the fairing outwards to disengage the side location spigots and then carefully push forward to disengage front location spigots and remove the fairing.

Near side (left side as you sit on bike)

- Place two of the longer M6 cap head bolts (item 8) into the two holes in the left-hand side main mounting plate (item 9) so the head of the bolts fit into the counter-bore as shown in picture 16.
- Place one of the front mounting blocks (item 10—it is one of the longer blocks) over the exposed bolts so the angled face sits against the main mounting plate as shown in picture 16.
- Place two of the shorter M6 cap head bolts (item 13) into the two holes in the left-hand side main mounting plate (item 9) so the head of the bolts fit into the counter-bore as shown in picture 16.
- Place one of the rear mounting blocks (item 12—it is one of the shorter blocks) over the exposed bolts so the angled face sits against the main mounting plate as shown in picture 16.
- Offer into position as shown in picture 17 (it is worthwhile using a length of electrical tape to prevent marking of the frame) and secure using two of the frame clamps (items 11) the assembly will find its natural position, then tighten all four bolts.

Off side (right side as you sit on bike)

- Place two of the longer M6 cap head bolts (item 8) into the two holes in the right-hand side main mounting plate (item 14) so the head of the bolts fit into the counter-bore as shown in picture 18.
- Place one of the front mounting blocks (item 10—it is one of the longer blocks) over the exposed bolts so the angled face sits against the main mounting plate as shown in picture 18.
- Place two of the shorter M6 cap head bolts (item 13) into the two holes in the right-hand side main mounting plate (item 14) so the head of the bolts fit into the counter-bore as shown in picture 18.
- Place one of the rear mounting blocks (item 12—it is one of the shorter blocks) over the exposed bolts so the angled face sits against the main mounting plate as shown in picture 18.
- Offer into position as shown in picture 19 (it is worthwhile using a length of electrical tape to prevent marking of the frame) and secure using two of the frame clamps (items 11) the assembly will find its natural position, then tighten all four bolts.
- Place the M6 flat caps (item 7) into the heads of all the M6 bolt heads.
- Refit both fairings and infill panels on both sides of the motorcycle.
- Place one of the M12 washers (item 3) onto the one of the M12 bolts (item 2) as shown in picture 21.
- Place one of the locking washers (item 4) onto the bolt so it sits against the washer just fitted as shown in picture 21.
- Place the bolt with both washers into the crash protector (item 5) as shown in picture 21.

R&G Racing

Unit 1 Shelleys Lane, East Worldham, Alton, Hants GU34 3AQ

Tel: +44 (0)1420 89007 Fax: +44 (0)1420 87301 www.rg-racing.com Email: info@rg-racing.com



- Offer this assembly into the threaded hole in the mounting plate as shown in picture A on page 1. Please ensure no parts come in contact with any fairing panels. Finally tighten the crash protector bolts until you feel some compression from inside the protector using 19mm socket and wrench. **PLEASE NOTE THE CRASH PROTECTOR MUST BE POSITIONED AS IN PICTURE 'C' WITH BIGGER END TOWARD FRONT OF BIKE.** Turn a little more so that you feel the compression increase slightly. Tighten to 40Nm of torque (do not exceed this figure, as damage can occur to the motorcycle and the bolt).
- If not already fitted, fit bubble sticker into recess of crash protector cap (item 1).
- Fit crash protector cap (item 1) into the crash protector.

Near side (left side as you sit on bike)

- Place one of the M12 washers (item 3) onto the one of the M12 bolts (item 2) as shown in picture 20.
- Place one of the locking washers (item 4) onto the bolt so it sits against the washer just fitted as shown in picture 20.
- Place the bolt with both washers into the crash protector (item 5) as shown in picture 20.
- Offer this assembly into the threaded hole in the mounting plate as shown in picture B on page 1. Please ensure no parts come in contact with any fairing panels. Finally tighten the crash protector bolts until you feel some compression from inside the protector using 19mm socket and wrench. **PLEASE NOTE THE CRASH PROTECTOR MUST BE POSITIONED AS IN PICTURE 'C' WITH BIGGER END TOWARD FRONT OF BIKE.** Turn a little more so that you feel the compression increase slightly. Tighten to 40Nm of torque (do not exceed this figure, as damage can occur to the motorcycle and the bolt).
- If not already fitted, fit bubble sticker into recess of crash protector cap (item 1).
- Fit crash protector cap (item 1) into the crash protector.

Issue 1 20/07/2017 (NSY)

CONSUMER NOTICE

The catalogue description and any exhibition of samples are only broad indications of the Products and R&G may make design changes which do not diminish their performance or visual appeal and supplying them in such state shall conform to the order. The Buyer acknowledges no representation or warranty (other than as to title) has been given or will apply to the Products other than those in R&G's order or confirmation and the Buyer confirms it has chosen the Products as being of merchantable quality and suitable for its particular purposes. Where R&G fits the Products or undertakes other services it shall exercise reasonable skill and care and rectify any fault free of charge unless the workmanship has been disturbed. The Buyer is responsible for ensuring that the warranty on the motorcycle is not affected by the fitting of the Products. On return of any defective Products R&G shall at its option either supply a replacement or refund the purchase money but shall not be liable if the Products have been modified or used or maintained otherwise than in accordance with R&G's or manufacturer's instructions and good engineering practice or if the defect arises from accident or neglect. Other than identified above and subject to R&G not limiting its liability for causing death and personal injury, it shall not be liable for indirect or consequential loss and otherwise its liability shall be limited to the amounts paid by the Buyer for the Products or the fitting or service concerned. These terms do not affect the Buyer's statutory rights.

R&G RACING RETURNS POLICY (NON-FAULTY GOODS)

Returns must be pre-authorised (if not pre-authorised the return will be rejected). Goods may only be returned direct to us if they were purchased direct from us (customer must prove if necessary). Otherwise to be returned to original vendor. Goods must be in re-sellable condition, in the opinion of R&G Racing. All returns are subject to a 25% restocking and handling fee (25% of the gross value exc. P&P – at the prevailing price at time of purchase). The customer must pay any and all carriage charges. No returns of discontinued products, unless within 14 days of purchase. This policy does not affect your statutory rights and does not refer to faulty goods.

R&G Racing

Unit 1 Shelleys Lane, East Worldham, Alton, Hants GU34 3AQ

Tel: +44 (0)1420 89007 Fax: +44 (0)1420 87301 www.rg-racing.com Email: info@rg-racing.com