



FITTING INSTRUCTIONS FOR CP0520 AERO CRASH PROTECTORS
YAMAHA MT-125 2020-



THIS KIT CONTAINS THE ITEMS PICTURED AND LABELLED OVER PAGE.

SOME PARTS MAY BE SHOWN FOR CLARITY OF INSTRUCTIONS ONLY.

DO NOT PROCEED UNTIL YOU ARE SURE ALL PARTS ARE PRESENT.

PLEASE READ ALL INSTRUCTIONS BEFORE PROCEEDING.

**IF IN ANY DOUBT WHEN FITTING OUR PRODUCTS, CONSULT ONE OF OUR DEALERS
OR HAVE FITTED BY A QUALIFIED TECHNICIAN.**

PLEASE NOTE THAT THE WAY THE KIT IS PACKED DOES NOT NECESSARILY REPRESENT THE WAY OF
MOUNTING TO THE BIKE.

IN THE EVENT OF RUBBER WASHERS BEING USED TO HOLD COMPONENTS ONTO BOLTS,
THESE RUBBER WASHERS CAN BE THROWN AWAY.

DIGITAL COPIES OF THESE INSTRUCTIONS ARE AVAILABLE FROM:

WWW.RG-RACING.COM



| <u>TOOLS REQUIRED</u> | <u>GENERAL TORQUE SETTINGS</u> |
|---|--|
| <ul style="list-style-type: none"> • SOCKET & WRENCH SET INCLUDING 15mm and 17mm SOCKETS. • TORQUE WRENCH (UP TO 50Nm) • SUITABLE SUPPORT JACK | <p>M4 BOLT = 8Nm M5 BOLT = 12Nm M6 BOLT = 15Nm M8 BOLT = 20Nm M10 BOLT = 40Nm M12 BOLT = 40Nm</p> |

LEGEND

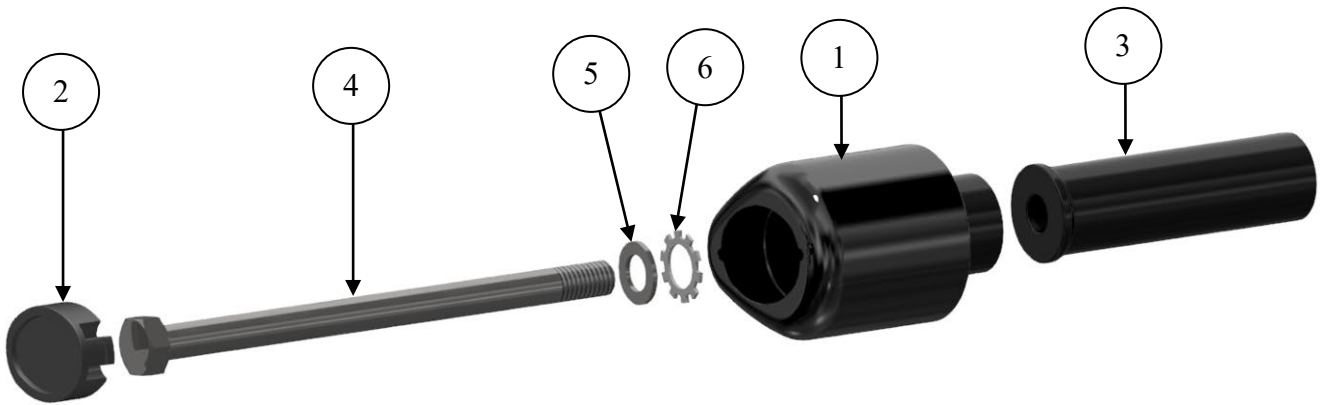
| ITEM NO. | DESCRIPTION | QTY |
|----------|---|-----|
| ITEM 1 | B0431 AERO BOBBINS | 2 |
| ITEM 2 | BC0002 BOBBIN CAPS (BOTH SIDES) | 2 |
| ITEM 3 | S0689 TWO Ø SPACER 85mm LONG (BLACK) | 2 |
| ITEM 4 | M10x1.25x150 HEX HEAD BOLT | 2 |
| ITEM 5 | M10x19mm O/D PENNY WASHER (BOTH SIDES) | 2 |
| ITEM 6 | LW0001 LOCKING WASHERS (BOTH SIDES) | 2 |

AERO-STYLE CRASH PROTECTOR ORIENTATION





LHS & RHS EXPLODED ASSEMBLY VIEW



FITTING PICTURES



Picture 1



Picture 2



Picture 3



FITTING INSTRUCTIONS

Before removing engine bolts, ensure the bike is upright and supported by a suitable engine stand or jack placed under the sump of the motorbike to support the partial weight of the engine, this will prevent the engine from moving during fitting. DO NOT REMOVE MORE THAN 1 ENGINE BOLT AT ANY TIME.

PREPARATION:

- Place a suitable jack beneath the engine in a central position using a piece of wood or plastic between the jack and engine.
- Apply very light pressure to the underside of the engine to support the engine during the fitment process.

Assemble the crash protectors before removing the engine bolts to limit the amount of time the engine is partially un-supported.

- Place one of the penny washers (**ITEM 5**) over the bolt (**ITEM 4**) followed by the shake proof washer (**ITEM 6**).
- Insert the 150mm bolt (**ITEM 4**) with washers into the aero bobbin (**ITEM 1**) followed by the 85mm long spacer (**ITEM 3**) as shown in **Picture 2**.

INSTALLATION:

- Remove the OEM engine mounting bolt shown in **Picture 1**.
- Install the bobbin and bolt assembly pre-prepared into the engine mount. Screw the M10x150mm bolt into the thread which will hold the assembly in position.
NOTE: To avoid cross threading apply forward pressure to the bolt and rotate counter-clockwise until a click is heard then begin to turn clockwise & tighten.
- Using a torque wrench with 17mm socket fitted, tighten the bolt to 45 Nm. You may need to hold the bobbin in position to prevent it turning while tightening the bolt.
- Repeat the same process for the other side, ensuring that the bobbin faces the correct way.
- Once completed, double check torque settings & the position/orientation of the bobbins then push the bobbin caps (**ITEM2**) into place then remove the jack.

ISSUE 1 - 29/07/2021 (WW)

CONSUMER NOTICE

The catalogue description and any exhibition of samples are only broad indications of the Products and R&G may make design changes which do not diminish their performance or visual appeal and supplying them in such state shall conform to the order. The Buyer acknowledges no representation or warranty (other than as to title) has been given or will apply to the Products other than those in R&G's order or confirmation and the Buyer confirms it has chosen the Products as being of merchantable quality and suitable for its particular purposes. Where R&G fits the Products or undertakes other services it shall exercise reasonable skill and care and rectify any fault free of charge unless the workmanship has been disturbed. The Buyer is responsible for ensuring that the warranty on the motorcycle is not affected by the fitting of the Products. On return of any defective Products R&G shall at its option either supply a replacement or refund the purchase money but shall not be liable if the Products have been modified or used or maintained otherwise than in accordance with R&G's or manufacturer's instructions and good engineering practice or if the defect arises from accident or neglect. Other than identified above and subject to R&G not limiting its liability for causing death and personal injury, it shall not be liable for indirect or consequential loss and otherwise its liability shall be limited to the amounts paid by the Buyer for the Products or the fitting or service concerned. These terms do not affect the Buyer's statutory rights.

R&G Racing

Unit 1, Shelley's Lane, East Worldham, Alton, Hampshire, GU34 3AQ

Tel: +44 (0)1420 89007 Fax: +44 (0)1420 87301 www.rg-racing.com Email: info@rg-racing.com