



FITTING INSTRUCTIONS FOR CP0537 AERO CRASH PROTECTORS
BMW S1000R (ALL VARIANTS) 2021-



THIS KIT CONTAINS THE ITEMS PICTURED AND LABELLED OVER PAGE.

SOME PARTS MAY BE SHOWN FOR CLARITY OF INSTRUCTIONS ONLY.

DO NOT PROCEED UNTIL YOU ARE SURE ALL PARTS ARE PRESENT.

PLEASE READ ALL INSTRUCTIONS BEFORE PROCEEDING.

**IF IN ANY DOUBT WHEN FITTING OUR PRODUCTS, CONSULT ONE OF OUR DEALERS
OR HAVE FITTED BY A QUALIFIED TECHNICIAN.**

PLEASE NOTE THAT THE WAY THE KIT IS PACKED DOES NOT NECESSARILY REPRESENT THE WAY OF
MOUNTING TO THE BIKE.

IN THE EVENT OF RUBBER WASHERS BEING USED TO HOLD COMPONENTS ONTO BOLTS,
THESE RUBBER WASHERS CAN BE THROWN AWAY.

DIGITAL COPIES OF THESE INSTRUCTIONS ARE AVAILABLE FROM:

WWW.RG-RACING.COM

R&G Racing
Unit 1, Shelley's Lane, East Worldham, Alton, Hampshire, GU34 3AQ
Tel: +44 (0)1420 89007 Fax: +44 (0)1420 87301 www.rg-racing.com Email: info@rg-racing.com



<u>TOOLS REQUIRED</u>	<u>GENERAL TORQUE SETTINGS</u>
<ul style="list-style-type: none"> • 17mm & 19mm A/F SOCKET & WRENCH • 8mm Allen key • T45 & T20 Torx drive • TORQUE WRENCH (UP TO 40Nm) • Suitable bike engine support jack 	M4 BOLT = 8Nm M5 BOLT = 12Nm M6 BOLT = 15Nm M8 BOLT = 20Nm M10 BOLT = 40Nm M12 BOLT = 40Nm

LEGEND

ITEM NO.	DESCRIPTION	QTY
ITEM 1	M0688 - MOUNTING BRACKET LHS	1
ITEM 2	M0689 - MOUNTING BRACKET RHS	1
ITEM 3	S1396 - BRACKET MOUNTING SPACERS LHS	2
ITEM 4	S1397 - BRACKET MOUNTING SPACERS RHS TOP	1
ITEM 5	S1398 - BRACKET MOUNTING SPACERS RHS BOT	1
ITEM 6	B0063 - CRASH PROTECTORS (BOTH SIDES)	2
ITEM 7	BC0002 - CRASH PROTECTOR CAPS	2
ITEM 8	M10x1.50x75mm LONG 8.8 GRADE HEX HEAD BOLTS	2
ITEM 9	BOLT0008 - M10x1.50x65mm LONG COUNTERSUNK BOLTS	2
ITEM 10	NC0001 - M10 RUBBER NUT CAPS (BOTH SIDES)	2
ITEM 11	NC0009 - M8 PLASTIC FLAT CAPS (BOTH SIDES)	2
ITEM 12	M10x1.25x40mm LONG HEX HEAD BOLTS	2
ITEM 13	M10 WASHERS	2
ITEM 14	LW0001 - M12 LOCKING WASHERS	2

R&G Racing

Unit 1, Shelley's Lane, East Worldham, Alton, Hampshire, GU34 3AQ

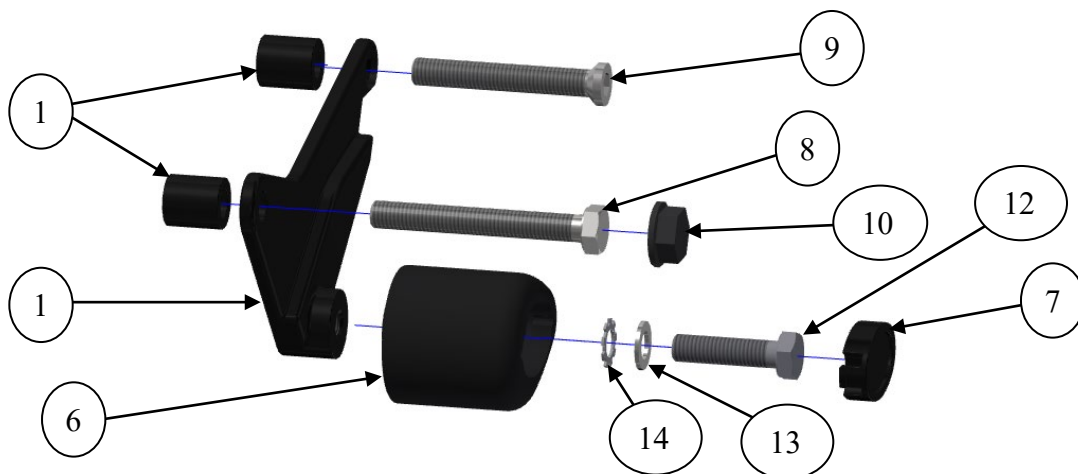
Tel: +44 (0)1420 89007 Fax: +44 (0)1420 87301 www.rg-racing.com Email: info@rg-racing.com



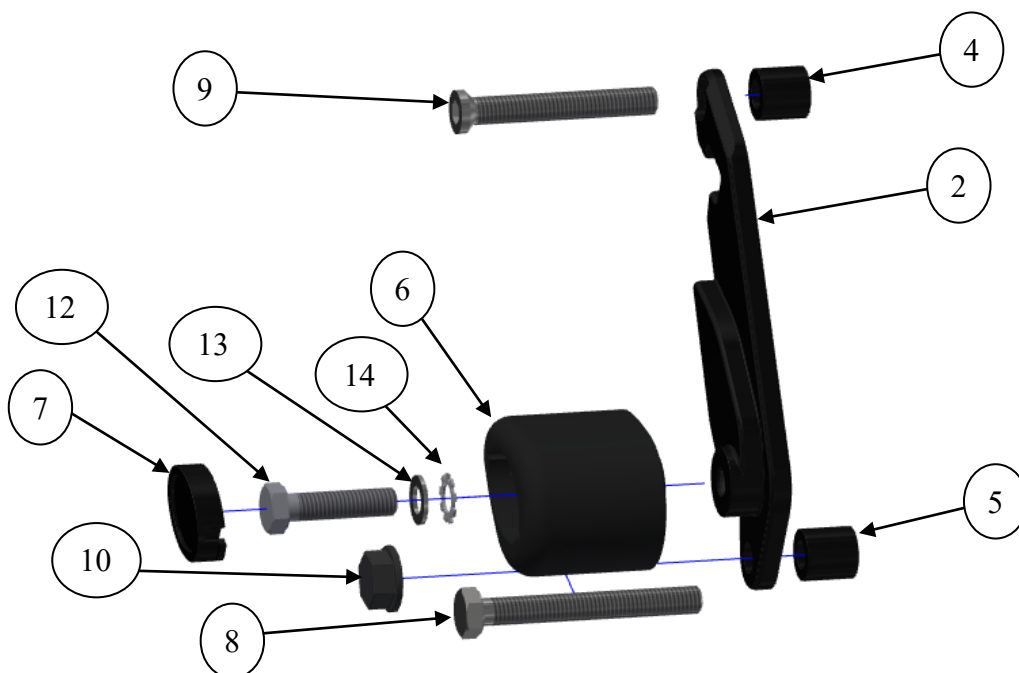
AERO-STYLE CRASH PROTECTOR ORIENTATION



LHS EXPLODED ASSEMBLY VIEW

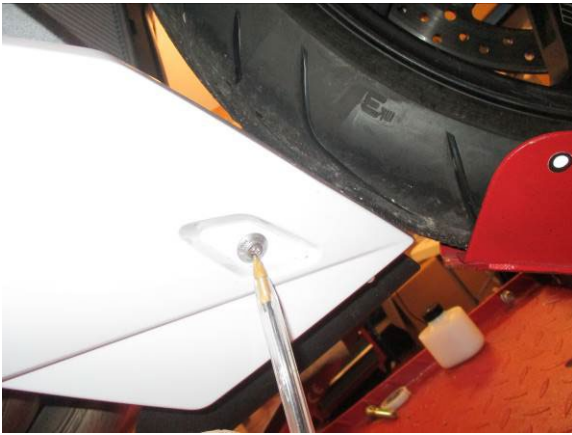


RHS EXPLODED ASSEMBLY VIEW





FITTING PICTURES



Picture 1



Picture 2



Picture 3



Picture 4



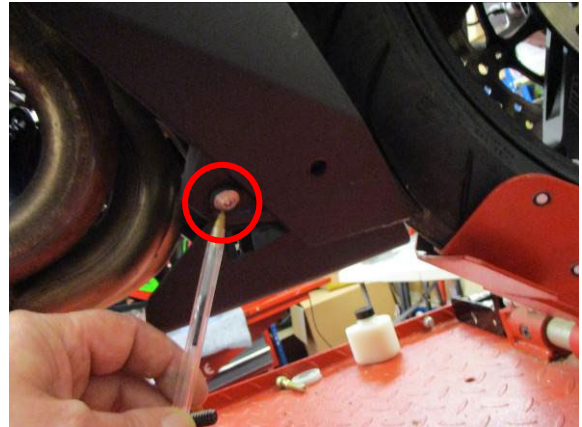
Picture 5



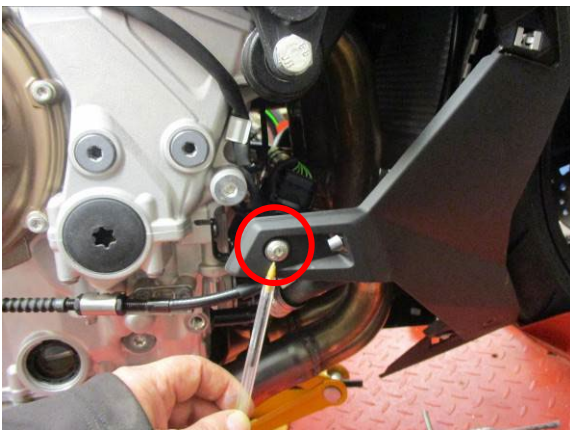
Picture 6



Picture 7



Picture 8



Picture 9



Picture 10



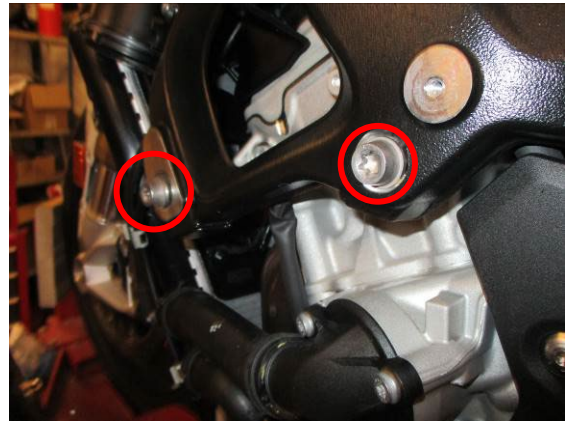
Picture 11



Picture 12



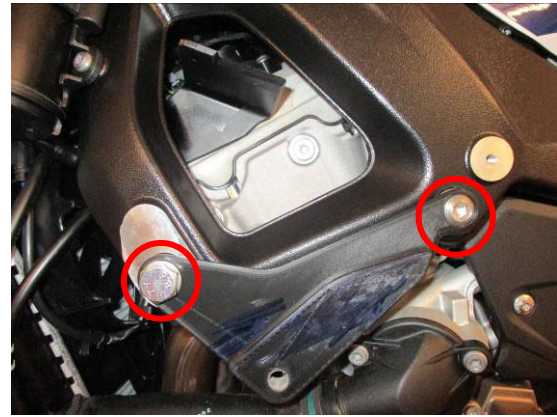
Picture 13



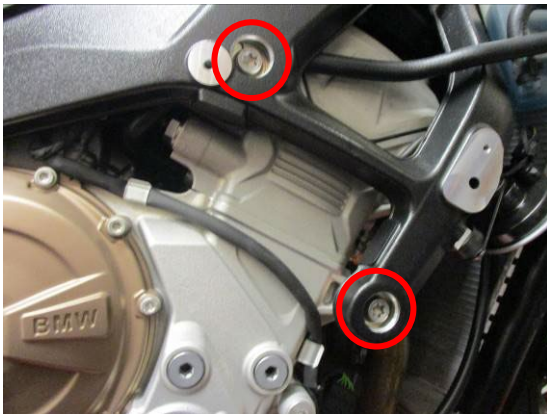
Picture 14



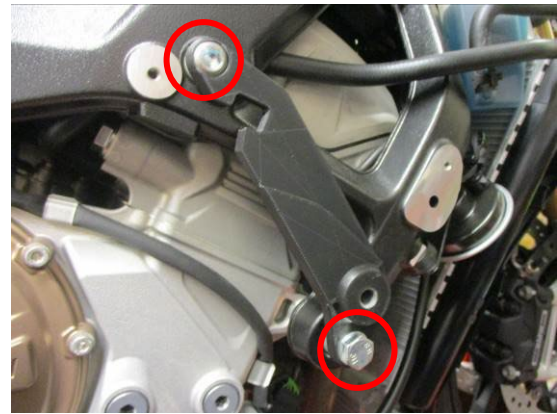
Picture 15



Picture 16



Picture 17



Picture 18



Picture 19



Picture 20



Picture 21



Picture 22



Picture 23



Picture 24



FITTING INSTRUCTIONS

BEFORE REMOVING ENGINE BOLTS, ENSURE THE BIKE IS UPRIGHT AND SUPPORTED BY A SUITABLE ENGINE STAND OR JACK PLACED UNDER THE SUMP OF THE MOTORBIKE TO SUPPORT THE WEIGHT OF THE ENGINE, THIS WILL PREVENT THE ENGINE FROM MOVING DURING FITTING.

FAIRING REMOVAL

- Begin by removing the lower cover piece. This can be removed by removing the screw shown in **Picture 1**. The white cover then needs to be popped outwards and pulled backwards as shown in **Picture 2** to be removed. Repeat this process for both sides.
- Next the upper fairing cover pieces need to be removed. Start by removing the 3 screws shown in **Pictures 3 & 4** on both sides.
- Now the cover piece can be gently pulled away. Manipulate the cover so that the clips pop out one by one until the cover is free and can be removed on both sides as shown in **Pictures 5, 6 & 7**.
- The main fairing pieces now need to be removed to expose the mounting bolts for the crash protector kit.
- Remove the screw shown in **Pictures 8, 9 & 10** in both sides.
- Next, the plastic protrusion in the fairing, near to the BMW badge can be pulled free from the rubber grommet on both sides as shown in **Picture 11**.
- Finally, the last clip can be pulled free from the lower portion of the fairing as shown in **Picture 12**. The remaining fairing pieces can now be removed on both sides.

LHS BRACKET INSTALLATION

- Before removing the engine mounting bolts, ensure that the engine is supported with a jack or engine stand as shown in **Picture 13**.
- Remove the 2 bolts shown in **Picture 14**.
- Insert the 2 spacers (ITEM 3) into the holes left by the 2 bolts which have just been removed.
- Offer the LHS mounting bracket (ITEM 1) into position and insert the 2 bolts (ITEMS 8 & 9) into position as shown in **Picture 15**.
- Tighten the 2 bolts to the specified torque setting (as shown in **Picture 16**) as specified in the BMW service manual.

RHS BRACKET INSTALLATION

- Before removing the engine mounting bolts, ensure that the engine is supported with a jack or engine stand as shown in **Picture 13**.
- Remove the 2 bolts shown in **Picture 17**.
- Insert the 2 spacers (ITEMS 4 & 5) into the holes left by the 2 bolts which have just been removed.
- Offer the RHS mounting bracket (ITEM 2) into position and insert the 2 bolts (ITEMS 8 & 9) into position as shown in **Picture 18**.
- Tighten the 2 bolts to the specified torque setting as specified in the BMW service manual.

R&G Racing

Unit 1, Shelley's Lane, East Worldham, Alton, Hampshire, GU34 3AQ

Tel: +44 (0)1420 89007 Fax: +44 (0)1420 87301 www.rg-racing.com Email: info@rg-racing.com



BOBBIN INSTALLATION

- Before attaching the crash bobbins, re-assemble the fairings to the bike by reversing the steps described in the FAIRING REMOVAL section. This will leave the mounting bosses for the bobbins exposed as shown in **Pictures 19 & 20**.
- (Note that a black bobbin has been used for the LHS and a white bobbin for the RHS for illustration purposes.)
- Insert the locking washers (ITEM 14), plain washers (ITEM 13), then bobbin bolts (ITEM 12) into the bobbins and tighten to the bosses as shown in **Pictures 21 & 22** to 40Nm.
- Finally clip on the bobbin caps to hide the bolts as shown in **Pictures 23 & 24**.

ISSUE 1 – 01/02/2022 (WW)

CONSUMER NOTICE

The catalogue description and any exhibition of samples are only broad indications of the Products and R&G may make design changes which do not diminish their performance or visual appeal and supplying them in such state shall conform to the order. The Buyer acknowledges no representation or warranty (other than as to title) has been given or will apply to the Products other than those in R&G's order or confirmation and the Buyer confirms it has chosen the Products as being of merchantable quality and suitable for its particular purposes. Where R&G fits the Products or undertakes other services it shall exercise reasonable skill and care and rectify any fault free of charge unless the workmanship has been disturbed. The Buyer is responsible for ensuring that the warranty on the motorcycle is not affected by the fitting of the Products. On return of any defective Products R&G shall at its option either supply a replacement or refund the purchase money but shall not be liable if the Products have been modified or used or maintained otherwise than in accordance with R&G's or manufacturer's instructions and good engineering practice or if the defect arises from accident or neglect. Other than identified above and subject to R&G not limiting its liability for causing death and personal injury, it shall not be liable for indirect or consequential loss and otherwise its liability shall be limited to the amounts paid by the Buyer for the Products or the fitting or service concerned. These terms do not affect the Buyer's statutory rights.

R&G RACING RETURNS POLICY (NON-FAULTY GOODS)

Returns must be pre-authorized (if not pre-authorized the return will be rejected). Goods may only be returned direct to us if they were purchased direct from us (customer must prove if necessary). Otherwise, to be returned to original vendor. Goods must be in re-sellable condition, in the opinion of R&G Racing. All returns are subject to a 25% restocking and handling fee (25% of the gross value exc. P&P – at the prevailing price at time of purchase). The customer must pay any and all carriage charges. No returns of discontinued products, unless within 14 days of purchase. This policy does not affect your statutory rights and does not refer to faulty goods.

R&G Racing

Unit 1, Shelley's Lane, East Worldham, Alton, Hampshire, GU34 3AQ

Tel: +44 (0)1420 89007 Fax: +44 (0)1420 87301 www.rg-racing.com Email: info@rg-racing.com