



FITTING INSTRUCTIONS FOR CP0543BL AERO CRASH PROTECTORS
TRIUMPH TIGER 660 SPORT 2022-



THIS KIT CONTAINS THE ITEMS PICTURED AND LABELLED OVER PAGE.

SOME PARTS MAY BE SHOWN FOR CLARITY OF INSTRUCTIONS ONLY.

DO NOT PROCEED UNTIL YOU ARE SURE ALL PARTS ARE PRESENT.

PLEASE READ ALL INSTRUCTIONS BEFORE PROCEEDING.

**IF IN ANY DOUBT WHEN FITTING OUR PRODUCTS, CONSULT ONE OF OUR DEALERS OR
HAVE FITTED BY A QUALIFIED TECHNICIAN.**

PLEASE NOTE THAT THE WAY THE KIT IS PACKED DOES NOT NECESSARILY REPRESENT THE WAY OF
MOUNTING TO THE BIKE.

IN THE EVENT OF RUBBER WASHERS BEING USED TO HOLD COMPONENTS ONTO BOLTS,
THESE RUBBER WASHERS CAN BE THROWN AWAY.

**DIGITAL COPIES OF THESE INSTRUCTIONS ARE AVAILABLE TO DOWNLOAD FROM
WWW.RG-RACING.COM**

R&G

Unit 1, Shelley's Lane, East Worldham, Alton, Hampshire, GU34 3AQ
Tel: +44 (0)1420 89007 Fax: +44 (0)1420 87301 www.rg-racing.com Email: info@rg-racing.com



<u>TOOLS REQUIRED</u>	<u>GENERAL TORQUE SETTINGS</u>
<ul style="list-style-type: none"> • SOCKET SET W/ DEEP 17MM SOCKET & 17MM SOCKET. • TORQUE WRENCH CAPABLE OF 40Nm. • SUITABLE JACK WITH SOFT SUPPORT AREA (TO SUPPORT ENGINE WHILE MOUNTING BOLTS REMOVED). 	M4 BOLT = 8Nm M5 BOLT = 12Nm M6 BOLT = 15Nm M8 BOLT = 20Nm M10 BOLT = 40Nm M12 BOLT = 40Nm

LEGEND

ITEM NO.	DESCRIPTION	QTY
ITEM 1	M0334 - LHS MOUNTING BRACKET	1
ITEM 2	M0335 - RHS MOUNTING BRACKET	1
ITEM 3	B0061 - BOBBIN	2
ITEM 4	BC0002 - BOBBIN CAP	2
ITEM 5	S1340 - LHS BOBBIN SPACER	1
ITEM 6	S1417 - RHS BOBBIN SPACER	1
ITEM 7	S1344 - LHS FRONT SPACER	1
ITEM 8	S0727 - LHS REAR SPACER	1
ITEM 9	S0424 - RHS FRONT SPACER	1
ITEM 10	S0642 - RHS REAR SPACER	1
ITEM 11	120mm M10 HEX HEAD BOLT (LHS FRONT)	1
ITEM 12	55mm M10 HEX HEAD BOLT (LHS REAR)	1
ITEM 13	90mm M10 HEX HEAD BOLT (LHS BOBBIN BOLT)	1
ITEM 14	105mm M10 HEX HEAD BOLT (RHS FRONT)	1
ITEM 15	85mm M10 HEX HEAD BOLT (RHS REAR)	1
ITEM 16	80mm M10 HEX HEAD BOLT (RHS BOBBIN BOLT)	1
ITEM 17	M10 20mm OD WASHER	6
ITEM 18	M12 SHAKE PROOF WASHER	2
ITEM 19	M10 NYLOC NUT	3
ITEM 20	NC0001 - M10 BOLT CAP	4

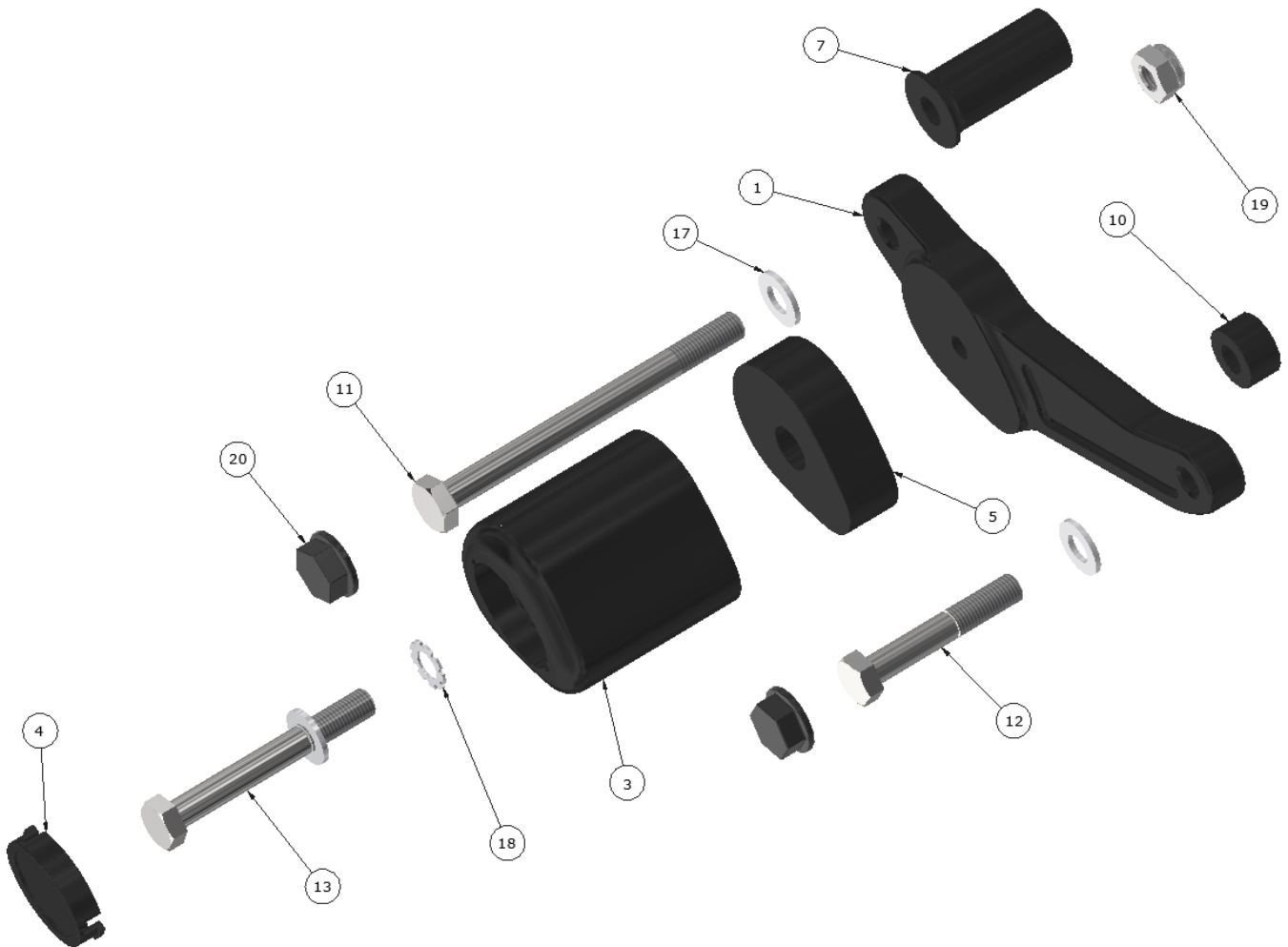
R&G

Unit 1, Shelley's Lane, East Worldham, Alton, Hampshire, GU34 3AQ

Tel: +44 (0)1420 89007 Fax: +44 (0)1420 87301 www.rg-racing.com Email: info@rg-racing.com



ASSEMBLY DIAGRAM – LHS



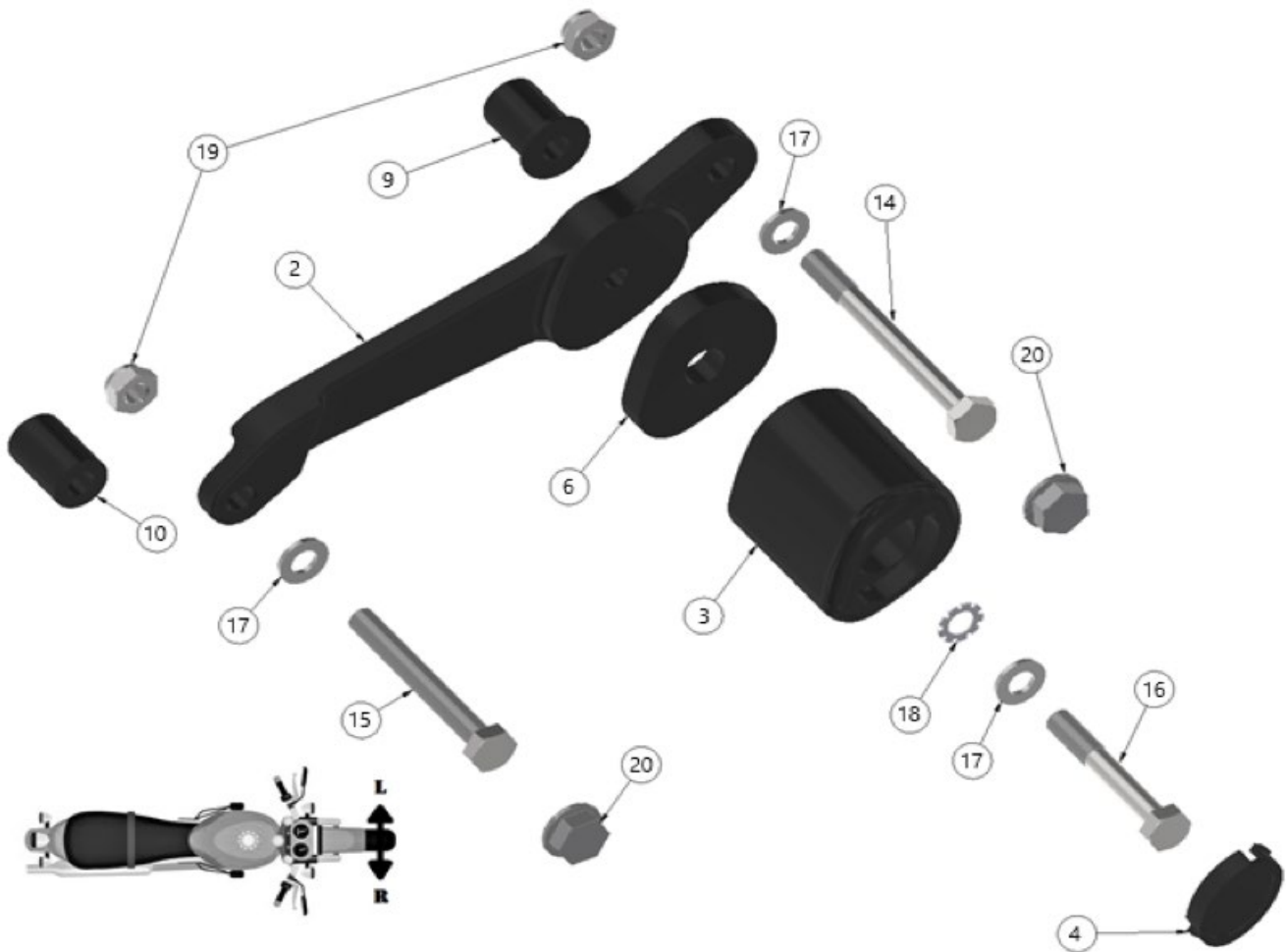
R&G

Unit 1, Shelley's Lane, East Worldham, Alton, Hampshire, GU34 3AQ

Tel: +44 (0)1420 89007 Fax: +44 (0)1420 87301 www.rg-racing.com Email: info@rg-racing.com



ASSEMBLY DIAGRAM - RHS



R&G

Unit 1, Shelley's Lane, East Worldham, Alton, Hampshire, GU34 3AQ

Tel: +44 (0)1420 89007 Fax: +44 (0)1420 87301 www.rg-racing.com Email: info@rg-racing.com



AERO-STYLE CRASH PROTECTOR ORIENTATION



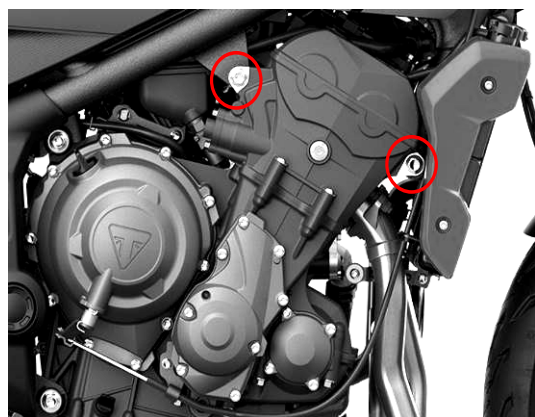
FITTING PICTURES



Picture 1



Picture 2



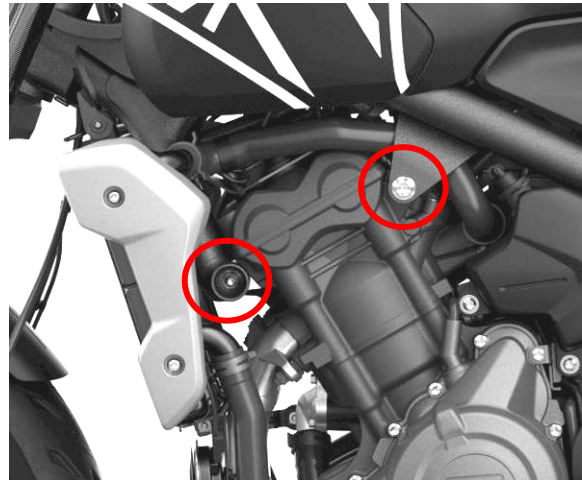
Picture 3



Picture 4



Picture 5



Picture 6



Picture 7



Picture 8

FITTING INSTRUCTIONS

PLEASE NOTE THAT BEFORE BEGINNING, YOU WILL NEED A SUITABLE JACK TO SUPPORT THE ENGINE WHEN REMOVING OEM ENGINE BOLTS. IF YOU ARE NOT COMFORTABLE CARRYING OUT THIS PROCEDURE, HAVE FITTED BY A QUALIFIED TECHNICIAN. READ ALL STEPS BEFORE PROCEEDING.

Removing of Radiator Shrouds

- Please remove the radiator side shrouds in order to access the front engine mounting bolts that must be removed in further steps.
- Remove the 1 x bolt on the inner side of the shroud as shown in **Picture 1** and the 2 x bolts holding on the remaining inner part of the shroud as shown in **Picture 2**.

R&G

Unit 1, Shelley's Lane, East Worldham, Alton, Hampshire, GU34 3AQ

Tel: +44 (0)1420 89007 Fax: +44 (0)1420 87301 www.rg-racing.com Email: info@rg-racing.com



Installation of RHS Mounting Plate

- Pace the jack underneath the engine in a central position and apply a light pressure to the underside of the engine **NOT** the exhaust or any other tubing (Please use a semi soft material (rubber/wood etc) as a bumper between the jack support area & the engine to cushion/spread the load which prevent any damage to the under-side of the engine).
- Slot 1 x M10 washer (**Item 17**) onto the M10 x 105mm hex head bolt (**Item 14**) and push through the RHS mounting plate (**Item 2**) & the 32mm tapered front RHS spacer (**Item 9**) shown in **Picture 4**.
- Remove the front RHS engine bolt seen in **Picture 3**.

PLEASE NOTE:

(A 17mm socket will be needed for the nut located on the back side of the engine bolt).

- With the OE engine bolt removed, push the M10 x 85mm hex head bolt (**Item 15**) with the mounting plate assembly through the original engine mounting hole.
- Using the supplied M10 Nyloc nut (**Item 19**) loosely tighten the bolt so that the mounting plate can still be rotated.
- The rear RHS engine bolt can now be removed as shown in **Picture 3**.
- Once removed, rotate the mounting plate into position and slide 1 x M10 washer (**Item 17**) onto the M10 x 85mm bolt (**Item 15**) and slide through the mounting plate followed by the 32mm single diameter rear RHS spacer (**Item 6**).
- Tighten down the front & rear bolt evenly and torque to their required setting as seen in **Picture 5**.

Installation of LHS Mounting Plate

- Slot 1 x M10 washer (**Item 19**) onto the M10 x 120mm hex head bolt (**Item 11**) and push through the LHS mounting plate (**Item 1**) & the 50mm tapered front LHS spacer (**Item 7**).
- Remove the front LHS engine bolt seen in **Picture 4**.

PLEASE NOTE:

(A second 17mm socket will be needed for the nut located on the back side of the engine bolt).

- With the OE engine bolt removed, push the M10 x 120mm bolt (**Item 11**) with the mounting plate assembly through the original engine mounting hole.
- Using the supplied M10 Nyloc nut (**Item 19**) loosely tighten the bolt so that the mounting plate can be rotated.
- The rear LHS engine bolt can now be removed as shown in **Picture 6**.

R&G

Unit 1, Shelley's Lane, East Worldham, Alton, Hampshire, GU34 3AQ

Tel: +44 (0)1420 89007 Fax: +44 (0)1420 87301 www.rg-racing.com Email: info@rg-racing.com



- Once removed, rotate the mounting plate into position, slide 1 x M10 washer (**Item 17**) onto the remaining M10 x 55mm bolt (**Item 12**) and slide through the mounting plate followed by the 5mm single diameter rear LHS spacer (**Item 8**).
- Tighten down the front & rear bolt evenly and torque to their required setting as shown in **Picture 7**.

Crash Protector Installation

- Firstly, slide 1 x flat washer (**Item 17**) followed by 1 x shake proof washer (**Item 18**) over both the M10 x 90mm (**Item 13**) & M10 x 80mm (**Item 16**).
- Push both bolts through a crash bobbin (**Item 3**), then slide the 24mm thick aero spacer (**Item 6**) over the RHS 80mm bolt (**Item 16**) assembly & the thicker 32mm bobbin spacer (**Item 5**) over the LHS 90mm bolt (**Item 13**) assembly.
- Thread each assembly into the mounting plates taking care not to cross thread.
- Once seated against the mounting plates, the bobbins & spacers may need to be held in place while the bolts are torqued to stop them from rotating.
- Please do not exceed 40N/m of torque when tightening the bobbins.
- Once all bolts have been torqued, apply the bobbin caps (**Item 4**) and bolt covers (**Item 20**) as shown in **Picture 8**.

ISSUE 1 - 30/03/2022 (AO)

CONSUMER NOTICE

The catalogue description and any exhibition of samples are only broad indications of the Products and R&G may make design changes which do not diminish their performance or visual appeal and supplying them in such state shall conform to the order. The Buyer acknowledges no representation or warranty (other than as to title) has been given or will apply to the Products other than those in R&G's order or confirmation and the Buyer confirms it has chosen the Products as being of merchantable quality and suitable for its particular purposes. Where R&G fits the Products or undertakes other services it shall exercise reasonable skill and care and rectify any fault free of charge unless the workmanship has been disturbed. The Buyer is responsible for ensuring that the warranty on the motorcycle is not affected by the fitting of the Products. On return of any defective Products R&G shall at its option either supply a replacement or refund the purchase money but shall not be liable if the Products have been modified or used or maintained otherwise than in accordance with R&G's or manufacturer's instructions and good engineering practice or if the defect arises from accident or neglect. Other than identified above and subject to R&G not limiting its liability for causing death and personal injury, it shall not be liable for indirect or consequential loss and otherwise its liability shall be limited to the amounts paid by the Buyer for the Products or the fitting or service concerned. These terms do not affect the Buyer's statutory rights.

R&G RETURNS POLICY (NON-FAULTY GOODS)

Returns must be pre-authorized (if not pre-authorized the return will be rejected). Goods may only be returned direct to us if they were purchased direct from us (customer must prove if necessary). Otherwise to be returned to original vendor. Goods must be in re-sellable condition, in the opinion of R&G. All returns are subject to a 25% restocking and handling fee (25% of the gross value exc. P&P – at the prevailing price at time of purchase). The customer must pay any and all carriage charges. No returns of discontinued products, unless within 14 days of purchase. This policy does not affect your statutory rights and does not refer to faulty goods.

R&G

Unit 1, Shelley's Lane, East Worldham, Alton, Hampshire, GU34 3AQ

Tel: +44 (0)1420 89007 Fax: +44 (0)1420 87301 www.rg-racing.com Email: info@rg-racing.com