



FITTING INSTRUCTIONS FOR LP0202BK LICENCE PLATE BRACKET
FOR KTM SUPERDUKE GT 2016-
(FOR USE WITH STANDARD AND R&G MINI INDICATORS (8mm))



THIS KIT CONTAINS THE ITEMS PICTURED AND LABELLED OVER PAGE.

SOME PARTS MAY BE SHOWN FOR CLARITY OF INSTRUCTIONS ONLY.

DO NOT PROCEED UNTIL YOU ARE SURE ALL PARTS ARE PRESENT.

PLEASE READ ALL INSTRUCTIONS BEFORE PROCEEDING.

**IF IN ANY DOUBT WHEN FITTING OUR PRODUCTS, CONSULT ONE OF OUR DEALERS
OR HAVE FITTED BY A QUALIFIED TECHNICIAN.**

PLEASE NOTE THAT THE WAY THE KIT IS PACKED DOES NOT NECESSARILY REPRESENT THE WAY OF
MOUNTING TO THE BIKE.

IN THE EVENT OF RUBBER WASHERS BEING USED TO HOLD COMPONENTS ONTO BOLTS,
THESE RUBBER WASHERS CAN BE THROWN AWAY.

DIGITAL COPIES OF THESE INSTRUCTIONS ARE AVAILABLE FROM:

WWW.RG-RACING.COM

R&G

Unit 1, Shelley's Lane, East Worldham, Alton, Hampshire, GU34 3AQ

Tel: +44 (0)1420 89007 Fax: +44 (0)1420 87301 www.rg-racing.com Email: info@rg-racing.com



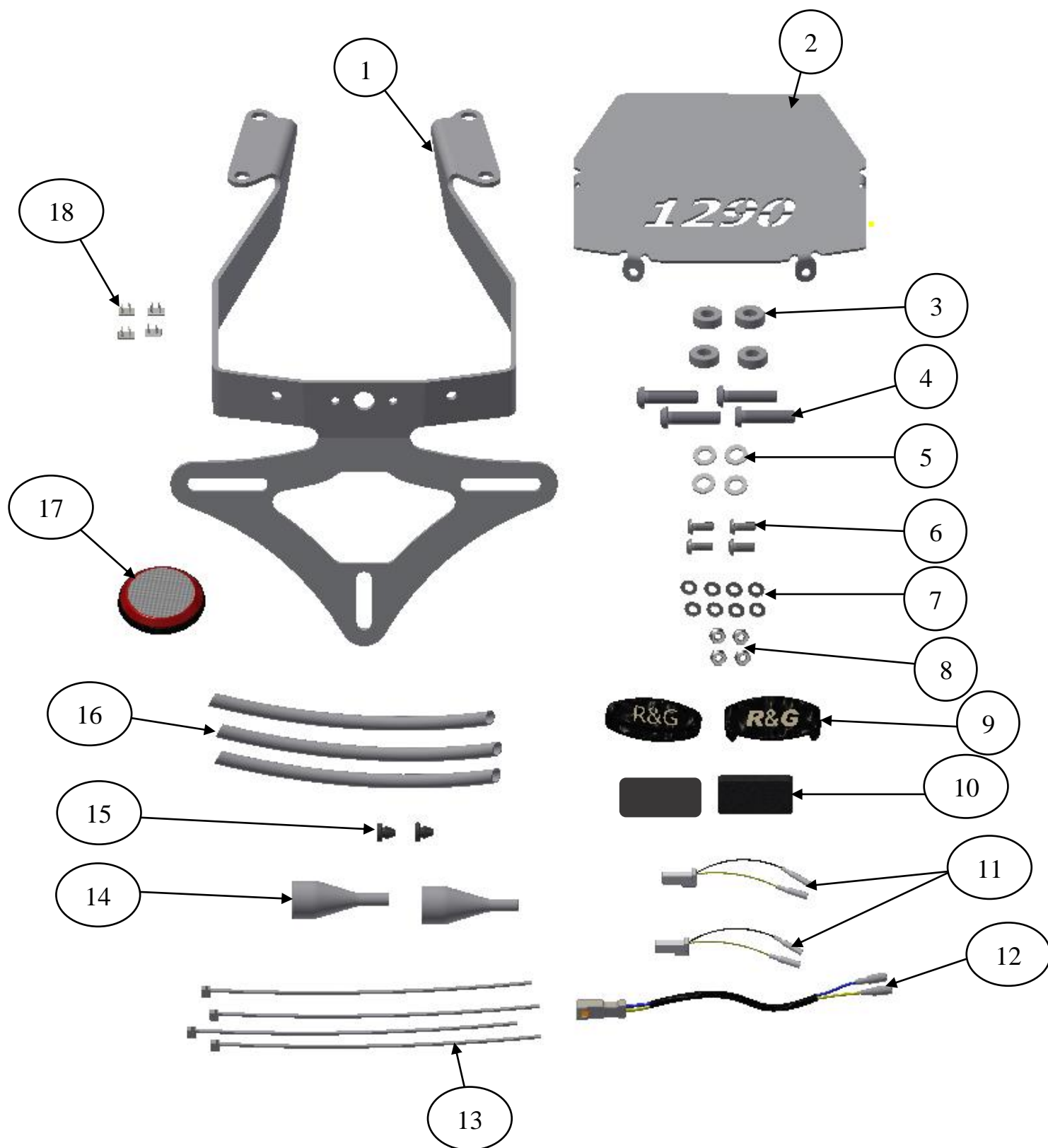
<u>TOOLS REQUIRED</u>	<u>GENERAL TORQUE SETTINGS</u>
<ul style="list-style-type: none"> • Set of metric Allen keys to include 3, 4 & 5mm A/F sizes. <ul style="list-style-type: none"> • T15 Torx bit or key. • 10 and 13mm spanner or socket and wrench. <ul style="list-style-type: none"> • Phillips type driver. • Sharp knife or scissors. • Small amount of adhesive. 	M4 BOLT = 8Nm M5 BOLT = 12Nm M6 BOLT = 15Nm M8 BOLT = 20Nm M10 BOLT = 40Nm M12 BOLT = 40Nm

ITEM NO.	LEGEND	QTY
ITEM 1	LICENCE PLATE BRACKET/COVER PLATE (TB0202 PART 1)	1
ITEM 2	LICENCE PLATE COVER BRACKET (TB0202 PART 4)	1
ITEM 3	SPACERS (S0967=8mm wide) (x1)	4
ITEM 4	M6 x 25mm LONG BUTTON HEAD BOLTS	4
ITEM 5	M6 WASHERS	4
ITEM 6	M4 x 10mm LONG BUTTON HEAD BOLTS	4
ITEM 7	M4 WASHERS	8
ITEM 8	M4 NYLOC NUT	4
ITEM 9	LIGHT ASSEMBLY COMPLETE (LA0002-INC. SHROUD)	1
ITEM 10	NEOPRENE GASKET (NG0005)	2
ITEM 11	R&G MINI INDICATOR CONNECTORS (CON0014)	2
ITEM 12	LICENCE PLATE ILLUMINATOR CONNECTOR (CON0026)	1
ITEM 13	2.5mm CABLE TIES (CT0220)	4
ITEM 14	INDICATOR WIRING COVERS (IWC0002)	2
ITEM 15	RUBBER BLANKING GROMMET (RB50-20—00FG)	2
ITEM 16	400mm LENGTH OF HEATSHRINK	3
ITEM 17	REFLECTOR (REFL 3)	1
ITEM 18	SELF ADHESIVE CLIPS	4

R&G

Unit 1, Shelley's Lane, East Worldham, Alton, Hampshire, GU34 3AQ

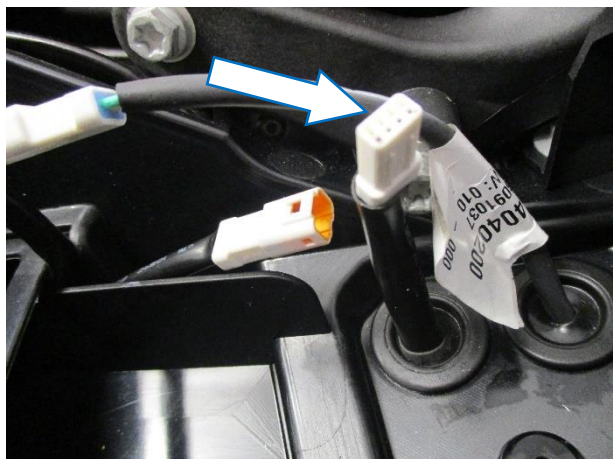
Tel: +44 (0)1420 89007 Fax: +44 (0)1420 87301 www.rg-racing.com Email: info@rg-racing.com



R&G

Unit 1, Shelley's Lane, East Worldham, Alton, Hampshire, GU34 3AQ

Tel: +44 (0)1420 89007 Fax: +44 (0)1420 87301 www.rg-racing.com Email: info@rg-racing.com



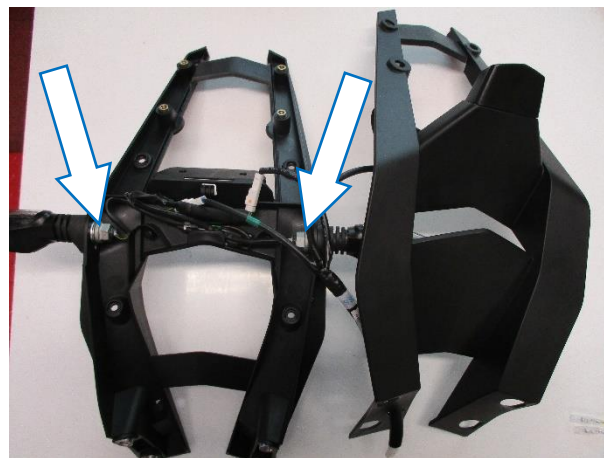
PICTURE 1



PICTURE 2



PICTURE 3



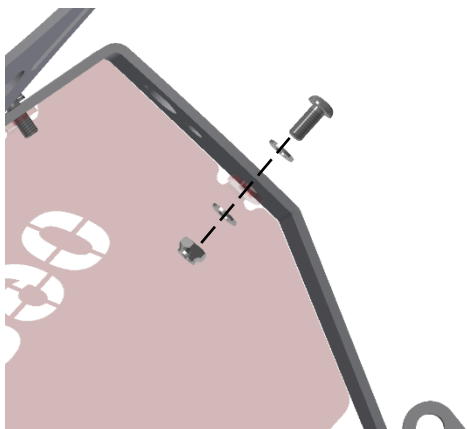
PICTURE 4



PICTURE 5



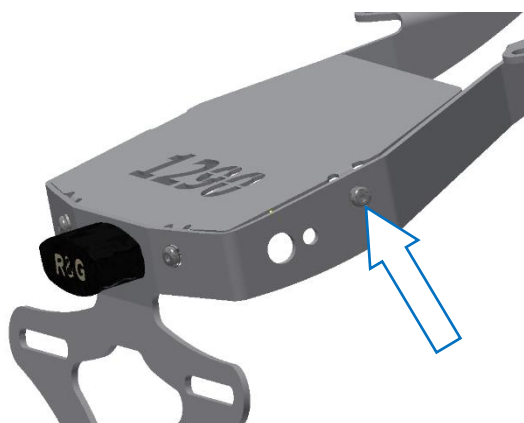
PICTURE 6



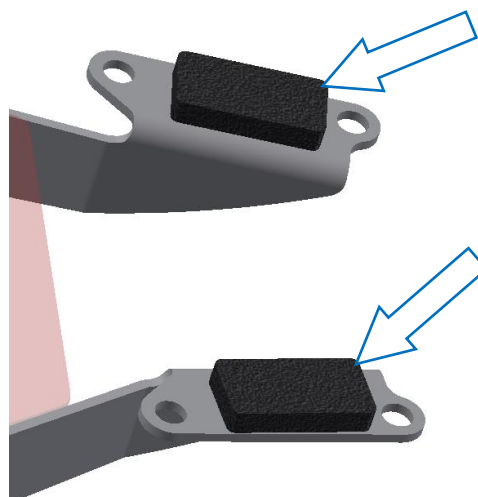
PICTURE 7



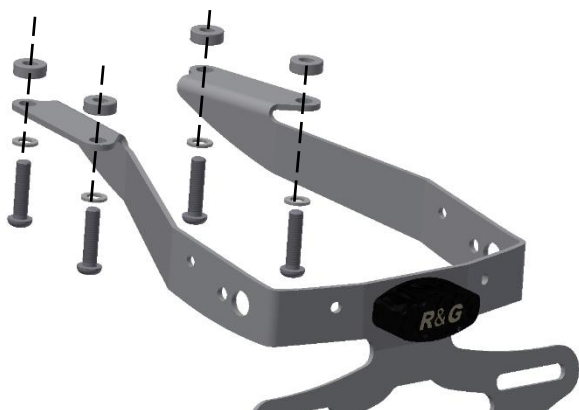
PICTURE 8



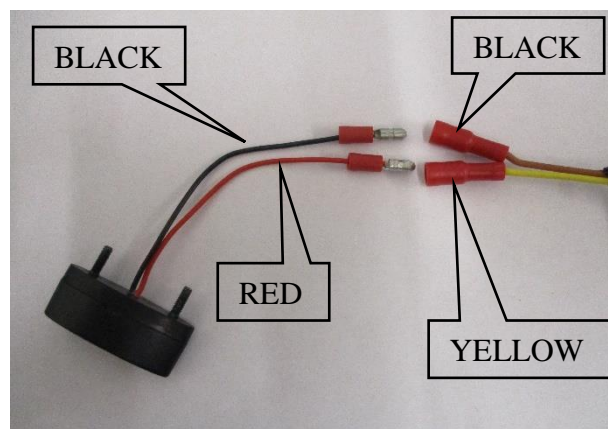
PICTURE 9



PICTURE 10



PICTURE 11



PICTURE 12

R&G

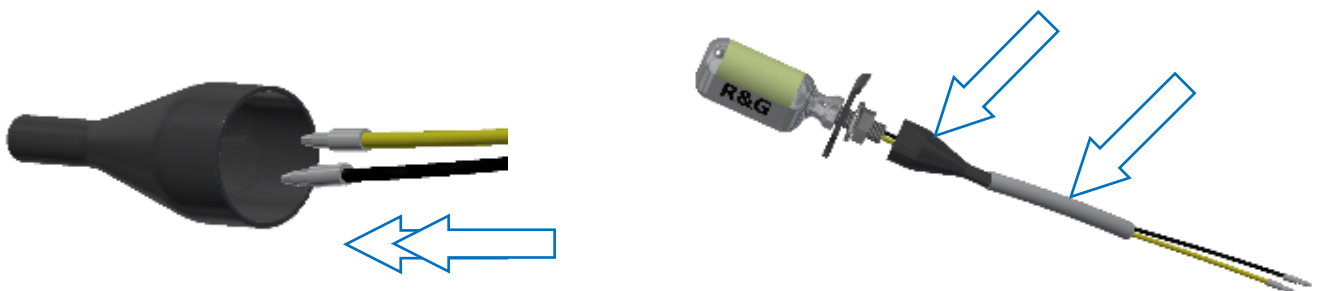
Unit 1, Shelley's Lane, East Worldham, Alton, Hampshire, GU34 3AQ

Tel: +44 (0)1420 89007 Fax: +44 (0)1420 87301 www.rg-racing.com Email: info@rg-racing.com



FITTING INSTRUCTIONS

- REMOVE SEAT USING KEY.
- DISCONNECT THE TAIL LIGHT ELECTRICAL CONNECTOR AS ARROWED IN **PICTURE 1**.
- FROM BELOW, REMOVE THE FOUR BOLTS ARROWED IN **PICTURE 2** USING A 10mm SOCKET AND A WRENCH. GENTLY WITHDRAW THE OEM LICENCE PLATE BRACKET AND THE WIRING.
- ON THE OEM LICENCE PLATE BRACKET, REMOVE THE 6 SCREWS ARROWED IN **PICTURE 3** USING A T15 TORX KEY.
- GENTLY SPLIT THE OEM LICENCE PLATE BRACKET IN A HALF. PLEASE NOTE THE ORIENTATION OF THE CONNECTORS AS THEY NEED TO BE RECONNECTED AT A LATER STAGE. DISCONNECT ALL ELECTRICAL CONNECTORS (INDICATORS AND LICENCE PLATE ILLUMINATOR) FROM THE SUB-HARNESS.
- REMOVE THE INDICATOR NUTS AS ARROWED IN **PICTURE 4** USING A 13MM SPANNER. REMOVE THE INDICATORS AND ITS WIRING FROM THE OEM LICENCE PLATE BRACKET. PLEASE NOTE THE ORIENTATION LOCATION OF THE INDICATORS.
- REMOVE THE SUB-HARNESS COMPLETELY FROM THE OEM LICENCE PLATE BRACKET AS SHOWN IN **PICTURE 5**.
- FROM THE KIT, TAKE THE R&G LICENCE PLATE BRACKET (**ITEM 1**) AND ATTACH R&G LICENCE PLATE ILLUMINATOR (**ITEM 9**) THROUGH THE 3 IN-LINE HOLES AS ARROWED IN **PICTURE 6**. SECURE THE LICENCE PLATE ILLUMINATOR USING THE WASHERS AND NUTS PROVIDED IN THE KIT.
- FIT LICENCE PLATE SHROUD USING A SMALL AMOUNT OF SUPER-GLUE OVER THE LICENCE PLATE ILLUMINATOR (**ITEM 9**) (**SHOWN IN PICTURE 6**).
- PLACE THE LICENCE PLATE COVER BRACKET (**ITEM 2**) INTO POSITION AND SECURE IN POSITION USING THE M4 BOLTS, WASHERS AND NUTS (**ITEMS 6, 7 and 8**) AS SHOWN IN **PICTURES 7, 8 AND 9**. STICK THE TWO SELF ADHESIVE FOAM PADS (**ITEM 10**) INTO POSITION AS SHOWN IN **PICTURE 10**.
- FROM THE KIT, TAKE THE FOUR M6 x 20mm BOLTS (**ITEM 4**), M6 WASHERS (**ITEM 5**) AND 8mm SPACERS (**ITEM 3**). INSERT THEM INTO THE FOUR MOUNTING HOLES AS SHOWN IN **PICTURE 11**.
- FIT THE OEM INDICATORS AS ORIGINAL AND SECURE WITH OEM NUTS REMOVED EARLIER.
- IF USING R&G MINI OR AERO INDICATORS:
 1. FIT THE INDICATORS ONTO THE LICENCE PLATE BRACKET (**ITEM 1**) AND TIGHTEN THE NUT.



2. FROM THE KIT, TAKE THE WIRING COVERS (**ITEM 14**) AND FEED THE INDICATOR WIRE THROUGH AS SHOWN ABOVE, THEN FEED THE HEAT SHRINK TUBE (**ITEM 16**) OVER THE WIRES AND OVER THE TAIL OF THE WIRING COVER AND GENTLY HEAT TO CONTRACT TO THE COVER TAIL AND WIRES.
3. USE THE RUBBER GROMMETS (**ITEM 15**) TO BLANK THE REMAINING HOLES.

R&G

Unit 1, Shelley's Lane, East Worldham, Alton, Hampshire, GU34 3AQ

Tel: +44 (0)1420 89007 Fax: +44 (0)1420 87301 www.rg-racing.com Email: info@rg-racing.com



- OFFER THE ASSEMBLY TO THE ORIGINAL MOUNTING POINTS ON THE OEM TAIL UNIT WHILE FEEDING ALL THE WIRING (INDICATORS AND LICENCE PLATE ILLUMINATOR WIRES) THROUGH THE ORIGINAL HOLE ON THE OEM TAIL UNIT AND SECURE IN POSITION.
- IF FITTING THE ORIGINAL INDICATOR, CONNECT THEM TO THE SUB HARNESS AS ORIGINAL, IF FITTING R&G MINI'S CONNECT TO THE SUB HARNESS USING THE SUPPLIED CONNECTORS (**ITEM 11**).
- FROM THE KIT, TAKE THE HEAT SHRINK TUBE (**ITEM 16**) AND CUT IT TO A SUITABLE LENGTH. FEED BOTH WIRES FROM THE LICENCE PLATE ILLUMINATOR (ITEM 9) THROUGH. PLEASE LEAVE AT LEAST 25mm OF WIRES EXPOSED FROM THE TUBE. USING A SUITABLE HEAT SOURCE, SHRINK THE HEAT-SHRINK TUBE.
- FROM THE KIT, USE THE LICENCE PLATE ILLUMINATOR CONNECTOR (**ITEM 12**) TO CONNECT TO THE LICENCE PLATE ILLUMINATOR TO THE OEM SUB-HARNESS. IF LIGHT FAILS TO ILLUMINATE, PLEASE SWAP THE BULLET CONNECTORS OVER.
- RECONNECT THE MAIN SUB-HARNESS MALE CONNECTOR TO THE OEM FEMALE CONNECTOR IN MAIN HARNESS AS ORIGINAL.
- IT IS ADVISABLE TO CHECK OPERATION OF ALL LIGHTS AT THIS STAGE.
- TIDY UP THE WIRING USING THE CABLE TIES AND SELF-ADHESIVE CLIPS (**ITEMS 13 and 18**) PROVIDED.
- REFIT LICENCE PLATE (IT MAY REQUIRE DRILLING).
- **IMPORTANT: IF FITTING A FULL-SIZE LICENCE PLATE AND PLACING IT FAR DOWN ON THE LICENCE PLATE HANGER, THERE IS A SMALL CHANCE OF THE LICENCE PLATE HITTING THE BACK WHEEL UNDER HEAVY LOAD AND OVER LARGE BUMPS IN THE ROAD. IT IS YOUR RESPONSIBILITY TO CHECK FOR THIS POSSIBILITY AND TAKE AVOIDING ACTION. FAILURE TO CHECK THIS COULD RESULT IN SERIOUS INJURY.**
- REFIT SEAT.
- DEPENDING ON LOCAL LAWS, ATTACH ENCLOSED RED REFLECTOR (ITEM 17) IN AN APPROPRIATE LOCATION.
- TEST THE INDICATORS (TURN SIGNALS), LICENCE PLATE ILLUMINATOR AND ALL LIGHTS BEFORE RIDING.

ISSUE 1 28/09/2020 (NSY)

CONSUMER NOTICE

The catalogue description and any exhibition of samples are only broad indications of the Products and R&G may make design changes which do not diminish their performance or visual appeal and supplying them in such state shall conform to the order. The Buyer acknowledges no representation or warranty (other than as to title) has been given or will apply to the Products other than those in R&G's order or confirmation and the Buyer confirms it has chosen the Products as being of merchantable quality and suitable for its particular purposes. Where R&G fits the Products or undertakes other services it shall exercise reasonable skill and care and rectify any fault free of charge unless the workmanship has been disturbed. The Buyer is responsible for ensuring that the warranty on the motorcycle is not affected by the fitting of the Products. On return of any defective Products R&G shall at its option either supply a replacement or refund the purchase money but shall not be liable if the Products have been modified or used or maintained otherwise than in accordance with R&G's or manufacturer's instructions and good engineering practice or if the defect arises from accident or neglect. Other than identified above and subject to R&G not limiting its liability for causing death and personal injury, it shall not be liable for indirect or consequential loss and otherwise its liability shall be limited to the amounts paid by the Buyer for the Products or the fitting or service concerned. These terms do not affect the Buyer's statutory rights.

R&G RETURNS POLICY (NON-FAULTY GOODS)

Returns must be pre-authorised (if not pre-authorised the return will be rejected). Goods may only be returned direct to us if they were purchased direct from us (customer must prove if necessary). Otherwise to be returned to original vendor. Goods must be in re-sellable condition, in the opinion of R&G. All returns are subject to a 25% restocking and handling fee (25% of the gross value exc. P&P – at the prevailing price at time of purchase). The customer must pay any and all carriage charges. No returns of discontinued products, unless within 14 days of purchase. This policy does not affect your statutory rights and does not refer to faulty goods.

R&G

Unit 1, Shelley's Lane, East Worldham, Alton, Hampshire, GU34 3AQ

Tel: +44 (0)1420 89007 Fax: +44 (0)1420 87301 www.rg-racing.com Email: info@rg-racing.com