



FITTING INSTRUCTIONS FOR LP0262BK LICENCE PLATE BRACKET
KAWASAKI NINJA ZX6R 2019-



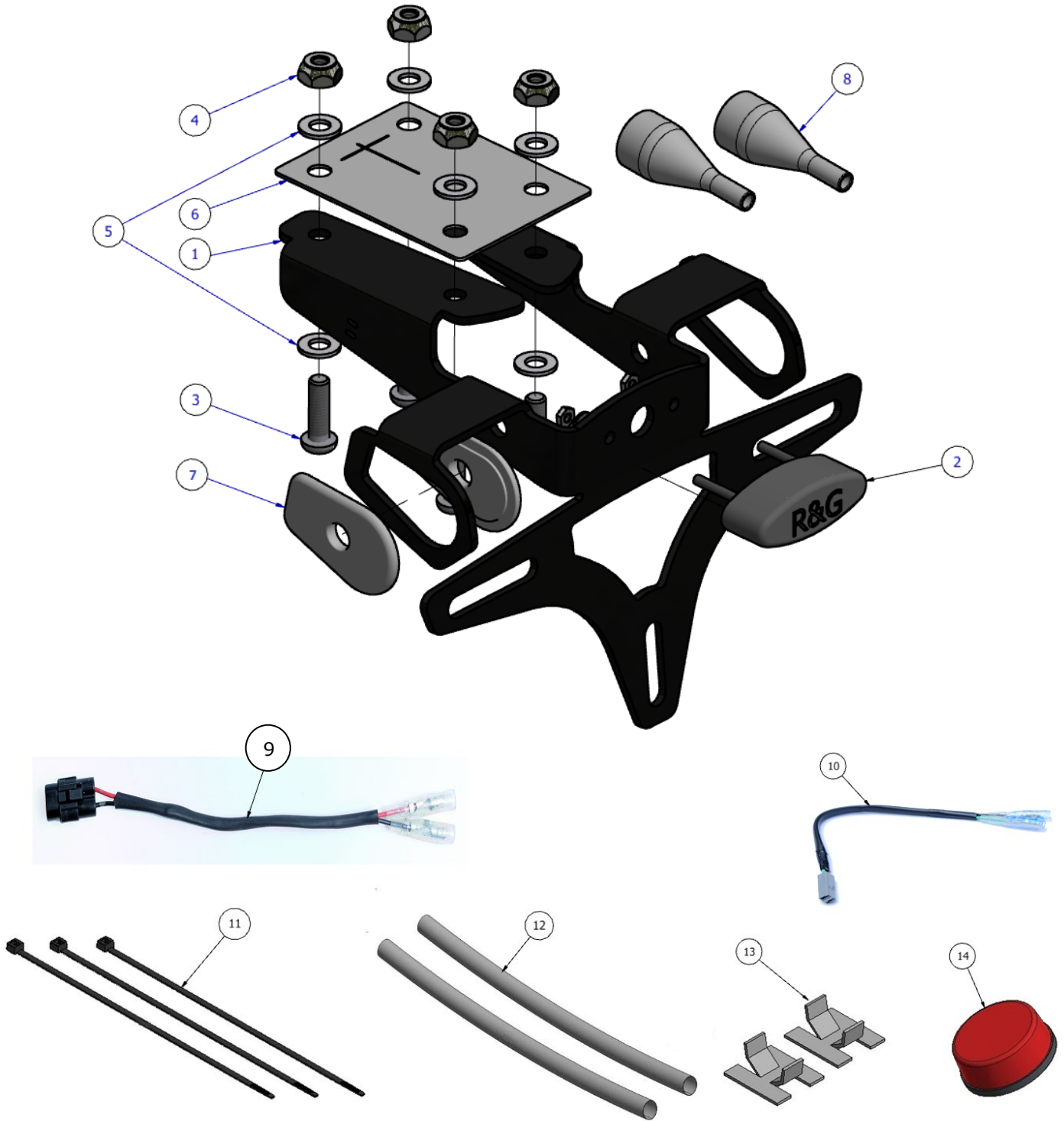
THIS KIT CONTAINS THE ITEMS PICTURED AND LABELLED BELOW.
DO NOT PROCEED UNTIL YOU ARE SURE ALL PARTS ARE PRESENT.

Please note that the way the kit is packed does not necessarily represent the way of mounting to the bike.

THE PARTS SHOWN MAY BE REPRESENTATIVE ONLY (FOR CLARITY OF INSTRUCTIONS ONLY).

Please note that in cases where kits are packed with rubber washers holding the components onto the bolt – *the rubber washers should be thrown away!*

Digital copies of these instructions are available to download from www.rg-racing.com





LEGEND

ITEM 1 = TB0262 LICENCE PLATE MOUNTING BRACKET
ITEM 2 = LA0002 No PLATE LIGHT ASSEMBLY (INCLUDING SHROUD)
ITEM 3 = M6x1x20mm LONG BUTTON HEAD BOLTS (4)
ITEM 4 = M6 NYLOC NUTS (4)
ITEM 5 = M6 WASHERS 14mm O/DIA (8)
ITEM 6 = RG28 RUBBER GASKET
ITEM 7 = I0039 INDICATOR ADAPTORS (4)
ITEM 8 = IWC0002 MINI INDICATOR WIRING COVERS (2)
ITEM 9 = No PLATE LIGHT CONNECTOR - CON0051
ITEM 10 = MINI INDICATOR CONNECTORS - CON0032 (2)
ITEM 11 = 2.5mm CABLE TIES x 100mm LONG (4)
ITEM 12 = 150mm length of heat-shrink (3)
ITEM 13 = Self-adhesive cable clips (3)
ITEM 14 = REFLECTOR

TOOLS REQUIRED

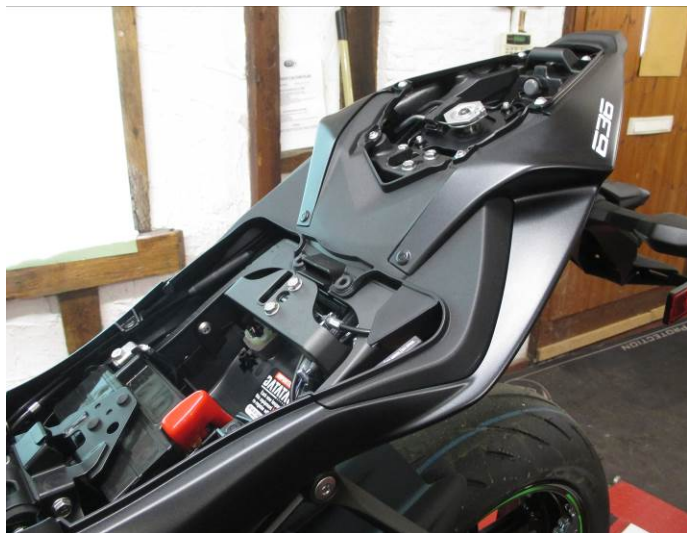
- Set of metric Allen keys to include 4mm and 5 mm.
 - Phillips head screwdriver.
- Socket set to include 6mm, 10mm and A-F sockets and wrench.
 - Small amount of adhesive

MAXIMUM TORQUE SETTINGS

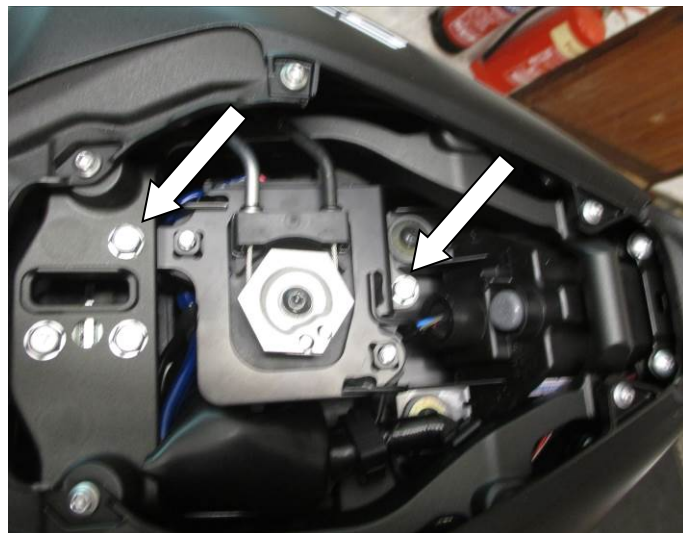
- M4 BOLT = 8Nm
- M5 BOLT = 12Nm
- M6 BOLT = 15Nm
- M8 BOLT = 20Nm
- M10 BOLT = 40Nm

R&G

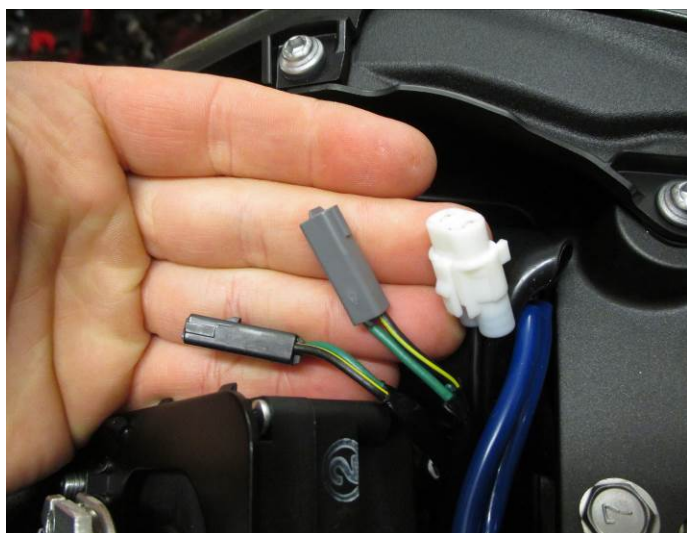
Unit 1, Shelley's Lane, East Worldham, Alton, Hampshire, GU34 3AQ
Tel: +44 (0)1420 89007 Fax: +44 (0)1420 87301 www.rg-racing.com Email: info@rg-racing.com



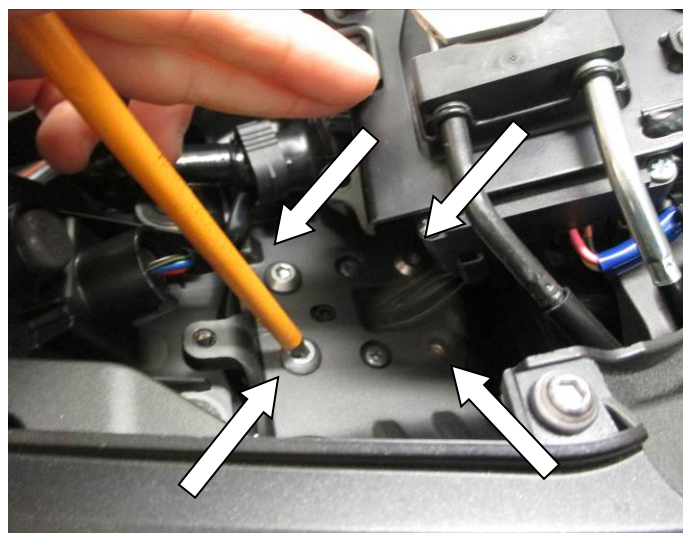
Picture 1



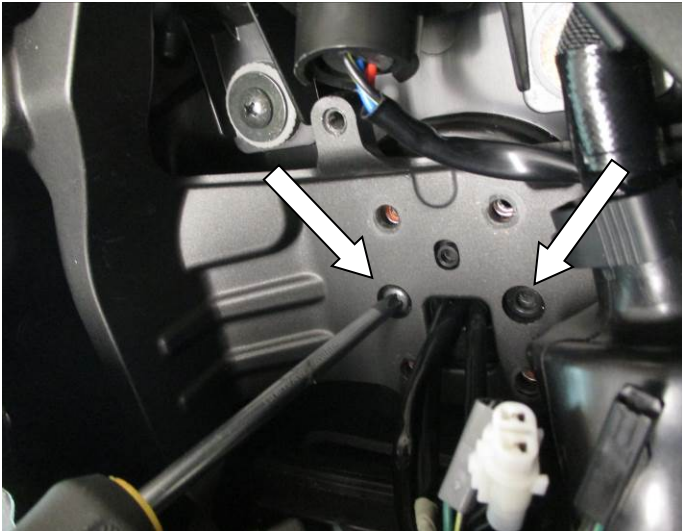
Picture 2



Picture 3



Picture 4



Picture 5



Picture 6



Picture 7



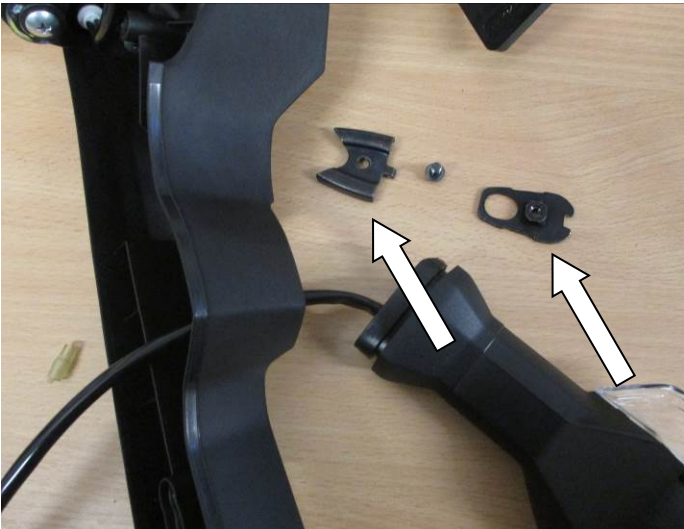
Picture 8



Picture 9



Picture 10



Picture 11



Picture 12



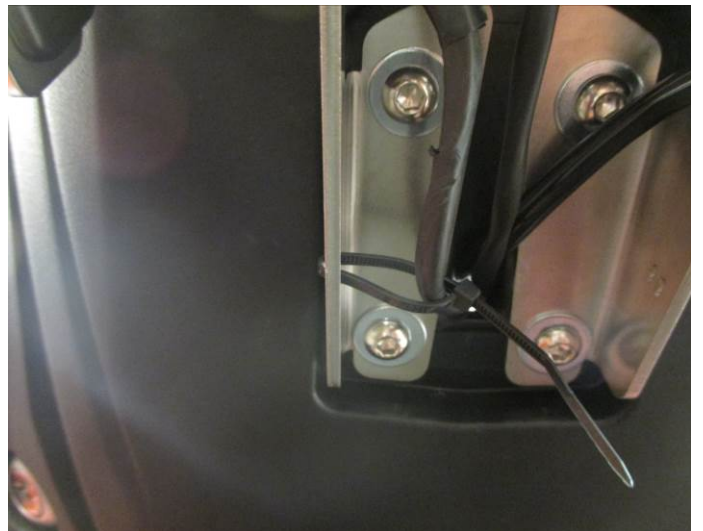
Picture 13



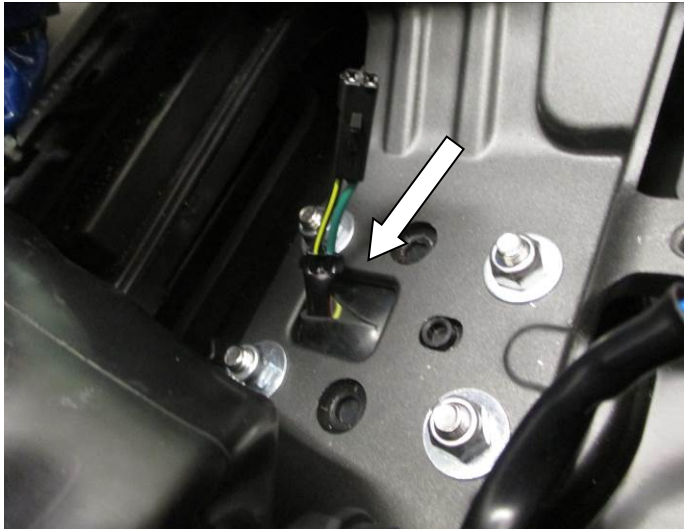
Picture 14



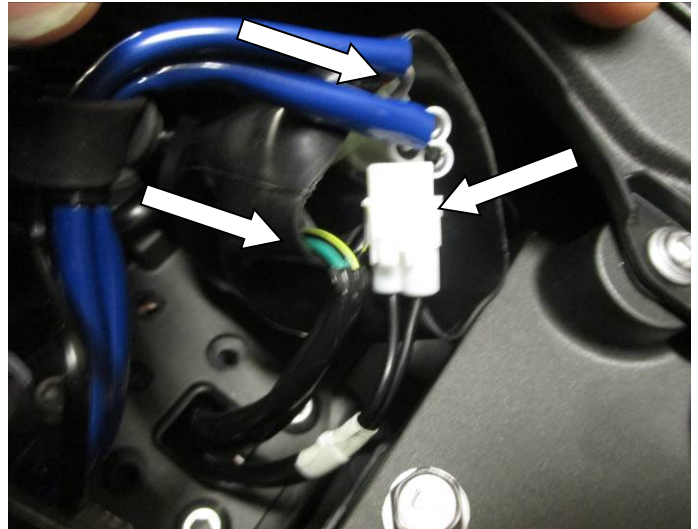
Picture 15



Picture 16



Picture 17



Picture 18





FITTING INSTRUCTIONS

- Remove both seats, using the lock under the tail for the rider seat. Then use the release cable found under the front seat to detach rear pillion seat as in picture 1.
- Remove the two hex bolts arrowed in picture 2 to move the seat lock mechanism from its mount, carefully move this aside to access the bolts underneath.
- You will find three wires protruding through the base of the tail unit underneath the lock mechanism just moved, trace these wires and disconnect them at the connector as shown in picture 3, note the indicator wires are colour coded.
- To remove the OEM licence plate bracket unit, use a 5mm allen key to remove the 4 bolts arrowed in picture 4
- While supporting the tail unit from underneath, remove the remaining two phillips head screws shown in picture 5.
- Carefully lower the OEM licence plate bracket away from the bike, making sure to carefully guide the indicator and number plate light wires through the hole in the tail unit as shown in picture 6, taking note of the wiring route.

If re-using the OEM indicators

- You will need to disassemble the OEM licence plate bracket in order to remove the indicators, begin by removing the two screws on the left side of the unit as arrowed in picture 7.
- Next using a 10mm socket remove the hex nut on the rear of the reflector as shown in picture 8.
- Carefully split the tail unit down the middle as shown in picture 9, careful not to damage any locking tabs that may be holding the unit together.
- To remove each indicator, a cover plate should be removed with a phillips screw driver as shown in picture 10.
- You can now remove the outer and inner plate from the indicator rubber as shown in picture 11.
- Carefully remove the OEM indicator (making sure any plates, washers, and plastic inserts are put to one side for later use) by gently pulling it out of the licence plate mount. Take note of which indicator belongs on each side of the bike.
- The indicators can now be assembled to their corresponding mounting points on the tail bracket (item 1) in the same way they were removed using the inner plates (See picture 12). Note, a small amount of washing up liquid may be used to aid in fitting the rubber to the tail bracket.

If using R&G Mini indicators

- NOTE: 1 x set of RGR0002 resistors (available separately) may be required to achieve the correct flash rate.
- Put the tail unit to one side and make sure it is stored safely so the bike can be returned to standard if desired.

R&G

Unit 1, Shelley's Lane, East Worldham, Alton, Hampshire, GU34 3AQ
Tel: +44 (0)1420 89007 Fax: +44 (0)1420 87301 www.rg-racing.com Email: info@rg-racing.com



- Fit one length of heat shrink (Item 12) over each pair of indicator wires and heat with a hot air gun or hair dryer to neatly hold and protect the wires.
- The indicators should be mounted to the tail tidy using two indicator adapter plates (item 7) as shown in the assembly diagram (on page 2) and picture 13, to do this thread the first indicator adapter (item 7) onto the mini indicator and through the tail bracket (item 1).
- Sandwich the tail bracket with another indicator adapter, ensuring both raised faces sit into the bracket mount, and secure in place using the locking nut provided with the indicator. Do NOT overtighten.
- At this point you can slide an indicator wiring cover (item 8) over each indicator wire as arrowed in picture 13 and feed the bullet connectors and wires through the hole in the tail bracket.
- Finally attach one Mini indicator connector (item 10) to the bullet connectors of the indicators using the colours labelled below:
 - *Black -> Black*
 - *Yellow -> Green*

Licence plate illuminator

- Once indicators are fitted, the licence plate illuminator (item 2) can be assembled and fitted to the Tail bracket (item 1)
- The shroud provided should be fixed to the light using a small amount of superglue as shown in picture 14, the purpose of this is to direct the light onto the plate once fitted.
- Fit one length of heat shrink (Item 12) over the red and black wires and heat gently with a hot air gun or hairdryer to neatly hold and protect the wires.
- Thread the wires through the centre hole in the tail bracket (item 1) and thread through the mounting holes and affix using the washers and nuts provided with the light with a 6mm socket, as shown in picture 15
- Finally attach the number plate light connector (item 9) to the number plate light bullet connectors, matching the colours as mentioned below:
 - *Black -> Black*
 - *Red -> Red*
- With the tail unit now assembled you can now attach the assembly to your motorcycle. Do this by offering up the assembly into the recess left by the OEM tail unit, making sure to sandwich the RG28 rubber gasket (item 6) between the bracket and tail unit.
- Using your 4mm allen key and the four M6 x 20mm bolts (item 3) with one M6 washer (item 5) each, push this through the mounting hole and through the tail unit of the bike
- Secure these with another M6 washer (item 5) and M6 Nyloc nut (item 4) per bolt using your 10mm socket as shown in the assembly diagram (page 2) and pictures 16 & 17. Tighten these to the correct torque, do NOT overtighten as this could cause damage to the bike.
- At this stage you should use the cable ties provided (item 11) to neaten neatly fix these 3 wires to the tail unit using the small holes in the sides, as seen in picture 16. It is advised you leave these loose at this stage to aid in cable routing.

R&G

Unit 1, Shelley's Lane, East Worldham, Alton, Hampshire, GU34 3AQ
Tel: +44 (0)1420 89007 Fax: +44 (0)1420 87301 www.rg-racing.com Email: info@rg-racing.com



- Now the bracket should be securely affixed to the tail unit, feed the three wires from the indicators and licence plate illuminator through the rubber gasket and into the bike as noted in picture 17.
- After re-routing the wires as they were originally removed, re-connect the indicators and number plate light to the original connectors on the main wiring loom. Ensuring the correct indicator is connected to the corresponding side as in picture 18.
- At this point, turn on the ignition and check all lights function correctly, if lights fail to illuminate, check connections. If indicators do not illuminate, swap the bullet connectors round.
- Tighten any loose cable ties at this point so the wiring is neat and hidden from sight. You may wish to use the self-adhesive cable clips (item 13) to aid this.
- Check all bolts and screws are tightened to the correct torque.
- Reassemble the seat lock unit and both seats in the same way as they were removed.
- Mount the licence plate (it may require drilling) to the rear of the bracket low enough so that it does not cover the indicators.
- **IMPORTANT: IF FITTING A FULL-SIZE LICENCE PLATE AND PLACING IT FAR DOWN ON THE LICENCE PLATE HANGER, THERE IS A SMALL CHANCE OF THE LICENCE PLATE HITTING THE BACK WHEEL UNDER HEAVY LOAD AND OVER LARGE BUMPS IN THE ROAD. IT IS YOUR RESPONSIBILITY TO CHECK FOR THIS POSSIBILITY AND TAKE AVOIDING ACTION. FAILURE TO CHECK THIS COULD RESULT IN SERIOUS INJURY.**
- Depending on local laws, attach enclosed reflector (item 14) in an appropriate location
- Retest the licence plate illuminator and all lights before riding.

ISSUE 1 14/02/19 (DM)

CONSUMER NOTICE

The catalogue description and any exhibition of samples are only broad indications of the Products and R&G may make design changes which do not diminish their performance or visual appeal and supplying them in such state shall conform to the order. The Buyer acknowledges no representation or warranty (other than as to title) has been given or will apply to the Products other than those in R&G's order or confirmation and the Buyer confirms it has chosen the Products as being of merchantable quality and suitable for its particular purposes. Where R&G fits the Products or undertakes other services it shall exercise reasonable skill and care and rectify any fault free of charge unless the workmanship has been disturbed. The Buyer is responsible for ensuring that the warranty on the motorcycle is not affected by the fitting of the Products. On return of any defective Products R&G shall at its option either supply a replacement or refund the purchase money but shall not be liable if the Products have been modified or used or maintained otherwise than in accordance with R&G's or manufacturer's instructions and good engineering practice or if the defect arises from accident or neglect. Other than identified above and subject to R&G not limiting its liability for causing death and personal injury, it shall not be liable for indirect or consequential loss and otherwise its liability shall be limited to the amounts paid by the Buyer for the Products or the fitting or service concerned. These terms do not affect the Buyer's statutory rights.

R&G RETURNS POLICY (NON-FAULTY GOODS)

Returns must be pre-authorized (if not pre-authorized the return will be rejected). Goods may only be returned direct to us if they were purchased direct from us (customer must prove if necessary). Otherwise to be returned to original vendor. Goods must be in re-sellable condition, in the opinion of R&G. All returns are subject to a 25% restocking and handling fee (25% of the gross value exc. P&P – at the prevailing price at time of purchase). The customer must pay any and all carriage charges. No returns of discontinued products, unless within 14 days of purchase. This policy does not affect your statutory rights and does not refer to faulty goods.

R&G

Unit 1, Shelley's Lane, East Worldham, Alton, Hampshire, GU34 3AQ
 Tel: +44 (0)1420 89007 Fax: +44 (0)1420 87301 www.rg-racing.com Email: info@rg-racing.com



NOTICE DE MONTAGE POUR LP0262BK SUPPORT DE PLAQUE
KAWASAKI NINJA ZX6R 2019-



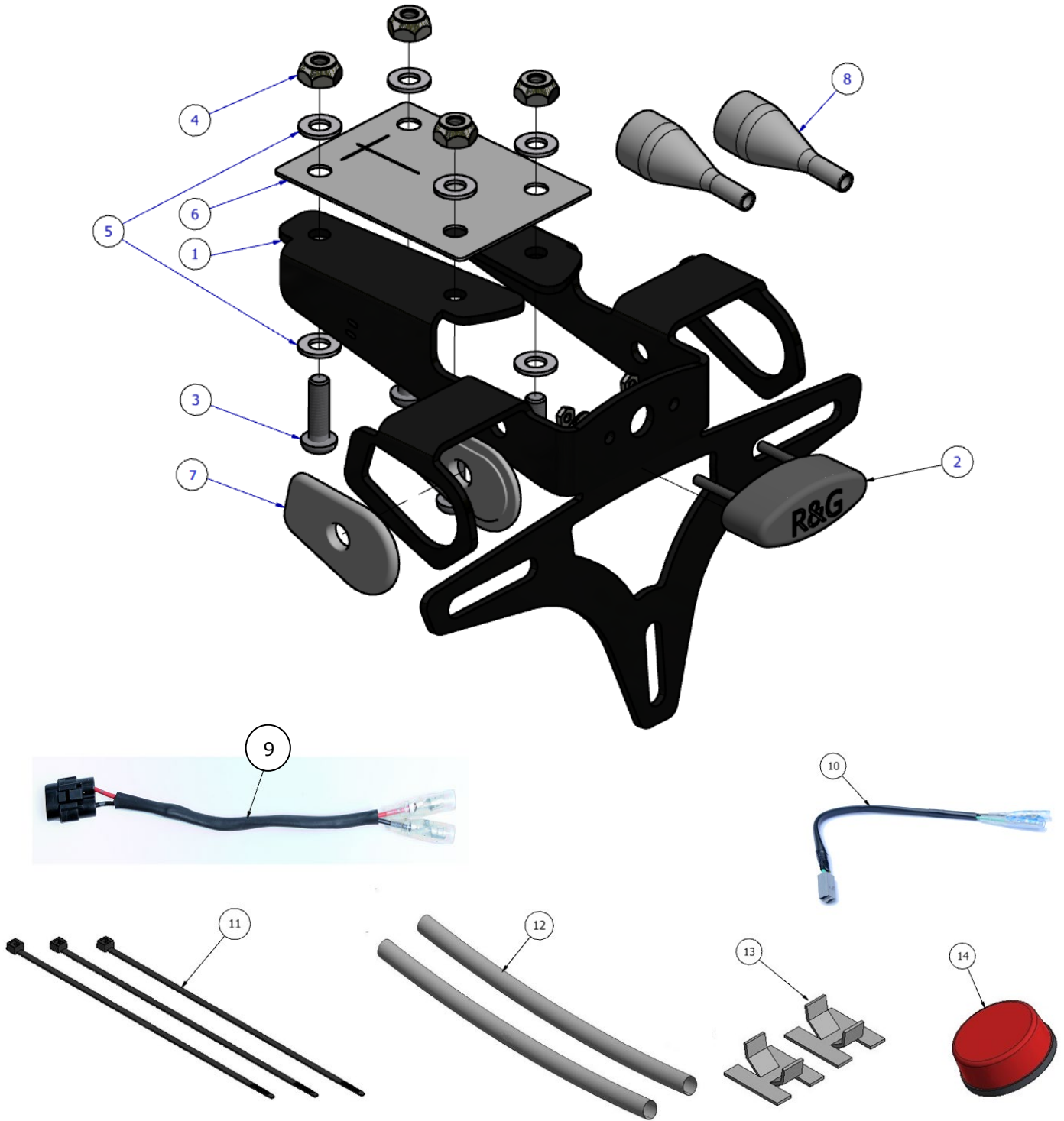
Le kit contient les articles exposés ci-dessous, vérifier que toutes les pièces soient présentes avant de procéder au montage.

La façon dont le kit est emballé ne correspond pas forcément à la façon de monter les pièces sur la moto.

LES PARTIES PRESENTÉES PEUVENT ÊTRE UNIQUEMENT REPRESENTATIVES (POUR LA CLARTÉ DES INSTRUCTIONS UNIQUEMENT).

Notez que si les kits sont emballés avec des rondelles en caoutchouc servant à tenir les composants, *ces rondelles doivent être jetées !*

Notice disponible au téléchargement sur www.rg-racing.com





LÉGENDE

- ARTICLE 1 = TB0262 SUPPORT DE PLAQUE
- ARTICLE 2 = LA0002 No ASSEMBLAGE DE FEU DE PLAQUE (LINCEUL INCLU)
- ARTICLE 3 = M6x1x20mm BOULONS (4)
- ARTICLE 4 = M6 ÉCROU (4)
- ARTICLE 5 = M6 RONDELLE 14mm O/DIA (8)
- ARTICLE 6 = RG28 MORCEAU DE CAOUTCHOUC
- ARTICLE 7 = I0039 ADAPTATEUR DE CLIGNOTANT (4)
- ARTICLE 8 = IWC0002 CACHE FIL DE MINI CLIGNOTANT (2)
- ARTICLE 9 = No CONNECTEUR DE FEU DE PLAQUE - CON0051
- ARTICLE 10 = CONNECTEUR DE MINI CLIGNOTANT- CON0032 (2)
- ARTICLE 11 = 2.5mm COLLIER DE SERRAGE x 100mm DE LONG (4)
- ARTICLE 12 = 150mm LONGUEUR DE MANCHON THERMO RÉTRACTABLE (3)
- ARTICLE 13 = CLIP CÂBLE AUTOCOLLANT (3)
- ARTICLE 14 = RÉFLECTEUR

OUTILS REQUIS

- Clés Allen 4 et 5mm.
- Tournevis cruciforme
- Clé à cliquet + douilles 6 et 10mm.
 - Un peu d'adhésif

VALEURS DE SERRAGE MAXIMALES

- M4 BOULON = 8Nm
- M5 BOULON = 12Nm
- M6 BOULON = 15Nm
- M8 BOULON = 20Nm
- M10 BOULON = 40Nm

R&G

Unit 1, Shelley's Lane, East Worldham, Alton, Hampshire, GU34 3AQ
Tel: +44 (0)1420 89007 Fax: +44 (0)1420 87301 www.rg-racing.com Email: info@rg-racing.com



NOTICE DE MONTAGE

- Enlever les 2 sièges, en ouvrant le verrou sous le support du siège du pilote. Ensuite, utiliser le câble déclenchement situé sous le siège avant pour détacher le siège passager, voir photo 1.
- Enlever les 2 boulons visibles sur la photo 2 pour bouger le mécanisme de blocage du siège de son support, décalez-le doucement sur le côté pour accéder aux boulons situés en dessous.
- Vous trouverez 3 fils dépassant de la base du support de plaque au-dessous du mécanisme de blocage tout juste décalé, tracez ces 3 fils puis déconnectez de leur connecteur, voir photo 3, notez que les fils de clignotants correspondent à un code couleur.
- Pour enlever le support de plaque d'origine, utiliser une clé Allen de 5mm pour enlever les 4 boulons visibles sur la photo 4.
- Tout en supportant le support de plaque par dessous, enlever les 2 vis restantes, voir photo 5.
- Baisser doucement le support de plaque d'origine de la moto, en veillant à guider correctement les fils de clignotant et de feu de plaque dans le trou du support de plaque, voir photo 6, en notant le cheminement des fils.

Si vous réutilisez les clignotants d'origine

- Vous devrez désassembler le support de plaque d'origine pour enlever les clignotants, en commençant par enlever les 2 vis du côté gauche du support de plaque, voir photo 7.
- Ensuite, utiliser une clé de 10mm pour enlever l'écrou à l'arrière du réflecteur, voir photo 8.
- Séparer délicatement le support de plaque au milieu, voir photo 9, attention à ne pas abîmer les onglets de fixation qui peuvent retenir l'unité complète en place.
- Pour enlever chaque clignotant, une plaque de recouvrement doit être enlevée à l'aide d'un tournevis cruciforme, voir photo 10.
- Vous pouvez maintenant enlever la plaque interne et externe du caoutchouc de clignotant, voir photo 11.
- Enlever délicatement le clignotant d'origine (en veillant à ce que toutes les plaques, rondelles ou inserts en plastique, soient mis de côté pour une utilisation ultérieure) en le tirant doucement vers l'extérieur du support de plaque. Prenez note de la correspondance de chaque clignotant avec son côté.
- Les clignotants peuvent maintenant être assemblés sur leur point de fixation correspondant sur le support (article 1) de la même façon qu'ils ont précédemment été enlevés en utilisant les plaques internes (voir photo 12). Note, vous pouvez utiliser un peu de liquide vaisselle pour faciliter l'installation du caoutchouc sur le support de plaque.

R&G

Unit 1, Shelley's Lane, East Worldham, Alton, Hampshire, GU34 3AQ
Tel: +44 (0)1420 89007 Fax: +44 (0)1420 87301 www.rg-racing.com Email: info@rg-racing.com