



LP0339BK FITTING INSTRUCTION



This kit contains the items pictured and labelled over page.

Some parts may be shown for clarity of instructions only.

Do not proceed until you are sure all parts are present.

Please read all instructions before proceeding.

IF IN ANY DOUBT WHEN FITTING OUR PRODUCTS, CONSULT ONE OF OUR DEALERS OR HAVE FITTED BY A QUALIFIED TECHNICIAN.

Please note that the way the kit is packed does not necessarily represent the way of mounting to the bike.

In the event of rubber washers being used to hold components onto bolts, these rubber washers can be thrown away.

DIGITAL COPIES OF THESE INSTRUCTIONS ARE AVAILABLE FROM

WWW.RG-RACING.COM



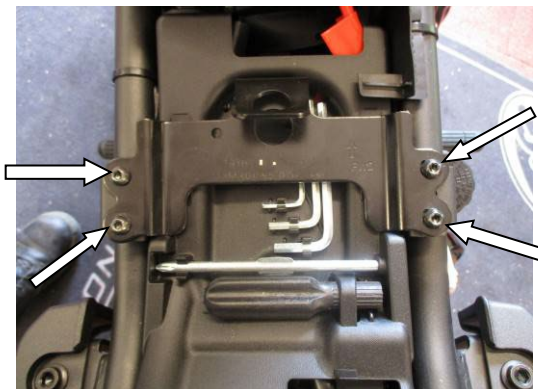
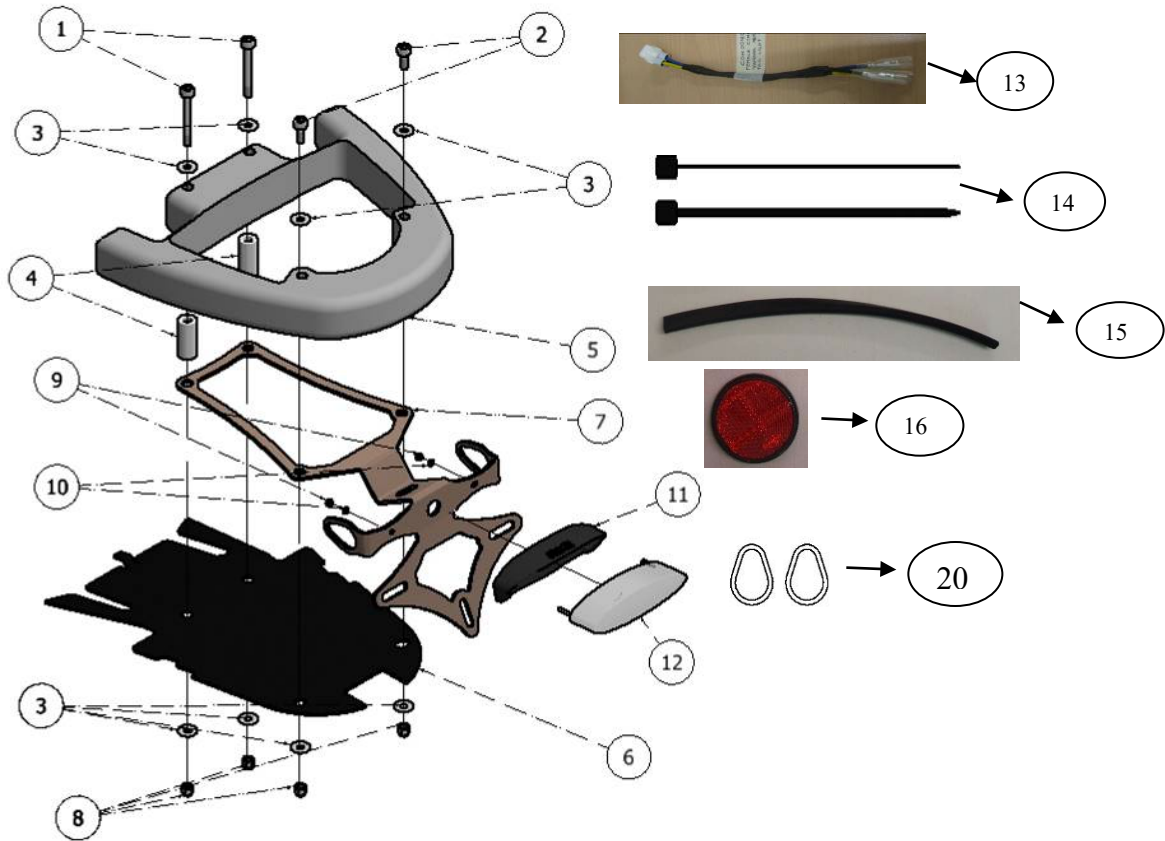
<u>TOOLS REQUIRED</u>	<u>GENERAL TORQUE SETTINGS</u>
<ul style="list-style-type: none"> • Set of metric Allen keys. • Phillip Screwdriver • Metric Socket set. • Electrical pliers/crimps 	M4 BOLT = 8Nm M5 BOLT = 12Nm M6 BOLT = 15Nm M8 BOLT = 20Nm M10 BOLT = 40Nm M12 BOLT = 40Nm

LEGEND

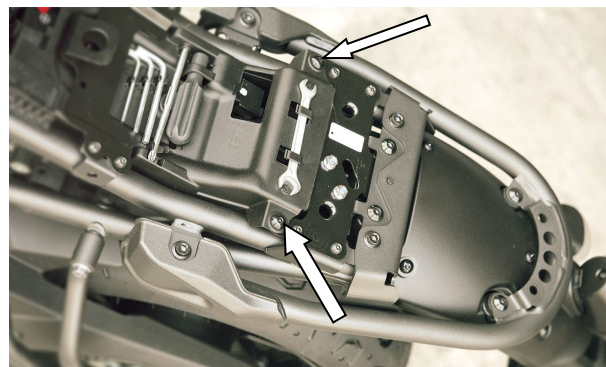
ITEM No.	DESCRIPTION	QTY
ITEM 1	M6 x 50mm BUTTON HEAD BOLTS	2
ITEM 2	M6 x 15mm BUTTON HEAD BOLTS	2
ITEM 3	M6 WASHERS (16mm O/DIA)	8
ITEM 4	SPACER 35mm Long (S0795)	2
ITEM 5	SUB-FRAME (FOR ILLUSTRATION ONLY)	N/A
ITEM 6	COVER PLATE (TB0193 Pt.1)	1
ITEM 7	LICENCE PLATE BRACKET ASSEMBLY (TB0193 Pt.2)	1
ITEM 8	M6 NYLOC NUTS	4
ITEM 9	M3 NUTS	2
ITEM 10	M3 WASHERS	2
ITEM 11	TAILLIGHT SHROUD (LA0003 Shroud)	1
ITEM 12	TAILLIGHT UNIT (LA0003)	1
ITEM 13	TAILLIGHT CONNECTOR (CON0040)	1
ITEM 14	75mm LONG CABLE TIES	2
ITEM 15	300mm LONG HEAT SHRINK	2
ITEM 16	REFLECTOR	1
ITEM 17	OEM INDICATOR ADAPTORS (I0037)	1



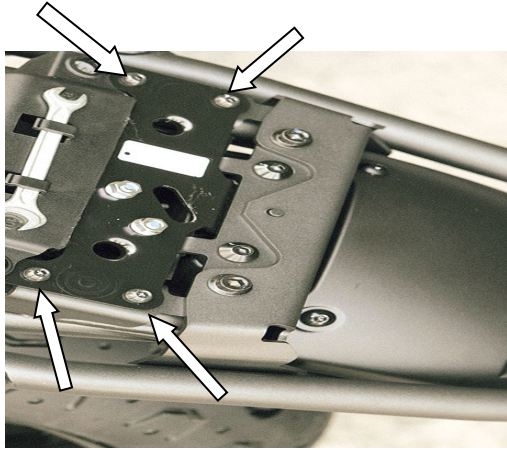
ASSEMBLY DIAGRAM



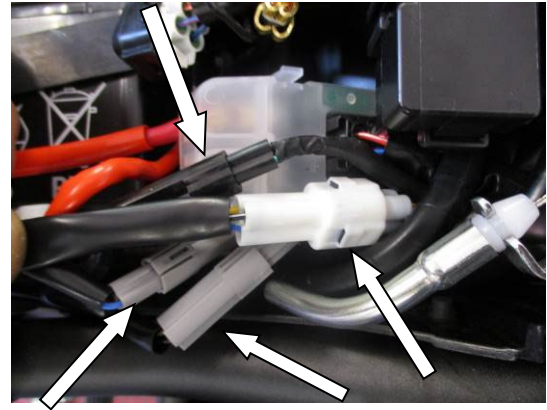
PICTURE 1



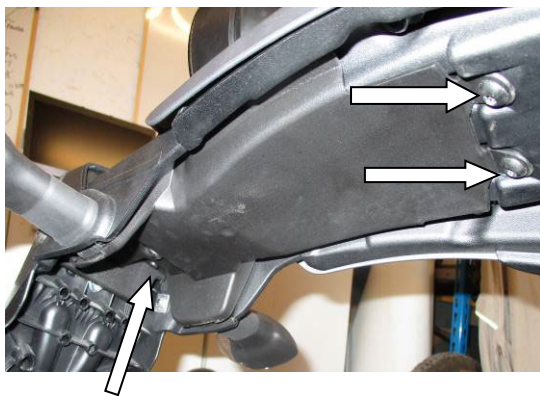
PICTURE 2



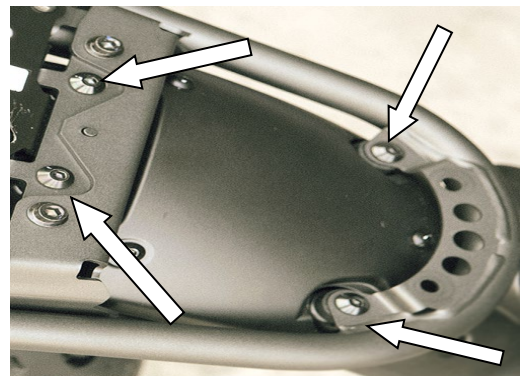
PICTURE 3



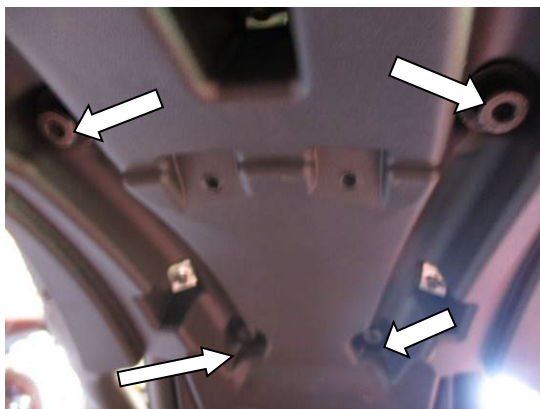
PICTURE 4



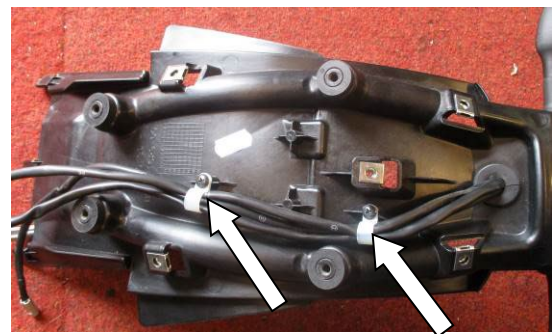
PICTURE 5



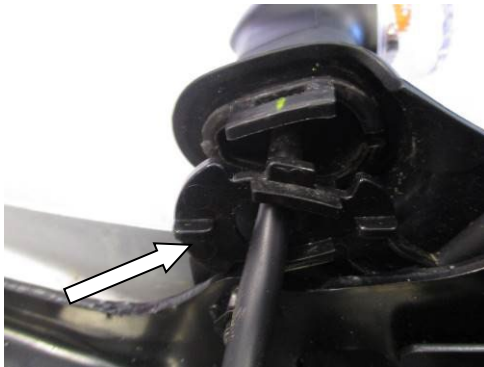
PICTURE 6



PICTURE 7



PICTURE 8



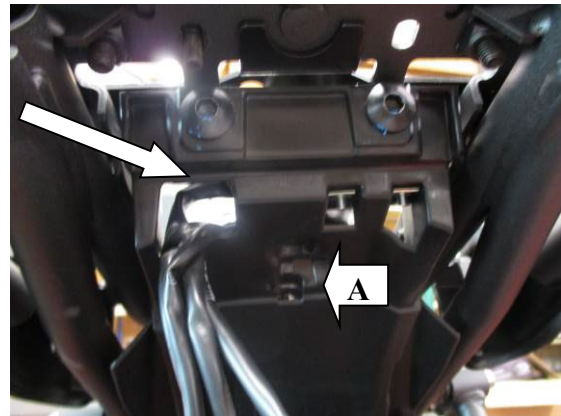
PICTURE 9



PICTURE 10



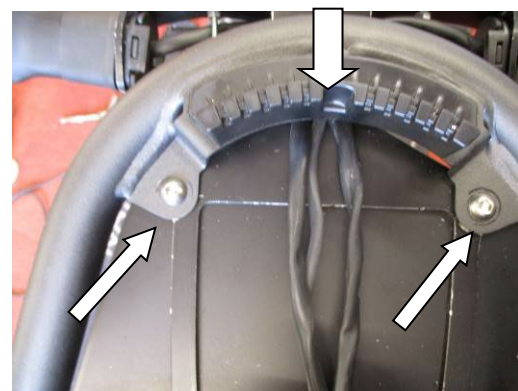
PICTURE 11



PICTURE 12



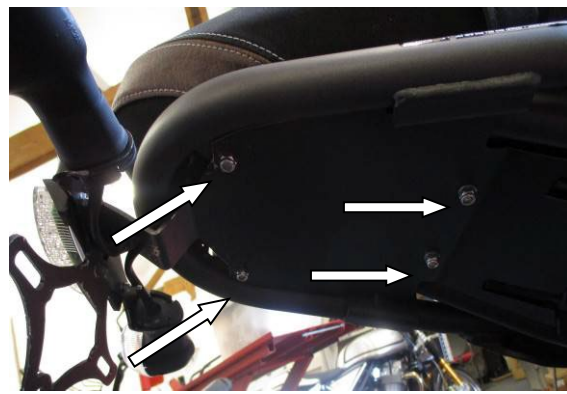
PICTURE 13



PICTURE 14



PICTURE 15



PICTURE 16

FITTING INSTRUCTIONS

- Remove the seat using the key.
- Remove the four bolts that hold the seat catch as arrowed in picture 1 using 4mm Allen key. Remove the seat catch.
- Remove the two bolts that hold the tool holder as arrowed in picture 2 using 4mm Allen key. Remove the tool holder tray.
- Remove the four bolts that hold the seat lock mechanism as arrowed in picture 3 using 4mm Allen key. Remove seat lock mechanism (It is not necessary to detach the cable and remove the seat lock mechanism completely)
- Disconnect the 4 electrical connectors (taillight, L/H indicator, R/H indicator and no. plate light connectors) as arrowed in picture 4. Please note the orientation of the connectors for re-fitting at later stage.
- Remove the 3 bolts that hold the undertray cover as arrowed in picture 5 using 5mm Allen key. Remove the undertray cover.
- Remove the four main bolts that hold the tail unit assembly as arrowed in picture 6 using 6mm Allen key. From below, using a 6mm Allen key hold still the four button head shape nuts while the four main bolts are being loosen, this is to stop the nuts from turning (Arrowed in picture 7). Please keep the tail unit assembly supported during removal as it may drop and cause damage to the wiring loom. Gently retract the whole tail unit assembly and the wiring loom away from the sub-frame/ bike.



- Remove the two nuts that hold the rear OEM taillight assembly (located on the bottom of the taillight unit) using 10mm socket and a ratchet. Remove the OEM taillight unit.
- Remove the 5 button head bolts that hold the rear mudguard (located on top of the mudguard) using 4mm Allen key. Remove the rear mudguard.
- Remove the two plastic clips that secure the wire bundle (shown in picture 8) using a suitable Phillip screwdriver.

Using the original indicators

- Remove the spreader/location plate arrowed in picture 9.
- Gently squeeze the indicator stem and remove the indicator with its wiring.
- Repeat the procedure for the other indicator.
- Fit the original indicator to the new licence plate bracket (item 7), fit the indicator adaptor (item 17) and re-fit the spreader to secure the indicator in place.
- Feed the indicator wires through the centre hole of the license plate bracket as shown in picture 10.

Fitting the Taillight

- From the kit, take the Taillight unit (Item 12) and its shroud (Item 11). Insert the taillight into the shroud by aligning the two studs at the back of the taillight into the two holes provided on the shroud. Mount the whole assembly into the licence plate bracket (Item 7) and secure with M3 washers (Item 10) and M3 Nuts (Item 9). Tighten the M3 nuts (Item 9)
- Feed the wire through the centre hole on the Licence Plate bracket (Item 7) together with the L/H and R/H Indicator wires (Picture 10).
- Cut the Heat-shrink tube (Item 15) into a suitable length and feed the three wires through, using a suitable heating resources, shrink the heat-shrink tube.
- Bring the whole assembly towards the rear sub-frame of the bike (coming from below as illustrated on the first page of this manual). Feed all the wires through the initial hole on the left-hand side of the OEM undertray (arrowed in Picture 12). Support the assembly onto the sub-frame at this stage and be aware of trapped wires. Please make sure that there is enough slack within the wires as they can get damaged under tension.
- Mount the base cover plate (Item 6) below the licence plate bracket assembly (Item 7) with its catch inserted into the centre hole located



on the OEM undertray unit (Labelled A in picture 12 and arrowed in picture 13)

- Insert the two M6 x 15mm bolts (Item 2) with M6 washers (Item 3) through the two holes located on the back of the subframe (Arrowed in picture 13). Secure the assembly with M6 washer (Item 3) and M6 nyloc nut (Item 8) on each bolt. Do not fully tighten the nuts at this stage. Please make sure that the wiring is positioned in the same orientation as shown in picture 14.
- Insert the two Spacers (Item 4) between the sub-frame and the licence plate bracket assembly as orientated in picture 16. Insert an M6 x 50mm bolt (Item 1) with M6 washer (Item 3) through the hole where the spacer is aligned to on the sub-frame. Ensure the bolt is gone through the spacer and the spacer is sandwiched between the sub-frame and the licence plate bracket (item 7). Secure the assembly with M6 washer (Item 3) and M6 nyloc nut (Item 8). Repeat the procedure for the other M6 x 50mm bolt (Item 1).
- Locate the wiring in the centre between the two spacers as shown in picture 15.
- Tighten the four nyloc nuts using suitable tools to ± 15 Nm (Picture 16)
- Reconnect all the indicator wiring plug sockets and check operation.
- Connect the male connector of the taillight connector (Item 13) into the OEM female connector in the main wiring loom.
- OEM number plate connector light is no longer in use as the taillight unit (Item 12) comes with built-in LED license plate lights.
- Fit licence plate to the new licence plate bracket (item 7) (it may require re-drilling).
- **IMPORTANT: IF FITTING A FULL-SIZE LICENCE PLATE AND PLACING IT FAR DOWN ON THE LICENCE PLATE HANGER, THERE IS A SMALL CHANCE OF THE LICENCE PLATE HITTING THE BACK WHEEL UNDER HEAVY LOAD AND OVER LARGE BUMPS IN THE ROAD. IT IS YOUR RESPONSIBILITY TO CHECK FOR THIS POSSIBILITY AND TAKE AVOIDING ACTION. FAILURE TO CHECK THIS COULD RESULT IN SERIOUS INJURY.**
- Refit the Seat lock mechanism, tool holder and seat catch as original.
- Refit seat.
- Depending on local laws, attach enclosed red reflector (item 18) in an appropriate location.

Please test the indicators, rear light, no. plate light and brake light before riding.