



FITTING INSTRUCTIONS FOR LP0367 LICENSE PLATE BRACKET



**This kit contains the items pictured and labelled over page.
Some parts may be shown for clarity of instructions only.
Do not proceed until you are sure all parts are present.
Please read all instructions before proceeding.**

**IF IN ANY DOUBT WHEN FITTING OUR PRODUCTS, CONSULT ONE OF OUR DEALERS
OR HAVE FITTED BY A QUALIFIED TECHNICIAN.**

Please note that the way the kit is packed does not necessarily represent the way of mounting to the bike.

In the event of rubber washers being used to hold components onto bolts, these rubber washers can be thrown away.

DIGITAL COPIES OF THESE INSTRUCTIONS ARE AVAILABLE FROM

WWW.RG-RACING.COM

R&G

Unit 1, Shelley's Lane, East Worldham, Alton, Hampshire, GU34 3AQ
Tel: +44 (0)1420 89007 Fax: +44 (0)1420 87301 www.rg-racing.com Email: info@rg-racing.com

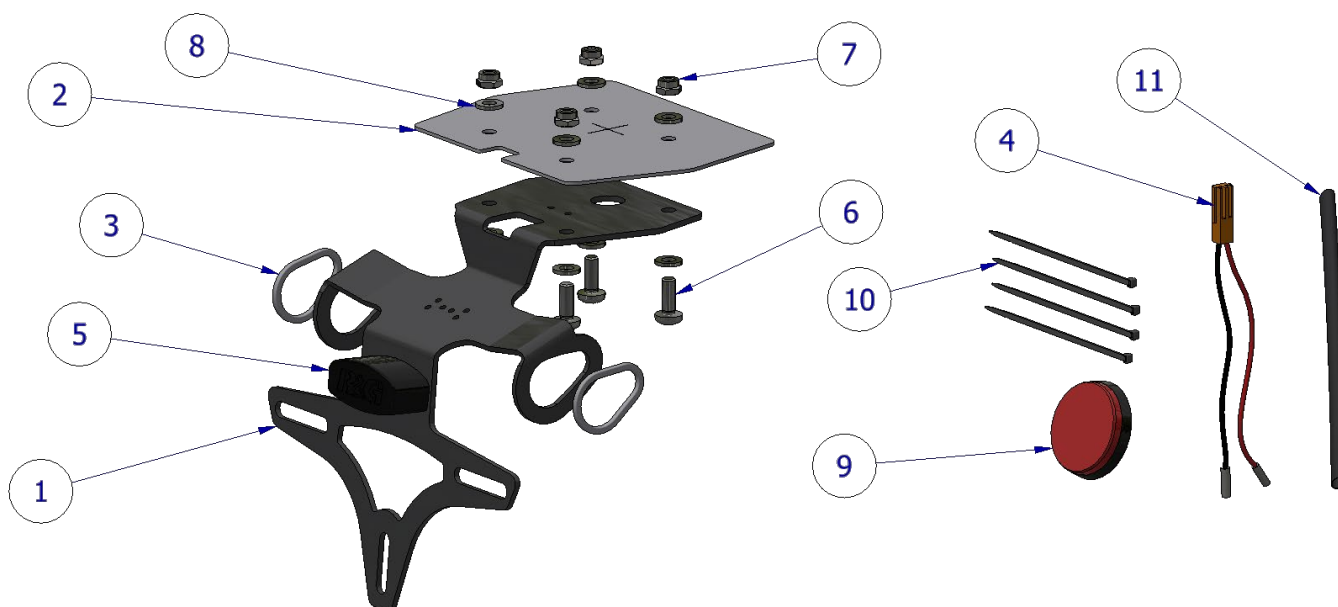
**TOOLS REQUIRED**

- Set of metric Allen keys to include 4 & 5mm A/F sizes.
- Socket set to include 8, socket.
 - 13mm Spanner.
- Small flathead screwdriver.
- Small amount of adhesive.

GENERAL TORQUE SETTINGS

M4 BOLT = 8Nm
 M5 BOLT = 12Nm
 M6 BOLT = 15Nm
 M8 BOLT = 20Nm
 M10 BOLT = 40Nm
 M12 BOLT = 40Nm

ITEM No.	DESCRIPTION	QTY
ITEM 1	LICENSE PLATE BRACKET (TB0367)	1
ITEM 2	RUBBER GASKET (RG0035)	1
ITEM 3	INDICATOR ADAPTORS (I0037)	2
ITEM 4	NUMBER PLATE LIGHT CONNECTOR (CON0007)	1
ITEM 5	NUMBER PLATE LIGHT (LA0002)	1
ITEM 6	M6 x 16mm BOLTS	4
ITEM 7	M6 NUTS	4
ITEM 8	M6 WASHERS	8
ITEM 9	REFLECTOR (REFL1)	1
ITEM 10	CABLE TIES (CT100)	4
ITEM 11	150mm LENGTH OF HEAT SHRINK	1

ASSEMBLY DIAGRAM

R&G

Unit 1, Shelley's Lane, East Worldham, Alton, Hampshire, GU34 3AQ

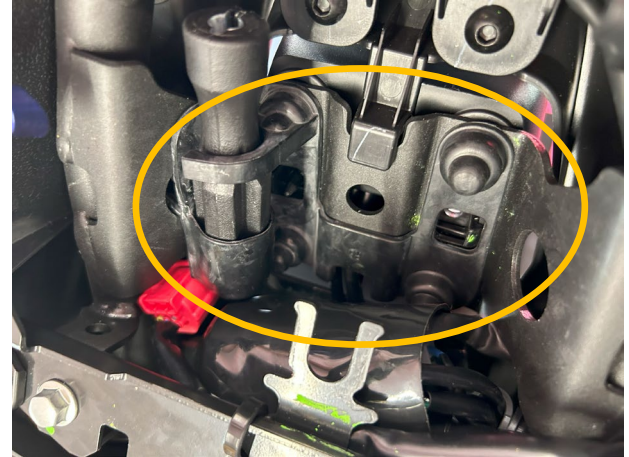
Tel: +44 (0)1420 89007 Fax: +44 (0)1420 87301 www.rg-racing.com Email: info@rg-racing.com



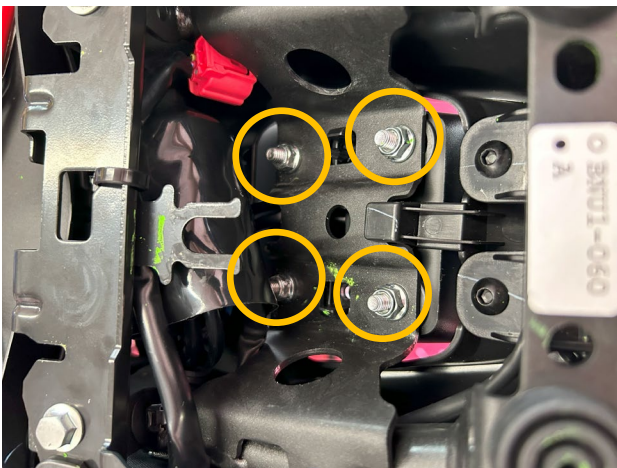
FITTING INSTRUCTIONS



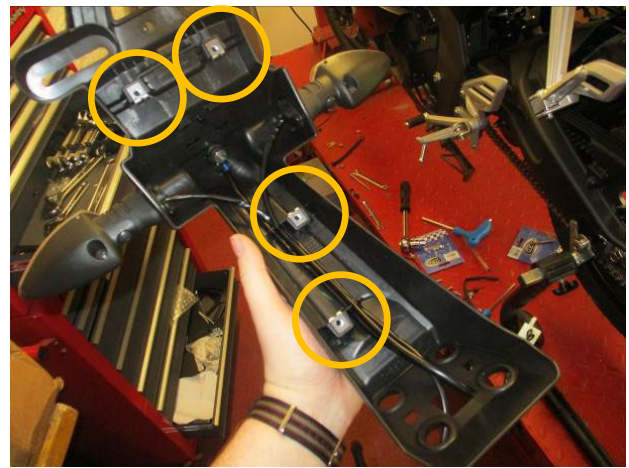
Picture 1



Picture 2



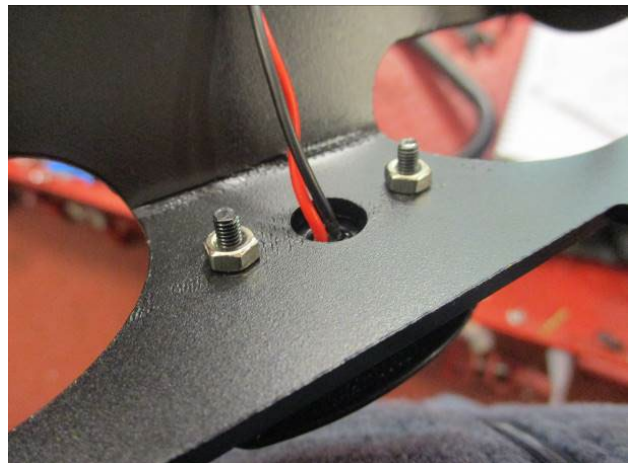
Picture 3



Picture 4



Picture 5



Picture 6

R&G

Unit 1, Shelley's Lane, East Worldham, Alton, Hampshire, GU34 3AQ

Tel: +44 (0)1420 89007 Fax: +44 (0)1420 87301 www.rg-racing.com Email: info@rg-racing.com



Picture 7

FITTING INSTRUCTIONS

- To fit the R&G tail tidy, remove the pillion seat with the key.
- Remove the relay from the carrier by gently sliding towards the rear of the bike, as shown in **Picture 1**.
- Remove the rubber cover as shown in **Picture 2**.
- Open the wiring shroud and disconnect the 3 connections shown in picture 12 and detailed below:

WHITE/CLEAR 2-PIN CONNECTOR	=	NUMBER PLATE ILLUMINATOR
BLACK 3-PIN CONNECTOR	=	LEFT-HAND SIDE INDICATOR
GREY 3-PIN CONNECTOR	=	RIGHT-HAND SIDE INDICATOR

- Using a 10mm socket, remove the 4x nuts securing the OEM tail tidy, as shown in **Picture 3**, and carefully lower the OEM tail tidy while feeding the wiring through the hole in the subframe.
- Remove the two bolts on the underside and the two bolts at the rear of the OEM tail tidy to remove the plastic cover, exposing the wires, as shown in **Picture 4**.
- Remove the indicator spreading plates by unclipping from either side of the indicator rubber seal and gently squeeze the indicator stems to remove the indicators.
- Fit the original indicators to the new licence plate bracket (**item 1**) using the indicator adaptors (**item 3**) in position shown in **Picture 5** so it fits in the groove in the stem and between the indicator and the bracket.
- Fit the R&G license plate illuminator (**item 5**) to the assembly, as shown in **Picture 6**. Use a small amount of superglue to stick the light shroud in position. Fit the heatshrink (**item 11**) to the wires and tighten the nuts on the rear.
- Feed all wiring through the access hole on the tail tidy and secure wiring to bracket using the provided cable ties (**item 10**) fed through corresponding holes in the bracket, as shown in **Picture 7**.
- Offer up the new rubber grommet (**item 2**) to the underside of the tail tidy mounting location, aligning the 4 holes in the gromet with the 4 mounting holes and squeeze the edges of the

R&G

Unit 1, Shelley's Lane, East Worldham, Alton, Hampshire, GU34 3AQ

Tel: +44 (0)1420 89007 Fax: +44 (0)1420 87301 www.rg-racing.com Email: info@rg-racing.com



gasket between the metal of the subframe and the plastic undertray in order to fill the gap, (as shown in **Picture 7**).

- Feed the indicator and number plate illuminator wiring through the cut-out on the rubber gromet, then position one M6 x 15mm long button head bolt (**item 6**) with one M6 washer fitted (**item 8**) through each of the 4 holes on the mounting plate of the tail tidy.
- This can now be positioned in the opening on the underside of the tail, before locating each of the 4 bolts with the corresponding holes on the rubber grommet and mounting holes on the subframe.
- Fit a washer (**item 8**) and loosely fitting one of the provided nyloc nuts (**item 7**) to the exposed end of each bolt.
- Ensure the tail tidy is located correctly before tightening the 4 bolts, using a 10mm socket or spanner to hold the nut from above whilst tightening with a 4mm Allen key from the underside.
- To connect the OEM indicators, simply re-fit the matching connectors together.
- To connect the license plate illuminator, fit the wiring connector (**item 4**) to the corresponding bullet connectors of the illuminator (BLACK – BLACK, RED – RED) and re-fit to the corresponding female 2-pin connector within the shroud opened earlier.
- Ensure the tail tidy is securely mounted and all bolts are fully tightened.
- Re-fit the rubber cover, relay & pillion seat.
- Re-fit the licence plate (it may require drilling). Depending on local laws, attach enclosed reflector in an appropriate location. Test the license plate illuminator and all lights before riding.
- **IMPORTANT: IF FITTING A FULL-SIZE LICENCE PLATE AND PLACING IT FAR DOWN ON THE LICENCE PLATE HANGER, THERE IS A SMALL CHANCE OF THE LICENCE PLATE HITTING THE BACK WHEEL UNDER HEAVY LOAD AND OVER LARGE BUMPS IN THE ROAD. IT IS YOUR RESPONSIBILITY TO CHECK FOR THIS POSSIBILITY AND TAKE AVOIDING ACTION. FAILURE TO CHECK THIS COULD RESULT IN SERIOUS INJURY.**

ISSUE 1 08/09/2023 (MH)

CONSUMER NOTICE

The catalogue description and any exhibition of samples are only broad indications of the Products and R&G may make design changes which do not diminish their performance or visual appeal and supplying them in such state shall conform to the order. The Buyer acknowledges no representation or warranty (other than as to title) has been given or will apply to the Products other than those in R&G's order or confirmation and the Buyer confirms it has chosen the Products as being of merchantable quality and suitable for its particular purposes. Where R&G fits the Products or undertakes other services it shall exercise reasonable skill and care and rectify any fault free of charge unless the workmanship has been disturbed. The Buyer is responsible for ensuring that the warranty on the motorcycle is not affected by the fitting of the Products. On return of any defective Products R&G shall at its option either supply a replacement or refund the purchase money but shall not be liable if the Products have been modified or used or maintained otherwise than in accordance with R&G's or manufacturer's instructions and good engineering practice or if the defect arises from accident or neglect. Other than identified above and subject to R&G not limiting its liability for causing death and personal injury, it shall not be liable for indirect or consequential loss and otherwise its liability shall be limited to the amounts paid by the Buyer for the Products or the fitting or service concerned. These terms do not affect the Buyer's statutory rights.

R&G RACING RETURNS POLICY (NON-FAULTY GOODS)

Returns must be pre-authorized (if not pre-authorized the return will be rejected). Goods may only be returned direct to us if they were purchased direct from us (customer must prove if necessary). Otherwise to be returned to original vendor. Goods must be in re-sellable condition, in the opinion of R&G Racing. All returns are subject to a 25% restocking and handling fee (25% of the gross value exc. P&P – at the prevailing price at time of purchase). The customer must pay any and all carriage charges. No returns of discontinued products, unless within 14 days of purchase. This policy does not affect your statutory rights and does not refer to faulty goods.

MONTAGEANLEITUNG FÜR LP0367 KENNZEICHENHALTER

R&G

Unit 1, Shelley's Lane, East Worldham, Alton, Hampshire, GU34 3AQ

Tel: +44 (0)1420 89007 Fax: +44 (0)1420 87301 www.rg-racing.com Email: info@rg-racing.com