



**FITTING INSTRUCTIONS FOR LP0371 LICENCE PLATE BRACKET**



**THIS KIT CONTAINS THE ITEMS PICTURED AND LABELLED OVER PAGE.**

SOME PARTS MAY BE SHOWN FOR CLARITY OF INSTRUCTIONS ONLY.

DO NOT PROCEED UNTIL YOU ARE SURE ALL PARTS ARE PRESENT.

**PLEASE READ ALL INSTRUCTIONS BEFORE PROCEEDING.**

**IF IN ANY DOUBT WHEN FITTING OUR PRODUCTS, CONSULT ONE OF OUR DEALERS OR HAVE FITTED BY A QUALIFIED TECHNICIAN.**

PLEASE NOTE THAT THE WAY THE KIT IS PACKED DOES NOT NECESSARILY REPRESENT THE WAY OF MOUNTING TO THE BIKE.

IN THE EVENT OF RUBBER WASHERS BEING USED TO HOLD COMPONENTS ONTO BOLTS, THESE RUBBER WASHERS CAN BE THROWN AWAY.

**DIGITAL COPIES OF THESE INSTRUCTIONS ARE AVAILABLE FROM:**

[WWW.RG-RACING.COM](http://WWW.RG-RACING.COM)

R&G

Unit 1, Shelley's Lane, East Worldham, Alton, Hampshire, GU34 3AQ  
Tel: +44 (0)1420 89007 Fax: +44 (0)1420 87301 [www.rg-racing.com](http://www.rg-racing.com) Email: [info@rg-racing.com](mailto:info@rg-racing.com)

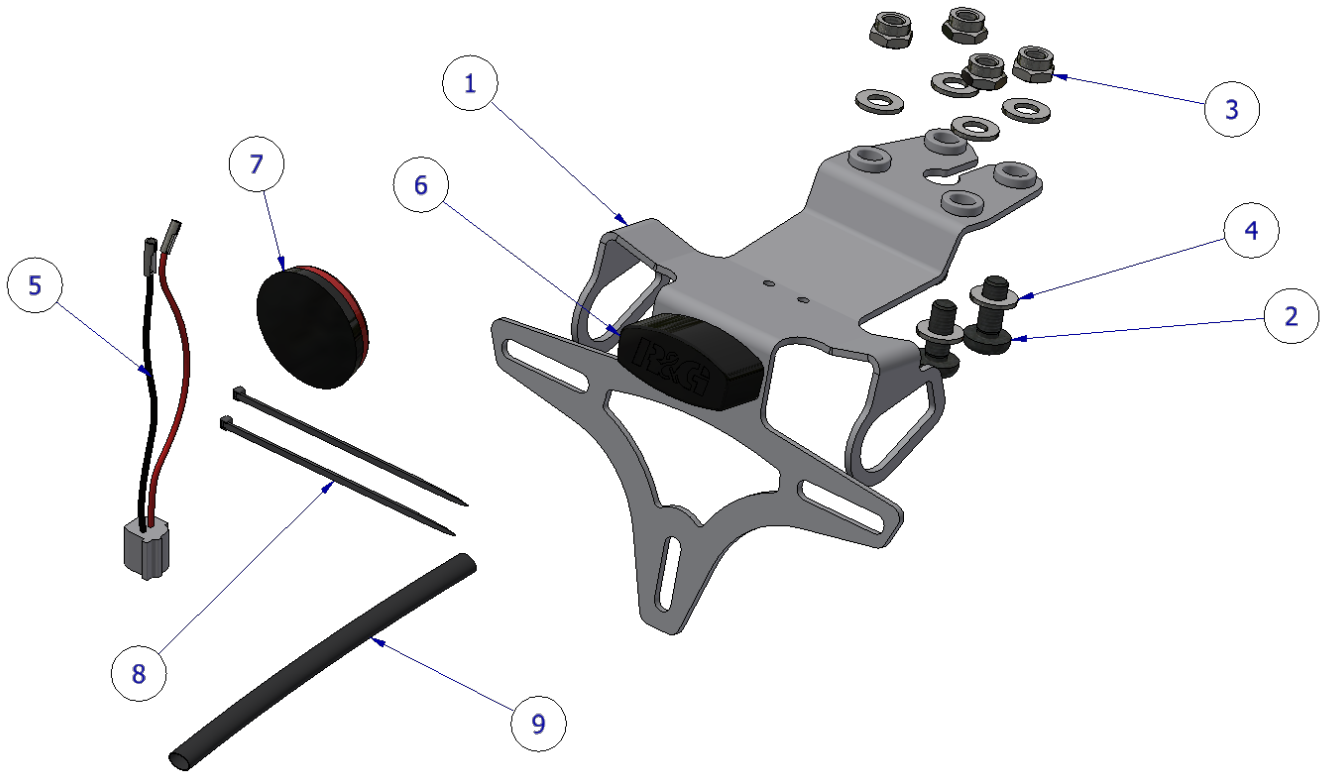


<b><u>TOOLS REQUIRED</u></b>	<b><u>GENERAL TORQUE SETTINGS</u></b>
<ul style="list-style-type: none"> <li>•set of metric Allen keys to include 5mm A/F size.</li> <li>•10mm spanner or socket and wrench.               <ul style="list-style-type: none"> <li>•Phillips screwdriver.</li> <li>•Cable cutters.</li> </ul> </li> <li>•Small amount of adhesive.</li> </ul>	M4 BOLT = 8Nm M5 BOLT = 12Nm M6 BOLT = 15Nm M8 BOLT = 20Nm M10 BOLT = 40Nm M12 BOLT = 40Nm

<b>ITEM NO.</b>	<b>DESCRIPTION</b>	<b>QTY</b>
ITEM 1	LICENCE PLATE BRACKET (TB0296)	1
ITEM 2	M8 x 20mm LONG BUTTON HEAD BOLTS	4
ITEM 3	NYLOC NUTS	4
ITEM 4	WASHERS	8
ITEM 5	LICENCE PLATE ILLUMINATOR CONNECTOR (CON0051)	1
ITEM 6	LA0002 LICENCE PLATE ILLUMINATOR ASSEMBLY	1
ITEM 7	REFLECTOR (REFL 3)	1
ITEM 8	2.5mm CABLE TIES	2
ITEM 9	180mm LENGTH OF HEATSHRINK	1



**ASSEMBLY DIAGRAM**



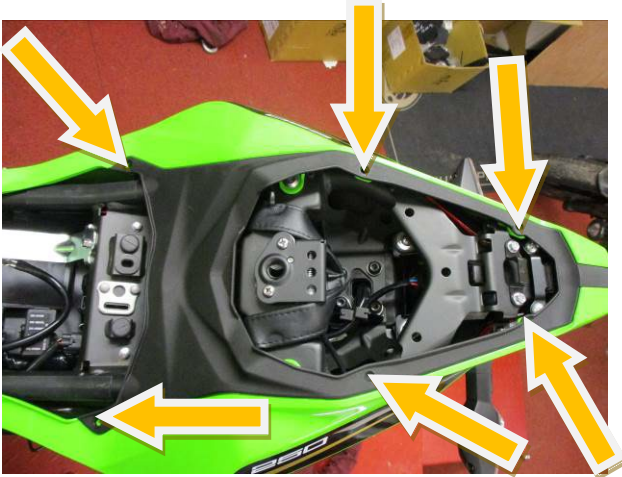
**FITTING PICTURES**



PICTURE 1



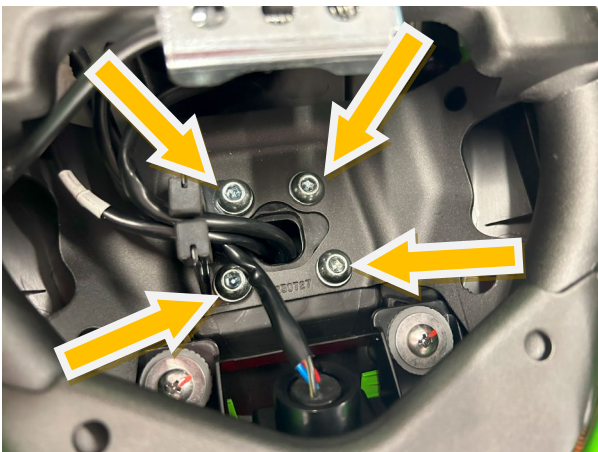
PICTURE 2



PICTURE 3



PICTURE 4



PICTURE 5



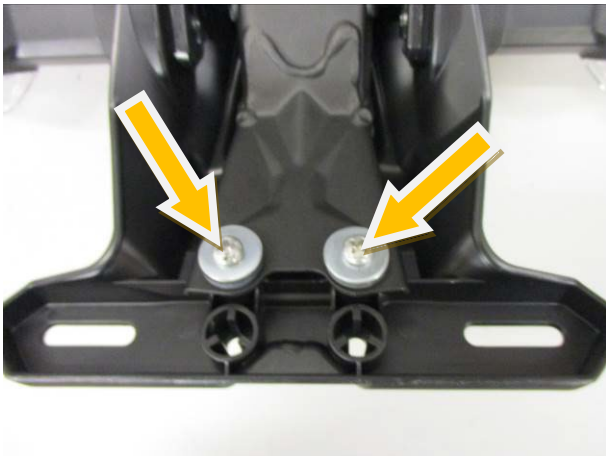
PICTURE 6



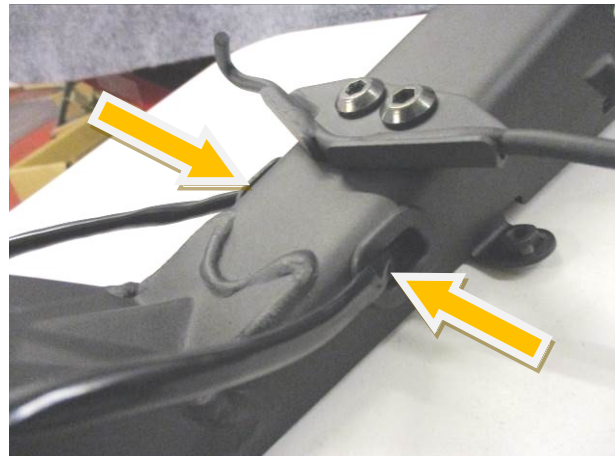
PICTURE 7



PICTURE 8



PICTURE 9



PICTURE 10



PICTURE 11



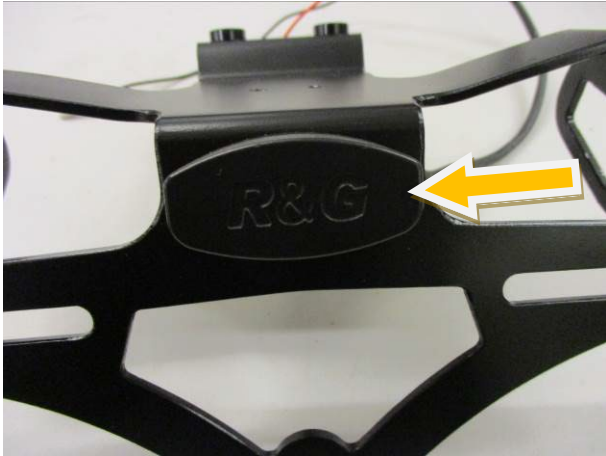
PICTURE 12



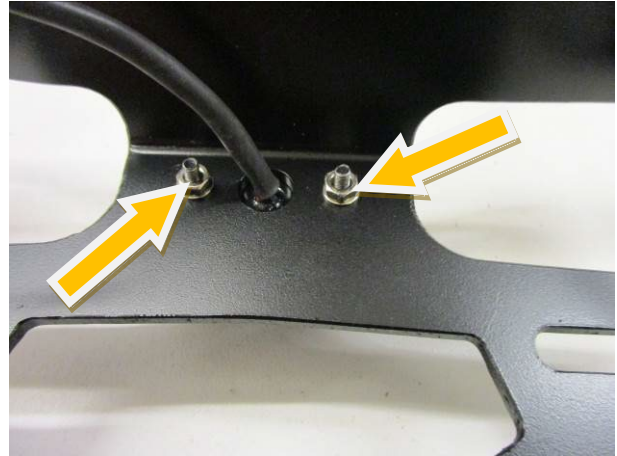
PICTURE 13



PICTURE 14



PICTURE 15



PICTURE 16



PICTURE 17



PICTURE 18



PICTURE 19



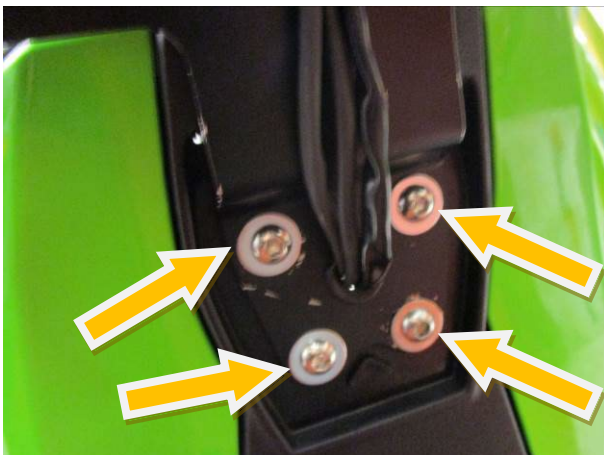
PICTURE 20



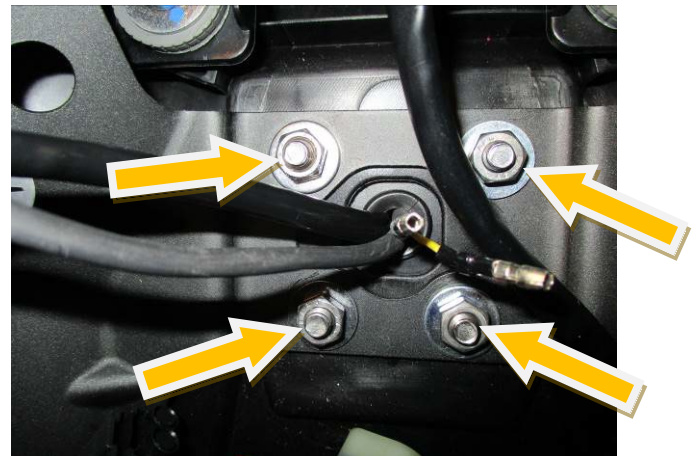
PICTURE 21



PICTURE 22



PICTURE 23



PICTURE 24



PICTURE 25



## **FITTING INSTRUCTIONS**

- To fit the R&G tail tidy, first remove the pillion seat using the key as shown in **picture 1**.
- Pull the rider's seat catch as shown in **picture 2** and remove the rider seat.
- Remove the six push rivets arrowed in **picture 3** and remove the seat surround.
- Disconnect the three wiring plug sockets for the licence plate illuminator and indicators located under the seat catch arrowed in **picture 4**.
- Remove the four bolts arrowed in **picture 5** while supporting the original licence plate bracket.
- Carefully lower the original licence plate bracket while feeding the wiring through the hole in the under-tray as shown in **picture 6** and remove.
- Remove the two bolts arrowed in **picture 7**, this will allow the cover to be removed as shown in **picture 8**.
- Remove the cable tie holding the wiring in place and remove the wiring from the cable clip/guide.
- Remove the two screws arrowed in **picture 9** and remove the metal support bracket while feeding the indicator wires through the wiring grommets as shown in **picture 10**.
- Remove the indicator clamp screw arrowed in **picture 11**.
- Remove the indicator clamp as shown in **picture 12**.
- Remove the indicator spreader plate as shown in **picture 13**.
- Gently squeeze the indicator stem and remove the indicator as shown in **picture 14**.
- Repeat the above steps to remove the opposite indicator.
- Fit the indicators into the new licence plate bracket (**Item 1**) and secure as shown in **pictures 17 - 20**.
- Feed the wires of the new R&G licence plate illuminator (**Item 6**) through the central hole in the new licence plate bracket (**Item 1**) as shown in **picture 15**.
- Secure using the washers and nut supplied as shown in **picture 16**.
- Fit one length of heat-shrink (**Item 9**) to the wires and heat gently to shrink to fit.
- Fit the light shroud and use a small amount of adhesive to hold it in position as shown in **picture 15**.
- Feed all the wiring through the slot in the bracket and secure in place using one of the cable ties (**Item 8**) as shown in **picture 21**.
- Offer the new licence plate bracket into position on the under-tray while feeding the wiring through the slot in the under-tray as shown in **picture 22** and secure using the four bolts with washers (**Items 2 and 4**) and the four nuts with washers (**Items 3 and 4**) as shown in **pictures 23 and 24**, please ensure the wires are not crushed.
- Route the wiring as original and reconnect the licence plate illuminator using the supplied connector (**Item 5**) and indicators to the original plug sockets as shown in **picture 25** (if illumination fails please swap the bullet connectors over).
- Refit and secure the seat surround as original.
- Refit the rider and pillion seats as original.
- Refit the licence plate (it may require drilling).





- **IMPORTANT: IF FITTING A FULL-SIZE LICENCE PLATE AND PLACING IT FAR DOWN ON THE LICENCE PLATE HANGER, THERE IS A SMALL CHANCE OF THE LICENCE PLATE HITTING THE BACK WHEEL UNDER HEAVY LOAD AND OVER LARGE BUMPS IN THE ROAD. IT IS YOUR RESPONSIBILITY TO CHECK FOR THIS POSSIBILITY AND TAKE AVOIDING ACTION. FAILURE TO CHECK THIS COULD RESULT IN SERIOUS INJURY.**
- Depending on local laws, attach enclosed reflector (**Item 7**) in an appropriate location.
- Test the licence plate illuminator and all lights before riding.

ISSUE 1 - 03/11/2023 (MH)

#### **CONSUMER NOTICE**

The catalogue description and any exhibition of samples are only broad indications of the Products and R&G may make design changes which do not diminish their performance or visual appeal and supplying them in such state shall conform to the order. The Buyer acknowledges no representation or warranty (other than as to title) has been given or will apply to the Products other than those in R&G's order or confirmation and the Buyer confirms it has chosen the Products as being of merchantable quality and suitable for its particular purposes. Where R&G fits the Products or undertakes other services it shall exercise reasonable skill and care and rectify any fault free of charge unless the workmanship has been disturbed. The Buyer is responsible for ensuring that the warranty on the motorcycle is not affected by the fitting of the Products. On return of any defective Products R&G shall at its option either supply a replacement or refund the purchase money but shall not be liable if the Products have been modified or used or maintained otherwise than in accordance with R&G's or manufacturer's instructions and good engineering practice or if the defect arises from accident or neglect. Other than identified above and subject to R&G not limiting its liability for causing death and personal injury, it shall not be liable for indirect or consequential loss and otherwise its liability shall be limited to the amounts paid by the Buyer for the Products or the fitting or service concerned. These terms do not affect the Buyer's statutory rights.

#### **R&G RETURNS POLICY (NON-FAULTY GOODS)**

Returns must be pre-authorized (if not pre-authorized the return will be rejected). Goods may only be returned direct to us if they were purchased direct from us (customer must prove if necessary). Otherwise to be returned to original vendor. Goods must be in re-sellable condition, in the opinion of R&G. All returns are subject to a 25% restocking and handling fee (25% of the gross value exc. P&P – at the prevailing price at time of purchase). The customer must pay any and all carriage charges. No returns of discontinued products, unless within 14 days of purchase. This policy does not affect your statutory rights and does not refer to faulty goods.

R&G

Unit 1, Shelley's Lane, East Worldham, Alton, Hampshire, GU34 3AQ  
Tel: +44 (0)1420 89007 Fax: +44 (0)1420 87301 [www.rg-racing.com](http://www.rg-racing.com) Email: [info@rg-racing.com](mailto:info@rg-racing.com)