



FITTING INSTRUCTIONS FOR LP0400BK LICENCE PLATE BRACKET



THIS KIT CONTAINS THE ITEMS PICTURED AND LABELLED OVER PAGE.

SOME PARTS MAY BE SHOWN FOR CLARITY OF INSTRUCTIONS ONLY.

DO NOT PROCEED UNTIL YOU ARE SURE ALL PARTS ARE PRESENT.

PLEASE READ ALL INSTRUCTIONS BEFORE PROCEEDING.

**IF IN ANY DOUBT WHEN FITTING OUR PRODUCTS, CONSULT ONE OF OUR DEALERS OR
HAVE FITTED BY A QUALIFIED TECHNICIAN.**

PLEASE NOTE THAT THE WAY THE KIT IS PACKED DOES NOT NECESSARILY REPRESENT THE WAY OF
MOUNTING TO THE BIKE.

IN THE EVENT OF RUBBER WASHERS BEING USED TO HOLD COMPONENTS ONTO BOLTS,
THESE RUBBER WASHERS CAN BE THROWN AWAY.

<u>TOOLS REQUIRED</u>	<u>GENERAL TORQUE SETTINGS</u>
<ul style="list-style-type: none"> Heat gun or lighter Hex key set to include 4, 5 & 6mm a/f sizes. Small flat head screwdriver Socket set to include 10mm socket and wrench. 	M4 BOLT = 8Nm M5 BOLT = 12Nm M6 BOLT = 15Nm M8 BOLT = 20Nm M10 BOLT = 40Nm M12 BOLT = 40Nm

LEGEND

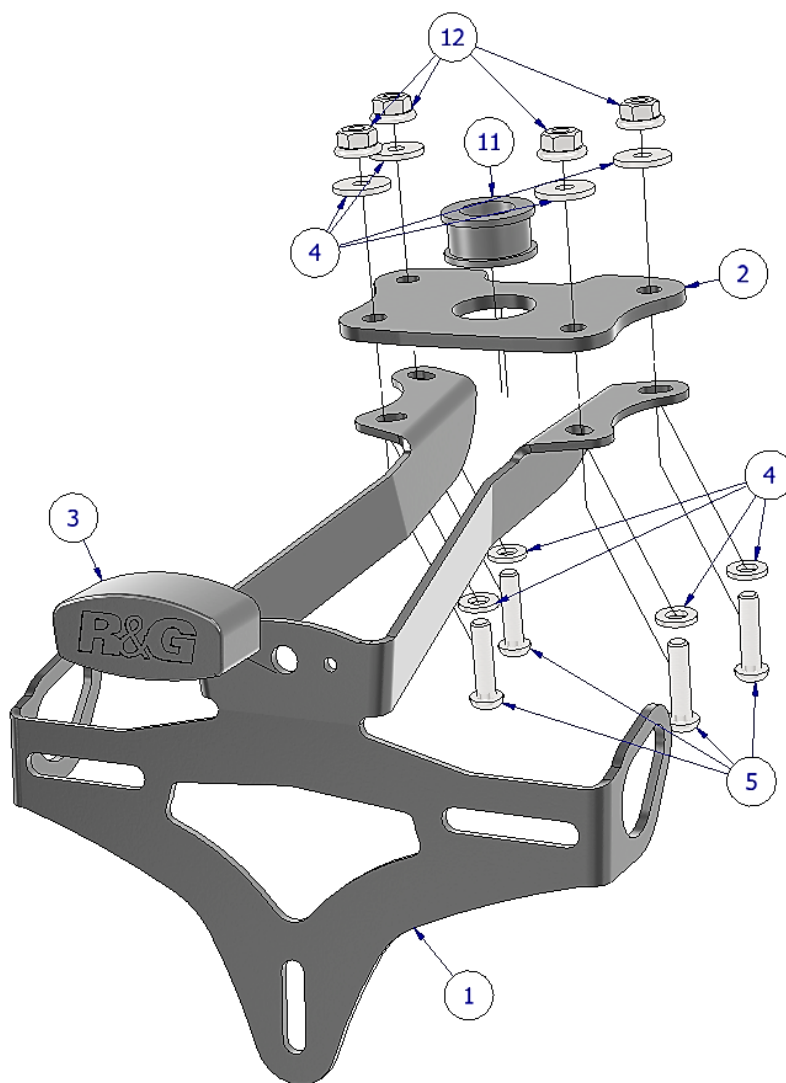
ITEM NO.	DESCRIPTION	QTY
ITEM 1	TB0326 PART 1 – MAIN BRACKET	1
ITEM 2	TB0400 - SPACER PLATE	1
ITEM 3	LA0002 - NUMBER PLATE LIGHT (W/SHROUD)	1
ITEM 4	M6x12mmØ – STAINLESS WASHERS	8
ITEM 5	M6x1.00x25mm - STAINLESS BUTTON HEAD BOLTS	4
ITEM 6	CON0027 – NUMBER PLATE LIGHT CONNECTOR	1
ITEM 7	CON0028 – ALT NUMBER PLATE LIGHT CONNECTOR	1
ITEM 8	CT100BK – 100mm CABLE TIES	3
ITEM 9	666-896 – 150mm LENGTH OF HEAT SHRINK	3
ITEM 10	REFL 3 - REFLECTOR	1
ITEM 11	RB0002 – RUBBER BUNG	1
ITEM 12	M6x1.00 – NYLOC NUTS	4
ITEM 13	I0037 - OEM INDICATOR ADAPTERS	2

Racing Technique Ltd T/A R&G

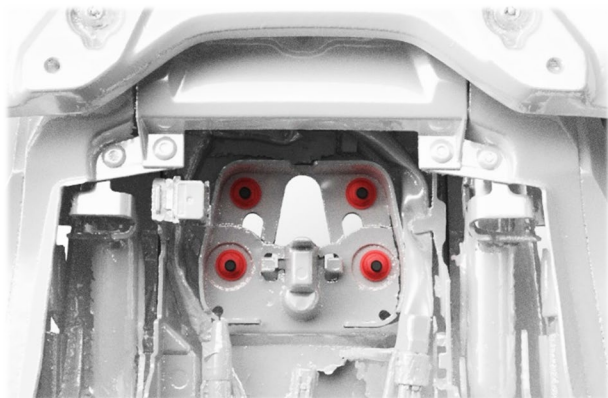
Unit 1, Shelley's Lane, East Worldham, Alton, Hampshire, GU34 3AQ

Tel: +44 (0)1420 89007 Fax: +44 (0)1420 87301 www.rg-racing.com Email: info@rg-racing.com

Assembly Diagram



FITTING PICTURES



PICTURE 1



PICTURE 2



PICTURE 3



PICTURE 4



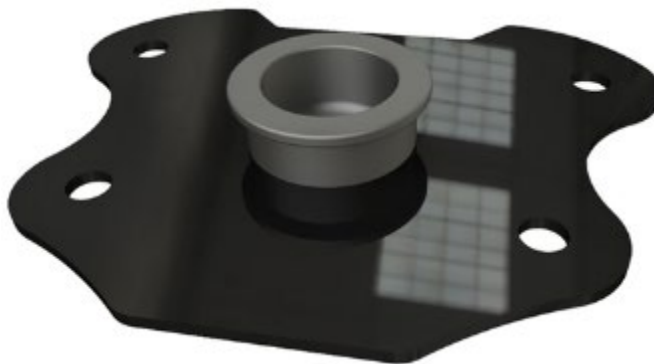
PICTURE 5



PICTURE 6



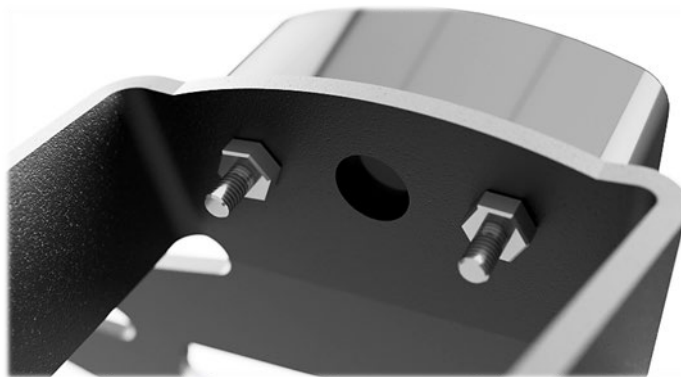
PICTURE 7



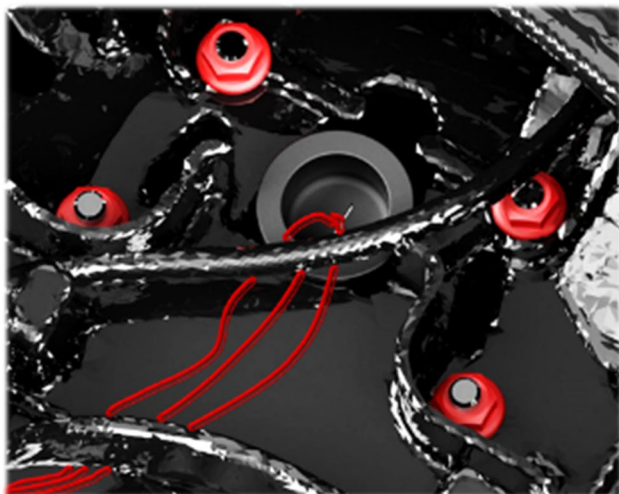
PICTURE 8



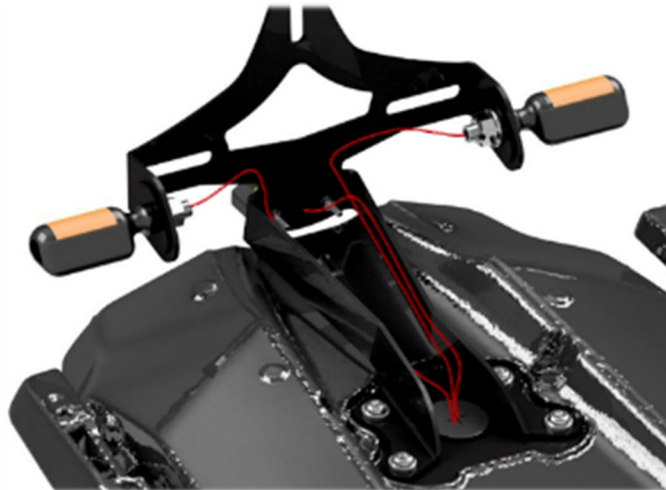
PICTURE 9



PICTURE 10



PICTURE 11



PICTURE 12

FITTING INSTRUCTIONS

Disassembly Of The Standard Tail Unit

- Firstly, remove the passenger seat from the motorcycle.
- Using a small flat head screwdriver, carefully un-plug the OEM lighting connectors attached to the tail unit. (**Picture 2**)
- Remove the number/licence plate.
- Using an allen key and 10mm socket, remove the four nuts/bolts marked in red (See **Picture 1**)
- Once removed disassemble the tail unit and remove the indicators for use with the R&G tail tidy. (**Picture 3**)

Please take note/mark which indicator was fitted to the left- and right-hand sides.

- Re-assemble without the original indicators and store away safely.

Preparing The Assembly

- Please follow the exploded assembly diagram above.
- Firstly, prepare the wiring on the licence plate light (**Item 3**)
- Push both indicators through the supplied heat shrink (one in-line behind the other) and apply heat with a heat gun/hair dryer or lighter until it can no longer be moved freely.
- Attach the number plate light unit (**Item 3**) to the main bracket (**Item 1**) as seen in **Picture 10**, then push the supplied shroud onto the unit.

Racing Technique Ltd T/A R&G

Unit 1, Shelley's Lane, East Worldham, Alton, Hampshire, GU34 3AQ

Tel: +44 (0)1420 89007 Fax: +44 (0)1420 87301 www.rg-racing.com Email: info@rg-racing.com

- Insert the rubber bung (**Item 11**) into the spacer plate (**Item 2**). (See **Picture 8**)

Fitting OEM indicators:

- Take the supplied OEM Indicator Adaptor plates (**Item 13/Picture 5**) and fit one to each indicator rubber, as shown in **Pictures 6**.
- Locate the indicators through the indicator mounting holes on the main bracket (**Part 1**) and re-fit the OEM plastic plate inside the rubber to securely mount the indicator, as shown in **Picture 7**.

Fitting The R&G Tail Tidy

- Please follow the exploded view on page 3.
- Push the number plate light & indicator wiring through the rubber bung, leaving enough slack for them to be routed along the back face of the plate bracket. (**Pictures 11 & 12**)
- Push the bolts (**Item 5**) through the washers (**Item 4**) then through both the bracket (**Item 1**) & cover plate (**Item 2**). (See **Picture 9**)
- Push the cables through the undertray of the motorcycle so they can be connected later.
- One by one pass the bolts through the holes in the motorcycles undertray.
- Once through, apply the washers & nyloc nuts (**Item 11 & 12**) to the end of each bolt and tighten until secure.
- Then connect the wiring connectors to the motorcycles wiring harness, at this point switch on the ignition and test the indicator & licence plate light function.
- Using the supplied cable ties (**Item 8**), tie the indicator and number plate light cables together and route them along the inside face of the plate bracket.
- Depending on local laws, a reflector may be required at the rear of the motorcycle. In this case, please apply the included reflector (**Item 10**) to the number plate (Do not obscure the characters).

ISSUE 1 - 16/12/2025 (TB)

CONSUMER NOTICE

The catalogue description and any exhibition of samples are only broad indications of the Products and R&G may make design changes which do not diminish their performance or visual appeal and supplying them in such state shall conform to the order. The Buyer acknowledges no representation or warranty (other than as to title) has been given or will apply to the Products other than those in R&G's order or confirmation and the Buyer confirms it has chosen the Products as being of merchantable quality and suitable for its particular purposes. Where R&G fits the Products or undertakes other services it shall exercise reasonable skill and care and rectify any fault free of charge unless the workmanship has been disturbed. The Buyer is responsible for ensuring that the warranty on the motorcycle is not affected by the fitting of the Products. On return of any defective Products R&G shall at its option either supply a replacement or refund the purchase money but shall not be liable if the Products have been modified or used or maintained otherwise than in accordance with R&G's or manufacturer's instructions and good engineering practice or if the defect arises from accident or neglect. Other than identified above and subject to R&G not limiting its liability for causing death and personal injury, it shall not be liable for indirect or consequential loss and otherwise its liability shall be limited to the amounts paid by the Buyer for the Products or the fitting or service concerned. These terms do not affect the Buyer's statutory rights.

R&G RETURNS POLICY (NON-FAULTY GOODS)

Returns must be pre-authorized (if not pre-authorized the return will be rejected). Goods may only be returned direct to us if they were purchased direct from us (customer must prove if necessary). Otherwise to be returned to original vendor. Goods must be in re-sellable condition, in the opinion of R&G. All returns are subject to a 25% restocking and handling fee (25% of the gross value exc. P&P – at the prevailing price at time of purchase). The customer must pay any and all carriage charges. No returns of discontinued products, unless within 14 days of purchase. This policy does not affect

Racing Technique Ltd T/A R&G

Unit 1, Shelley's Lane, East Worldham, Alton, Hampshire, GU34 3AQ

Tel: +44 (0)1420 89007 Fax: +44 (0)1420 87301 www.rg-racing.com Email: info@rg-racing.com