



FITTING INSTRUCTIONS FOR LP0412 LICENCE PLATE BRACKET



This kit contains the items pictured and labelled over page.

Some parts may be shown for clarity of instructions only.

Do not proceed until you are sure all parts are present.

Please read all instructions before proceeding.

**IF IN ANY DOUBT WHEN FITTING OUR PRODUCTS, CONSULT ONE OF OUR DEALERS
OR HAVE FITTED BY A QUALIFIED TECHNICIAN.**

Please note that the way the kit is packed does not necessarily represent the way of mounting to the bike.

In the event of rubber washers being used to hold components onto bolts, these rubber washers can be thrown away.



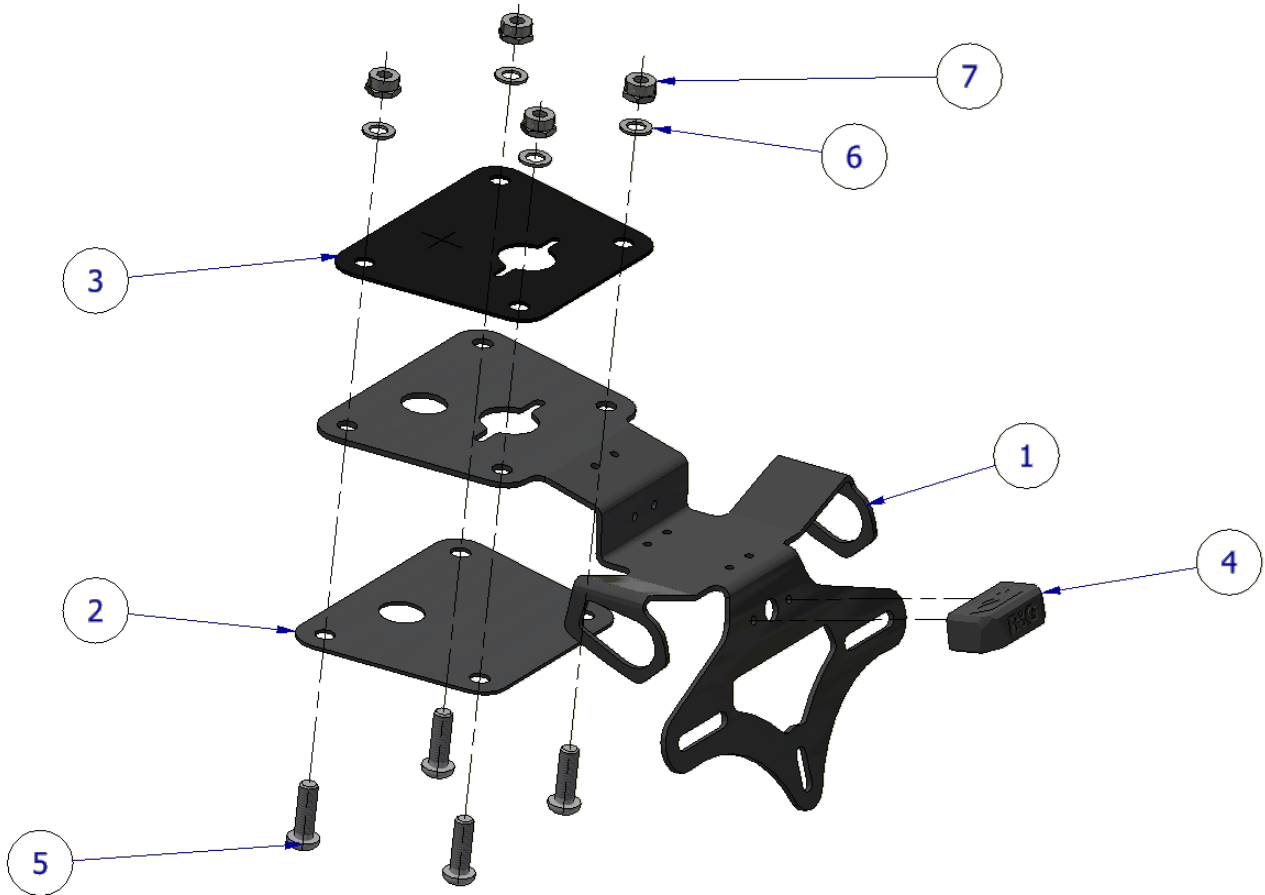
<u>TOOLS REQUIRED</u>	<u>GENERAL TORQUE SETTINGS</u>
<ul style="list-style-type: none"> • Set of metric Hex keys to include <ul style="list-style-type: none"> • 4mm, 5mm & 6mm. • Set of metric sockets and wrench. To include 12mm. <ul style="list-style-type: none"> • Cable cutters • Phillips screwdriver 	<p>M4 BOLT = 8Nm M5 BOLT = 12Nm M6 BOLT = 15Nm M8 BOLT = 20Nm M10 BOLT = 40Nm M12 BOLT = 40Nm</p>

LEGEND

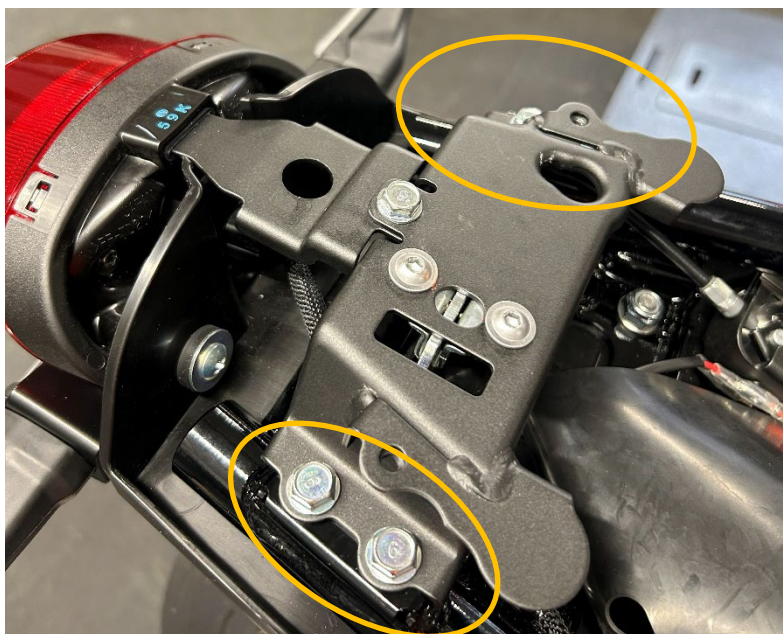
ITEM No.	DESCRIPTION	QTY
ITEM 1	TAIL TIDY BRACKET (TB0242)	1
ITEM 2	COVER PLATE (TB0412 PART 1)	1
ITEM 3	RUBBER GASKET (RG0034)	1
ITEM 4	LICENSE PLATE ILLUMINATOR INCLUDING BOLTS & SPACERS (LA0012)	1
ITEM 5	M8 x 25mm BOLT	4
ITEM 6	M8 WASHER	4
ITEM 7	M8 NUT	4
ITEM 8	200mm LENGTH OF HEAT SHRINK	1
ITEM 9	LICENSE PLATE ILLUMINATOR CONNECTOR (CON0051)	1
ITEM 10	75mm CABLE TIE	4
ITEM 11	REFLECTOR (REFL3)	1



Assembly Diagram



FITTING PICTURE





FITTING GUIDE

Disassembly Instructions:

- Remove the seat.
- Remove the 4x black bolts holding on the rear cowling, this can now be lifted off the tail off the subframe. You can now disconnect the three connectors underneath the rubber flap.
- Now remove the 4 bolts circled in the **fitting picture**. This will allow you to reposition the bracket also shown in the fitting picture to allow access to the bolts securing the OEM tail unit to the subframe.
- Remove the indicators from the OEM tail unit.

Assembly Instructions:

- Using the supplied 200mm heat shrink (**Item 13**), cover the LA0012 wires then fit the license plate light (**Item 4**) to the main bracket (**Item 1**) and attach the license plate illuminator connector (**Item 5**) to the illuminator wires. **Please use the supplied spacers & bolts to ensure the light clears any plate frame installed and fully illuminates the number plate.**
- Using the 200mm heat shrink (**Item 12**) cover the wires and thread them through the hole in the main bracket.
- Fit the OEM indicators to the tail tidy bracket in the same way they were removed from the OEM tail unit.
- Use the supplied cable ties to secure the wires to the underside of the bracket.
- Ensure the wires pass through the cover plate, tail tidy bracket and rubber gasket before offering the assembly to the underside of the bike.

Fitting Instructions:

- Offer the new license plate bracket into position while feeding the wiring through the hole in the under-tray.
- Fit the four button head bolts (**Item 5**) through the four holes in the new license plate bracket, cover plate and gasket assembly.
- Secure using the four nuts with washers (**Items 6 and 7**) please ensure the wires are not crushed.
- Reconnect the indicators to the indicator wiring plug sockets as original.
- Connect the license plate illuminator (**Item 4**) to the license plate illuminator wiring plug sockets as original using the supplied connector (**Item 9**) (please check for illumination at this stage, if illumination fails please swap the bullet connectors over and recheck for correct operation).
- Refit and secure the cross brace/seat catch and then the seat cowl.
- Refit the seat as original and license plate (it may require drilling).
- Depending on local laws, attach enclosed reflector in an appropriate location.
- Test the license plate illuminator and all lights before riding.

IMPORTANT: FOR SAFETY, ENSURE THE LICENCE PLATE IS PLACED AS HIGH AS POSSIBLE ON THE TAIL TIDY (IT MAY REQUIRE DRILLING). IF FITTING A LICENCE PLATE OF 200MM OR LONGER (INCLUDING ANY SHROUD OR REFLECTOR ATTACHMENT) TO THE BRACKET, BEFORE RIDING, FULLY COMPRESS THE SUSPENSION TO ENSURE NO PART OF THE ASSEMBLY CAN CONTACT THE TYRE WHILE THE VEHICLE IS IN MOTION OR UNDER LOAD. IT IS YOUR



RESPONSIBILITY TO CHECK FOR THIS POSSIBILITY AND TAKE AVOIDING ACTION. FAILURE TO CHECK THIS COULD RESULT IN SERIOUS INJURY OR DAMAGE TO THE MOTORCYCLE.

ISSUE 1 – 12/03/2026 (MH)

CONSUMER NOTICE

The catalogue description and any exhibition of samples are only broad indications of the Products and R&G may make design changes which do not diminish their performance or visual appeal and supplying them in such state shall conform to the order. The Buyer acknowledges no representation or warranty (other than as to title) has been given or will apply to the Products other than those in R&G's order or confirmation and the Buyer confirms it has chosen the Products as being of merchantable quality and suitable for its particular purposes. Where R&G fits the Products or undertakes other services it shall exercise reasonable skill and care and rectify any fault free of charge unless the workmanship has been disturbed. The Buyer is responsible for ensuring that the warranty on the motorcycle is not affected by the fitting of the Products. On return of any defective Products R&G shall at its option either supply a replacement or refund the purchase money but shall not be liable if the Products have been modified or used or maintained otherwise than in accordance with R&G's or manufacturer's instructions and good engineering practice or if the defect arises from accident or neglect. Other than identified above and subject to R&G not limiting its liability for causing death and personal injury, it shall not be liable for indirect or consequential loss and otherwise its liability shall be limited to the amounts paid by the Buyer for the Products or the fitting or service concerned. These terms do not affect the Buyer's statutory rights.

R&G RACING RETURNS POLICY (NON-FAULTY GOODS)

Returns must be pre-authorized (if not pre-authorized the return will be rejected). Goods may only be returned direct to us if they were purchased direct from us (customer must prove if necessary). Otherwise to be returned to original vendor. Goods must be in re-sellable condition, in the opinion of R&G Racing. All returns are subject to a 25% restocking and handling fee (25% of the gross value exc. P&P – at the prevailing price at time of purchase). The customer must pay any and all carriage charges. No returns of discontinued products, unless within 14 days of purchase. This policy does not affect your statutory rights and does not refer to faulty goods.